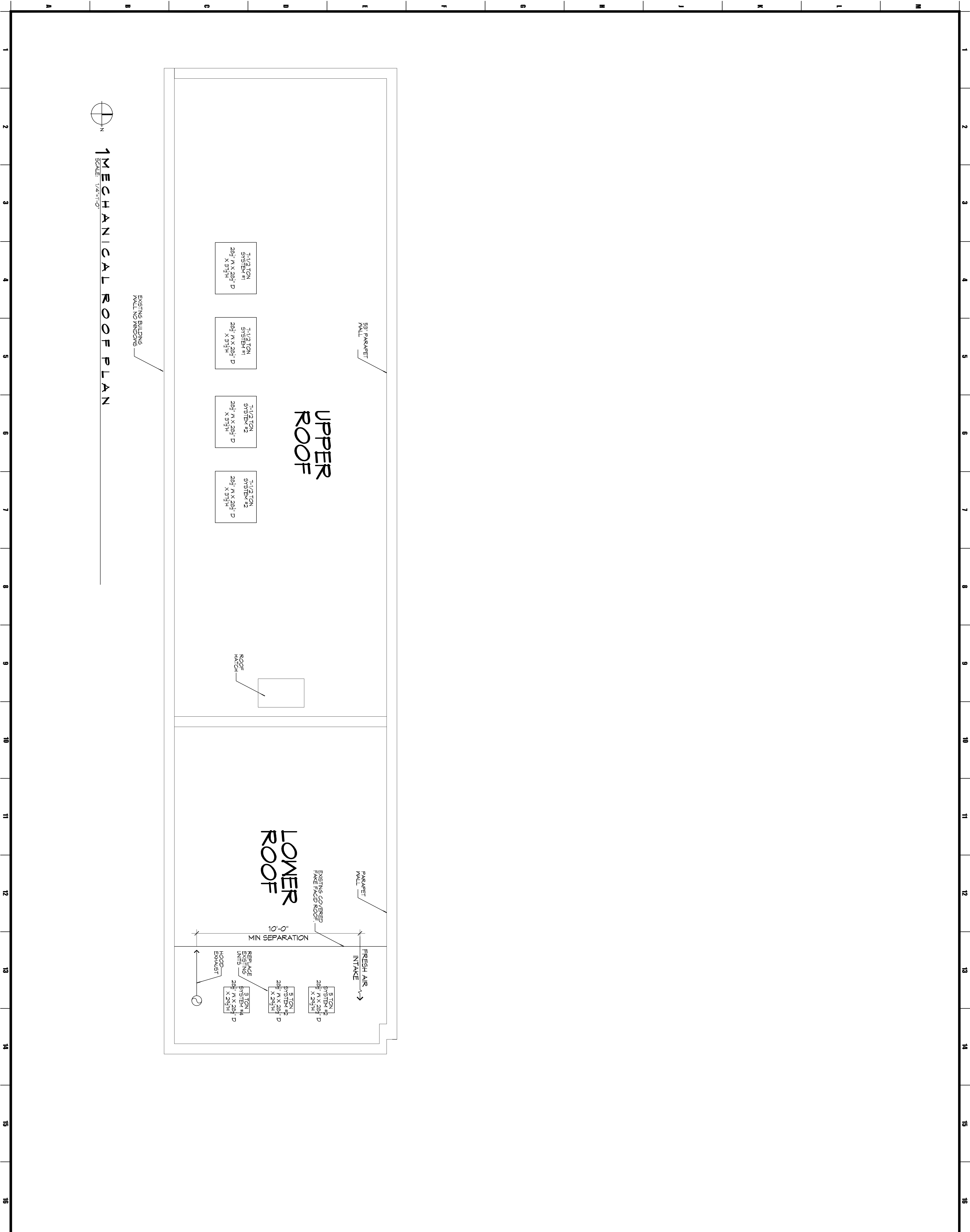


COPYRIGHT  
 THESE DOCUMENTS ARE PROTECTED BY UNITED STATES COPYRIGHT LAW. THEY HAVE BEEN PREPARED SPECIFICALLY FOR THE PROJECT IDENTIFIED AND ARE NOT SUITABLE FOR USE ON ANY OTHER PROJECT OR AT ANY OTHER LOCATION WITHOUT THE EXPRESS WRITTEN APPROVAL AND PARTICIPATION OF MURRAY ARCHITECTS. REPRODUCTION OF THESE DOCUMENTS MUST BE AUTHORIZED BY THE ARCHITECT. ALL RIGHTS ARE RESERVED TO MURRAY ARCHITECTS.



**MURRAY ARCHITECTS**  
 131 ormond center court  
 destrehan, la 70047  
 (985) 764-7275  
 fax (985) 725-0182

**DAMMON ENGINEERING, INC.**  
 LOUISIANA & MISSISSIPPI  
 www.dammonengineering.com  
 info@dammonengineering.com  
 554 Old Spanish  
 Trail  
 Slidell, LA 70458  
 TN: 382.687.3822, F: 382.641.3780

Chief Engineer:  
 Brian Mastich, PE

NO.	REVISION	DATE
1		
2		
3		
4		
5		
6		

301 ROYAL ST.

**MURRAY ARCHITECTS**  
 PROJECT NUMBER: 1334  
 DATE: 7.1.2013  
 DRAWING NUMBER: M102  
 CD

STATE OF LOUISIANA  
 PROFESSIONAL ENGINEER  
 NO. 06116  
 EXPIRES 06/16