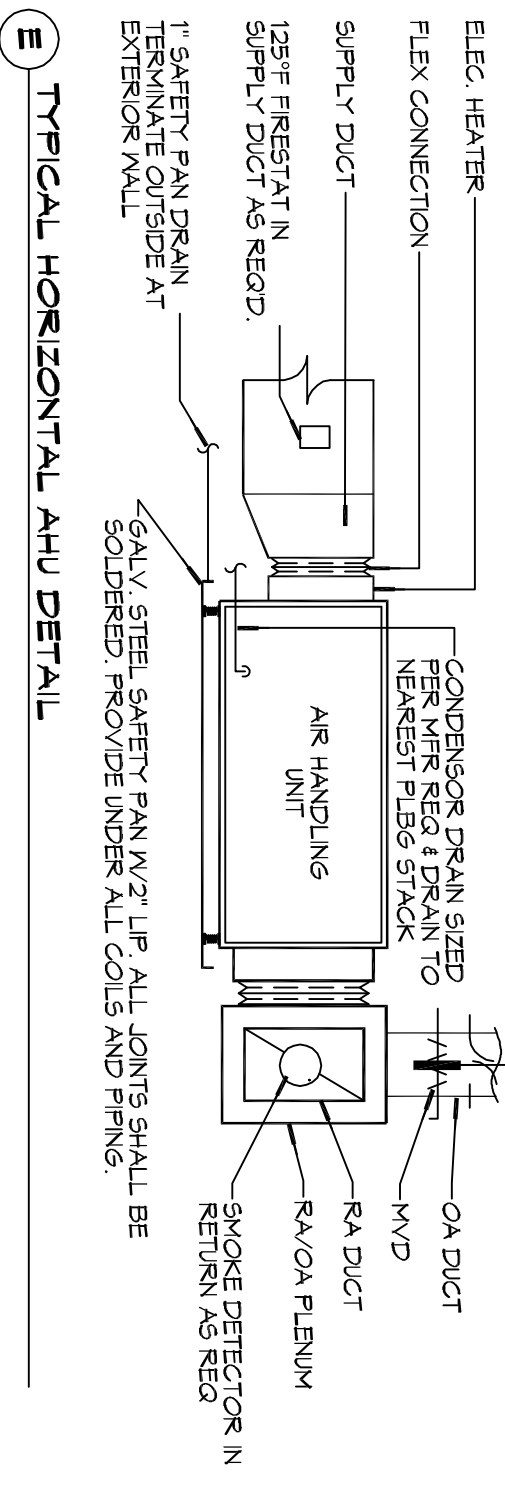
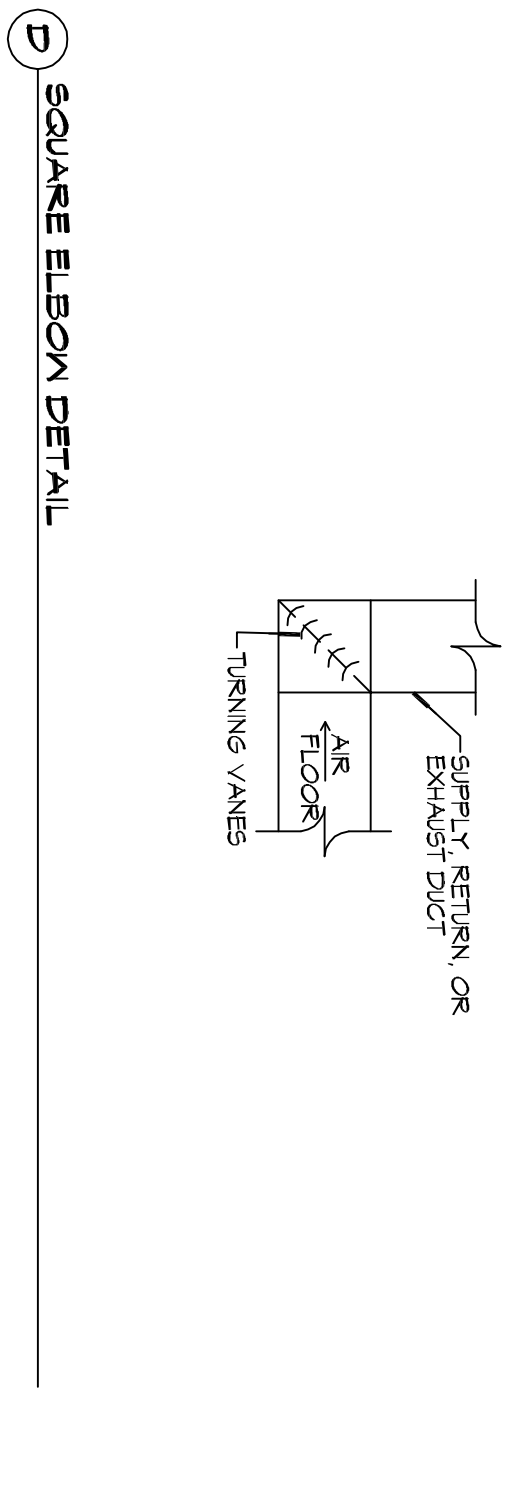


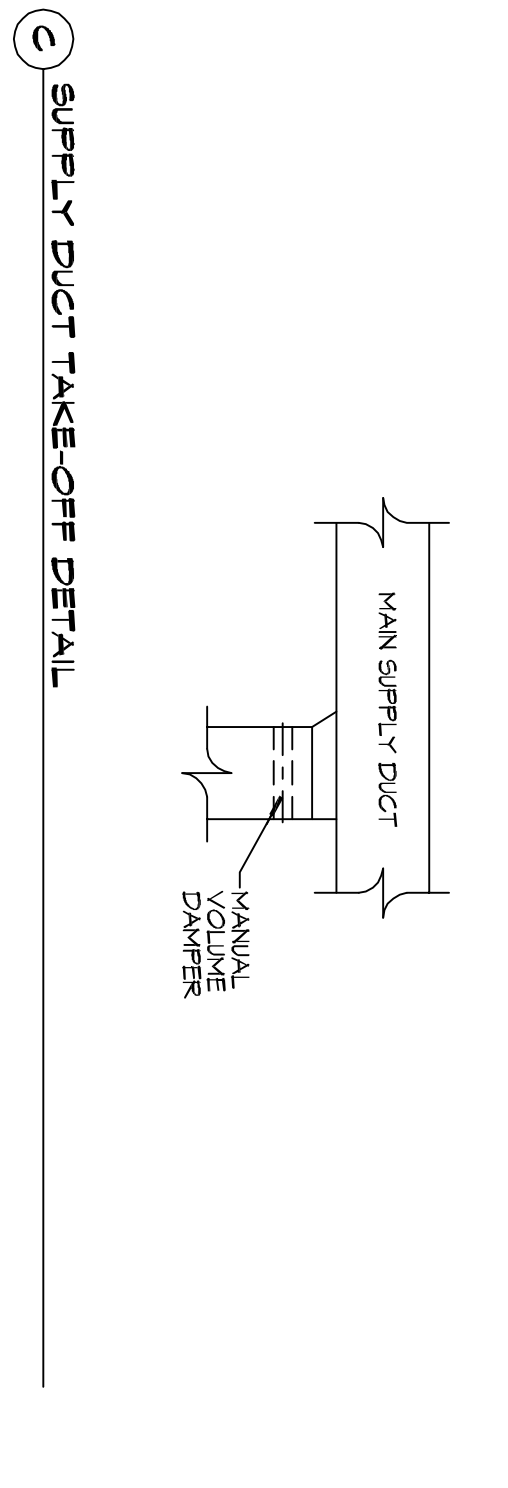
**F DIFFUSER CONNECTION DETAIL - FLEX DUCT**



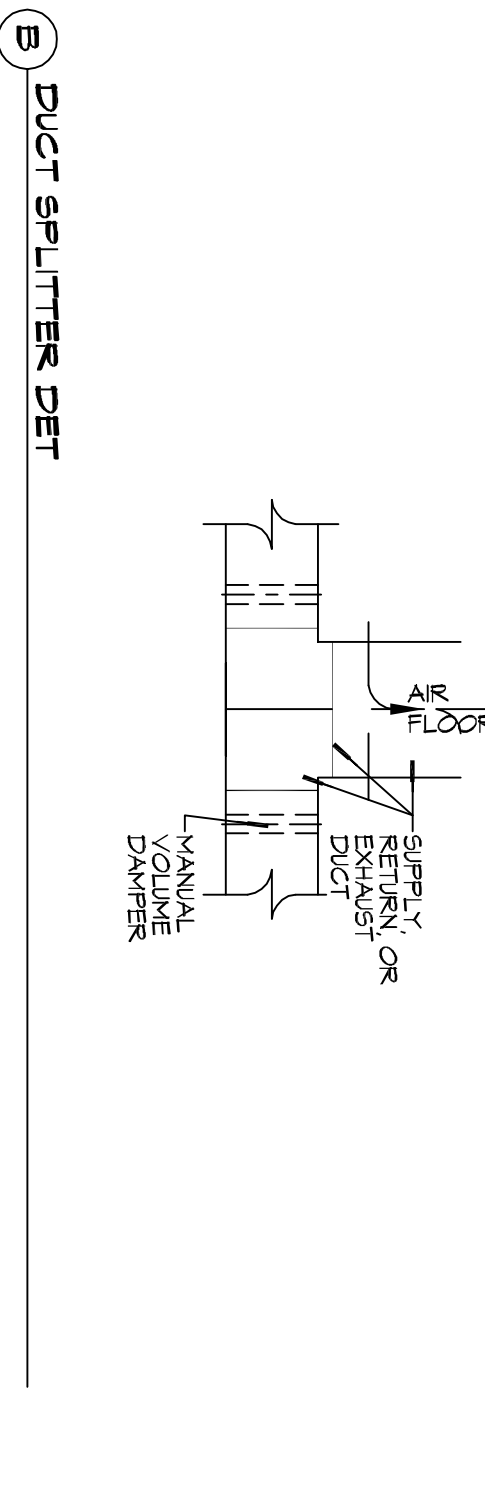
**E TYPICAL HORIZONTAL AHU DETAIL**



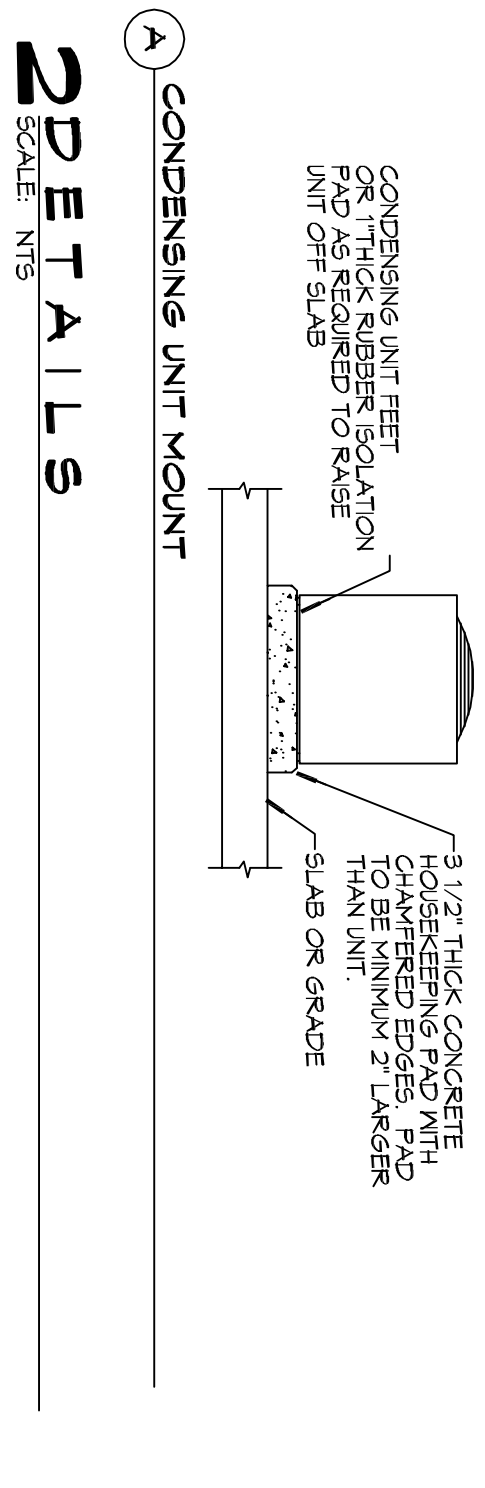
**D SQUARE ELBOW DETAIL**



**C SUPPLY DUCT TAKE-OFF DETAIL**



**B DUCT SPLITTER DET.**



**A CONDENSING UNIT MOUNT**

**DETAILS**  
SCALE: NTS

A/C UNIT SCHEDULE		ELECTRICAL		COMMENTS	
TOTAL BTU	VOLTAGE	WIRE	CONNECTION	NOTES	TO BE SPLIT
40,000 BTU (1.5 TON)	240V 3Ø	-	F1, F2	-	SYSTEM (NAME OR EQUAL)

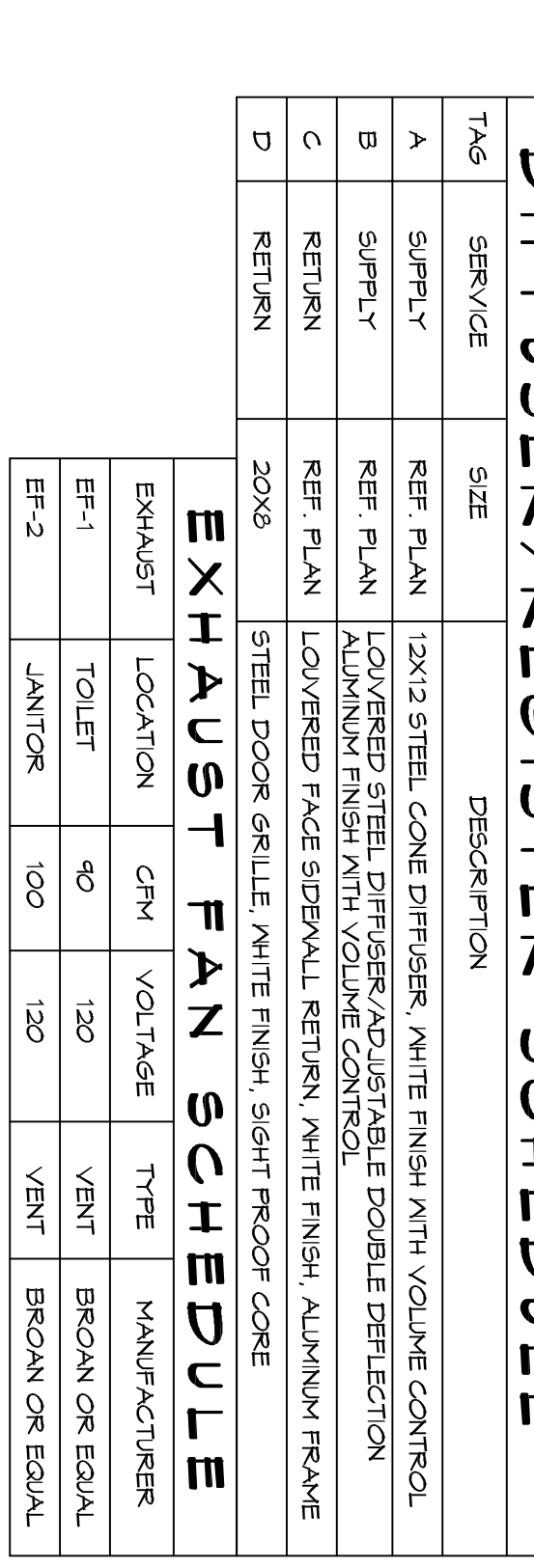
AHU UNIT SCHEDULE		ELECTRICAL		COMMENTS	
TOTAL BTU	CPM	O.A.	HEAT RECOVERY	NOTES	ALL A/C TO BE SPLIT - SYSTEM (NAME OR EQUAL) ALL AHU TO BE SINGLE FAN CONNECTION
40,000 BTU (1.5 TON)	3,160	500	12	240V 3Ø	-

DIFFUSER/REGISTER SCHEDULE		DESCRIPTION	
TAG	SERVICE	SIZE	DESCRIPTION
A	SUPPLY	12x12	STEEL CONE DIFFUSER, WHITE FINISH WITH VOLUME CONTROL
B	SUPPLY		LOWERED STEEL DIFFUSER/ADJUSTABLE DOUBLE DEFLECTION ALUMINUM FINISH WITH VOLUME CONTROL
C	RETURN		LOWERED FACE SPERALL RETURN, WHITE FINISH ALUMINUM FRAME
D	RETURN	20x6	STEEL DOOR GRILLE, WHITE FINISH, SIGHT SCOOPE CORE

EXHAUST FAN SCHEDULE		DESCRIPTION	
EXHAUST	LOCATION	CPM	VOLTAGE
EF-1	TOILET	90	120
EF-2	JANITOR	100	120

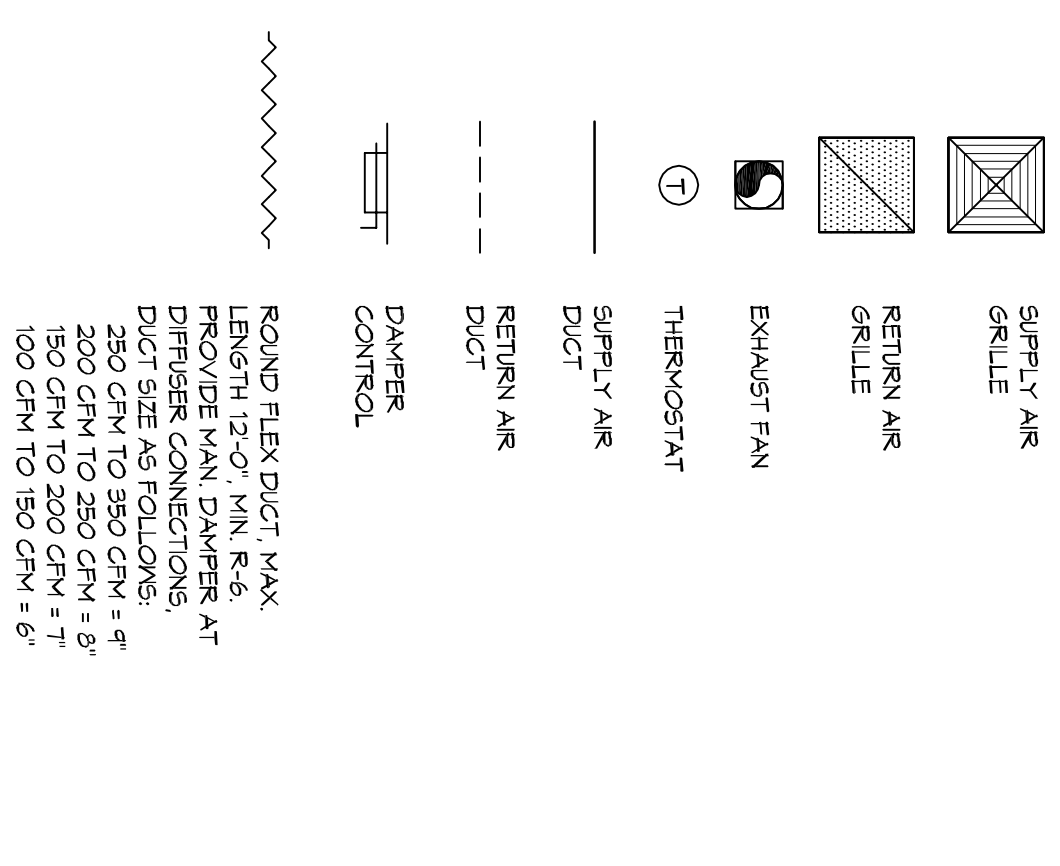


**MECHANICAL FLOOR PLAN**  
SCALE: 1/4\"/>

**GENERAL HVAC NOTES**

- COVERED DUCTWORK TO BE GALVANIZED SHEET METAL LINED WITH STAINLESS STEEL DUCT LINER, MIN R-6. INSTALLED PER SMACNA STANDARDS.
- EXPOSED DUCTWORK TO BE GALVANIZED SHEET METAL LINED WITH FIBROGLASS GLASS DUCT LINER, MIN R-6. INSTALLED PER SMACNA STANDARDS.
- ROUND FLEXIBLE DUCT TO BE UL-181, CLASS 1, AIR DUCT MATERIALS.
- DUCT SIZES SHOWN ARE CLEAR INSIDE DIMENSIONS.
- ALL SYSTEMS OVER 250 CFM ARE TO BE INSTALLED PER 15,000 CFM SMOKE DETECTOR SHALL BE INSTALLED IN ACCORDANCE WITH NFPA 72 IN THE RETURN DUCT DOWNSTREAM OF THE AIR HANDLING UNIT AND ALL FILTERS TO AUTOMATICALLY STOP THE FAN.
- PROVIDE UL LISTED 125 F° FRESH AIR RETURN AIR OF EACH SYSTEM UNDER 2000 CFM TO SHUT DOWN THE FAN IN THE EVENT OF FIRE.
- PROVIDE UL RATED FIRE DAMPERS WHERE REQUIRED AT ALL DUCT PENETRATIONS OF FIRE RATED ASSEMBLIES AND WHERE REQUIRED BY CODE, INCLUDING OUTSIDE AIR INTAKES AND EXHAUST FANS.
- CONDENSATE DRAINS TO BE PVC PIPE RUN TO PLUMBERS F-TAPE WITHIN FIVE FEET OF AIR HANDLING UNITS.
- ALL AIR HANDLING SYSTEMS TO BE BALANCED TO ACHIEVE PROPER AIR FLOWS PER PLANS.
- ALL THERMOSTATS TO BE AUTOMATIC CHANGED OVER WITH HEAT SWITCH.
- EXHAUST FAN SHALL BE CONTROLLED BY A SWITCH ON THE WALL IN THE SAME LOCATION AS LIGHT SWITCH(S). PROVIDE BACK DRAFT DAMPER.
- PROVIDE AND INSTALL WATER PROOF GRILLE VENT IN PROPER ROOF LOCATION FOR PLUMBING FIXTURE EXHAUST.
- ALL SUPPLY AIR VENTS SHALL BE EQUIPPED WITH AIR CONTROL DAMPERS AT THE REGISTER.
- LOCATE OUTDOOR UNITS AS SHOWN ON ARCHITECTURAL DRAWINGS.
- REFRIGERANT LINES SHALL BE SIZED BY UNIT MANUFACTURER AND INSTALLED ACCORDING TO MANUFACTURER'S INSTRUCTIONS.
- FRESH AIR SHALL BE SUPPLIED TO EACH AIR HANDLER THROUGH EXTERIOR WALL DUCT SUPPLIED WITH A CONTROL DAMPER.
- ALL ELECTRICAL, MECHANICAL, AND PLUMBING PENETRATING FIRE WALLS SHALL BE FIRE CALLED, AND PENETRATING THROUGH RATED CONSTRUCTION SHALL BE SEALED WITH A MANUAL CAPABLE OF WITHSTANDING FIRE FOR A MINIMUM OF 2 HOURS AND NOT GREATER WHEN TESTED IN ACCORDANCE WITH ASTM E-141.
- ALL MECHANICAL SYSTEMS ARE DRAIN DRAINAGE MANUFACTURER'S CONTRACTOR TO VERIFY WITH OWNER LOCATIONS OF VENTS, DAMPERS, REGISTERS, ETC.
- FLEXIBLE DUCTWORK LENGTH NOT TO EXCEED 15'-0\"/>
- REFER TO REFLECTED CEILING PLAN FOR FINAL GRILLE AND DIFFUSER LOCATIONS AND CONDENSATE AS REQUIRED.
- FINAL LOCATION OF TEMPERATURE CONTROLS TO BE COORDINATED WITH OWNER AT JOB SITE.
- PROVIDE AND INSTALL SMOKE DETECTORS AS APPROVED BY LOCAL AHJ'S. PLACE NEAR E/A AND S/A OPENINGS OF AHU AND PROVIDE LOCAL ACCESS PANEL, WIRING BY ELECTRICAL CONTRACTOR.
- FRESH AIR INTAKES ARE REQUIRED TO HAVE HORIZONTAL OR GRAVITY DAMPERS TO SHUT OFF WHEN SYSTEM IS NOT RUNNING.
- PROVIDE BRD SCREENS AT ALL EXTERIOR MECHANICAL PENETRATIONS.
- COORDINATE WALL MOUNTED THERMOSTAT LOCATIONS WITH ALL OWNER FINISHED ITEMS EITHER WALL MOUNTED OR FLOOR MOUNTED AGAINST PARTITIONS. REFER TO ARCHITECTURAL DRAWINGS.
- SEE ROOF PLAN FOR ALL ROOF PENETRATIONS.
- PROVIDE MIN 18 GA GALVANIZED SHEET METAL TO BLANK-OFF GALE VENTS WHERE INTAKE/EXHAUST DUCTS OCCUR.

**LEGEND**



**DAMMON ENGINEERING, INC.**  
LOUISIANA & MISSISSIPPI

Chief Engineer: Brian Mistich, PE  
554 Old Spanish Trail  
Slidell, LA 70458

www.dammonengineering.com  
info@dammonengineering.com  
PH: 985.649.5832

REVISIONS	
#	DESCRIPTION

**NEW PREP FACILITY**

221 COUSIN STREET  
SLIDELL, LA 70458

JOB No: 2324 DATE: 11-21-17  
DRAWN BY: CKD CHECKED BY: CKD

**M101**

MECHANICAL FLOOR PLAN, SCHEDULES AND DETAILS

DRAWING NUMBER:

SHEET No. 7 of 8