

#	DESCRIPTION	DATE

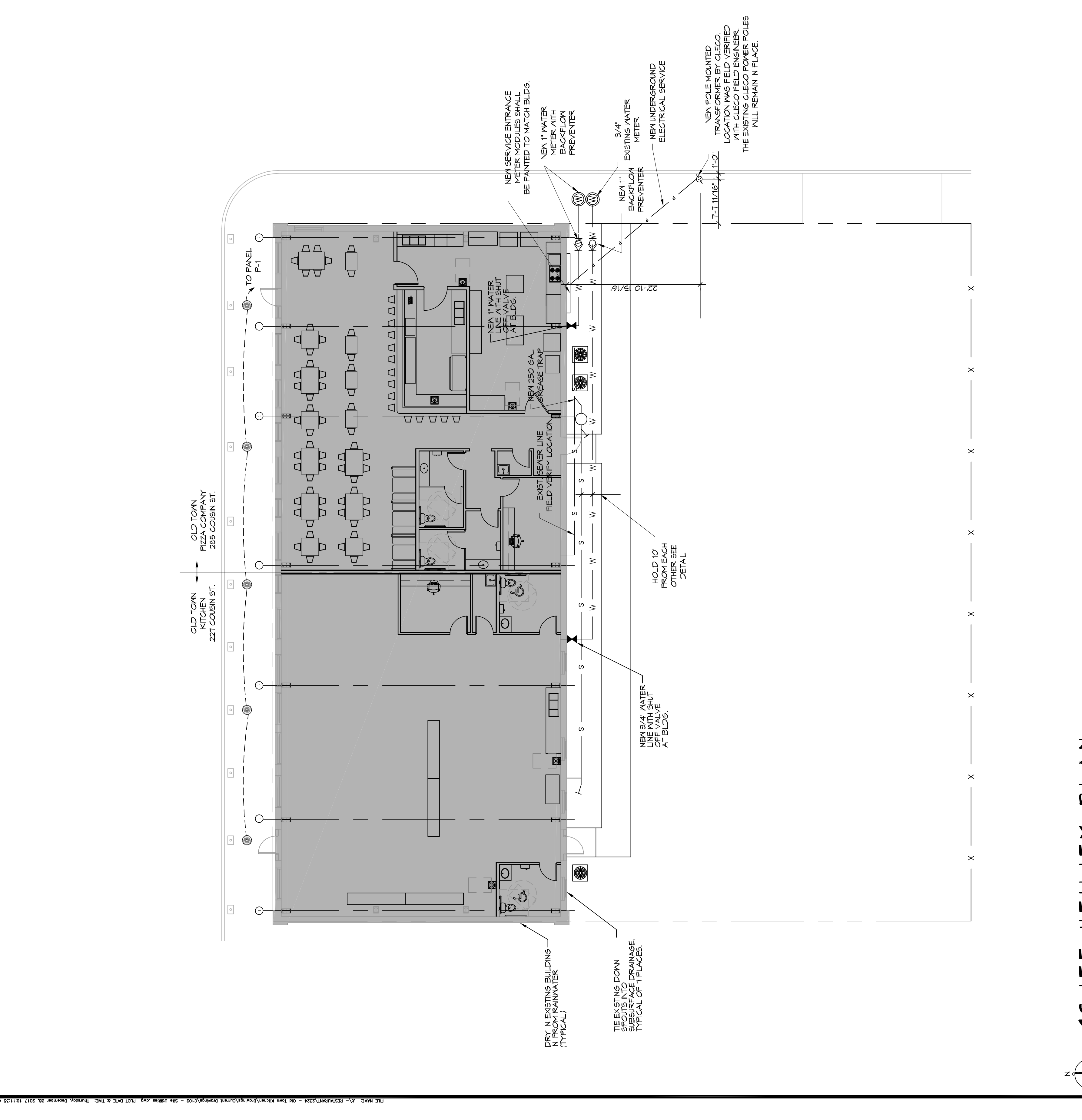
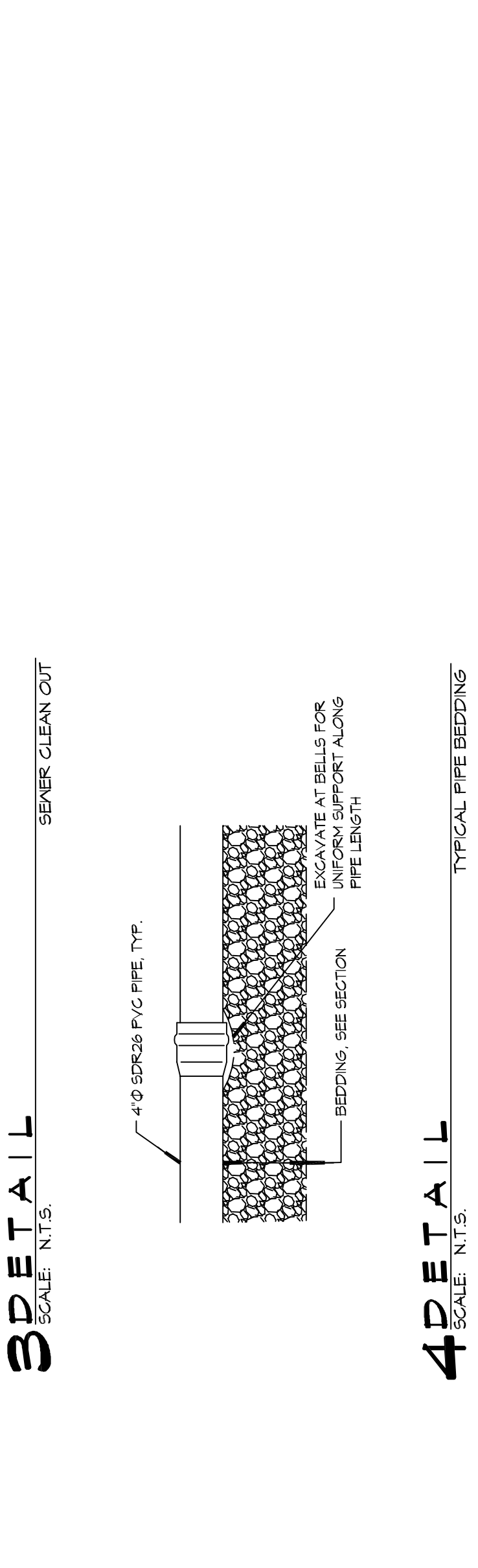
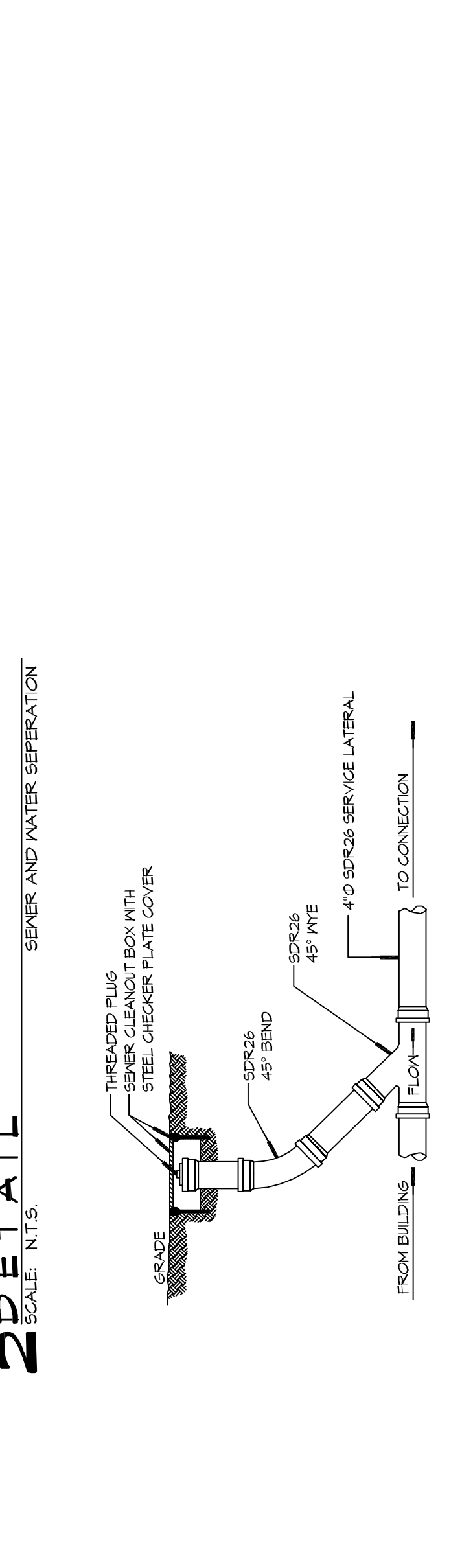
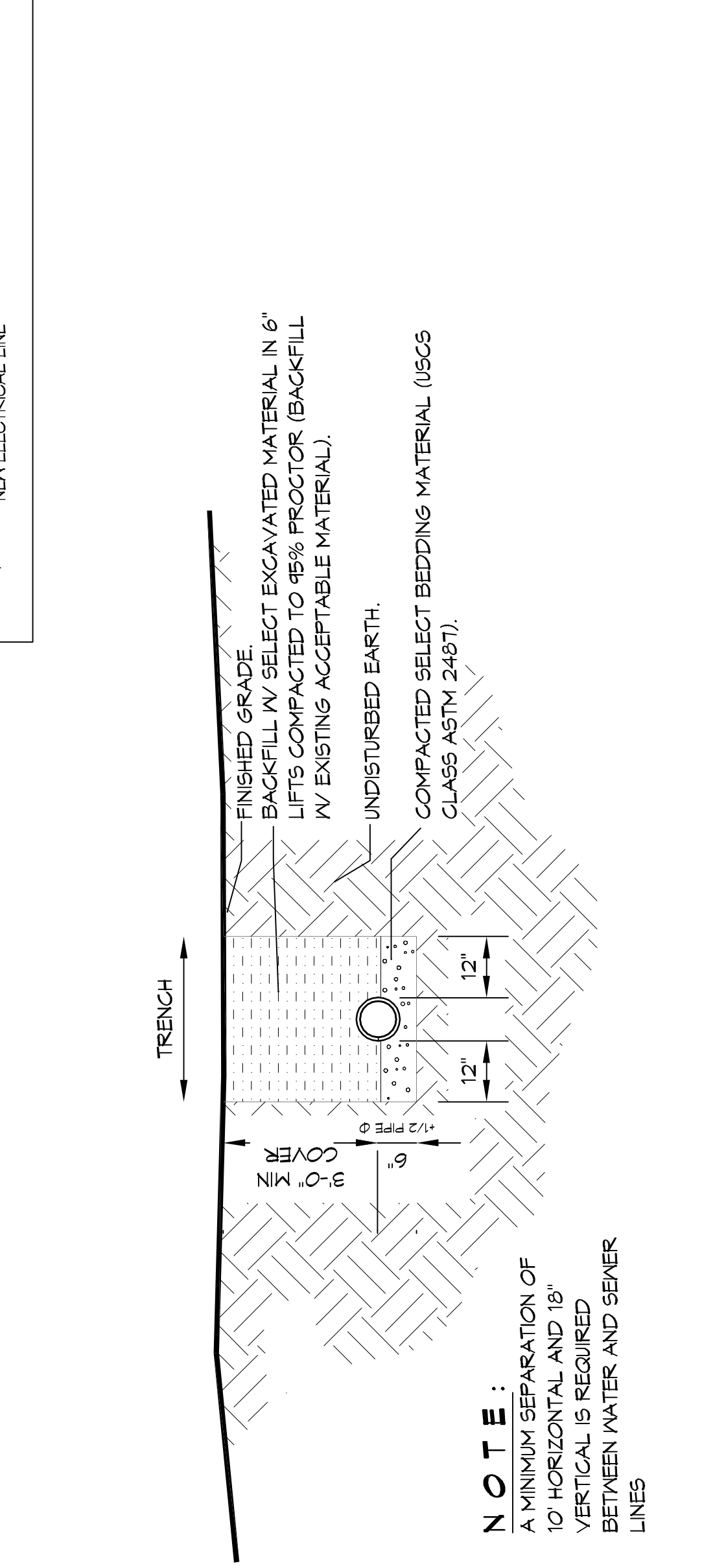


GENERAL NOTES

- PROVIDE ALL LABOR, MATERIAL AND EQUIPMENT FOR A COMPLETE OPERATING SYSTEM. CONTRACTOR IS TO FIELD VERIFY ALL EXISTING UTILITY LOCATIONS, ELEVATIONS, AND INVERTS PRIOR TO COMMENCING ANY WORK. CONTRACTOR SHALL PAY NECESSARY FEES FOR THE UTILITIES CONNECTIONS.
- CONTRACTOR TO BE RESPONSIBLE TO VERIFY ANY INVERTS AND SET NEW INVERTS OF SEWAGE AND DRAINAGE PIPES.
- ALL WORK AND MATERIAL TO COMPLY STRICTLY TO THE LATEST LOCAL CITY PARISH, STATE, AND NATIONAL GOVERNING CODES.
- SEWAGE LINES 8" AND SMALLER SHALL BE SLOPED 1/4" PER FOOT, AND LINES THAT ARE 4" AND LARGER SHALL BE SLOPED 1/8" PER FOOT.
- CONTRACTOR SHALL CONTACT LOUISIANA ONE CALL PRIOR TO COMMENCEMENT OF SITE EXCAVATION.

SITE UTILITIES LEG

W — NEW WATER LINE
 S — NEW SEWER LINE
 E — NEW ELECTRICAL LINE



1 SITE UTILITY PLAN
SCALE: 1/4"=1'-0"

DRY IN EXISTING BUILDING SPOTS INTO DRAINAGE TYPICAL OF PLACES.
 TIE EXISTING DOWN SPOTS INTO DRAINAGE TYPICAL OF PLACES.
 HOLD 10' FROM EACH OTHER SEE DETAIL.
 NEW 3/4" WATER LINE WITH SHUT OFF VALVE AT BLDG.
 NEW 1" WATER LINE WITH SHUT OFF VALVE AT BLDG.
 NEW 3/4" ELECTRICAL SERVICE.
 NEW 1" EXISTING WATER METER.
 NEW 1" WATER METER WITH BACKFLOW PREVENTER.
 NEW SERVICE ENTRANCE METER MODULES SHALL BE PAINTED TO MATCH BLDG.
 NEW POLE MOUNTED TRANSFORMER LOCATION WAS FIELD VERIFIED WITH CLEGO FIELD ENGINEER. THE EXISTING CLEGO POWER POLES WILL REMAIN IN PLACE.
 NEW 250 GAL GREASE TRAP.
 EXIST SEWER LINE FIELD VERIFY LOCATION.
 NEW 1" WATER LINE WITH SHUT OFF VALVE AT BLDG.
 NEW 3/4" WATER METER WITH BACKFLOW PREVENTER.
 NEW 3/4" ELECTRICAL SERVICE.
 NEW POLE MOUNTED TRANSFORMER LOCATION WAS FIELD VERIFIED WITH CLEGO FIELD ENGINEER. THE EXISTING CLEGO POWER POLES WILL REMAIN IN PLACE.