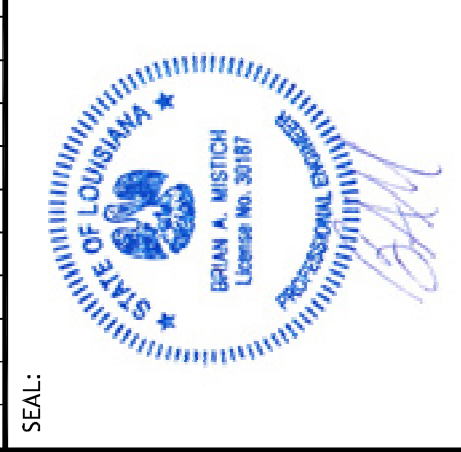


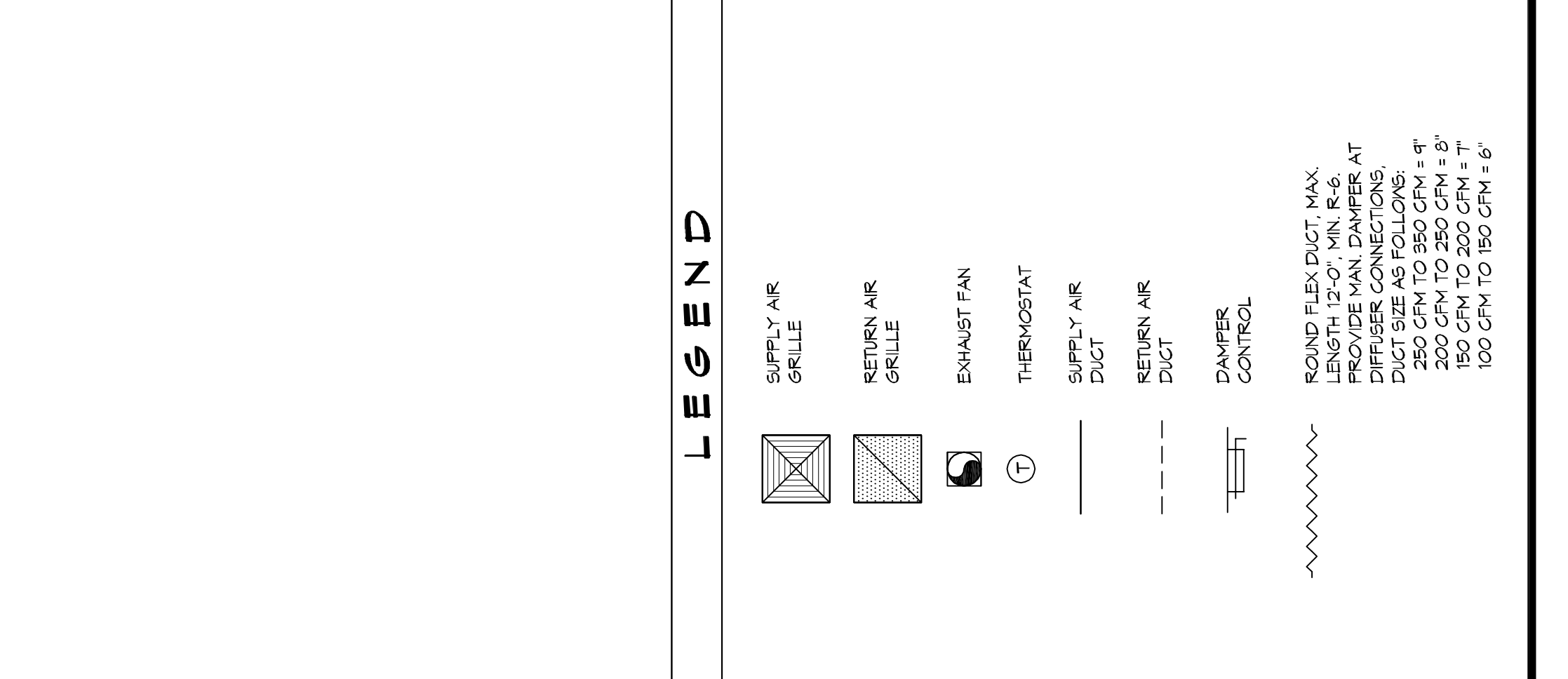
#	DESCRIPTION	DATE



JOB No.:	2224
DATE:	11-21-17
DRAWN BY:	
CHECKED BY:	
227 COLON STREET EL DUELL, LA 70438	

GENERAL HVAC NOTES

1. CONCEALED DUCTWORK TO BE GALVANIZED SHEET METAL LINED WITH FIBROUS GLASS DUCT LINER, MIN R-6. INSTALLED PER SMACNA STANDARDS.
2. EXPOSED DUCTWORK TO BE GALVANIZED SHEET METAL LINED WITH FIBROUS GLASS DUCT LINER, MIN R-6. INSTALLED PER SMACNA STANDARDS.
3. ROUND FLEXIBLE DUCT TO BE UL-181, CLASS 1, AIR DUCT MATERIALS. DUCT SIZES SHOWN ARE CLEAR INSIDE DIMENSIONS.
4. IN ALL SYSTEMS OVER 2000 CFM AND LESS THAN 18,000 CFM, SMOKE DETECTORS SHALL BE INSTALLED IN ACCORDANCE WITH NFPA 72E IN THE RETURN DUCT DOWNSTREAM OF THE AIR HANDLING UNIT AND ALL FILTERS TO AUTOMATICALLY STOP THE FAN.
5. PROVIDE UL LISTED 125°F FIRESTAT IN RETURN AIR OF EACH SYSTEM UNDER 2000 CFM TO SHUT DOWN THE FAN IN THE EVENT OF FIRE.
6. PROVIDE UL RATED FIRE DAMPERS WHERE REQUIRED AT ALL DUCT PENETRATIONS OF FIRE-RATED ASSEMBLIES AND WHERE REQUIRED BY CODE, INCLUDING OUTSIDE AIR INTAKES AND EXHAUST FANS.
7. CONDENSATE DRAINS TO BE P-V-C PIPE RUN TO PLUMBERS P-TRAP WITHIN FIVE FEET OF AIR HANDLING UNITS.
8. ALL AIR HANDLING SYSTEMS TO BE BALANCED TO ASSURE PROPER AIR FLOWS PER PLANS.
9. ALL THERMOSTATS TO BE AUTOMATIC CHANGEOVER WITH HEAT SWITCH. EXHAUST FAN SHALL BE CONTROLLED BY A SWITCH ON THE WALL IN THE SAME LOCATION AS LIGHT SWITCH(S). PROVIDE BACK DRAFT DAMPER.
10. PROVIDE AND INSTALL WATER PROOF GRILLE VENT IN PROPER ROOF LOCATION FOR PLUMBING FEATURE EXHAUST.
11. ALL SUPPLY AIR VENTS SHALL BE EQUIPPED WITH AIR CONTROL DAMPERS AT THE REGISTER.
12. LOCATE OUTDOOR UNITS AS SHOWN ON ARCHITECTURAL DRAWINGS. REFRIGERANT LINES SHALL BE SIZED BY UNIT MANUFACTURER AND INSTALLED ACCORDING TO MANUFACTURER'S INSTRUCTIONS.
13. FRESH AIR SHALL BE SUPPLIED TO EACH AIR HANDLER THROUGH EXTERIOR WALL DUCT SUPPLIED WITH A CONTROL DAMPER.
14. ALL ELECTRICAL, MECHANICAL, AND PLUMBING PENETRATING FIRE WALLS SHALL BE FIRE CALKED. (PENETRATIONS THROUGH RATED CONSTRUCTION SHALL BE SEALED WITH A MATERIAL CAPABLE OF PREVENTING THE PASSAGE OF FLAMES AND HOT GASES WHEN TESTED IN ACCORDANCE WITH ASTM E814).
15. ALL MECHANICAL SYMBOLS AND DRAIN DIAGRAMS SHALL BE ACCORDING TO THE REGISTER WITH OTHER LOCATIONS OF VENTS, DAMPERS, REGISTERS, ETC.
16. FLEXIBLE DUCTWORK LENGTH NOT TO EXCEED 12'-0". REFER TO SELECTED GELING PLAN FOR FINAL GRILLE AND DIFFUSER LOCATIONS AND COORDINATE AS REQUIRED.
17. FINAL LOCATION OF TEMPERATURE CONTROLS TO BE COORDINATED WITH OWNER AT JOB SITE.
18. PROVIDE AND INSTALL SMOKE DETECTORS AS APPROVED BY LOCAL A.H.J.S. PLACE NEAR R/A AND S/A OPENINGS OF AHU AND PROVIDE WITH ACCESS PANEL WIRING BY ELECTRICAL CONTRACTOR.
19. FRESH AIR INTAKES ARE REQUIRED TO HAVE MOTORIZED OR GRAVITY DAMPERS TO SHUT OFF WHEN SYSTEM IS NOT RUNNING.
20. COORDINATE WALL MOUNTED THERMOSTAT LOCATIONS WITH ALL OTHER FINISHED ITEMS EITHER WALL MOUNTED OR FLOOR MOUNTED AGAINST PARTITIONS. REFER TO ARCHITECTURAL DRAWINGS.
21. SEE ROOF PLAN FOR ALL ROOF PENETRATIONS.
22. PROVIDE MIN 18 GA GALVANIZED SHEET METAL TO BLANK-OFF GABLE VENTS WHERE INTAKE/EXHAUST DUCTS OCCUR.



A/C UNIT SCHEDULE

TOTAL BTU	ELECTRICAL	COMMENTS
90,000 BTU (15 TON)	VOLTAGE/MCA	NOTE: ALL A/C TO BE SPLIT-SYSTEM HVAC (FRAME OR EQUAL)
AHU #1	240V/30	P1-...

AHU UNIT SCHEDULE

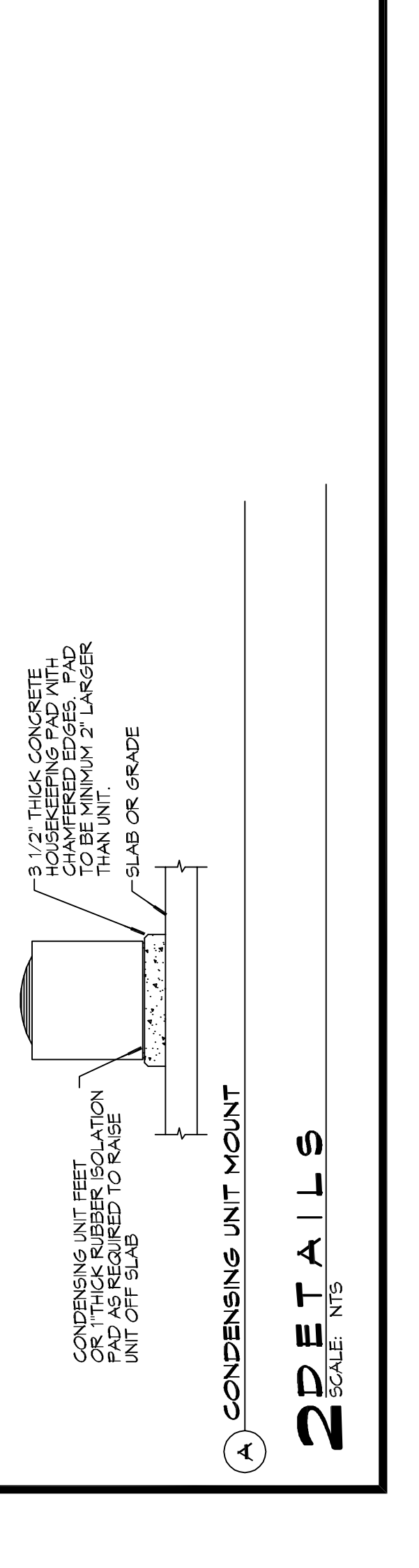
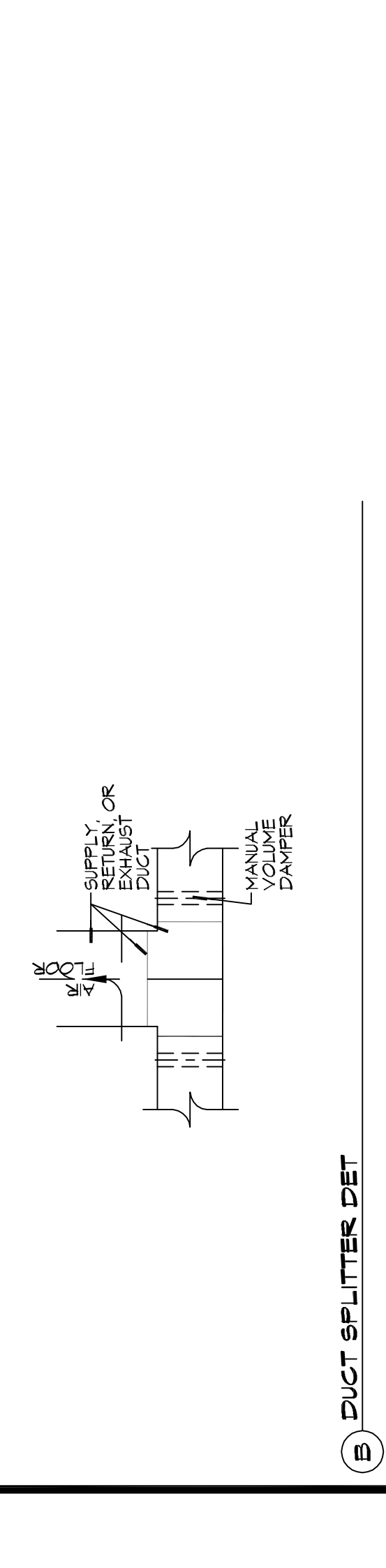
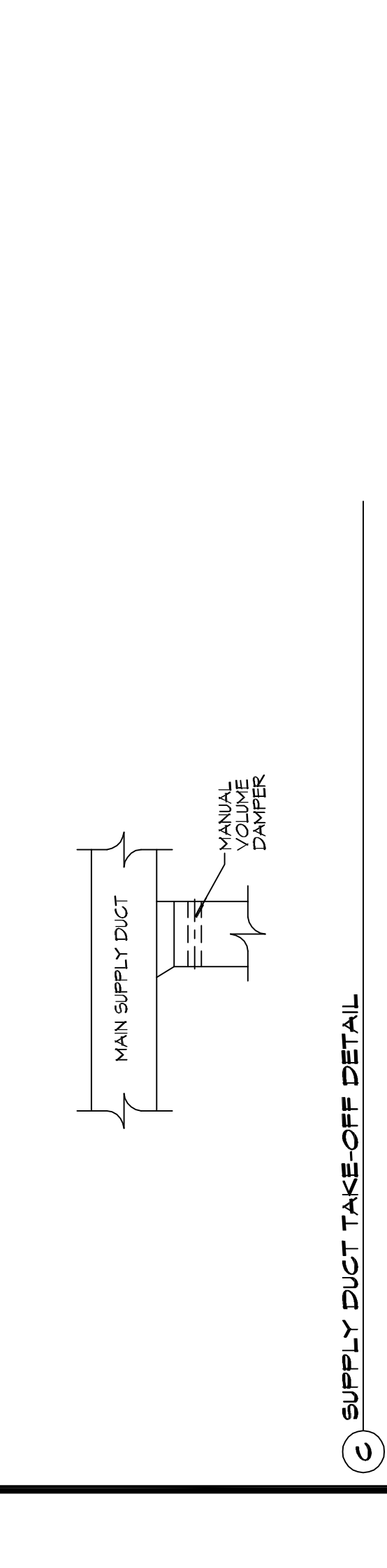
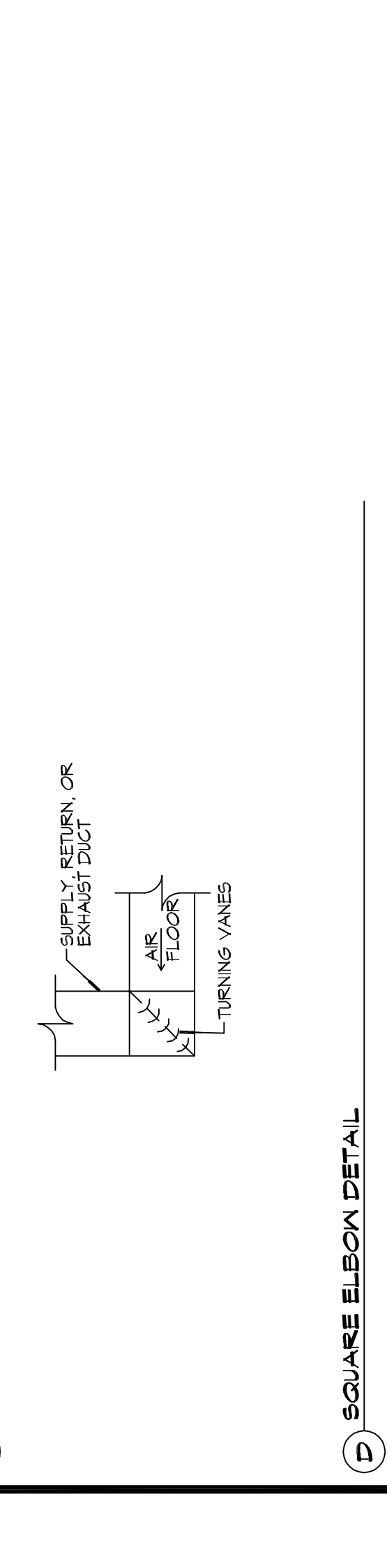
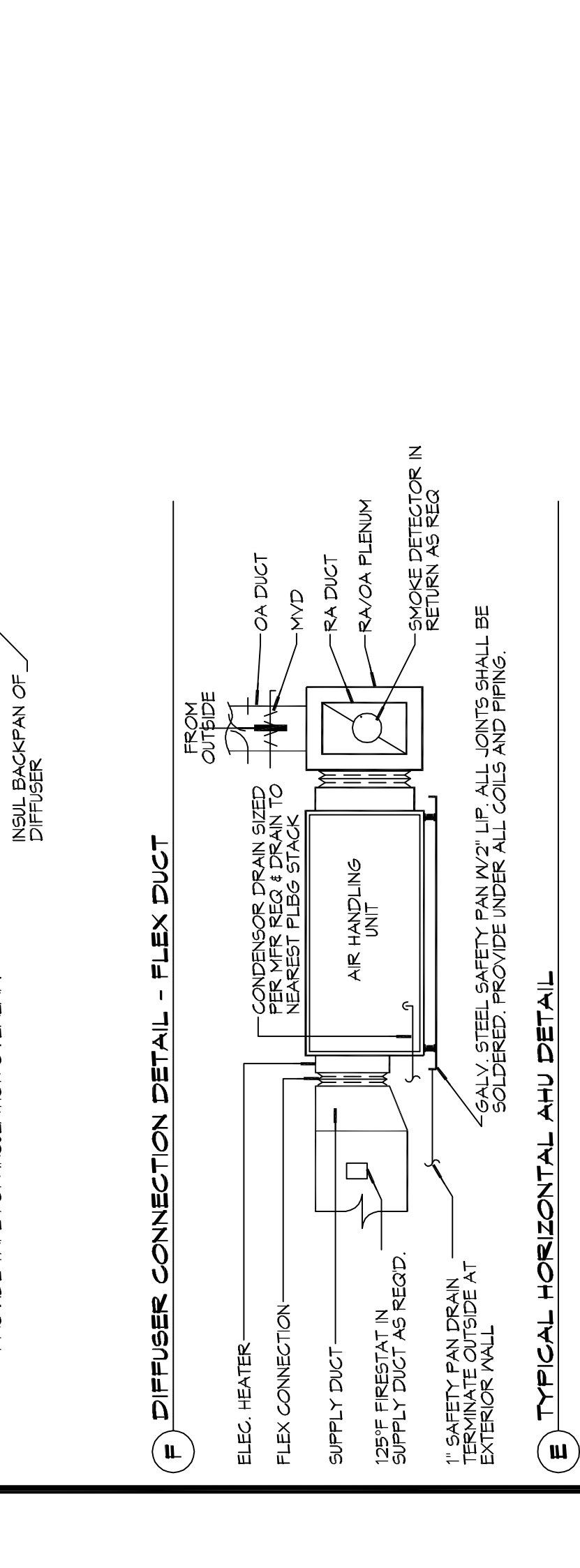
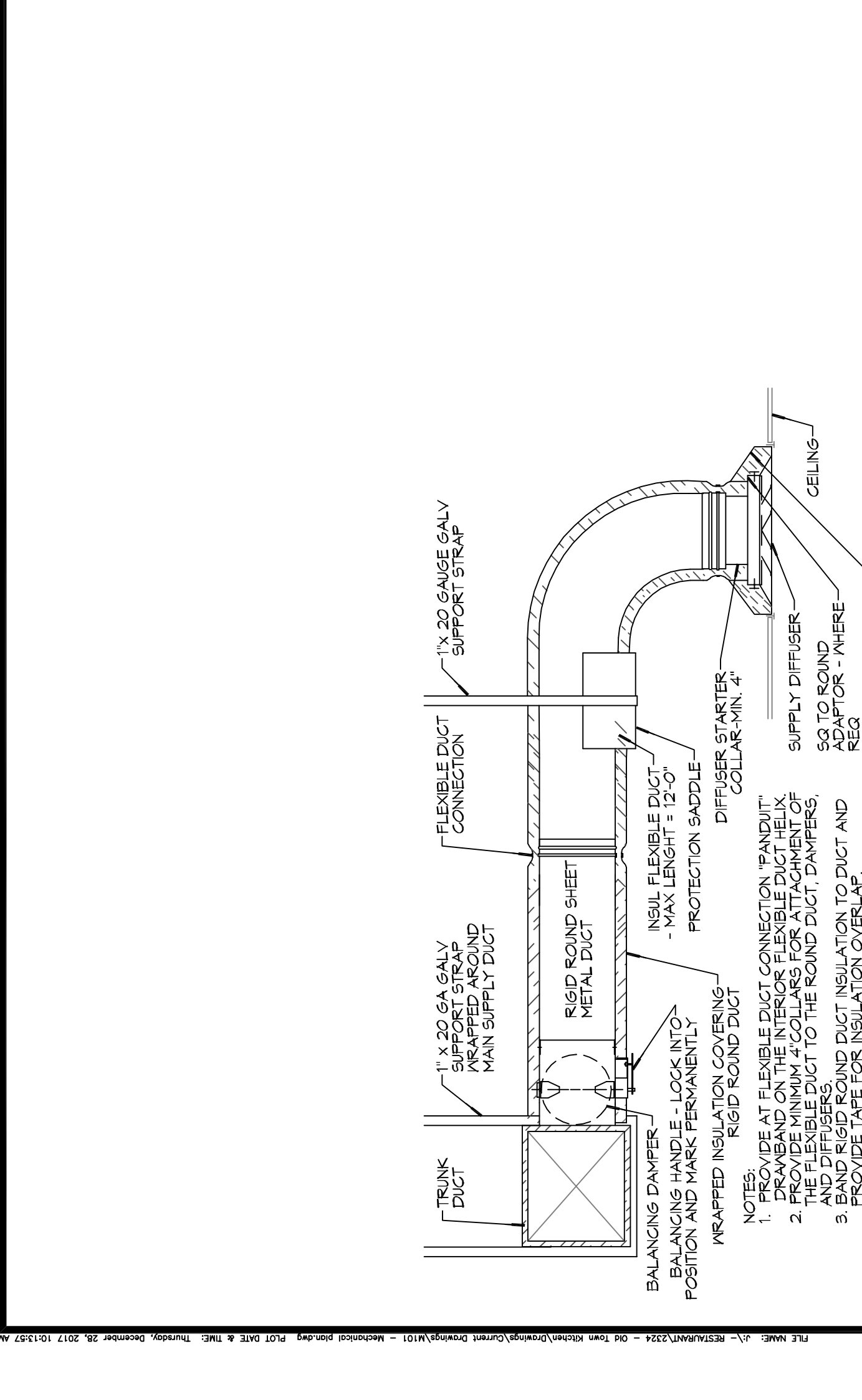
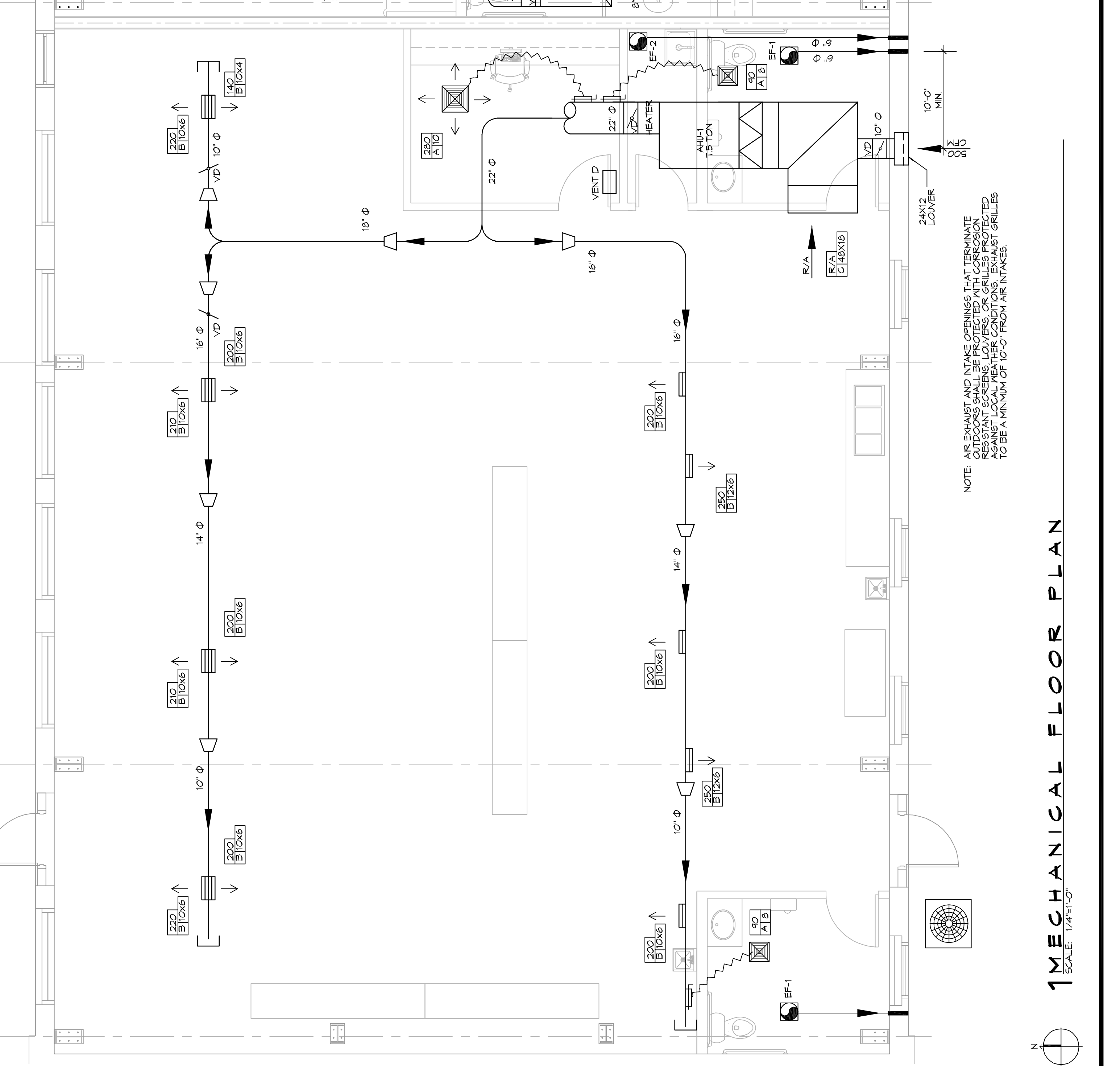
TOTAL BTU	HEAT	ELECTRICAL	COMMENTS
90,000 BTU (15 TON)	O.A.	VOLTAGE/MCA	NOTE: ALL A/C TO BE SPLIT-SYSTEM HVAC (FRAME OR EQUAL) ALL AHU TO BE SINGLE POINT CONNECTION
AHU #1	500	240V/30	P1-...

DIFFUSER/REGISTER SCHEDULE

TAG	SERVICE	SIZE	DESCRIPTION
A	SUPPLY	12X12 STEEL CONE DIFFUSER, WHITE FINISH WITH VOLUME CONTROL	
B	SUPPLY	COVERED STEEL DIFFUSER/ADJUSTABLE DOUBLE DEFLECTION ALUMINUM FINISH WITH VOLUME CONTROL	
C	RETURN	COVERED FACE SIDEWALL RETURN, WHITE FINISH, ALUMINUM FRAME	
D	RETURN	STEEL DOOR GRILLE, WHITE FINISH, SIGHT PROOF CORE	

EXHAUST FAN SCHEDULE

EXHAUST	LOCATION	CFM	VOLTAGE	TYPE	MANUFACTURER
EF-1	TOILET	90	120	VENT	BROAN OR EQUAL
EF-2	JANITOR	100	120	VENT	BROAN OR EQUAL



1 MECHANICAL FLOOR PLAN
 SCALE: 1/4"=1'-0"

