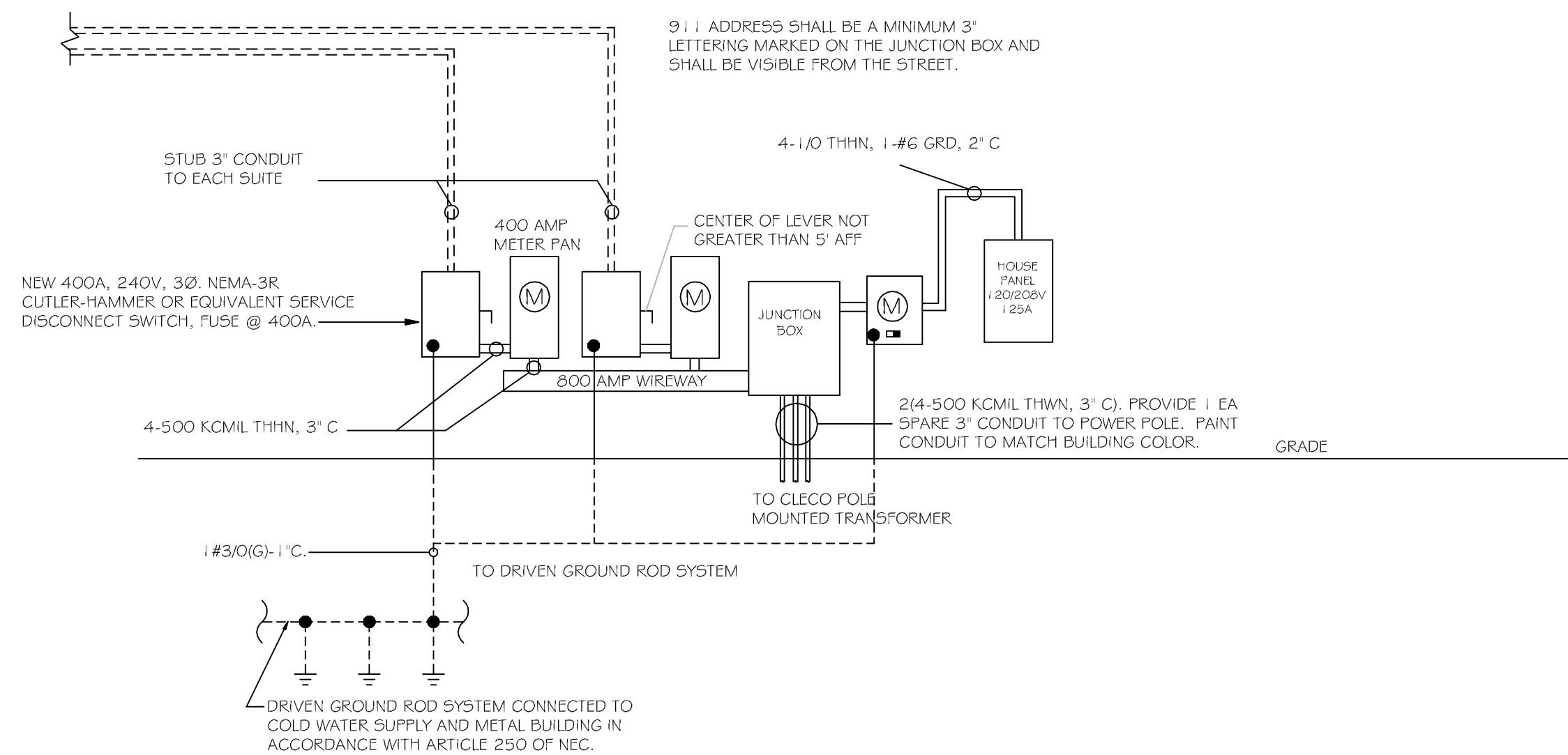
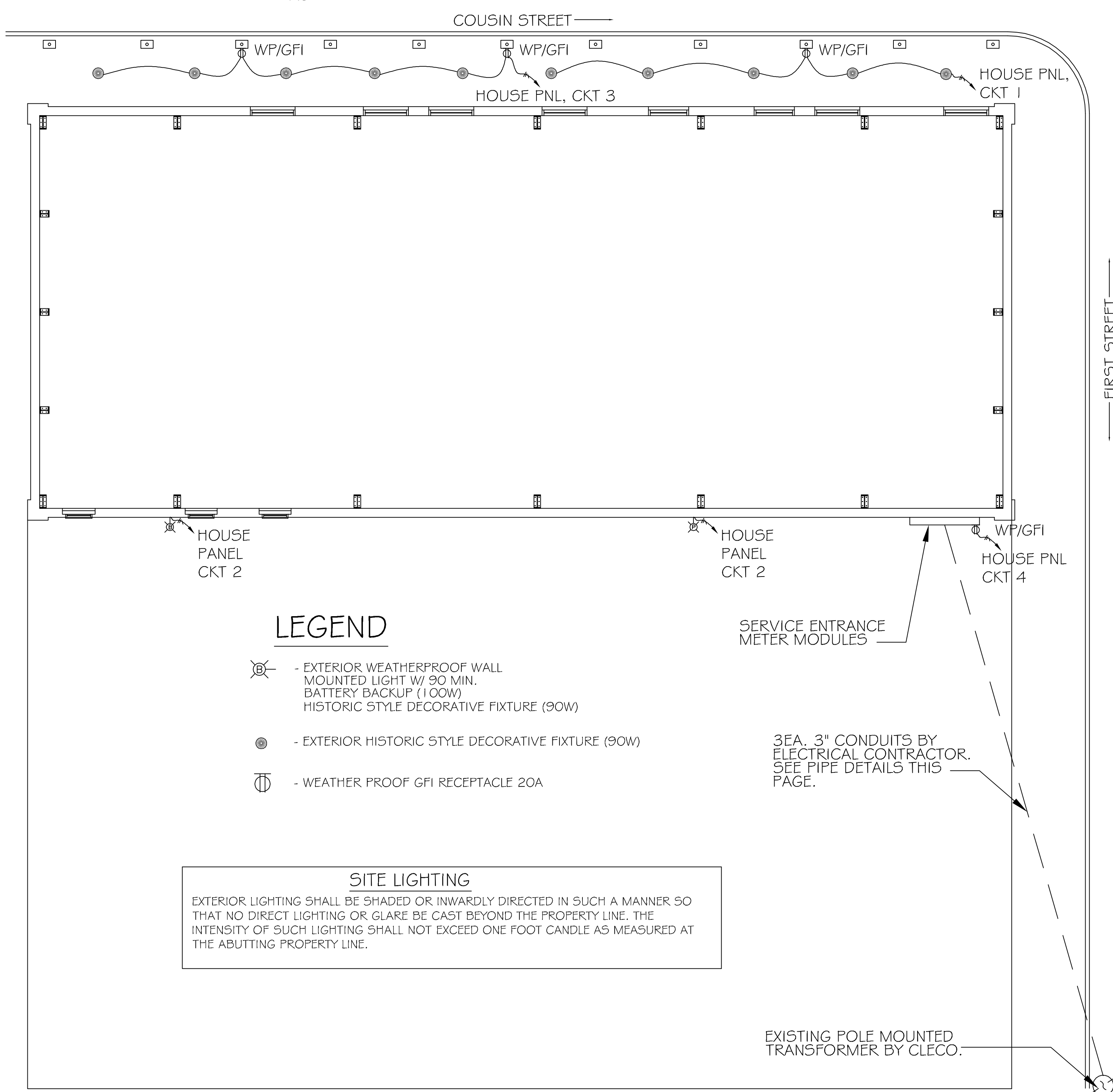




FILE NAME: J:\PROJECTS\RESTAURANT\102 - NEW RESTAURANT\102 - Panel Schedules.dwg PLOT DATE: 8/14/2017 14:25:34



**ZONE-LINE DIAGRAM**  
SCALE: NTS



**LEGEND**

- EXTERIOR WEATHERPROOF WALL MOUNTED LIGHT W/ 90 MIN. BATTERY BACKUP (1100W)  
HISTORIC STYLE DECORATIVE FIXTURE (90W)
- EXTERIOR HISTORIC STYLE DECORATIVE FIXTURE (90W)
- WEATHER PROOF GFI RECEPTACLE 20A

**SITE LIGHTING**  
EXTERIOR LIGHTING SHALL BE SHADED OR INWARDLY DIRECTED IN SUCH A MANNER SO THAT NO DIRECT LIGHTING OR GLARE BE CAST BEYOND THE PROPERTY LINE. THE INTENSITY OF SUCH LIGHTING SHALL NOT EXCEED ONE FOOT CANDLE AS MEASURED AT THE ABUTTING PROPERTY LINE.

3EA. 3" CONDUITS BY ELECTRICAL CONTRACTOR. SEE PIPE DETAILS THIS PAGE.

EXISTING POLE MOUNTED TRANSFORMER BY CLECO.

**1 ELECTRICAL SERVICE LAYOUT**  
SCALE: NTS

**DAMMON ENGINEERING, INC.**  
LOUISIANA & MISSISSIPPI  
Chief Engineer: Brian March, PE  
www.dammonengineering.com  
info@dammonengineering.com  
554 Old Spanish Trail  
Stidell, LA 70468  
PH: 985.649.4832

REVISIONS	DATE
# DESCRIPTION	
1	

SEAL:

**NEW RESTAURANT PIZZAZZ POINT**  
227 COUSIN STREET  
SLIDELL, LA 70468  
JOB No: 2351 | DATE: 10-27-17  
DRAWN BY: CKD | CHECKED BY: CKD

SHEET TITLE:  
PANEL SCHEDULES

DRAWING NUMBER:  
**E102**

