

LIFE-SAFETY INFORMATION

APPLICABLE CODES
 NFPA 101 LIFE-SAFETY CODE 2012
 OCCUPANCY A-2, ASSEMBLY USES INTENDED FOR FOOD AND DRINK CONSUMPTION (RESTAURANTS); CONSTRUCTION TYPE II B
 BUSINESS (CHAPTER 9B)

MIXED OCCUPANCY (REFERENCE CHAPTER 6)
OCCUPANT LOAD FACTOR (REFERENCE TABLE 7.3.1.2)
 1154 S.F. ASSEMBLY WITHOUT FIXED SEATS - UNCONCENTRATED (TABLES AND CHAIRS) - 15 NET/100 SF PER OCCUPANT = 77 OCCUPANTS
 841 S.F. KITCHENS, COMMERCIAL - 200 GROSS 841 S.F. / 200 = 4.5 OCCUPANTS
 164 S.F. OFFICE - BUSINESS AREAS - 100 GROSS 164 S.F. / 100 = 1.7 OCCUPANTS

TOTAL OCCUPANTS = 83.2

CLASSIFICATION OF HAZARD OF CONTENTS
 (REFERENCE: OCCUPANCY CHAPTER AND 8.2.2: SPECIFY LOW, ORDINARY, OR HIGH)
CONSTRUCTION TYPE(S) (REFERENCE: CHAPTERS, TABLE A.8.2.1.2 AND COMMENTARY TABLE 8.1 IN HANDBOOK)
 II B

MINIMUM EXIT SEPARATION DISTANCE FOR REMOTELY LOCATED EXITS
 (REFERENCE: SECTION 7.5; SPECIFY 1/2 OR 1/3 DIAGONAL DISTANCE OF AREA SERVED)
 1/2 DIAGONAL = N/A

MAXIMUM DEAD-END CORRIDORS (REFERENCE: OCCUPANCY CHAPTER AND TABLE A.7.6)
MAXIMUM COMMON PATH OF TRAVEL DISTANCE (REFERENCE: OCCUPANCY CHAPTER AND TABLE A.7.6)
MAXIMUM TRAVEL DISTANCE TO EXITS (REFERENCE: OCCUPANCY CHAPTER AND TABLE A.7.6)
 MAIN ENTRANCE MUST BE SIGNED TO ACCOMMODATE 1/2 OCCUPANT LOAD OF BUILDING

EXTINGUISHMENT REQUIREMENTS **SPRINKLER (NOT REQUIRED)**
DETECTION, ALARM, AND COMMUNICATION SYSTEMS NO
ALLOWABLE HEIGHT AND BUILDING AREA PER IBC EQUIVALENT CONSTRUCTION TYPE

BUILDING CODE INFORMATION

APPLICABLE CODES
 IBC 2012
 OCCUPANCY A-2, ASSEMBLY USES INTENDED FOR FOOD AND DRINK CONSUMPTION (RESTAURANTS) (IBC 2015 CHAPTER 10)

OCCUPANT LOAD CALCULATIONS (TABLE 1004.1.2)
 BUSINESS AREAS = 164 SQ. FT. 100 SF PER OCCUPANT (GROSS) 1.7 OCCUPANTS
 ASSEMBLY WITHOUT FIXED SEATS - UNCONCENTRATED (TABLES AND CHAIRS) 15 NET 77 OCCUPANTS
 KITCHENS, COMMERCIAL 200 GROSS 4.5 OCCUPANTS
TOTAL OCCUPANTS 83.2

CONSTRUCTION TYPE(S) (TABLE 503)
 II B (SECTION 503)

ALLOWABLE HEIGHT AND BUILDING AREA LIMITED BY TYPE OF CONSTRUCTION
 MAXIMUM HEIGHT IN STORES (SECTION 503 & 504, TABLE 503) 2
 MAXIMUM AREA IN SQUARE FEET (SECTION 503, 506 & 507, TABLE 503) 9,500

WIND SPEED DESIGN REQUIREMENTS

THIS BUILDING SHALL BE DESIGNED WITH IBC SEC 1609 AS A FULLY ENCLOSED BLDG USING THE FOLLOWING INFORMATION:

WIND DESIGN DATA:
 DETERMINATION OF WIND LOADS SHALL BE IN ACCORDANCE WITH IBC SEC 1609.3 (A), (B), OR (C) DEPENDING ON THE RISK CATEGORY
 BASIC WIND SPEED (3 SECOND GUST) = 132 MPH (IBC FIG 1609C)
 RISK FACTOR: CATEGORY I BLDG SURFACE ROUGHNESS = C
 TOPOGRAPHIC FACTOR = 1 EXPOSURE = C
 DESIGN WIND PRESSURE (ASCE 7-10 TABLE 28.6-1): 34.1 PSF
 INTERNAL PRESSURE COEFFICIENT (ASCE 7-10 TABLE 26.11-1): + 0.18
 LIVE LOADS (IBC SEC 1607)
 STORAGE, LIGHT (IBC TABLE 1607.1): 125 PSF
 ROOF LIVE LOADS (IBC TABLE 1607.1): 20 PSF UNIFORM, 300 LB CONCENTRATED
 SNOW LOADS (IBC TABLE 1609):
 GROUND SNOW LOAD (IBC FIG 1608.2): 5 PSF

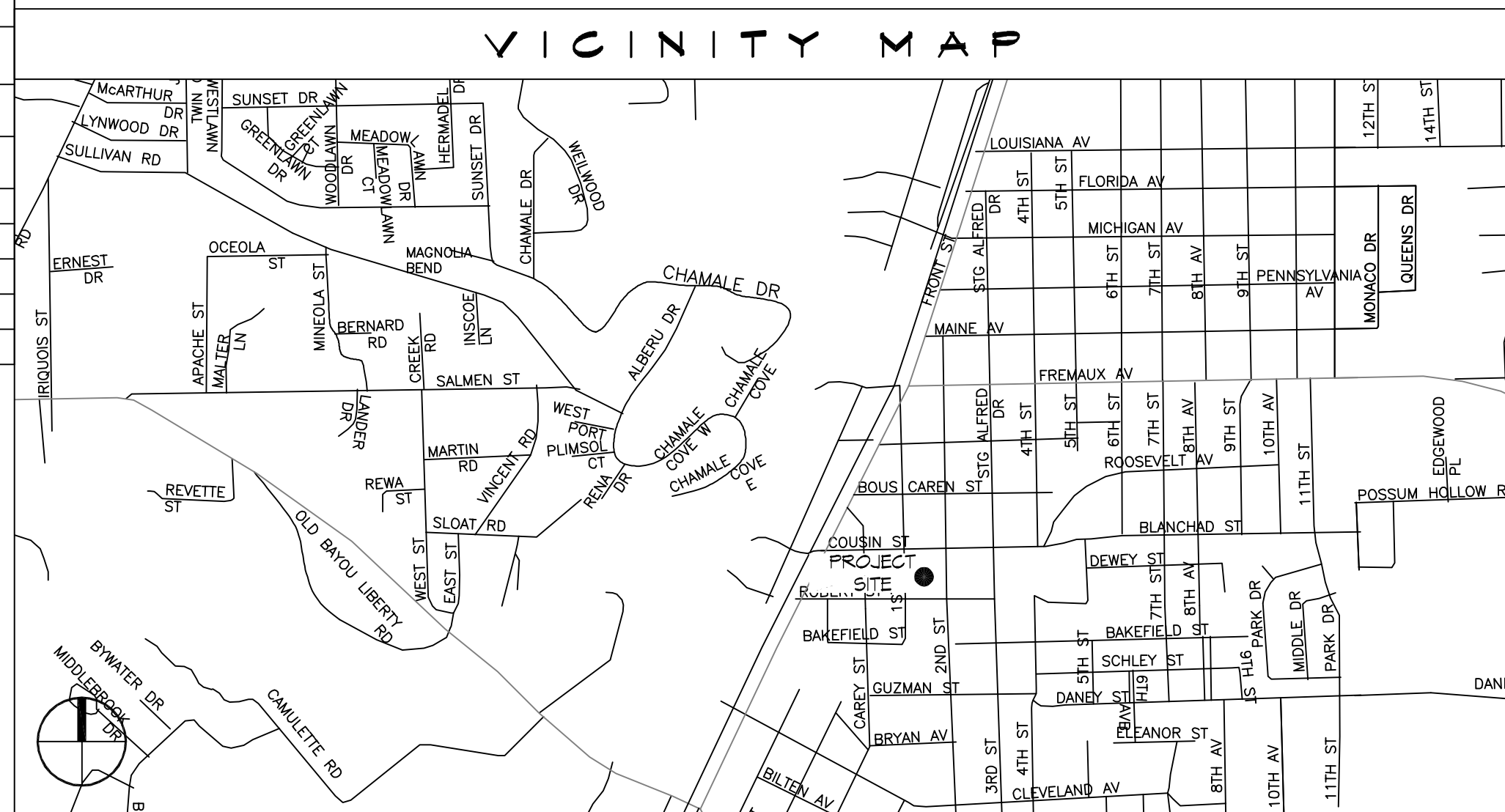
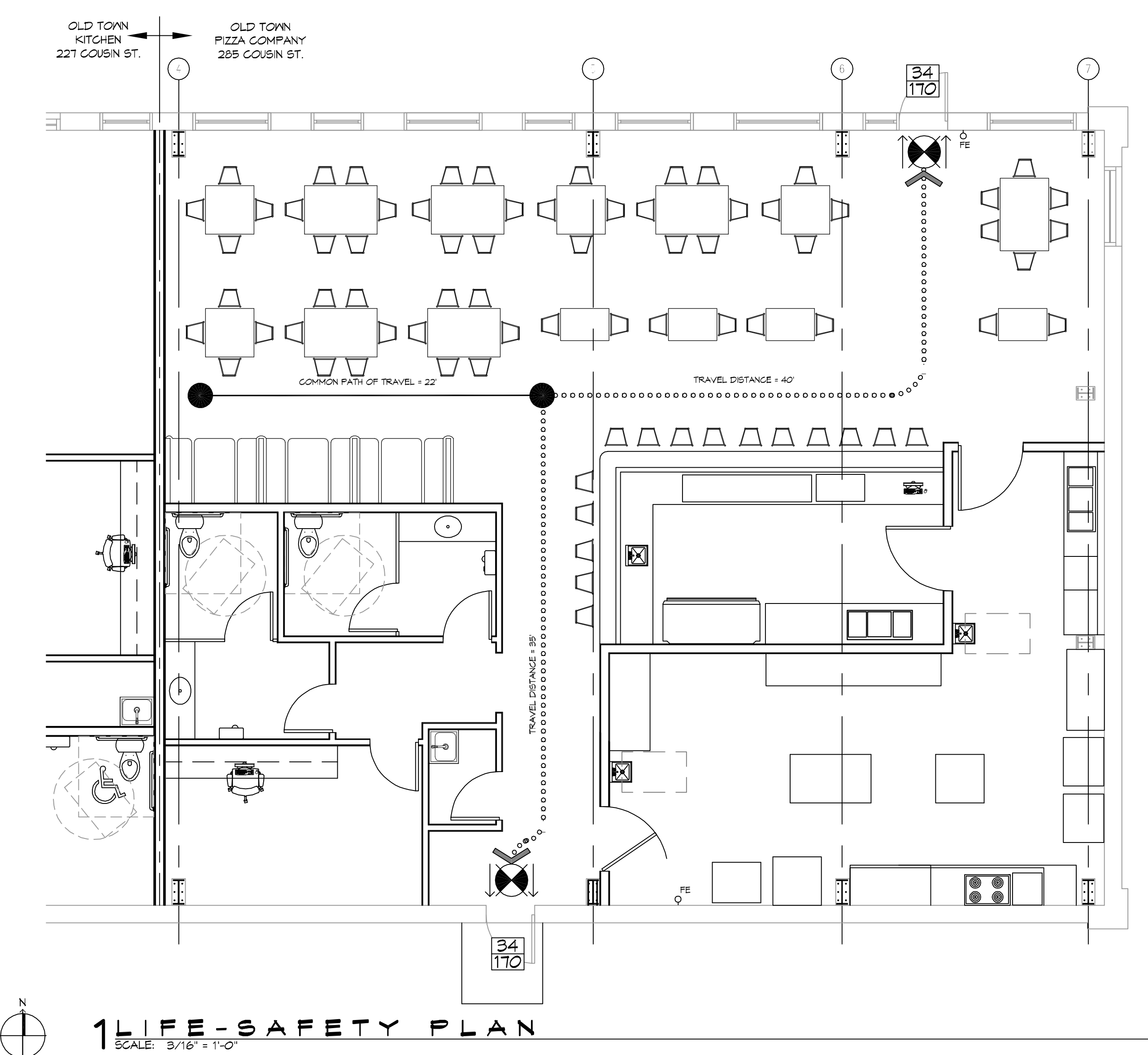
FLOOD ZONE INFORMATION

BASED ON THE SURVEY OF THIS PROPERTY BY R.M. KREBBS LLC, THIS PROPERTY IS IN SPECIAL FLOOD HAZARD AREA. F.I.R.M. COMMUNITY MAP NO 225204 0010 C
 FLOOD ZONE: AE BASE FLOOD ELEVATION: NGVD 9.0'
 ELEVATIONS REFER TO NGVD 1929 DATUM

LIFE-SAFETY LEGEND

SYMBOL	DESCRIPTION
	EXITS
	DOOR FIRE RATING (MINUTES)
	DOOR WIDTH/EGRESS CAPACITY
	EXIT LIGHT
	FIRE EXTINGUISHER IV WALL MTD BRACKET
	COMMON PATH OF TRAVEL
	TRAVEL DISTANCE
	DECISION POINT

OLD TOWN PIZZA COMPANY
 285 COUSIN STREET
 SLIDELL, LA 70458



SHEET INDEX

SHEET #	SHEET TITLE
G101	GENERAL INFORMATION SHEET
G102	ACCESSIBILITY INFORMATION
C101	SITE PLAN
C102	SITE UTILITIES PLAN
A101	FLOOR PLAN
P101	PLUMBING PLAN
M101	MECHANICAL FLOOR PLAN, SCHEDULES & DETAILS
E101	POWER AND LIGHTING PLAN
E102	PANEL SCHEDULES

GENERAL NOTES

- ALL MATERIALS AND WORK, INCIDENTAL TO THE CONSTRUCTION OF THIS PROJECT, SHALL CONFORM TO ALL GOVERNING CODES, AND REGULATIONS OF AGENCIES IN AUTHORITY.
- CONTRACTOR SHALL PROVIDE ALL PUBLIC PROTECTIONS NECESSARY AS REQUIRED BY LAW.
- THE DRAWINGS AND ANY SUBSEQUENTLY ISSUED ADDENDA, AMENDMENTS OR SUCH CHANGE ORDERS APPROVED BY THE OWNER AND THE CONTRACTOR ARE PART OF THESE CONTRACT DOCUMENTS.
- DO NOT SCALE DRAWINGS. CONSULT WITH THE ENGINEER REGARDING ANY ITEMS IN THE CONTRACT DOCUMENTS THAT REQUIRE CLARIFICATION.
- TRASH SHALL BE REMOVED FROM THE SITE NOT LESS THAN TWICE MONTHLY.
- THE GENERAL CONTRACTOR SHALL VERIFY EXISTING CONDITIONS PRIOR TO COMMENCING WORK AND REPORT ANY AND ALL DISCREPANCIES TO THE ARCHITECT.
- CONTRACTOR VEHICLES AND EQUIPMENT NECESSARY FOR CONSTRUCTION MAY BE PARKED ON THE SITE. OTHER VEHICLES PARKED ON THE SITE REQUIRE THE OWNER'S PERMISSION.
- ALL MATERIALS/EQUIPMENT SHALL BE INSTALLED PER MANUFACTURER'S RECOMMENDATIONS. WORK NOT CONSISTENT WITH MANUFACTURER'S RECOMMENDATIONS WILL BE REJECTED BY OWNER/ARCHITECT.

DAMMON ENGINEERING, INC.
 LOUISIANA & MISSISSIPPI
 Chief Engineer: Brian Mitchell, PE
 554 Old Spanish Trail
 Slidell, LA 70458
 www.dammonengineering.com
 info@dammonengineering.com
 PH: 985.649.2832

REVISIONS	DATE
#	DESCRIPTION

SEAL:

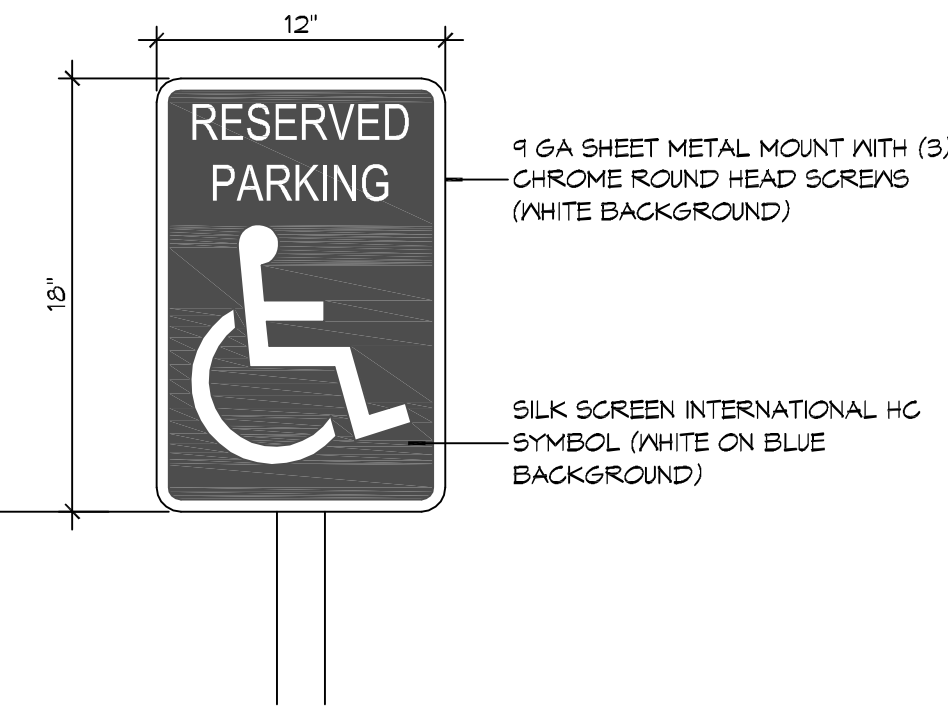
NEW RESTAURANT
 OLD TOWN PIZZA COMPANY

SHEET TITLE:
 GENERAL INFORMATION SHEET

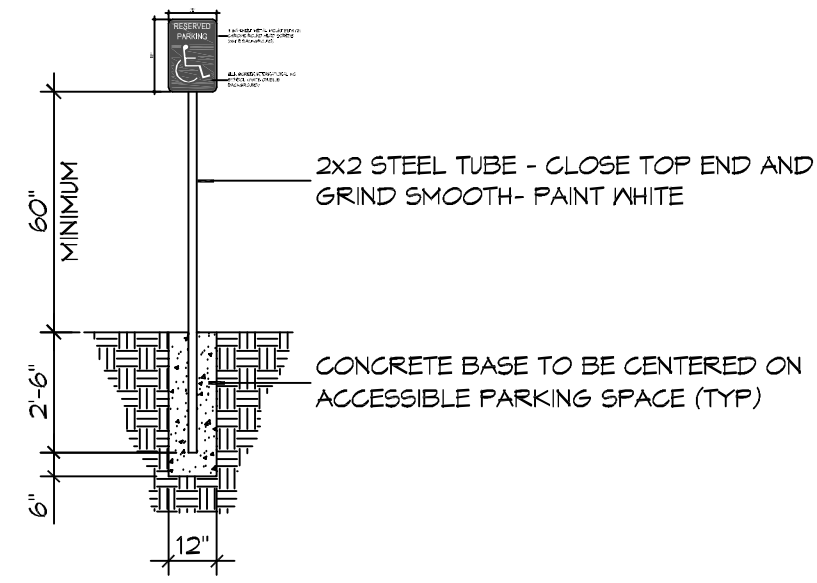
DRAWING NUMBER:
G101

SHEET No: 1 of 4

FILE NAME: J:\RESTAURANT\G102 - Old Town Pizzeria\Access\Drawings\G102 - ADA Accessibility.dwg PLOT DATE: 8/11/2011 11:21:11 AM

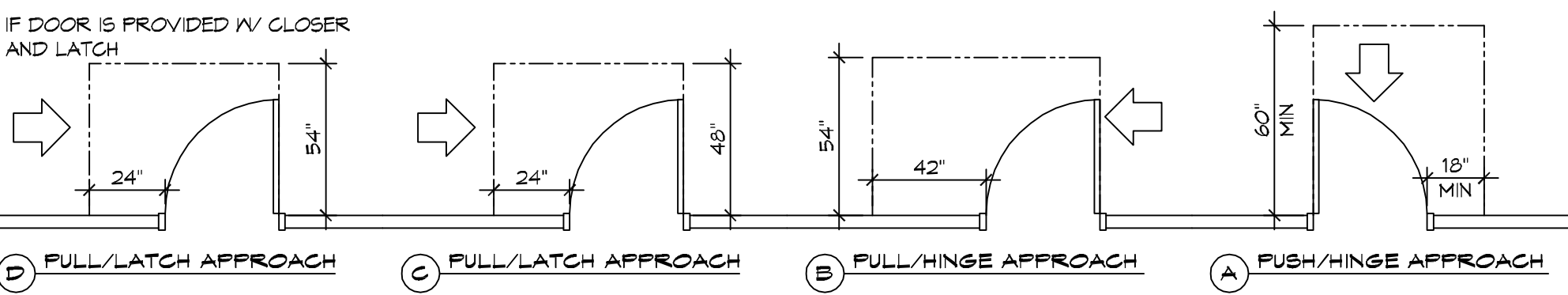
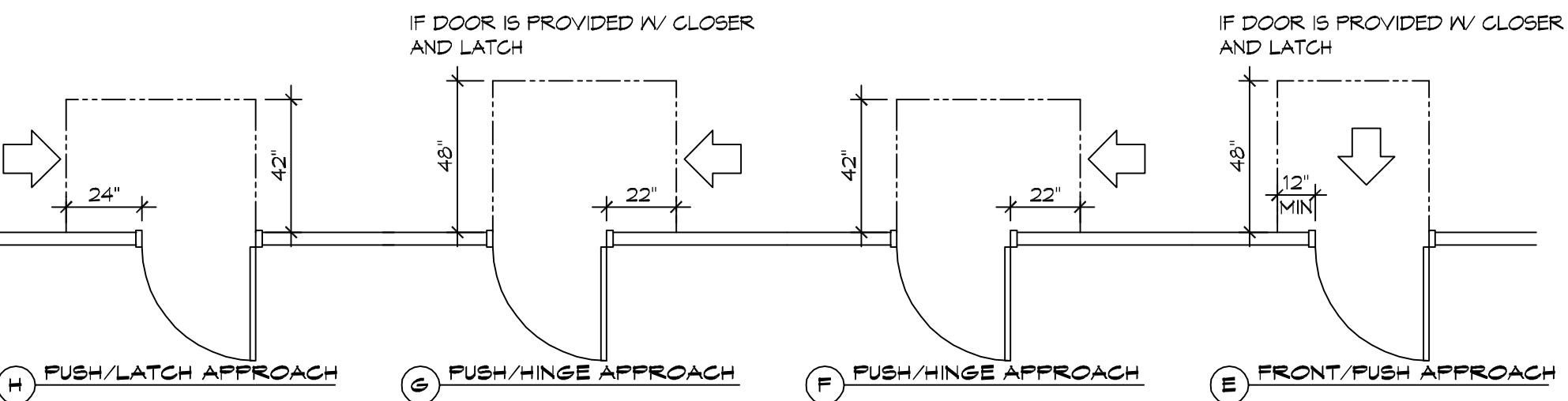
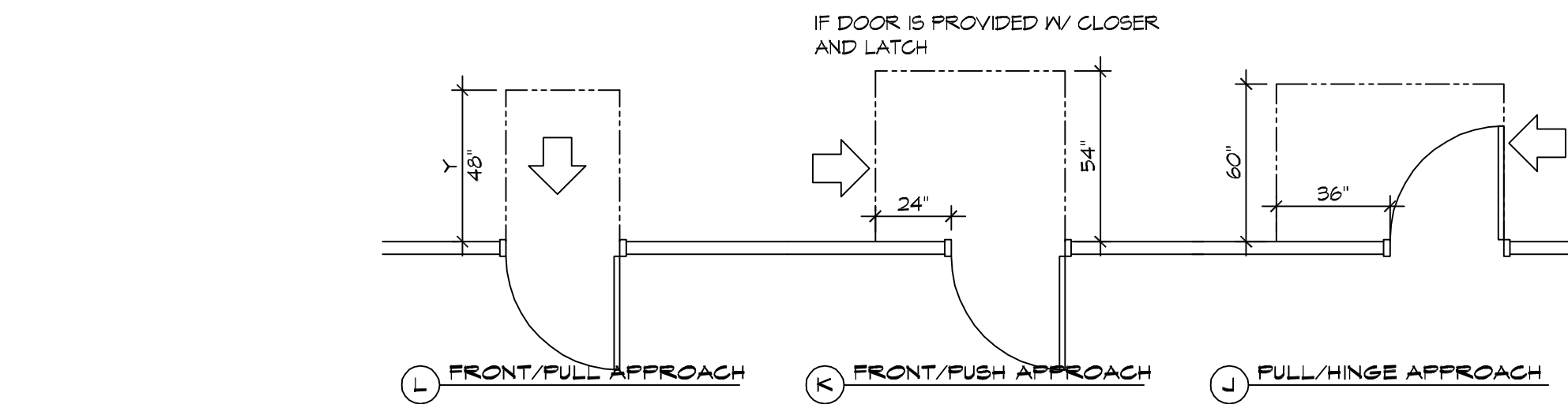


1 GA SHEET METAL MOUNT WITH (3) CHROME ROUND HEAD SCREWS (WHITE BACKGROUND)
 SILK SCREEN INTERNATIONAL HC SYMBOL (WHITE ON BLUE BACKGROUND)



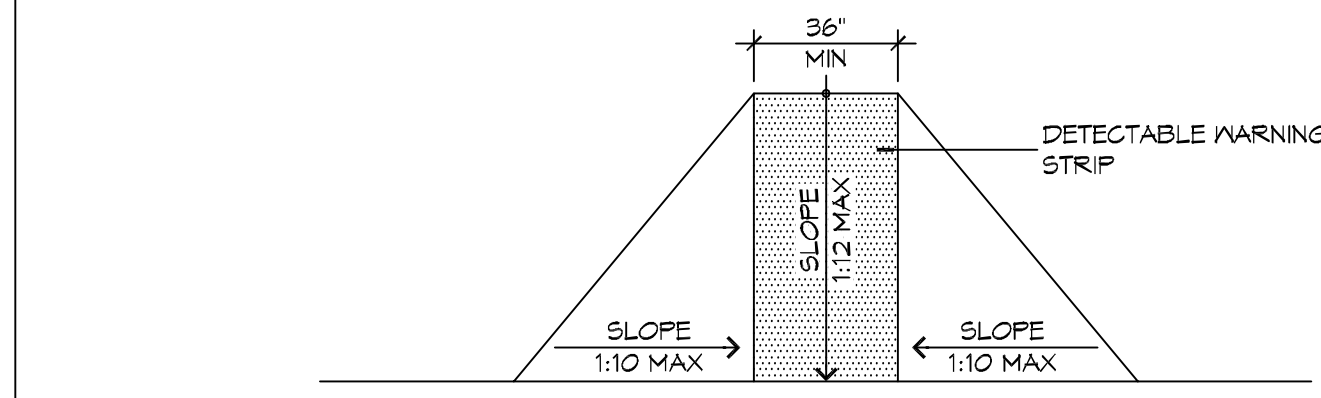
5 ACCESSIBLE SIGN

SCALE: NTS

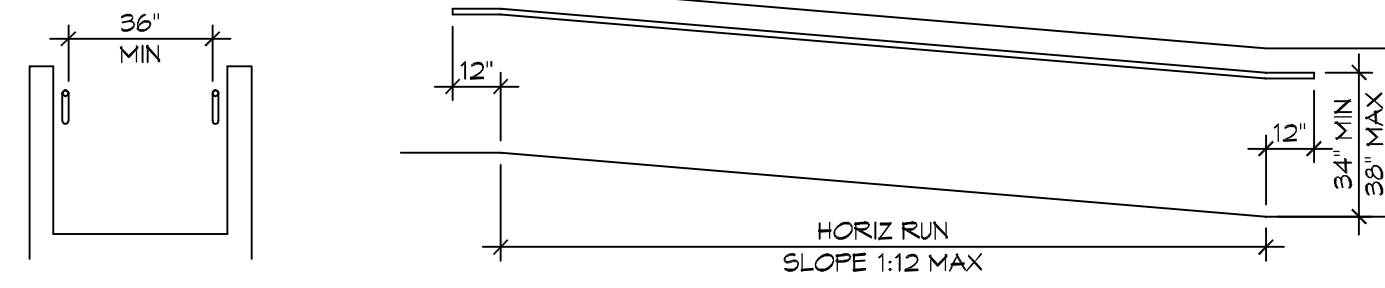


3 ADA DOOR CLEARANCES

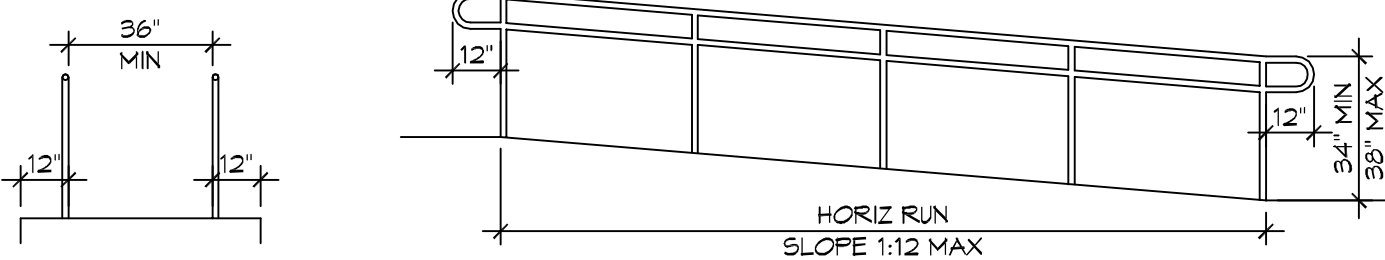
SCALE: 1/4" = 1'-0"



F FLARED RAMPS



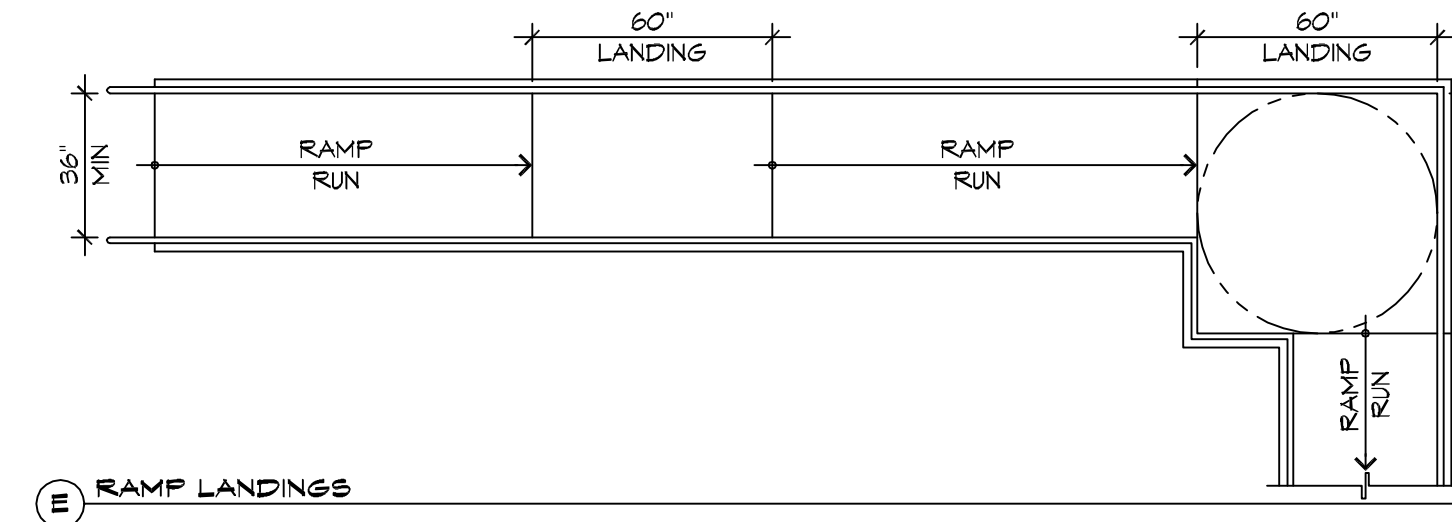
D WALL EDGE PROTECTION



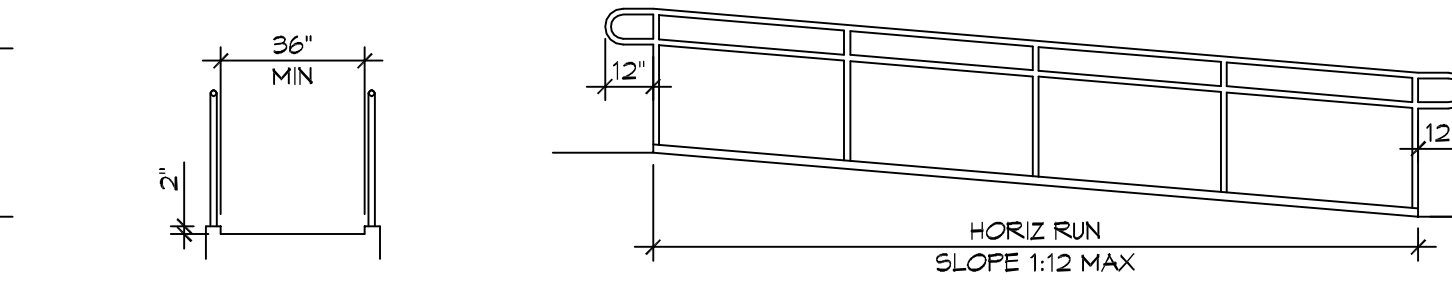
B EXTENDED SURFACE EDGE PROTECTION

4 ACCESSIBLE RAMPS

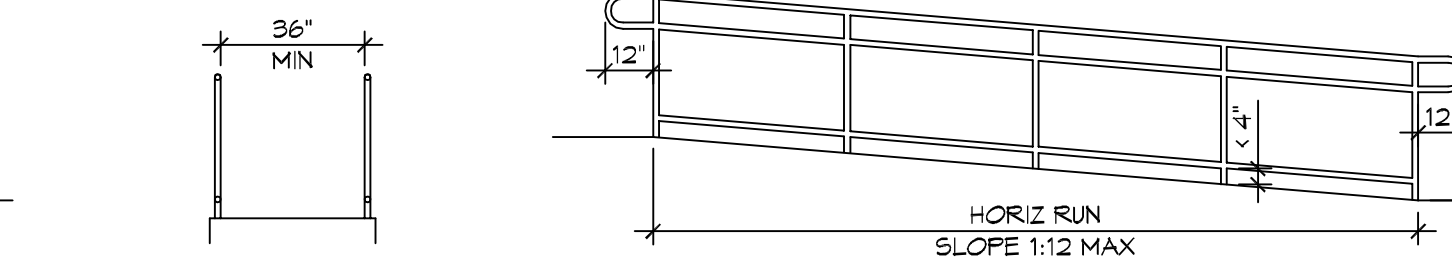
SCALE: 1/4" = 1'-0"



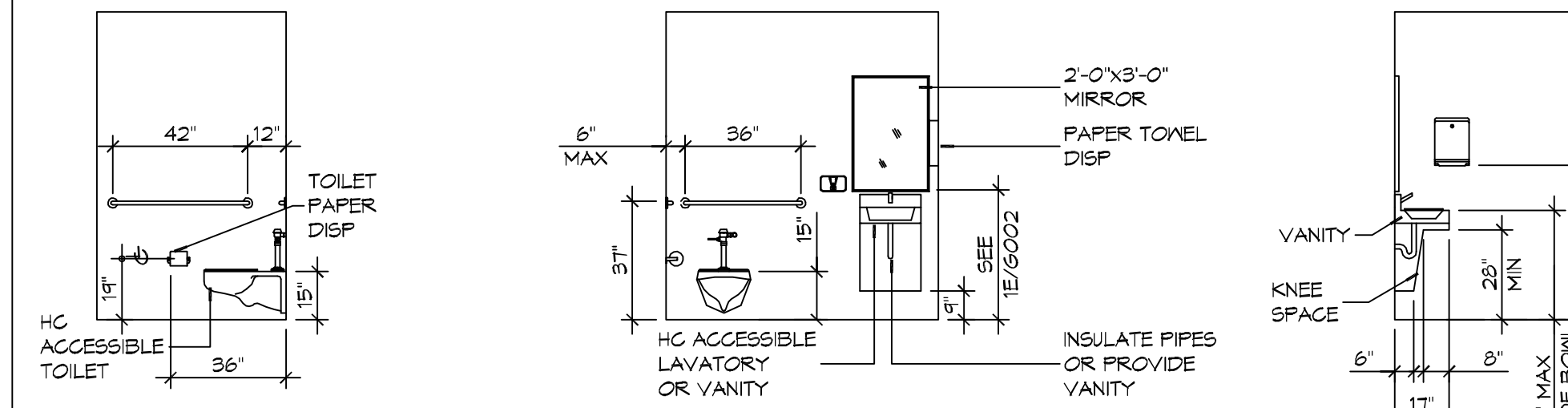
E RAMP LANDINGS



C CURB EDGE PROTECTION

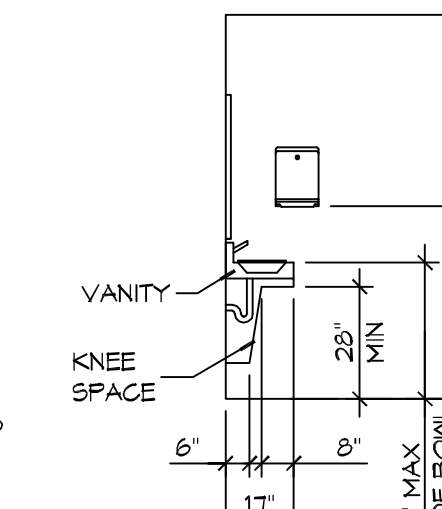


A BARRIER EDGE PROTECTION

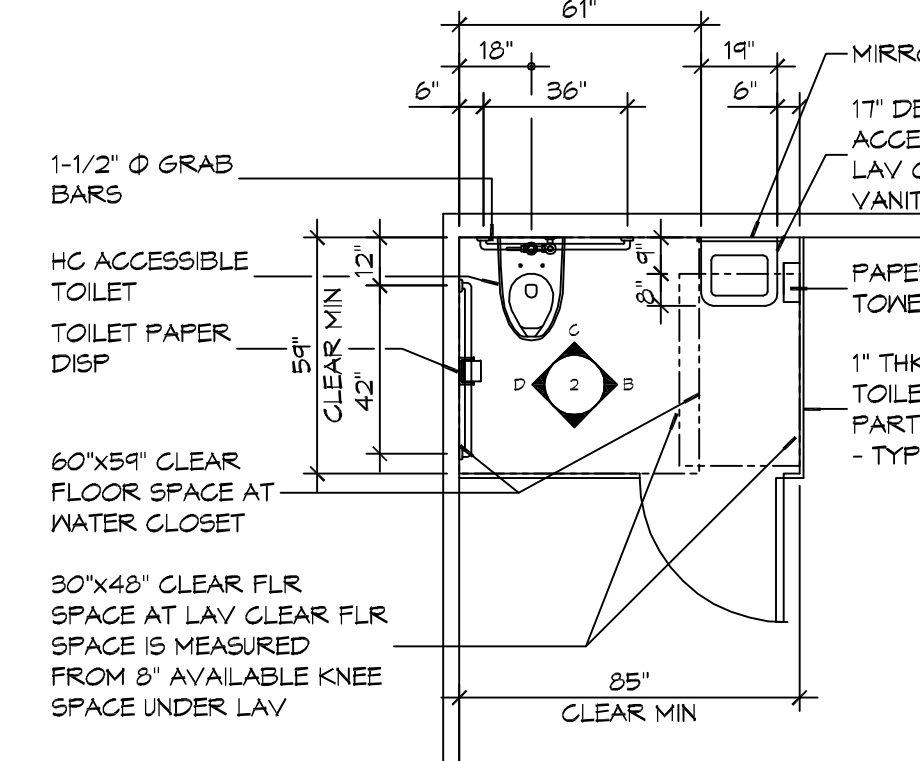


D INTERIOR ELEVATION

C INTERIOR ELEVATION



B INTERIOR ELEVATION



A FLOOR PLAN

2 RESTROOM CLEARANCES

SCALE: 1/4" = 1'-0"

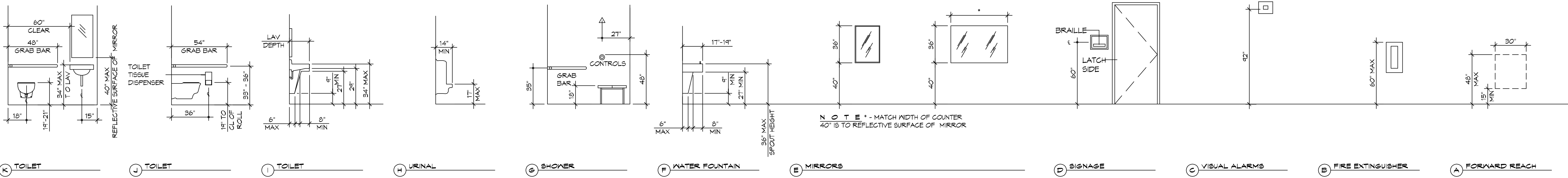
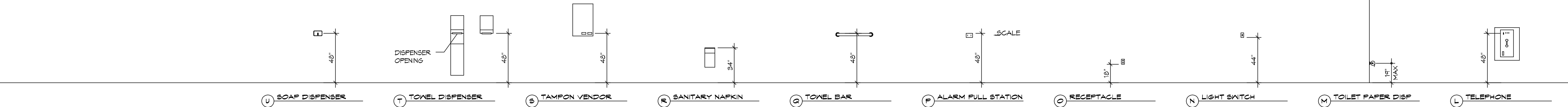
ACCESSIBILITY NOTES

DOOR CLEARANCE NOTES
 ALCOVES SHALL COMPLY WITH THE CLEARANCES FOR FRONT APPROACHES, 31/3002 - 31/3002.
 DOOR HARDWARE SHALL BE LEVER TYPE.
 MAX DOOR OPENING FORCE:
 INTERIOR HINGED DOORS: 5 LBF
 EXTERIOR HINGED DOORS: 8.5 LBF
 SLIDING OR FOLDING DOORS: 5 LBF
 FIRE DOORS SHALL HAVE THE MINIMUM OPENING FORCE ALLOWABLE BY THE APPROPRIATE ADMINISTRATIVE AUTHORITY.
 HARDWARE REQUIRED FOR ACCESSIBLE DOOR PASSAGE SHALL BE MOUNTED NO HIGHER THAN 48" AND NOT LESS THAN 34" ABOVE FINISHED FLOOR.
 THE FLOOR OR GROUND AREA WITHIN THE REQUIRED CLEARANCES SHALL BE LEVEL AND CLEAR.
 THRESHOLDS AT DOORWAYS SHALL NOT EXCEED 3/4" IN HEIGHT FOR EXTERIOR SLIDING DOORS OR 1/2" FOR OTHER TYPES OF DOORS. RAISED THRESHOLDS AND FLOOR LEVEL CHANGES AT ACCESSIBLE DOORWAYS SHALL BE BEVELED WITH A SLOPE NO GREATER THAN 1:2.
 DOORWAYS SHALL HAVE A MINIMUM CLEAR OPENING OF 32" WITH THE DOOR OPEN 90°, MEASURED BETWEEN THE FACE OF THE DOOR AND THE OPPOSITE STOP. OPENINGS MORE THAN 24" IN DEPTH SHALL MAINTAIN 32" MIN CLEARANCE.

RAMP NOTES
 THE CLEAR SPACE BETWEEN THE HANDRAIL AND THE WALL SHALL BE MIN 1-1/2" CLEAR.
 GRIPPING SURFACES SHALL BE CONTINUOUS AND UNOBSTRUCTED.
 ENDS OF HANDRAILS SHALL BE EITHER ROUNDED OR RETURNED SMOOTHLY TO FLOOR, WALL, OR POST.
 HANDRAILS SHALL NOT ROTATE WITHIN THEIR FITTINGS.
 THE CROSS SLOPE OF RAMP SURFACES SHALL BE NO GREATER THAN 1:50.
 OUTDOOR RAMPS AND THEIR APPROACHES SHALL BE DESIGNED SO THAT WATER WILL NOT ACCUMULATE ON WALKING SURFACES.
 RAMPS AND LANDINGS WITH DROP-OFFS SHALL HAVE CURBS, WALLS, RAILINGS, OR PROJECTING SURFACES THAT PREVENT PEOPLE FROM SLIPPING OFF THE RAMP. CURBS SHALL BE A MINIMUM OF 2" HIGH.
 HANDRAILS SHALL BE PROVIDED ALONG BOTH SIDES OF RAMP SEGMENTS. THE INSIDE HANDRAIL ON SWITCHBACK OR DOGLEG RAMPS SHALL ALWAYS BE CONTINUOUS.
 RAMP LANDINGS SHALL BE AT LEAST AS WIDE AS THE RAMP RUN LEADING TO IT.

GENERAL SITE ACCESSIBILITY NOTES

- ACCESSIBILITY SIGNAGE SHALL COMPLY WITH ADAAG 2010 GUIDELINES SECTION 703.7.
- SEE SHEET 0003 FOR ACCESSIBLE RAMP AND HANDRAIL DESIGNS WHERE THEY OCCUR.
- ALL ACCESSIBLE PARKING SPACES AND AISLES THAT SERVE THEM SHALL COMPLY WITH ADAAG 2010 GUIDELINES SECTIONS 502.4 AND 502.5.
- OPENINGS IN GROUND SURFACES SHALL COMPLY WITH ADAAG 2010 GUIDELINES SECTION 302.3.
- VERTICAL CHANGES IN ELEVATION ALONG ALL ACCESSIBLE ROUTES SHALL COMPLY WITH ADAAG 2010 GUIDELINES SECTIONS 303.2, 303.3, AND 303.4.
- PARKING SPACES DESIGNATED AS ACCESSIBLE SHALL INCLUDE THE INTERNATIONAL SYMBOL OF ACCESSIBILITY COMPLYING WITH ADAAG 2010 GUIDELINES SECTIONS 703.7.2.1 AND 502.6.
- ALL ACCESSIBLE PARKING SPACES AND ROUTES SERVING THEM SHALL HAVE A ROUGH, SLIP-RESISTANT SURFACE OR LIGHT BROOM FINISH IN COMPLIANCE WITH ADAAG 2010 GUIDELINES SECTION 502.1.



1 MOUNTING HEIGHTS

SCALE: 1/4" = 1'-0"

DAMMON ENGINEERING, INC.
 LOUISIANA & MISSISSIPPI
 Chief Engineer: Brian Wistich, PE
 554 Old Spanish Trail
 Slidell, LA 70688
 www.dammonengineering.com
 info@dammonengineering.com
 PH: 985.649.9532

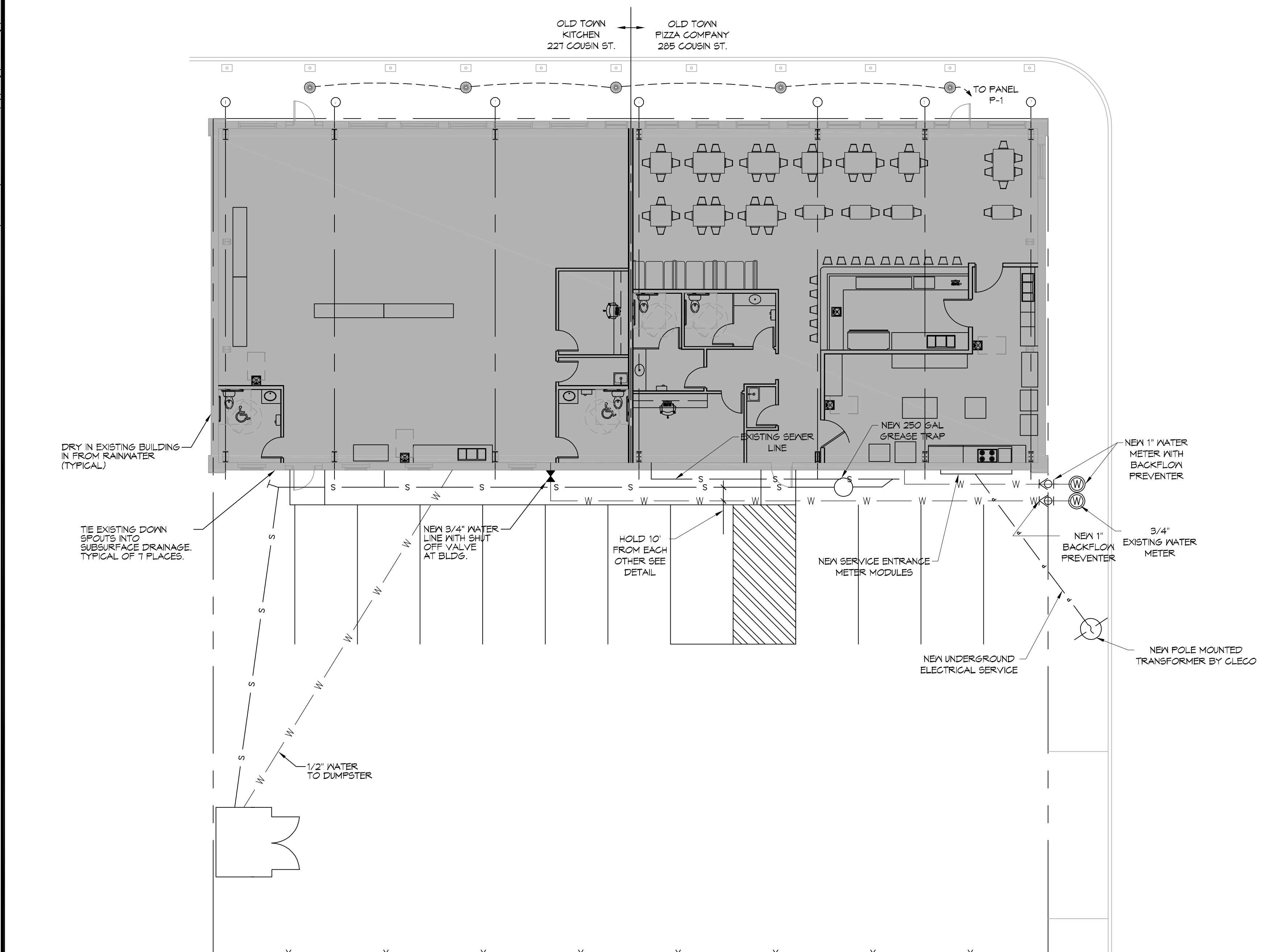
REVISIONS	DATE	DESCRIPTION

SEAL:
 11-21-11
 2891 DATE: 11-21-11
 DRAWN BY: GSK
 CHECKED BY: GSK

NEW RESTAURANT
OLD TOWN PIZZERIA COMPANY
 2895 COUSIN STREET
 SLIDELL, LA 70459
 JOB No: 2891
 DRAWN BY: GSK
 CHECKED BY: GSK

SHEET TITLE:
ACCESSIBILITY INFORMATION
 DRAWING NUMBER:
G102
 SHEET No: 2 of 4

FILE NAME: J:\PROJECTS\10331 - Old Town Pizzeria Company\Drawings\C102 - Site Utilities.dwg PLOT DATE: 8/18/16 Tuesday, November 21, 2017 1:29:34 PM

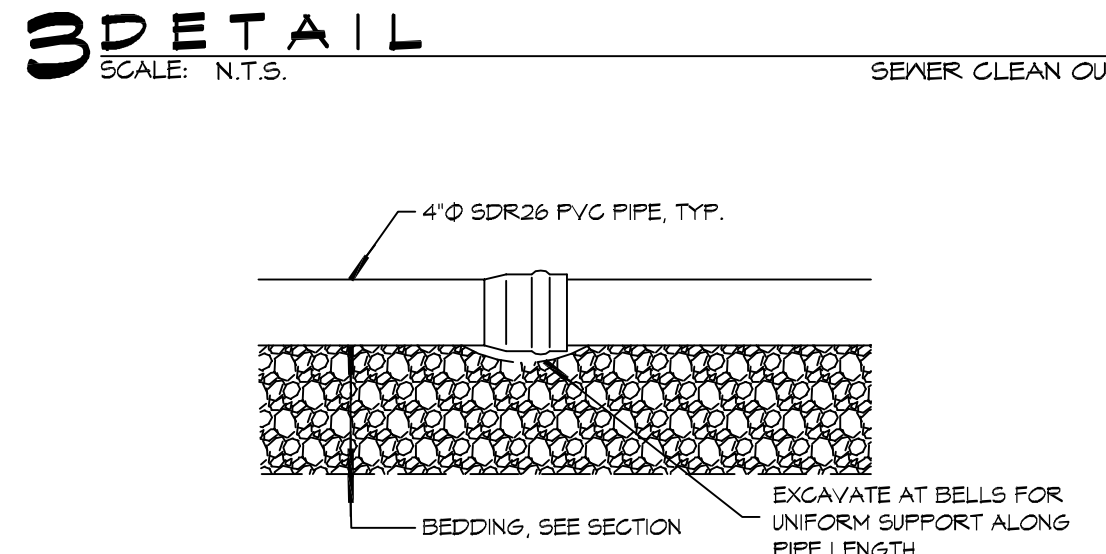
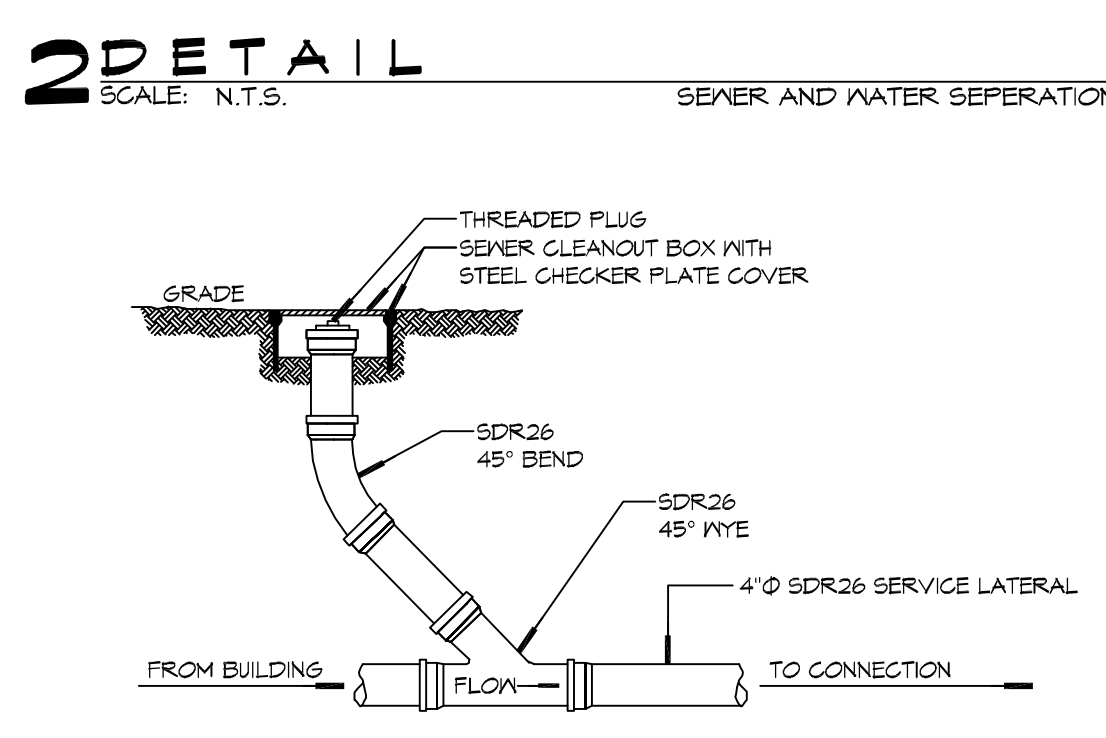
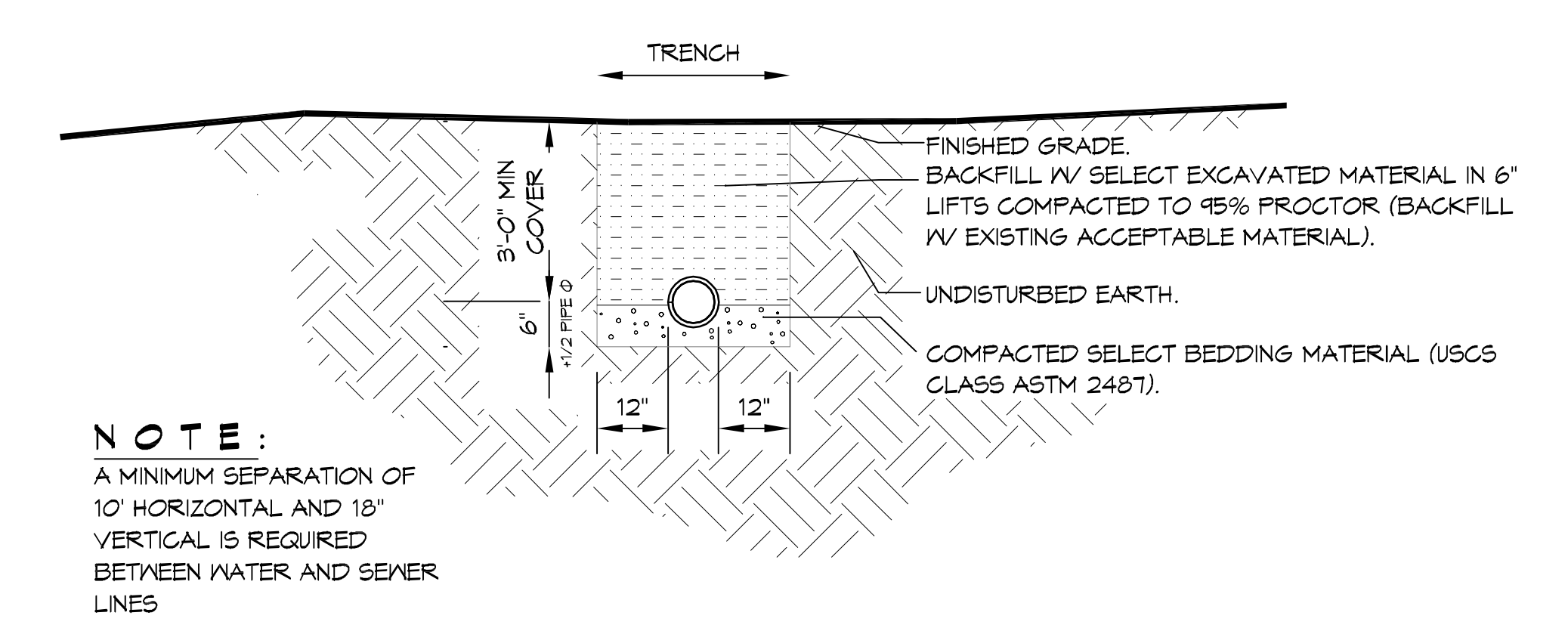


GENERAL SITE NOTES

1. PROVIDE ALL LABOR, MATERIAL AND EQUIPMENT FOR A COMPLETE OPERATING SYSTEM. CONTRACTOR IS TO FIELD VERIFY ALL EXISTING UTILITY LOCATIONS, ELEVATIONS, AND INVERTS PRIOR TO COMMENCING ANY WORK. CONTRACTOR SHALL PAY NECESSARY FEES FOR THE UTILITIES CONNECTIONS.
2. CONTRACTOR TO BE RESPONSIBLE TO VERIFY ANY INVERTS AND SET NEW INVERTS OF SEWAGE AND DRAINAGE PIPES.
3. ALL WORK AND MATERIAL TO COMPLY STRICTLY TO THE LATEST LOCAL CITY PARISH, STATE, AND NATIONAL GOVERNING CODES.
4. SEWAGE LINES 3" AND SMALLER SHALL BE SLOPED 1/4" PER FOOT AND LINES THAT ARE 4" AND LARGER SHALL BE SLOPED 1/8" PER FOOT.
10. CONTRACTOR SHALL CONTACT LOUISIANA ONE CALL PRIOR TO COMMENCEMENT OF SITE EXCAVATION.

SITE UTILITIES LEG
END

- W — NEW WATER LINE
- S — NEW SEWER LINE
- E — NEW ELECTRICAL LINE



DAMMON ENGINEERING, INC.
LOUISIANA & MISSISSIPPI

Chief Engineer: Brian Mistich, PE
554 Old Spanish Trail
Slidell, LA 70468
www.dammonengineering.com
info@dammonengineering.com
PH: 985.469.5852

#	DESCRIPTION	DATE

SEAL:

Brian A. Mistich
Professional Engineer
License No. 30187

NEW RESTAURANT
OLD TOWN PIZZA COMPANY

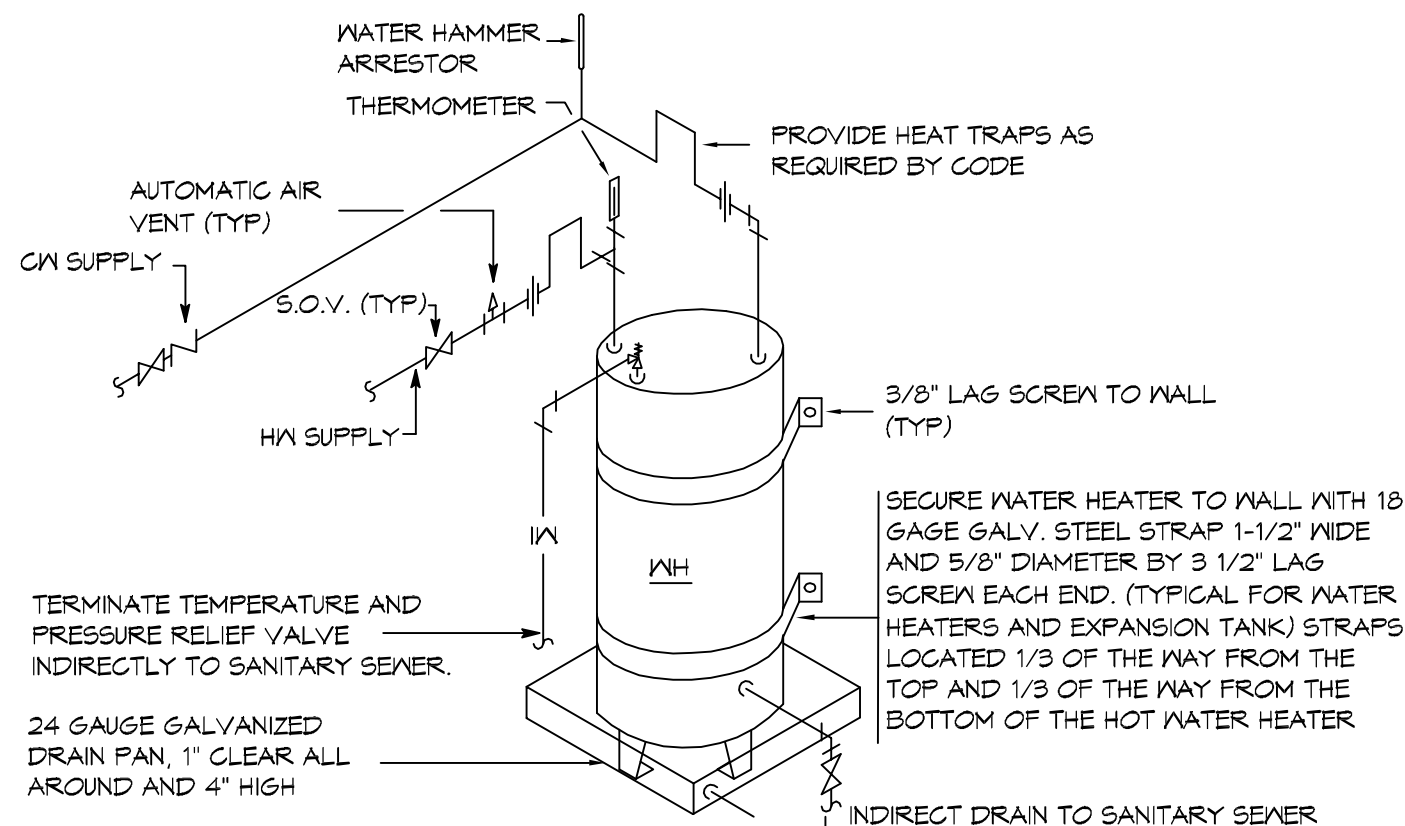
285 COUSIN STREET
SLIDELL, LA 70468

JOB No: 28971 DATE: 11-21-17
DRAWN BY: CKD CHECKED BY: CKD

SHEET TITLE:
SITE UTILITY PLAN

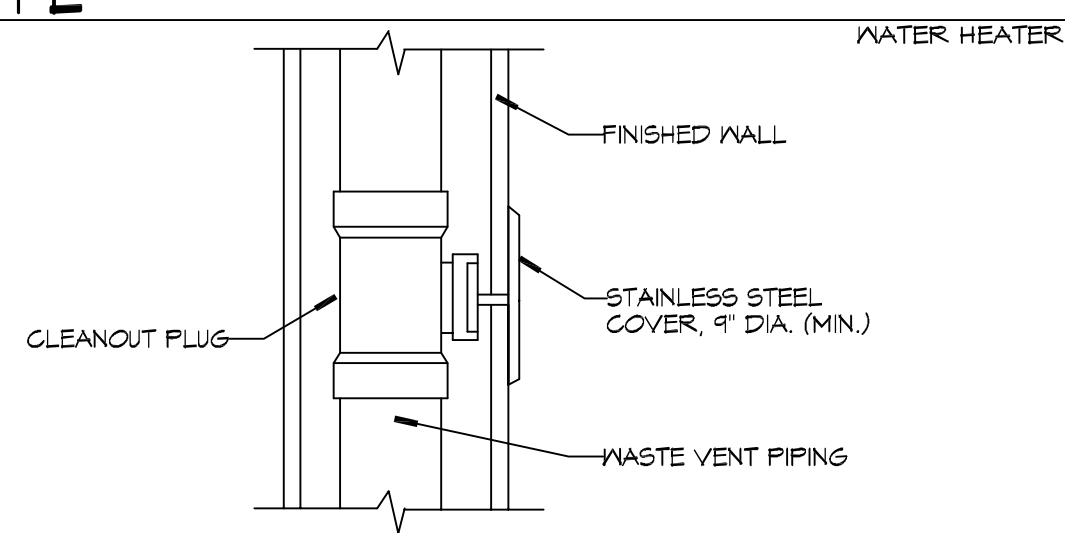
DRAWING NUMBER:
C102

SHEET No: 4 of 9

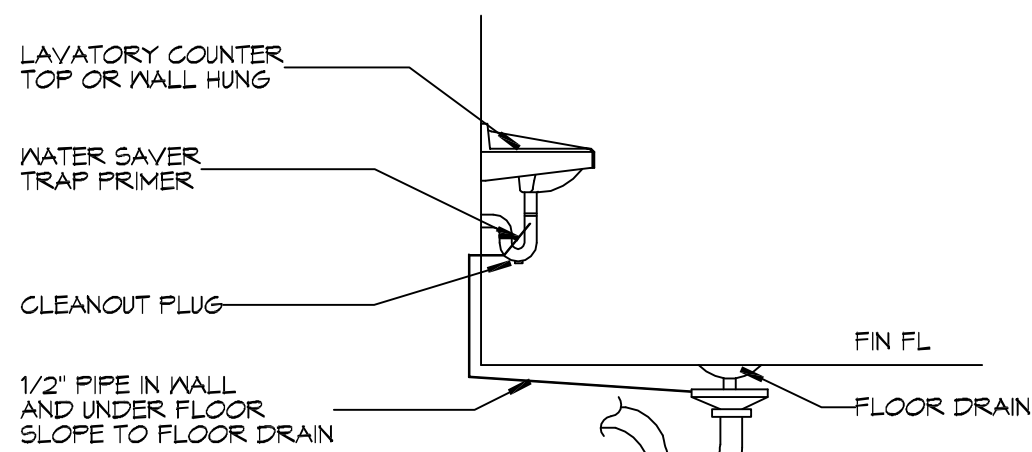


- NOTES:
1. A WATERTIGHT PAN WITH 1" DRAIN SHALL BE PROVIDED UNDER WATER HEATER. DRAIN DIRECTLY OUTSIDE.
 2. WATER HEATER TEMPERATURE TO BE SET AT 140° F. PROVIDE TEMPERING VALVE (SET @ 110° F) FOR ALL HAND SINKS.

4 DETAIL
SCALE: NTS



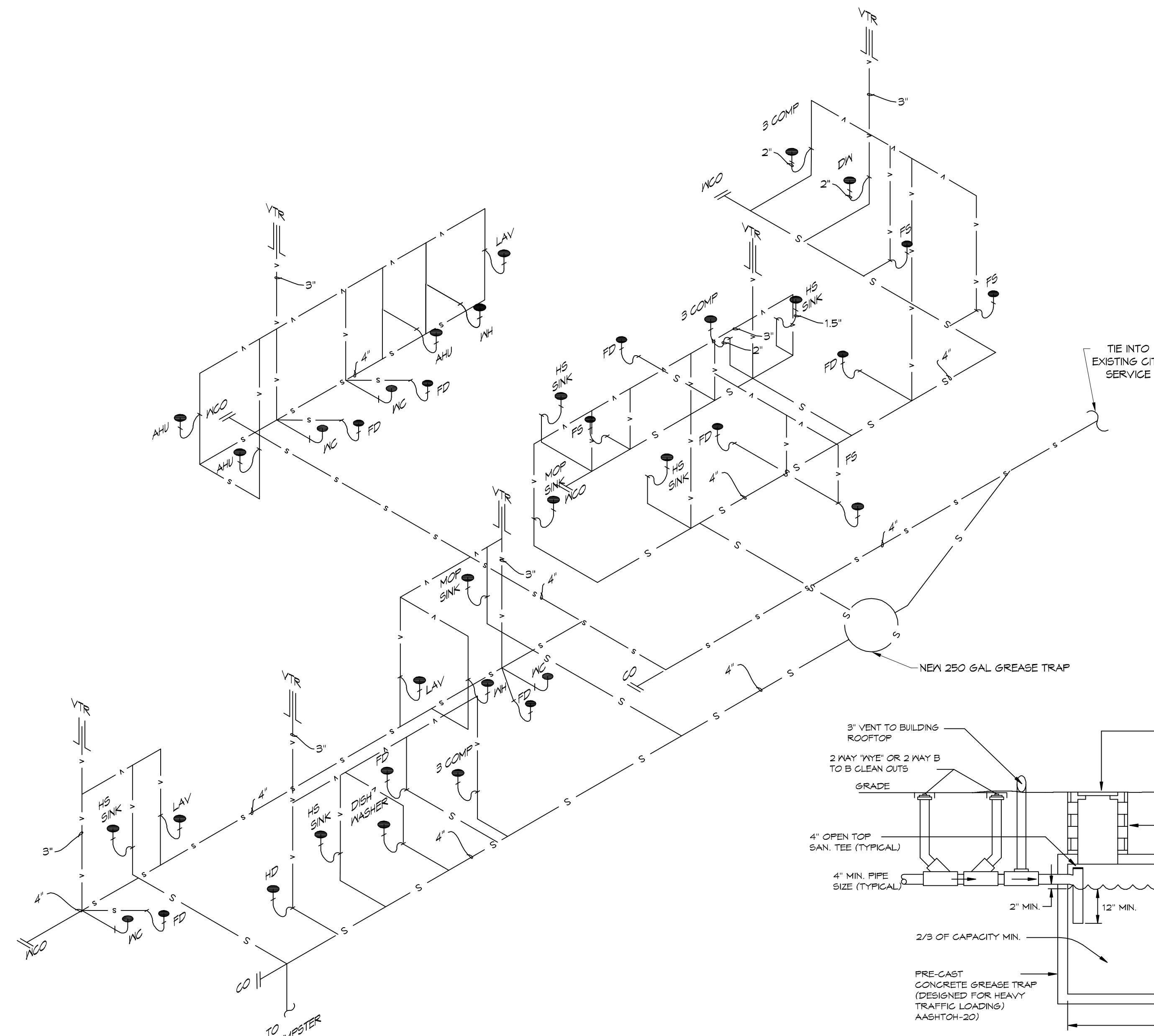
B WALL CLEANOUT



A FLOOR DRAIN

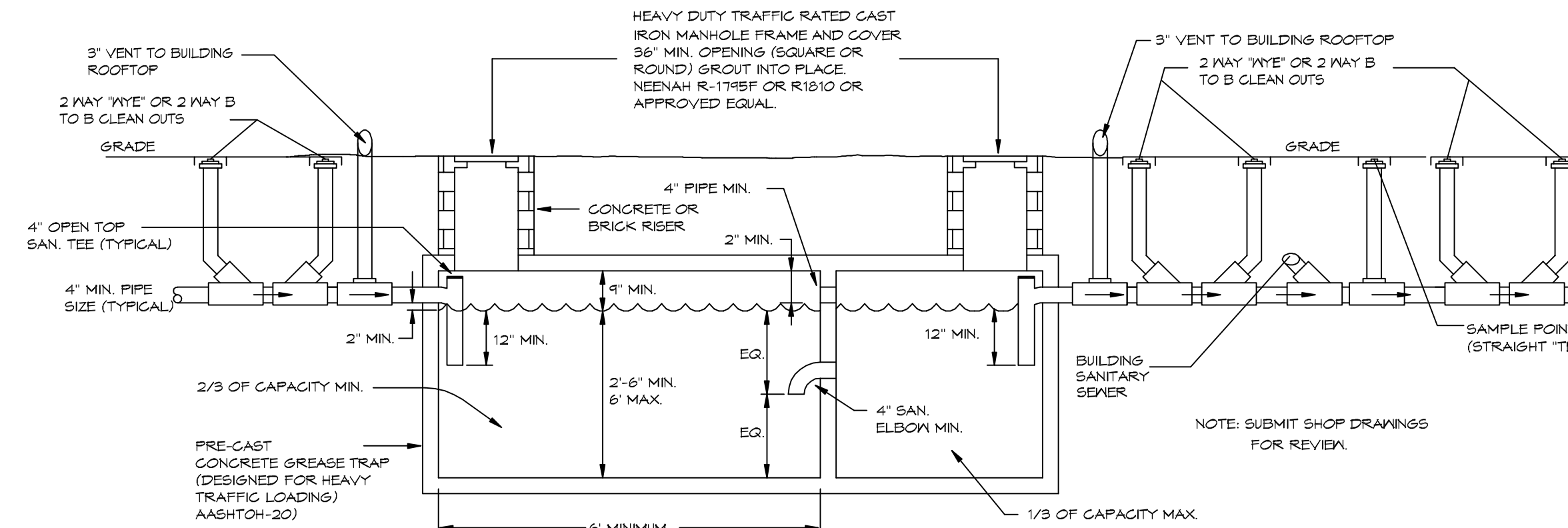
2 TYPICAL DETAILS
SCALE: NTS

MISCELLANEOUS PLUMBING



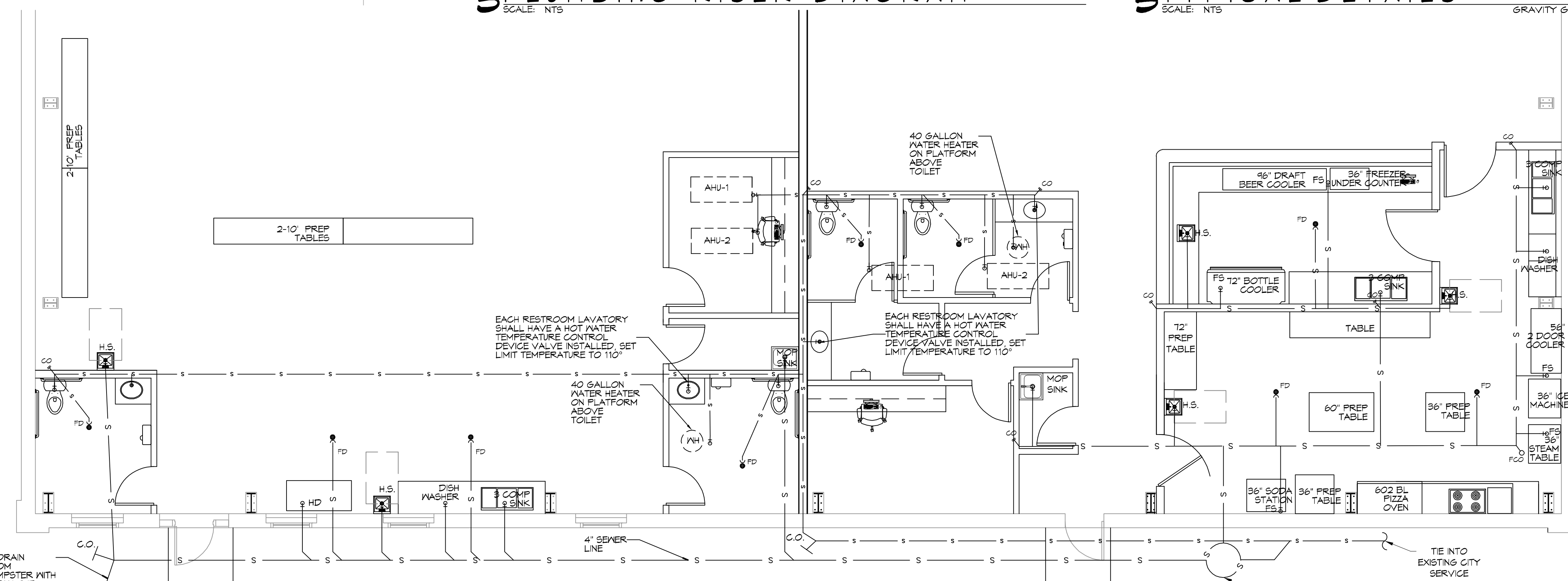
3 PLUMBING RISER DIAGRAM
SCALE: NTS

5 TYPICAL DETAILS
SCALE: NTS



GENERAL PLUMBING NOTES

1. SEE VENDOR DRAWINGS.
2. PLUMBING LINES SHOWN ARE DRAWN DIAGRAMMATIC IN NATURE AND REPRESENT CONCEPTUAL ROUTING ONLY. CONTRACTOR IS RESPONSIBLE FOR FIELD VERIFICATION OF ALL ACTUAL CONDITIONS.
3. PROVIDE ALL LABOR, MATERIAL, TRANSPORTATION, SUPERVISION, CLEAN-UP SERVICES, AND EQUIPMENT FOR A COMPLETE OPERATING SYSTEM. THE SYSTEM SHALL INCLUDE HOT AND COLD WATER PIPING, SEWER AND VENT PIPING, INSULATION, WATER HEATER, HANGERS, VALVES, SUPPORTS WITHOUT ANY RESTRICTIONS TO VOLUME, CUT AND PATCH AS REQUIRED TO INSTALL PIPES.
4. ALL WORK AND MATERIAL SHALL CONFORM STRICTLY TO THE LATEST LOCAL CITY, PARISH, STATE AND NATIONAL GOVERNING CODES. MUST MEET LA STATE PLUMBING CODE 2013 REQUIREMENTS.
5. CONTRACTOR IS TO FIELD VERIFY ALL EXISTING UTILITY LOCATIONS, ELEVATIONS AND SIZES PRIOR TO COMMENCING ANY WORK. CONTRACTOR SHALL PAY NECESSARY FEES FOR THE UTILITIES CONNECTIONS.
6. CONTRACTOR IS RESPONSIBLE TO VERIFY THE EXISTING INVERTS AND SET NEW INVERTS OF SEWERAGE AND DRAINAGE PIPES.
7. SEWERAGE LINES 3-INCH AND SMALLER SHALL BE SLOPED 1/4" PER FOOT AND LINES 4-INCH AND LARGER SHALL BE 1/8" PER FOOT.
8. TEST ALL PIPING AT REQUIRED PRESSURE.
9. ALL PLUMBING SHALL BE CLOSELY COORDINATED WITH STRUCTURAL, MECHANICAL SYSTEM AND ELECTRICAL SYSTEMS TO INSURE NO TRADES WILL CONFLICT WITH EACH OTHER.
10. DO NOT SCALE DRAWINGS. SEE ARCHITECTURAL DRAWINGS FOR EXACT LOCATIONS OF DOORS, WINDOWS, WALLS, FIXTURES, ETC.
11. ALL WATER MAINS AND PIPING NOT SHOWN FOR CLARITY, ALL LOCATIONS FIELD VERIFIED.
12. DOMESTIC HOT AND COLD WATER PIPING AND FITTINGS UNDER SLAB SHALL BE ASTM B88 COPPER WATER TUBE, TYPE K, SOFT ANNEALED. NO JOINTS SHALL BE ALLOWED UNDER THE SLAB.
13. DOMESTIC WATER PIPING AND FITTINGS ABOVE THE SLAB SHALL BE ASTM B88 COPPER WATER TUBE, TYPE L. HARD DRAWN WITH COPPER PRESSURE TYPE FITTINGS, ANSI B16.22. THE JOINTS SHALL BE SOLDERED TYPE USING ASTM B32, ALLOY GRADE 45A (75-5) SOLDER.
14. SOIL, WASTE, VENT PIPING AND FITTINGS ABOVE THE SLAB SHALL BE SERVICE WEIGHT CAST IRON PIPE WITH BELL AND SPIGOT ENDS AND ONE PIECE NEOPRENE INSERT TYPE GASKET. USE PVC SCHEDULE 40 OR ABS DWV PIPES AND FITTINGS WHERE PERMITTED BY CODE.
15. ALL WATER PIPING AND FITTINGS ABOVE THE FLOOR SHALL BE INSULATED WITH 1/2" THICK FIBERGLASS INSULATION AND JACKET.
16. ALL ELECTRICAL, MECHANICAL AND PLUMBING ELEMENTS PENETRATING FIRE PARTITIONS SHALL BE FIRE CAULKED. (PENETRATIONS THROUGH RATED CONSTRUCTION SHALL BE SEALED WITH A MATERIAL CAPABLE OF PREVENTING THE PASSAGE OF FLAMES AND HOT GASES WHEN TESTED IN ACCORDANCE WITH ASTM-E814.)
17. SEE ROOF PLAN FOR PLUMBING ROOF PENETRATIONS. ROUTE VENT PIPES IN ATTIC AS NECESSARY.
18. ALL VENTS THROUGH ROOF (VTR) SHALL BE LOCATED A MINIMUM OF 10'-0" FROM ANY MECHANICAL OR NATURAL AIR INTAKE.



1 PLUMBING PLAN
SCALE: 3/16"=1'-0"

LEGEND

SYMBOL	DESCRIPTION
—S—S—	SANITARY SEWER
—V—V—	VENT PIPE
—FD	FLOOR DRAIN
—CO	LINE CLEAN OUT
—WCO	WALL CLEAN OUT

MINIMUM PLUMBING FIXTURE COUNT

IBC 2012 OCCUPANT LOAD TABLE 1004.1.2

ASSEMBLY WITHOUT FIXED SEATS - UNCONCENTRATED (TABLES AND CHAIRS) - 15 NET	1154 S.F. / 15 = 77
KITCHENS, COMMERCIAL - 200 GROSS	841 S.F. / 200 = 4.5
OFFICE - Business areas - 100 GROSS	164 S.F. / 100 = 1.7
TOTAL OCCUPANCY PER IBC	83.2

IPC 2012 PARA 403.1.1 FIXTURE CALCULATIONS, TO DETERMINE THE OCCUPANT LOAD OF EACH SEX THE TOTAL OCCUPANT LOAD SHALL BE DIVIDED IN HALF. THEREFORE EACH SEX = 41.6

IPC 2012 Table 403.1 - A-2 RESTAURANT - 1 WATER CLOSETS PER 75 OCCUPANTS = 1 MALE AND 1 FEMALE.

MINIMUM SIZE GREASE TRAP

AMENDMENT PART 1 TO IPC 2012, SECTION 1009.3.5

A. THE MINIMUM CAPACITY FOR APPLICATIONS WITHOUT A GARBAGE GRINDER SHALL NOT BE LESS THAN 125 GALLONS BELOW THE STATIC WATER LEVEL. ...WHEN OVER 50 PEOPLE ARE SERVED DURING A SINGLE MEAL PERIOD, THE MINIMUM CAPACITY SHALL BE INCREASED BEYOND 125 GALLONS BASED UPON AT LEAST AN ADDITIONAL 2 1/2 GALLONS PER PERSON BEGINNING WITH THE 51ST PERSON SERVED AND GREATER.

NUMBER OF OCCUPANTS	77
MINIMUM SIZE GREASE TRAP	125 + (2.5 X 27) = 192.5 GAL = 250 GAL; GRAVITY OR HYDROMECHANICAL WITH A FLOW RATE OF 100 GPM.

DAMMON ENGINEERING, INC.
LOUISIANA & MISSISSIPPI

www.dammonengineering.com
info@dammonengineering.com
PH: 985.649.9832

Chief Engineer: Brian Mistich, PE
554 Old Spanish Trail
Slidell, LA 70688

REVISIONS

#	DESCRIPTION	DATE
1	REVISED PLUMBING DIAGRAM	11-13-15

SEAL:

STATE OF LOUISIANA
BRIAN A. MISTICH
License No. 30187
Professional Engineer

NEW RESTAURANT
PIZZA
OLD TOWN
COUNTRY

285 COUSIN STREET
SLIDELL, LA 70459

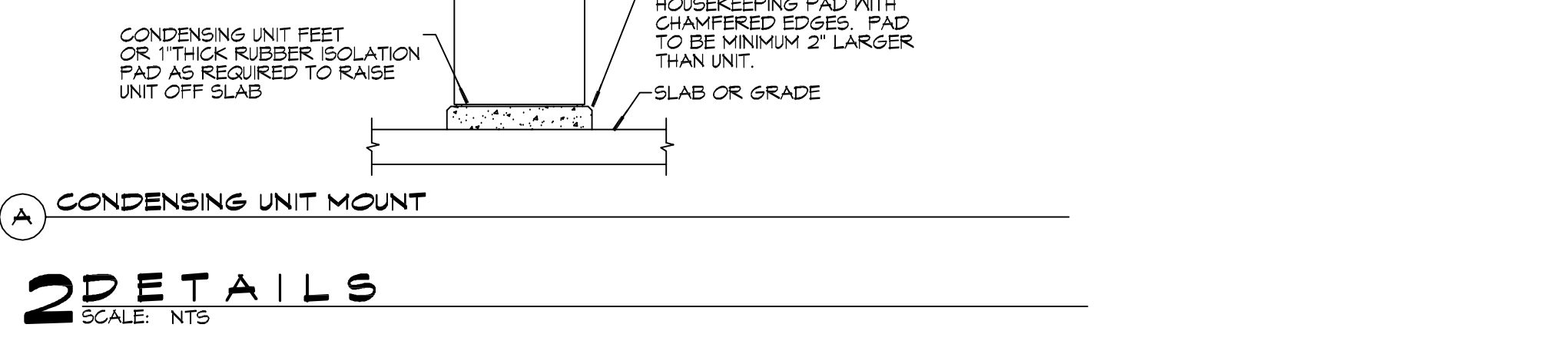
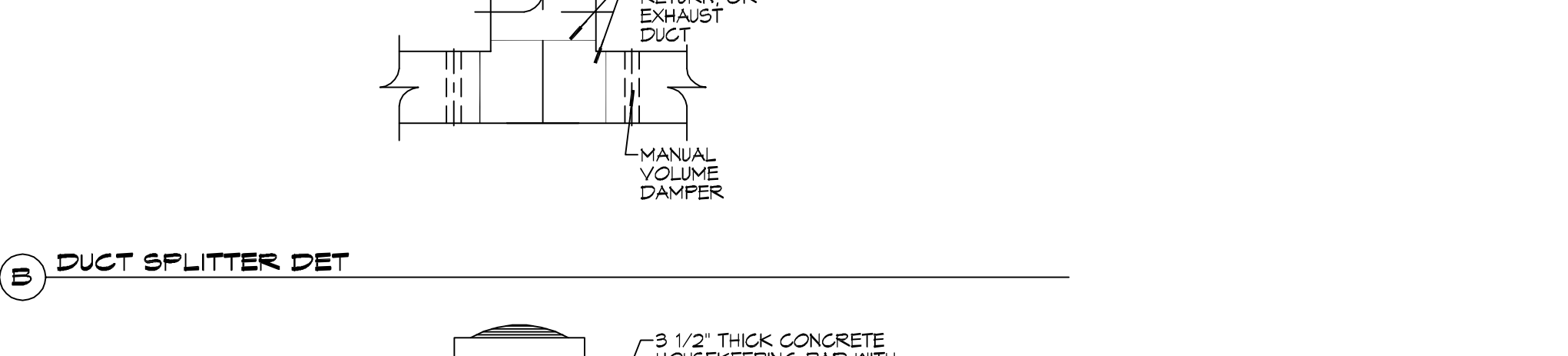
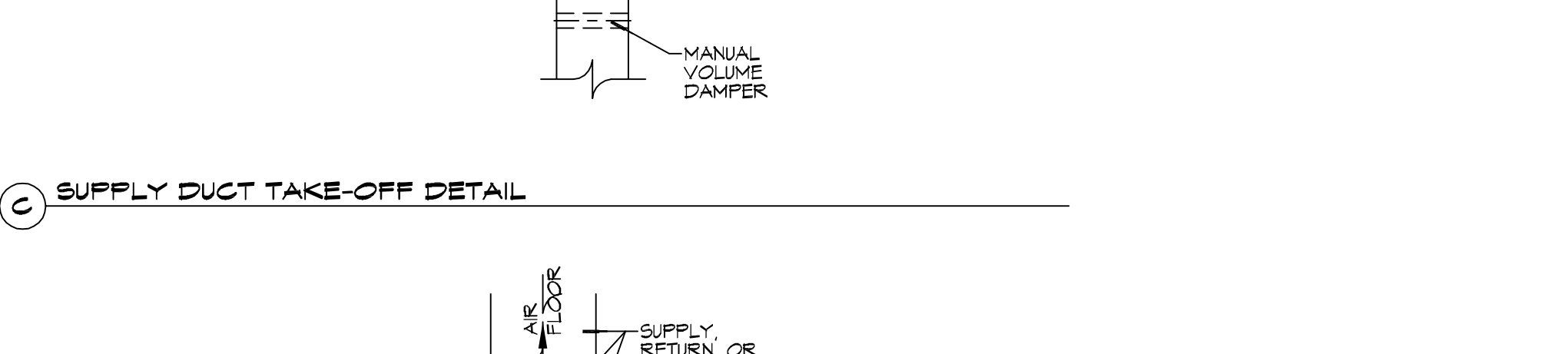
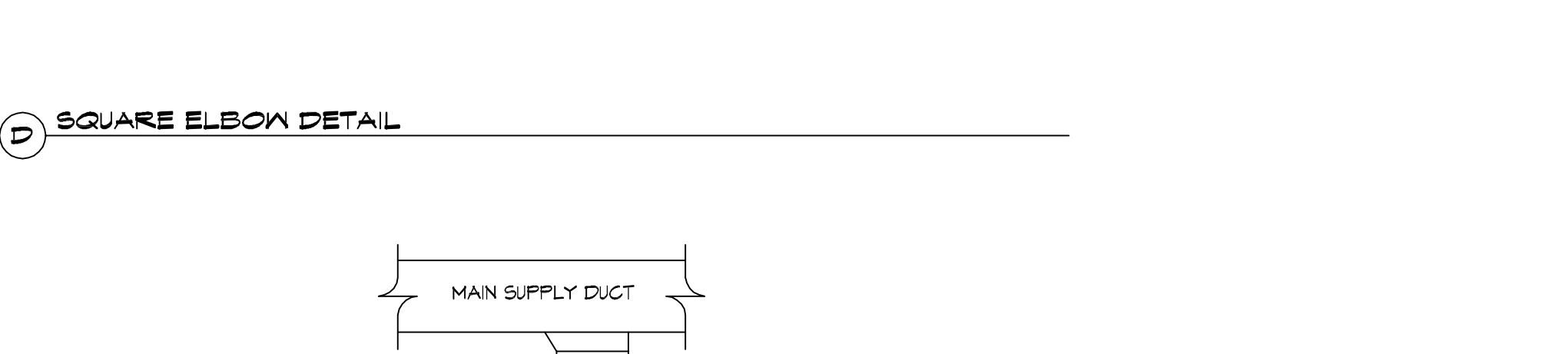
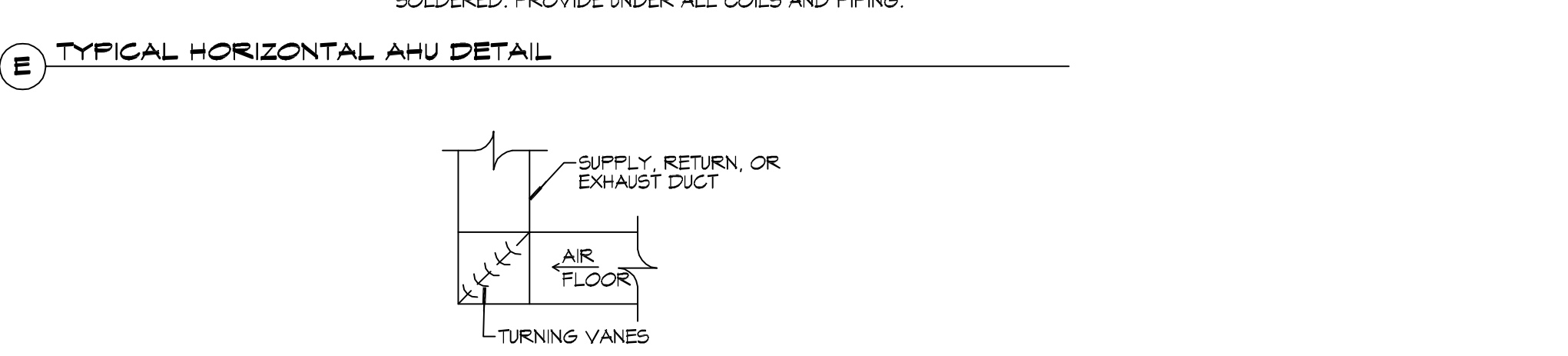
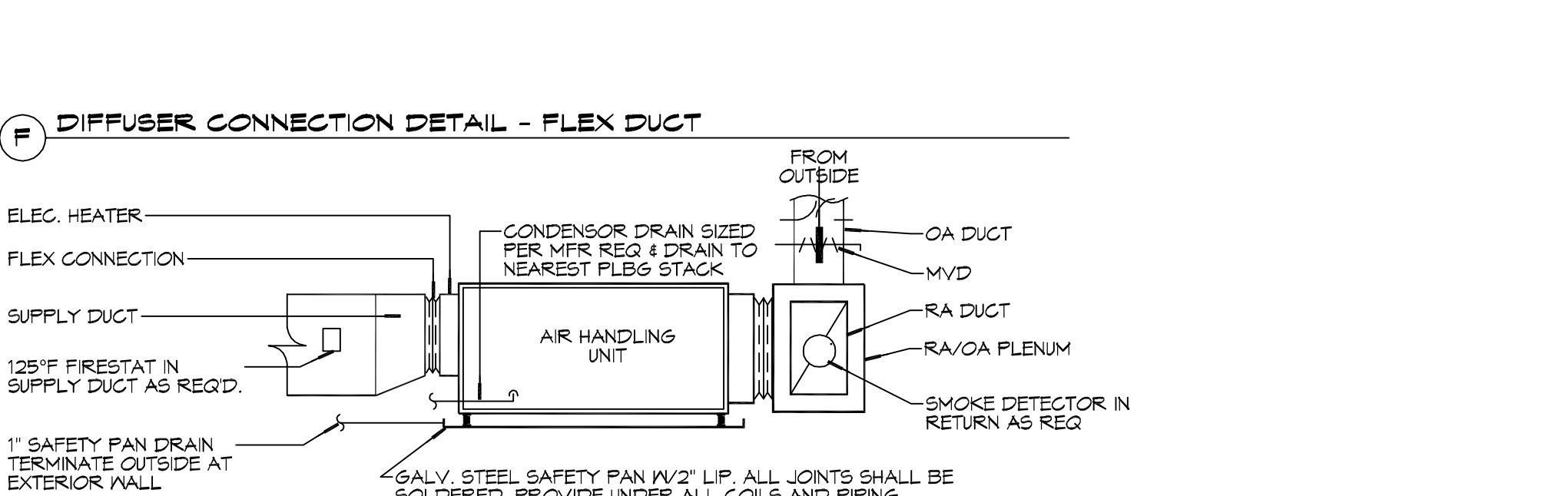
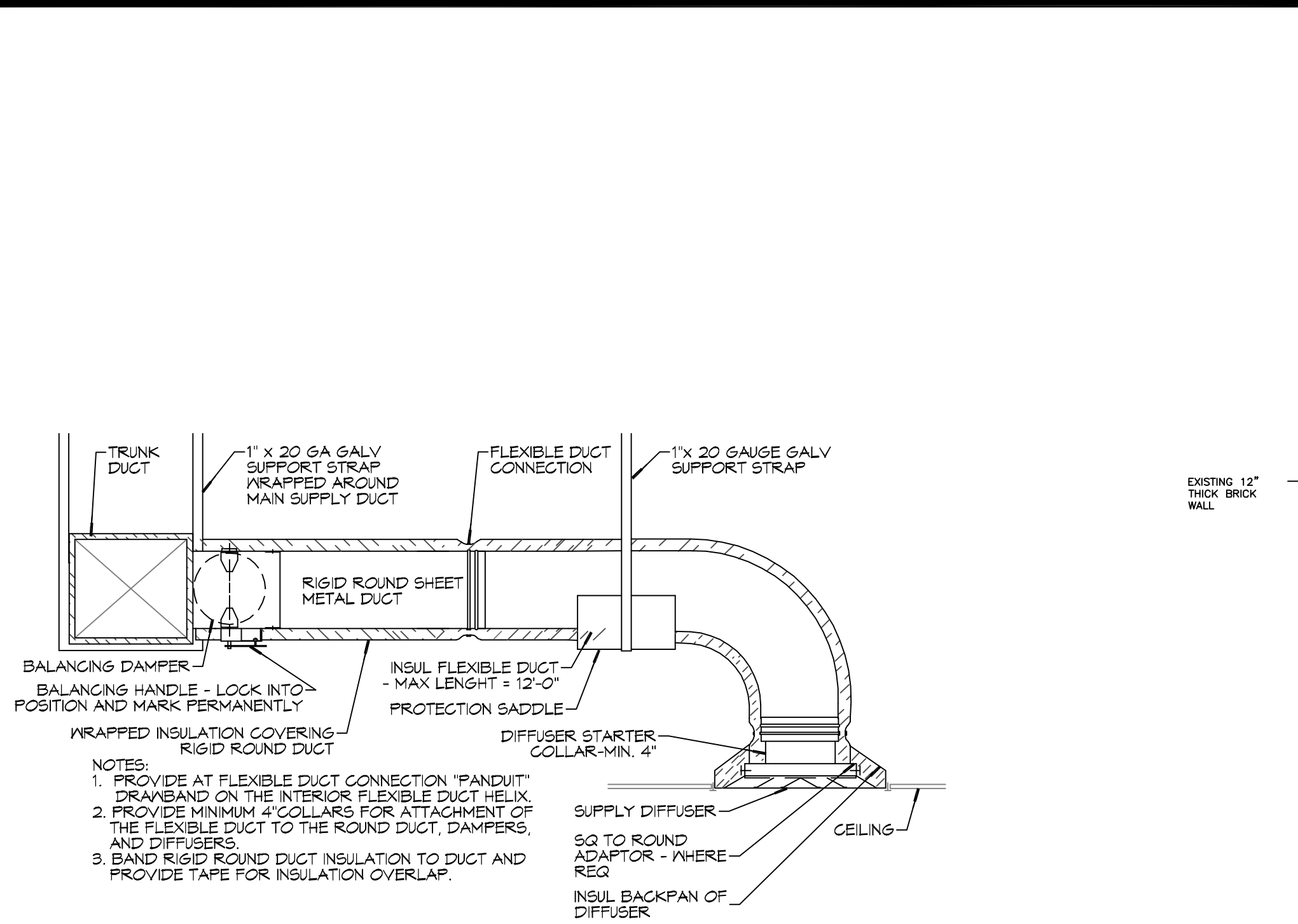
JOB No: 2831 DATE: 11-21-15
DRAWN BY: CKD CHECKED BY: CKD

SHEET TITLE:
PLUMBING PLAN AND
PLUMBING RISER DIAGRAM

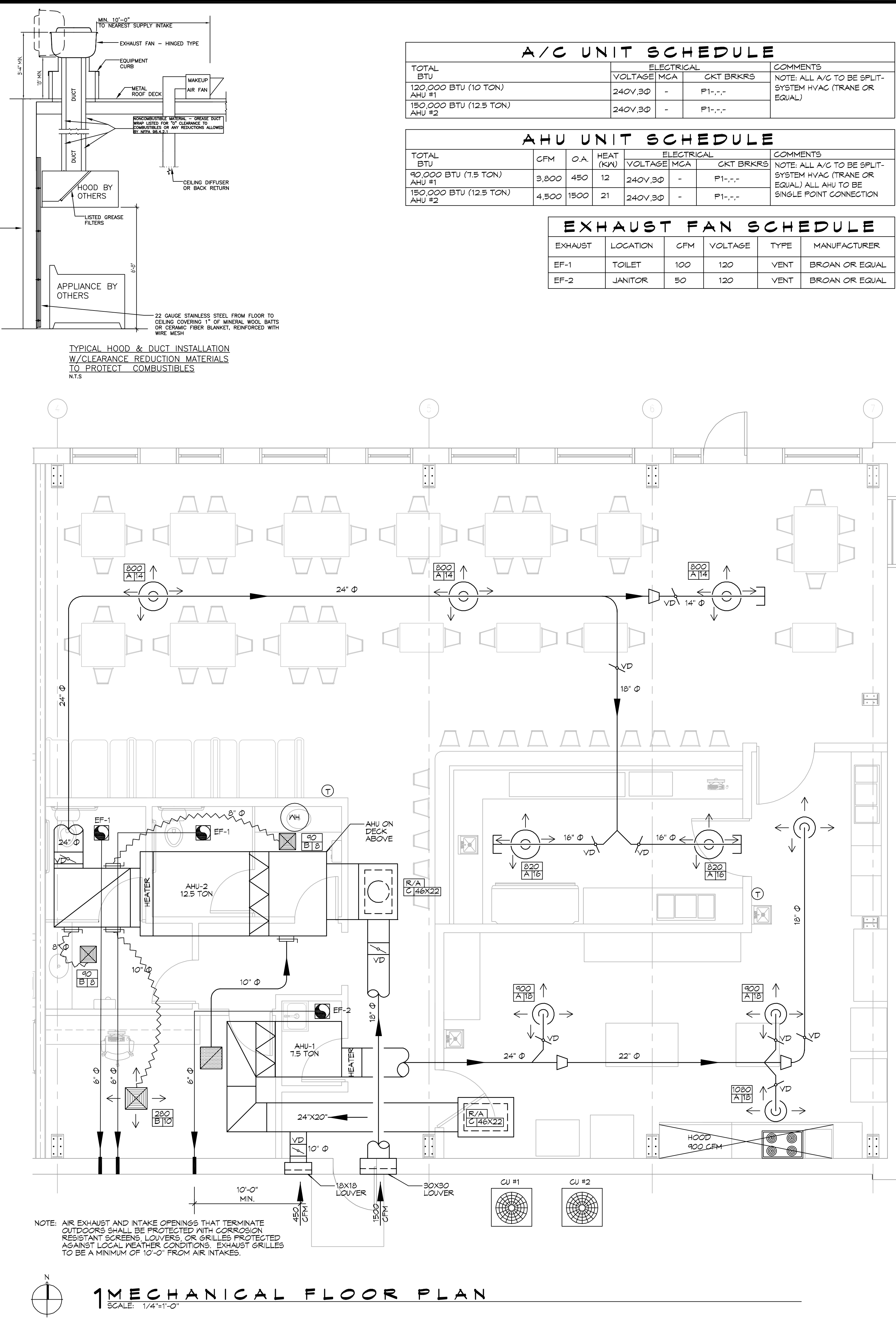
DRAWING NUMBER:
P101

SHEET No: 6 of 9

FILE NAME: J:\PROJECTS\2023\11-21-23\23-001\23-001-001\23-001-001-001.dwg
 PLOT DATE: 11/21/23 10:58 AM
 PLOT BY: B. MISTICH
 PROJECT: NEW RESTAURANT
 SHEET: MECHANICAL FLOOR PLAN, SCHEDULES AND DETAILS
 SCALE: 1/4"=1'-0"



2 DETAILS
 SCALE: NTS



1 MECHANICAL FLOOR PLAN
 SCALE: 1/4"=1'-0"

A/C UNIT SCHEDULE			
TOTAL BTU	ELECTRICAL VOLTAGE	MCA	CKT BRKRS
120,000 BTU (10 TON) AHU #1	240V.3Ø	-	P1-...-
150,000 BTU (12.5 TON) AHU #2	240V.3Ø	-	P1-...-

AHU UNIT SCHEDULE			
TOTAL BTU	CFM	O.A.	HEAT (KW)
90,000 BTU (7.5 TON) AHU #1	3,800	450	12
150,000 BTU (12.5 TON) AHU #2	4,500	1500	21

EXHAUST FAN SCHEDULE					
EXHAUST	LOCATION	CFM	VOLTAGE	TYPE	MANUFACTURER
EF-1	TOILET	100	120	VENT	BROAN OR EQUAL
EF-2	JANITOR	50	120	VENT	BROAN OR EQUAL

GENERAL HVAC NOTES

- CONCEALED DUCTWORK TO BE GALVANIZED SHEET METAL LINED WITH FIBROUS GLASS DUCT LINER, MIN R-6. INSTALLED PER SMACNA STANDARDS.
- EXPOSED DUCTWORK TO BE GALVANIZED SHEET METAL LINED WITH FIBROUS GLASS DUCT LINER, MIN R-6. INSTALLED PER SMACNA STANDARDS.
- ROUND FLEXIBLE DUCT TO BE UL-181, CLASS 1, AIR DUCT MATERIALS. DUCT SIZES SHOWN ARE CLEAR INSIDE DIMENSIONS.
- IN ALL SYSTEMS OVER 2000 CFM AND LESS THAN 15,000 CFM, SMOKE DETECTORS SHALL BE INSTALLED IN ACCORDANCE WITH NFPA 72E IN THE RETURN DUCT DOWNSTREAM OF THE AIR HANDLING UNIT AND ALL FILTERS TO AUTOMATICALLY STOP THE FAN.
- PROVIDE UL LISTED 125°F FIRESTAT IN RETURN AIR OF EACH SYSTEM UNDER 2000 CFM TO SHUT DOWN THE FAN IN THE EVENT OF FIRE.
- PROVIDE UL RATED FIRE DAMPERS WHERE REQUIRED AT ALL DUCT PENETRATIONS OF FIRE-RATED ASSEMBLIES AND WHERE REQUIRED BY CODE, INCLUDING OUTSIDE AIR INTAKES AND EXHAUST FANS.
- CONDENSATE DRAINS TO BE PVC PIPE RUN TO PLUMBERS P-TRAP WITHIN FIVE FEET OF AIR HANDLING UNITS.
- ALL AIR HANDLING SYSTEMS TO BE BALANCED TO ASSURE PROPER AIR FLOWS PER PLANS.
- ALL THERMOSTATS TO BE AUTOMATIC CHANGEOVER WITH HEAT SWITCH.
- EXHAUST FAN SHALL BE CONTROLLED BY A SWITCH ON THE WALL IN THE SAME LOCATION AS LIGHT SWITCH(S). PROVIDE BACK DRAFT DAMPER.
- PROVIDE AND INSTALL WATER PROOF GRILLE VENT IN PROPER ROOF LOCATION FOR PLUMBING FIXTURE EXHAUST.
- ALL SUPPLY AIR VENTS SHALL BE EQUIPPED WITH AIR CONTROL DAMPERS AT THE REGISTER.
- LOCATE OUTDOOR UNITS AS SHOWN ON ARCHITECTURAL DRAWINGS.
- REFRIGERANT LINES SHALL BE SIZED BY UNIT MANUFACTURER AND INSTALLED ACCORDING TO MANUFACTURER'S INSTRUCTIONS.
- FRESH AIR SHALL BE SUPPLIED TO EACH AIR HANDLER THROUGH EXTERIOR WALL DUCT SUPPLIED WITH A CONTROL DAMPER.
- ALL ELECTRICAL, MECHANICAL, AND PLUMBING PENETRATING FIRE WALLS SHALL BE FIRE CAULKED. (PENETRATIONS THROUGH RATED CONSTRUCTION SHALL BE SEALED WITH A MATERIAL CAPABLE OF PREVENTING THE PASSAGE OF FLAMES AND HOT GASES WHEN TESTED IN ACCORDANCE WITH ASTM-E814).
- ALL MECHANICAL SYMBOLS ARE DRAWN DIAGRAMMATICALLY. CONTRACTOR TO VERIFY WITH OWNER LOCATIONS OF VENTS, DAMPERS, REGISTERS, ETC.
- FLEXIBLE DUCTWORK LENGTH NOT TO EXCEED 12'-0".
- REFER TO REFLECTED CEILING PLAN FOR FINAL GRILLE AND DIFFUSER LOCATIONS AND COORDINATE AS REQUIRED.
- FINAL LOCATION OF TEMPERATURE CONTROLS TO BE COORDINATED WITH OWNER AT JOB SITE.
- PROVIDE AND INSTALL SMOKE DETECTORS AS APPROVED BY LOCAL A.H.J.S. PLACE NEAR R/A AND S/A OPENINGS OF AHU AND PROVIDE, WITH ACCESS PANEL, WIRING BY ELECTRICAL CONTRACTOR.
- FRESH AIR INTAKES ARE REQUIRED TO HAVE MOTORIZED OR GRAVITY DAMPERS TO SHUT OFF WHEN SYSTEM IS NOT RUNNING.
- PROVIDE BIRD SCREENS AT ALL EXTERIOR MECHANICAL PENETRATIONS.
- COORDINATE WALL MOUNTED THERMOSTAT LOCATIONS WITH ALL OWNER FURNISHED ITEMS EITHER WALL MOUNTED OR FLOOR MOUNTED AGAINST PARTITIONS. REFER TO ARCHITECTURAL DRAWINGS.
- SEE ROOF PLAN FOR ALL ROOF PENETRATIONS.
- PROVIDE MIN 18 GA GALVANIZED SHEET METAL TO BLANK-OFF GABLE VENTS WHERE INTAKE/EXHAUST DUCTS OCCUR.



NEW RESTAURANT
 OLD TOWN
 PIZZA COMPANY

LEGEND

- SUPPLY AIR GRILLE
- RETURN AIR GRILLE
- EXHAUST FAN
- THERMOSTAT
- SUPPLY AIR DUCT
- RETURN AIR DUCT
- DAMPER CONTROL
- ROUND FLEX DUCT, MAX LENGTH 12'-0", MIN R-6. PROVIDE MAN. DAMPER AT DIFFUSER CONNECTIONS, DUCT SIZE AS FOLLOWS:
250 CFM TO 350 CFM = 9"
300 CFM TO 250 CFM = 8"
150 CFM TO 300 CFM = 7"
100 CFM TO 150 CFM = 6"

SHEET TITLE:
 MECHANICAL FLOOR PLAN,
 SCHEDULES AND DETAILS

DRAWING NUMBER:
M101

SHEET No: 7 of 9

DAMMON
 ENGINEERING, INC.
 LOUISIANA & MISSISSIPPI
 Chief Engineer: Brian Mistich, PE
 554 Old Spanish Trail
 Slidell, LA 70688
 www.dammonengineering.com
 info@dammonengineering.com
 PH: 985.649.9832

#	DESCRIPTION	DATE

SEAL:
 STATE OF LOUISIANA
 BRIAN A. MISTICH
 License No. 30187
 PROFESSIONAL ENGINEER

JOB No: 2301
 DATE: 11-21-23
 DRAWN BY: CCK
 CHECKED BY: CCK

