

F.A.P.	STATE PROJECT	PARISH	SHEET NO.

**NOTES:**

**GENERAL**

- All signs and pavement markings herein shall be in accordance with the current edition of the "Louisiana Manual on Uniform Traffic Control Devices."
- No traffic controls shall be erected until construction work is about to begin and with the authorization of the Project Engineer.
- Responsibility is hereby placed upon the contractor for the erection and maintenance of all markings, signs and barricades called for in these plans or required by the Project Engineer for the protection of the traveling public or construction personnel. The contractor shall also be responsible for the maintenance or refurbishing, if necessary, of all permanent signs and pavement markings that should be left in place as essential to the safe movement and guidance of traffic within the limits of the project.
- All retroreflective devices such as signs, drums, barricades, vertical panels, delineators of any type, etc., shall be cleaned or washed periodically, to maintain their effectiveness, as required by conditions of the Project Engineer.
- Where a construction project involves a number of road segments remote from each other, only those segments where actual work is in progress shall be signed. Upon completion of any segment, construction signing shall be removed and replaced with permanent signing.
- When different projects are next to each other, or separated by less than one mile, they shall be considered as one project for construction signing purposes, and all advance signing at the juncture shall be eliminated, except for any signing that the Project Engineer might require due to site conditions.
- Signs shown in all illustrations are typical and may vary with each specific condition. Other signs from sheet one (1) more appropriate for the specific condition may be substituted in any of the above illustrations upon approval by the Project Engineer. However, the required number of such signs shall in general be constant.
- Taper Length (L) Formula  
 $L = S \times W$  for speed limit  $\geq 45$  MPH  
 $L = \frac{W^2}{80}$  for speed limit  $< 40$  MPH  
 where:  
 L = minimum length of taper  
 S = numerical value of posted speed limit prior to work or 85th percentile speed  
 W = width of offset
- Spacing of channelizing devices such as cones, puffers, drums, and Type I or II barricades shall not exceed a distance in feet equal to the speed limit when used for taper channelization and a distance in feet of twice the speed limit when used for tangent channelization.

**PAVEMENT MARKINGS**

All pavement markings at either end of or within the limits of the project that are in conflict with the project signing or the required traffic movements shall be removed from the pavement by abrasion. If, in the opinion of the project engineer, special pavement markings are needed as a traffic control, or in channelization or width transitions, they shall be retrofitted, removable, temporary lane marking tape and should be accompanied by proper signs. Typical illustrations are shown in the "Louisiana Manual of Uniform Traffic Control Devices."

**SIGN MATERIALS**

The backing material used in the fabrication and erection of construction signs shall be in accordance with Subsection 1015.04(b) of the Standard Specifications as revised by project specifications. Signs shall normally be mounted on two posts, except speed limit signs, chevrons and other similar signs, which shall be mounted on one post. A minimum of two bolts per post shall be used.

Retroreflectorization of signs and barricades shall be by means of materials that conform to the requirements of Subsection 1015.05(a) of the Standard Specifications as revised by project specifications. If support posts should be spiked, the spike should be no higher than 15" above the ground.

All materials and their application shall meet Department Specifications.

**REMOVAL OF SIGNS**

All signs shall be removed when the operation is not in progress, or where the hazard has been removed. On part-time operations, signs such as "Truck Crossing", "Men Working", etc., shall be removed or set aside out of view of traffic when the operation is not in progress. When construction operations change, signing must change accordingly; all conflicting signs from previous operations must be removed or covered as new signs are erected.

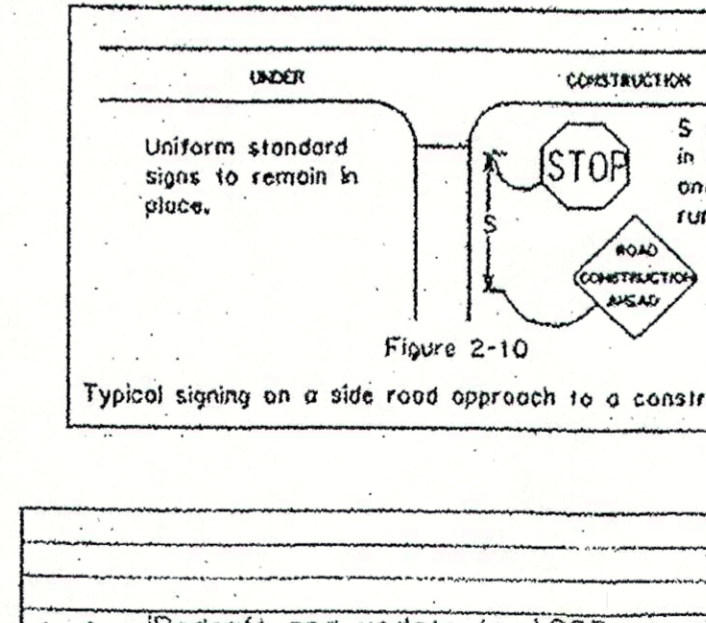
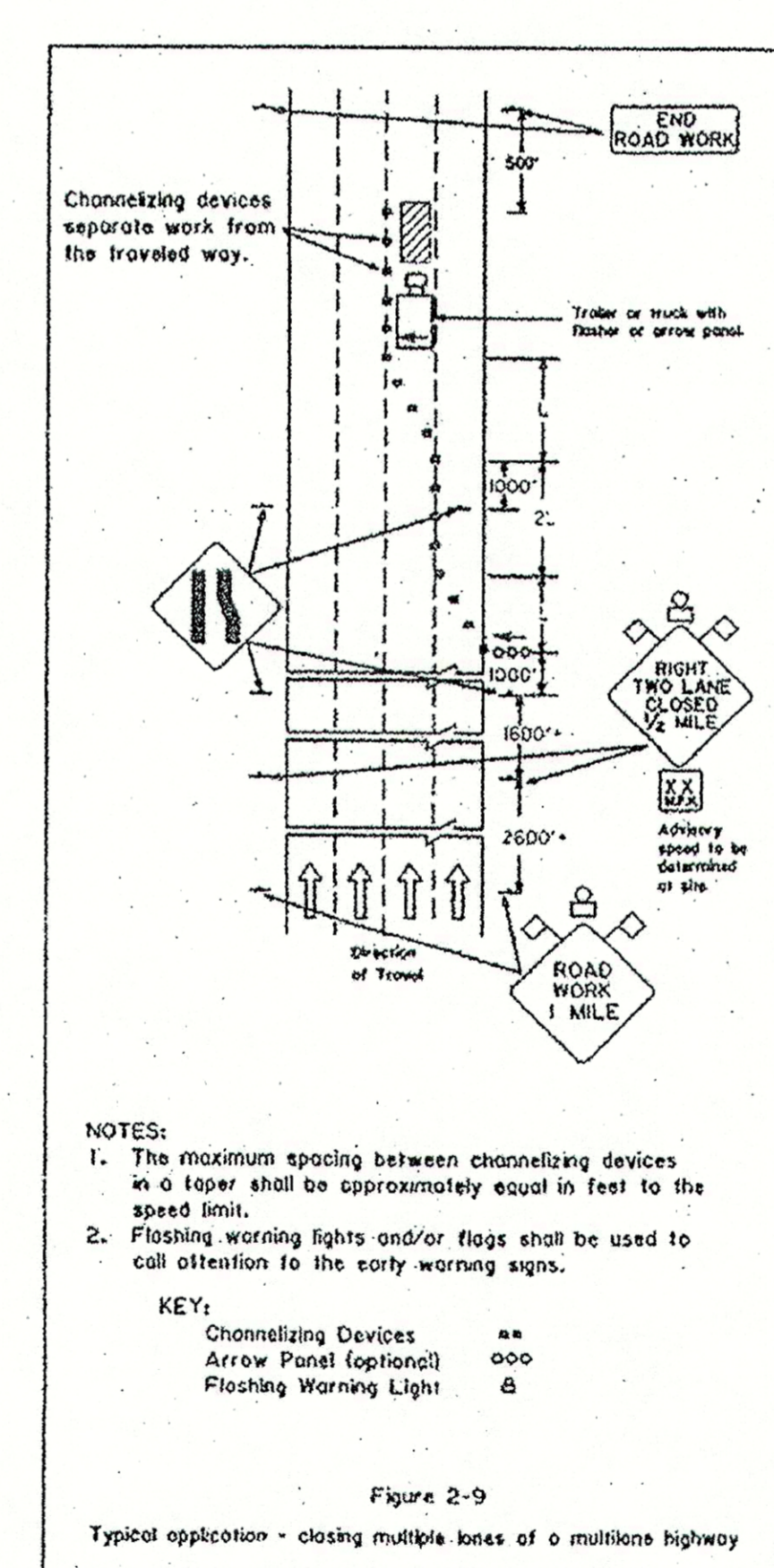
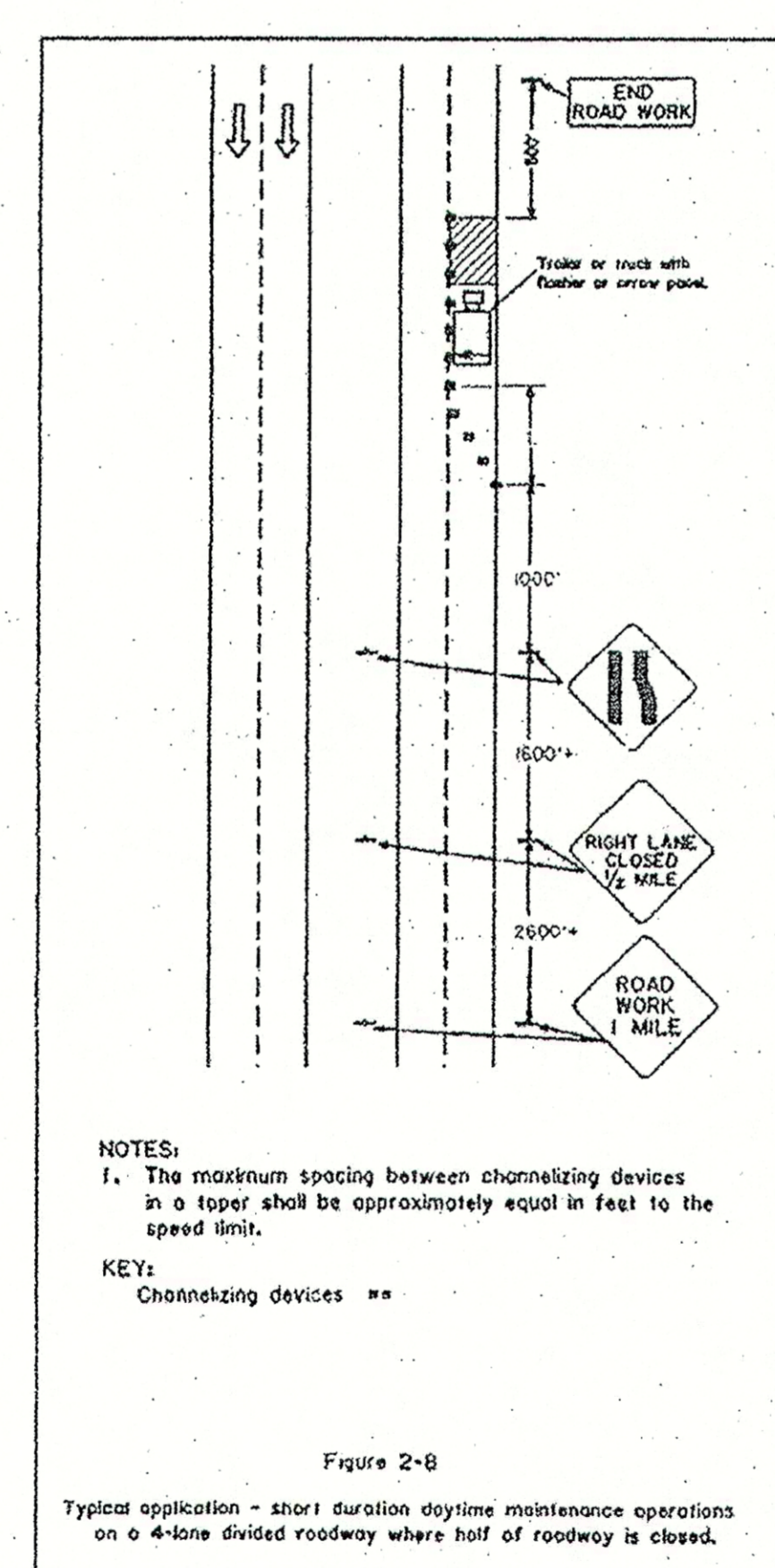
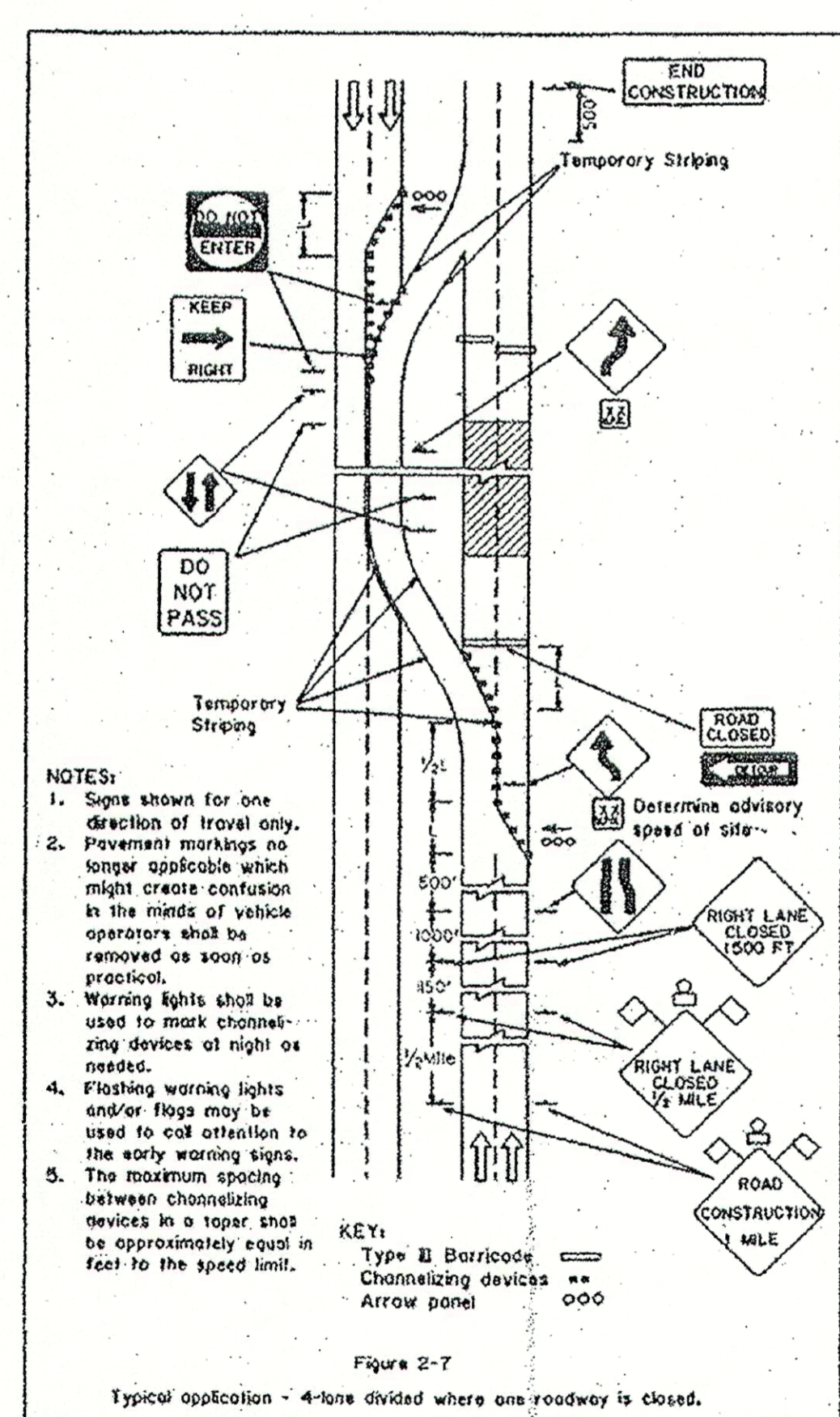
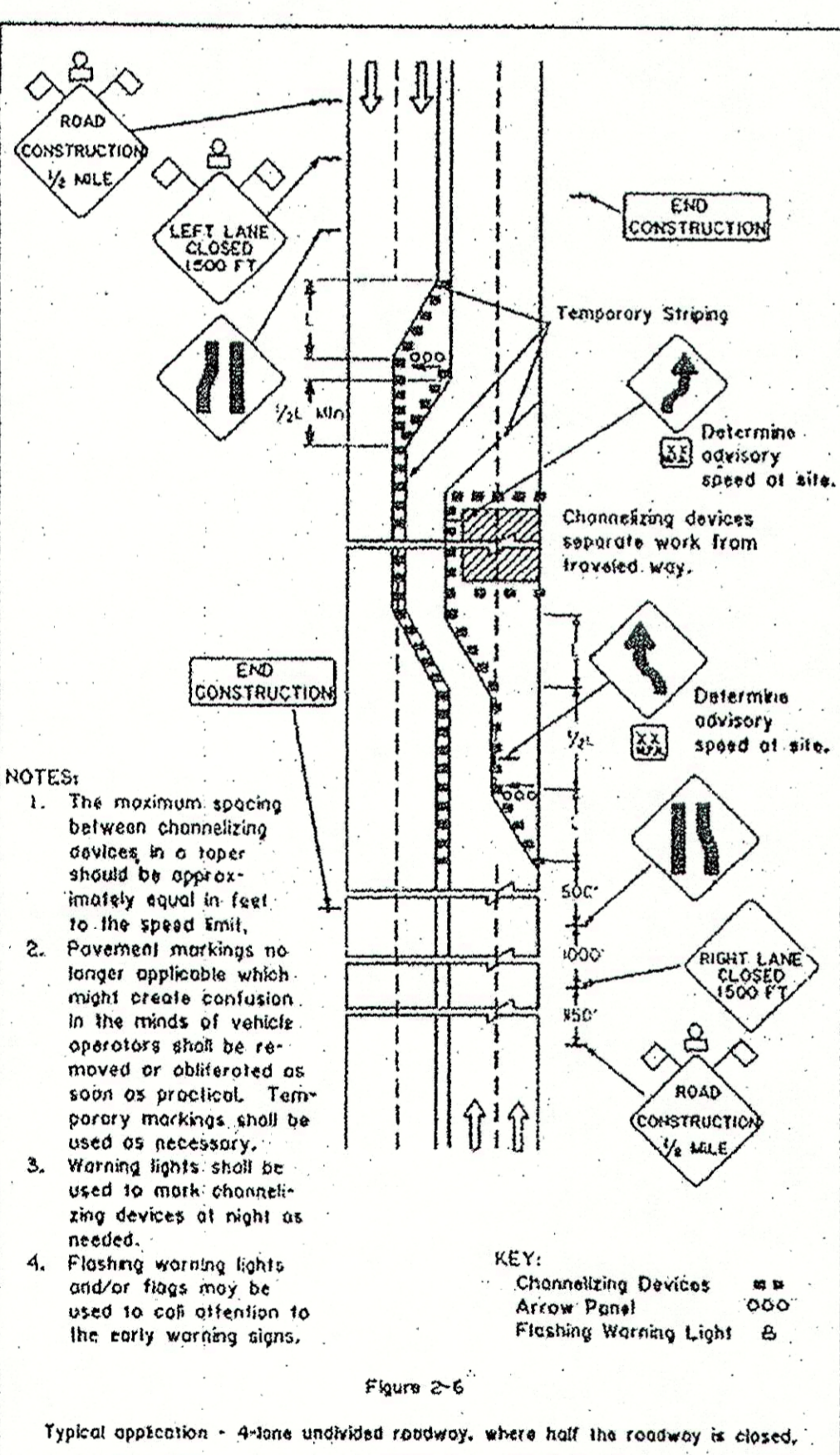
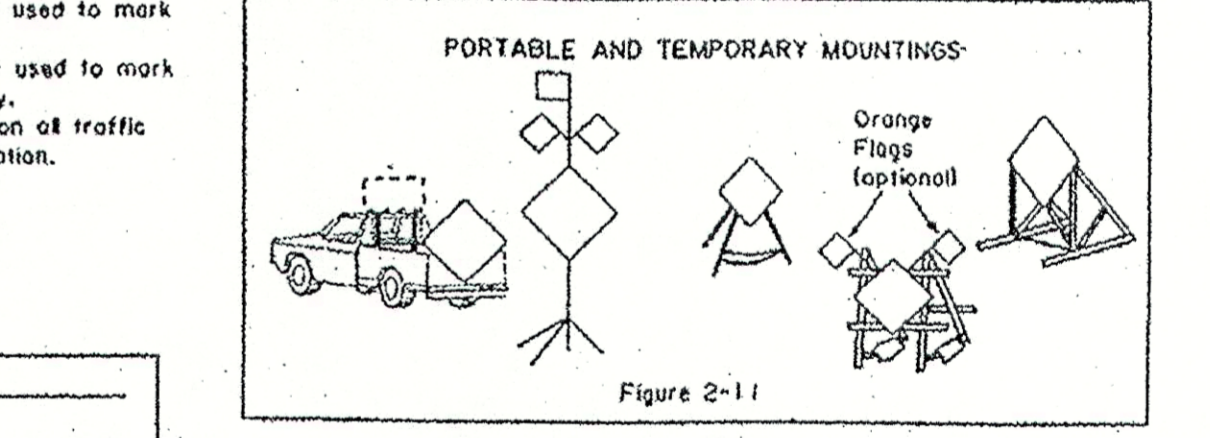
**COVERING OF SIGNS**

Signs shall be covered with a strong, lightweight, completely opaque material, shaped or formed so as to cover all of the legend on the face of the sign. The covering shall be securely fastened so as to prevent its accidental removal by wind or other cause. The covering material shall be non-reflective and of a neutral shade, or black. Burlap cloth, cardboard, or paper are not acceptable materials. Signs that might obscure other construction signs shall be removed not covered.

**LIGHTING**

Lighting shall supplement of barricades that close one or more lanes or that extend across a highway. At least two high intensity lights will be used but, where the travelway ends immediately after a barricade, a minimum of four lights shall be used. Lighting shall be by approved electrical installations. Where battery operated equipment is used, it shall conform to specifications for high or low intensity, flashing or steady burning lights as set forth in subsection 1018.12 of the Standard Specifications.

- High intensity flashing lights shall be used to mark the first advance warning sign.
- Low intensity flashing lights shall be used to mark off other hazards off the travel way.
- Steady burning lights shall be used on all traffic control devices used for channelization.



STANDARD PLAN NO.	HS-01	2 OF 3
<b>STANDARD PLAN</b>		
<b>HIGHWAY SIGN AND BARRICADE DETAILS</b>		
<b>FOR CONSTRUCTION PROJECTS</b>		
DATED		
STATE OF LOUISIANA		
DEPARTMENT OF TRANSPORTATION AND DEVELOPMENT		
DESIGNED A. Coates	DETAILED D. Belsy	TRACED W.J.M.Jr.
CHECKED D. Belsy	CHECKED A. Coates	CHECKED
APPROVED Original Signed by Chief Engineer DATE		
CHIEF ENGINEER		

DATE	DESCRIPTION	BY/ APPROVED
REVISIONS		

**DDG DUPLANTIS**  
**DESIGN GROUP, PC**

Respect • Integrity • Client Satisfaction • Excellence

THIBODAUX • MANDEVILLE • HOUSTON  
 7335 N. Causeway Boulevard, Suite 201  
 Metairie, Louisiana 70046  
 Phone: 985.626.9847  
 Fax: 985.626.0269

SIGNATURE: \_\_\_\_\_ DATE: \_\_\_\_\_

STAMP

**PROPOSED RETAIL DEVELOPMENT**  
**CITY OF BOULTE**  
**ST. CHARLES PARISH, LOUISIANA**

**FOR THE SPECTRA GROUP, INC.**  
**MEMPHIS, TENNESSEE**

DRAWN NMO	CHECKED THB
DATE 8-10-07	SCALE AS SHOWN
PROJECT NO. 07-205	FILE: 07-205 D1
SHEET	