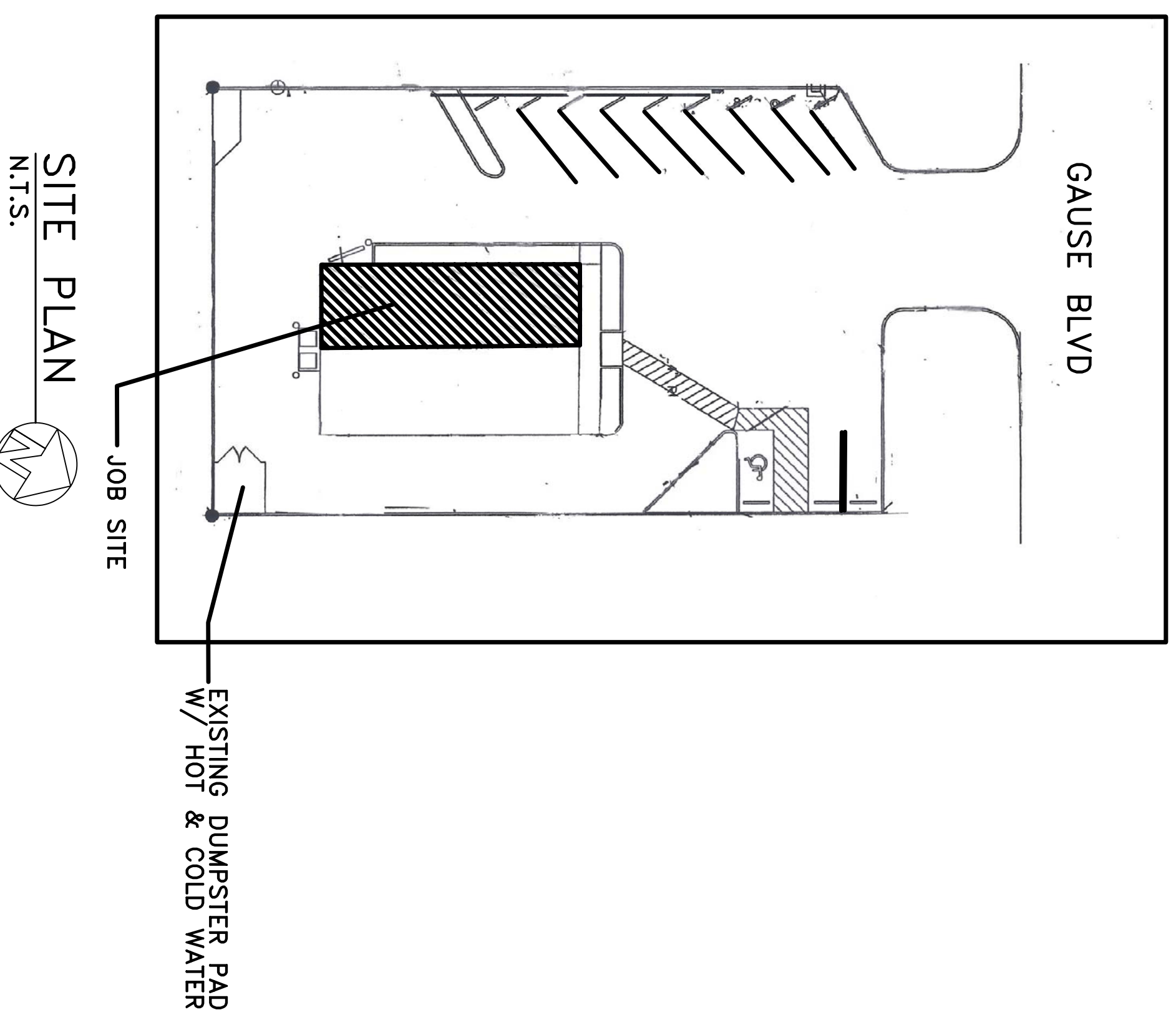


NOT APPROVED FOR CONSTRUCTION

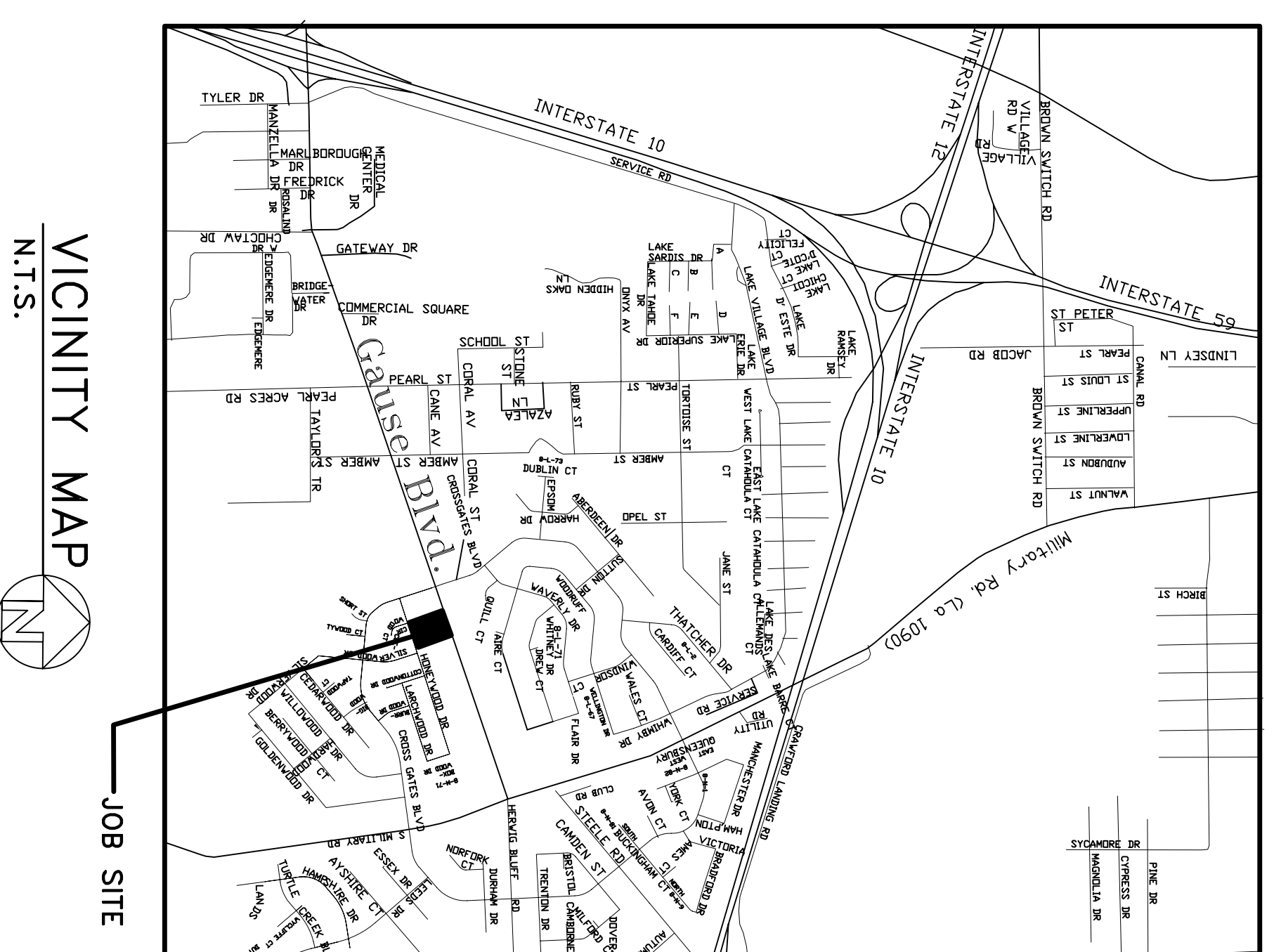


STORE LOCATION  
2349 GAUSE BLVD.  
SLIDELL, LA



SITE PLAN  
N.T.S.

CODE SUMMARY	
TOTAL BUILDING AREA:	2,400 SQ. FT.
LEASE BUILDING AREA:	1,200 SQ. FT.
OCCUPANCY CLASSIFICATION	GROUP M (LESS THAN 50 OCCUPANTS)-LIFE SAFETY CODE NFPA-101, 2009
SECTION 904.1	GROUP B (LESS THAN 50 OCCUPANTS A-2) INTERNATIONAL BUILDING CODE, 2006
BUILDING TYPE	TYPE V-B (WOOD FRAME)
SECTION 909	
OCCUPANT LOAD:	TOTAL SQ. FOOTAGE 1,172 SQ. FT.
IBC TABLE 706.1.1	OCCUPANT LOAD: STANDING NO SEATING 95 SQ. FT. = 19
LIFE SAFETY CODE TABLE 7.3.1.2	FRONT COUNTER 904 SQ. FT. = 9
	KITCHEN/SERVICE AREA 28 OCCUPANTS
MEANS OF EGRESS:	
	NO. OF EXITS 2
	(NFPA 101, 302.4.3)
	(IBC 2006, TBL. 707.5.2)
	EXIT WIDTH PROVIDED 3'-0" (FRONT)
	(EXIT WIDTH REQUIRED 3'-0")
	3'-0" (REAR)
	MAXIMUM DISTANCE TO EXITS 39'-5"
	(2 OR MORE EGRESS - 180° ALLOWED)
	(SINGLE EGRESS - 75° ALLOWED)



VICINITY MAP  
N.T.S.

SHEET INDEX	
TITLESHEET	
A-1 FLOOR PLAN	
A-2 EQUIPMENT PLAN	
A-3 FINISHED AND CEILING PLAN	
M-1 MECHANICAL PLAN	
M-2 MECHANICAL DETAILS	
E-1 POWER & LIGHTING PLAN	
E-2 ELECTRICAL SCHEDULES	
P-1 PLUMBING PLAN	
P-2 PLUMBING DETAILS	

PROJECT DIRECTORY	
FRANCHISEE: (OWNERS)	SELA PIZZA 11LC DBA: MARCO'S PIZZA 1001 CHICORY CT. SLIDELL, LA 70460 CONTACT: BOBBY CURTIS (504) 416-6689 whachamean@aol.com
FRANCHISER:	MARCO'S FRANCHISING, LLC 5252 MONROE STREET TOLEDO, OH 43623-3140 (419) 885-7000 (PHONE) (419) 885-5215 (FAX)
LANDLORD:	TRIAD LLC. ATTN: DON NASH 2349 GAUSE BLVD. SLIDELL, LA 70458 (985) 285-4048
ARCHITECT:	ROBERT WILTSE 1095 Florida Avenue Slidell, Louisiana 70458 (985) 649-5832 (985) 641-5950 FAX

**DAMMON ENGINEERING, INC.**  
EMMETT DAMMON

**ARCHITECT**  
ROBERT WILTSE

1095 FLORIDA AVENUE  
SLIDELL, LA, 70458  
985-649-5832

WEBSITE:  
WWW.DAMMONENGINEERING.COM  
EMAIL:  
DAMMONENG@BELLSOUTH.NET

ARCHITECTURE  
ENGINEERING  
STUDIES  
PLANNING  
INVESTIGATION  
EXPERT WITNESS

**MARCO'S PIZZA TENANT BUILDOUT**

2349 E. GAUSE BLVD  
SLIDELL  
LOUISIANA

TITLE SHEET
2349 E. GAUSE BLVD SLIDELL LOUISIANA

SCALE: AS NOTED
JOB#: 2002
DATE: 11-1-10
SHEET 1
<b>TS-1</b>
OF 10

NOT APPROVED FOR CONSTRUCTION