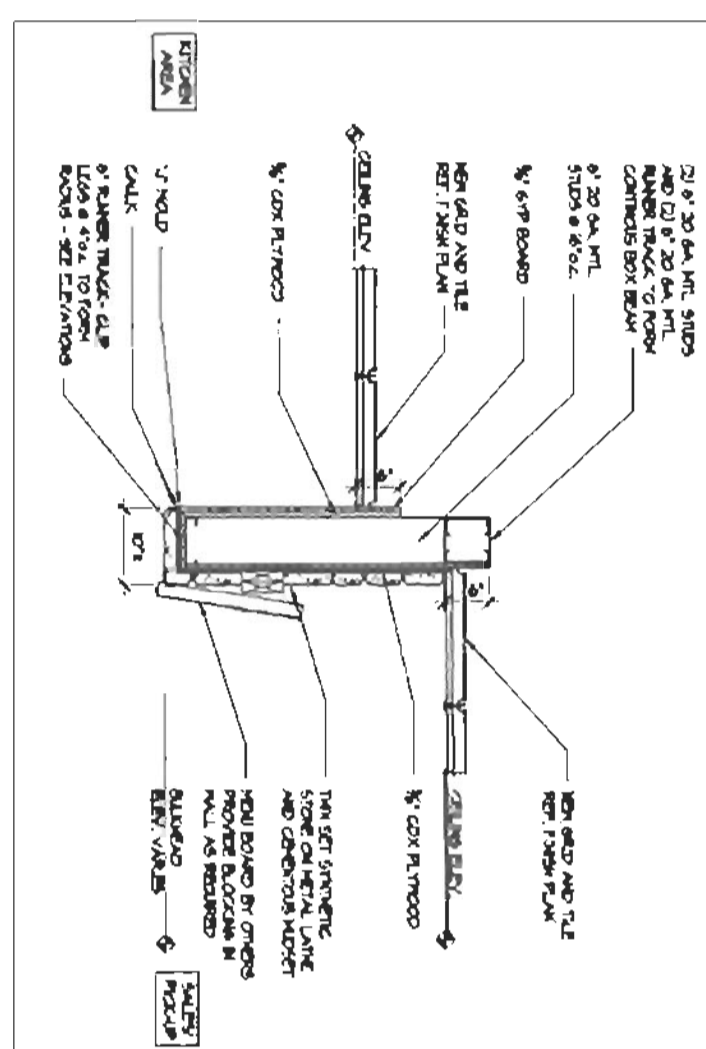
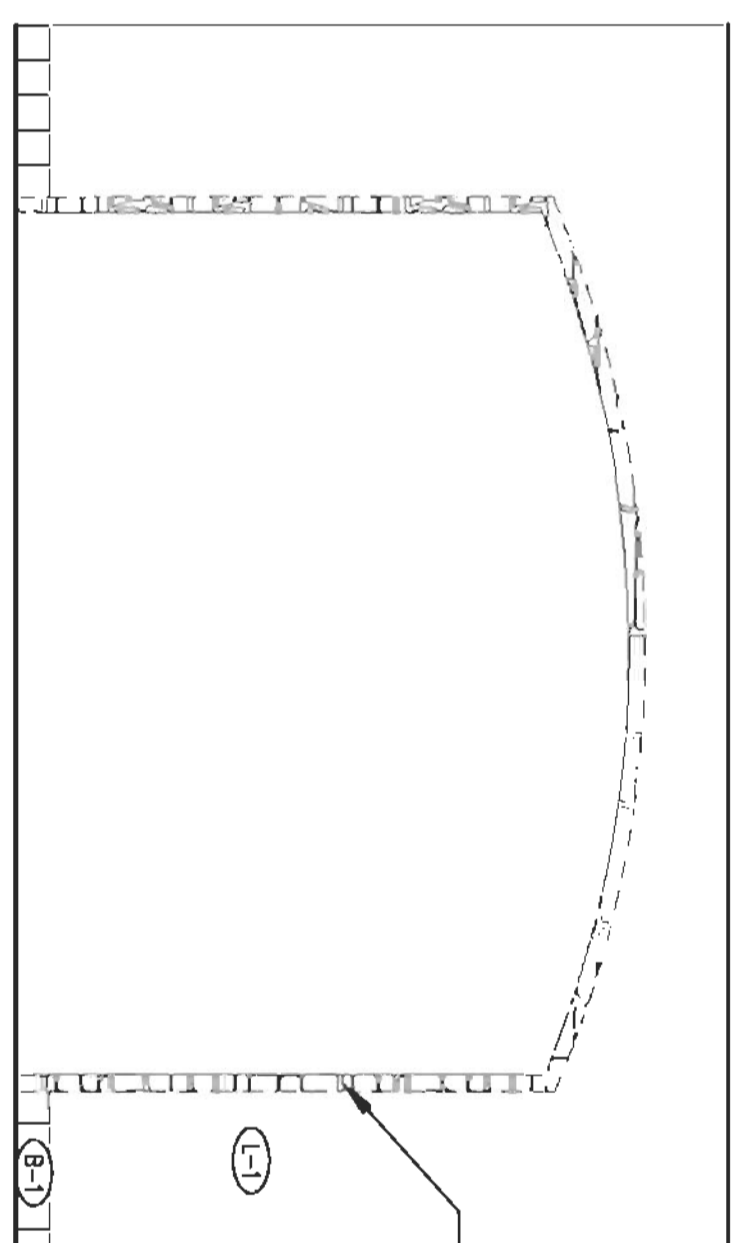


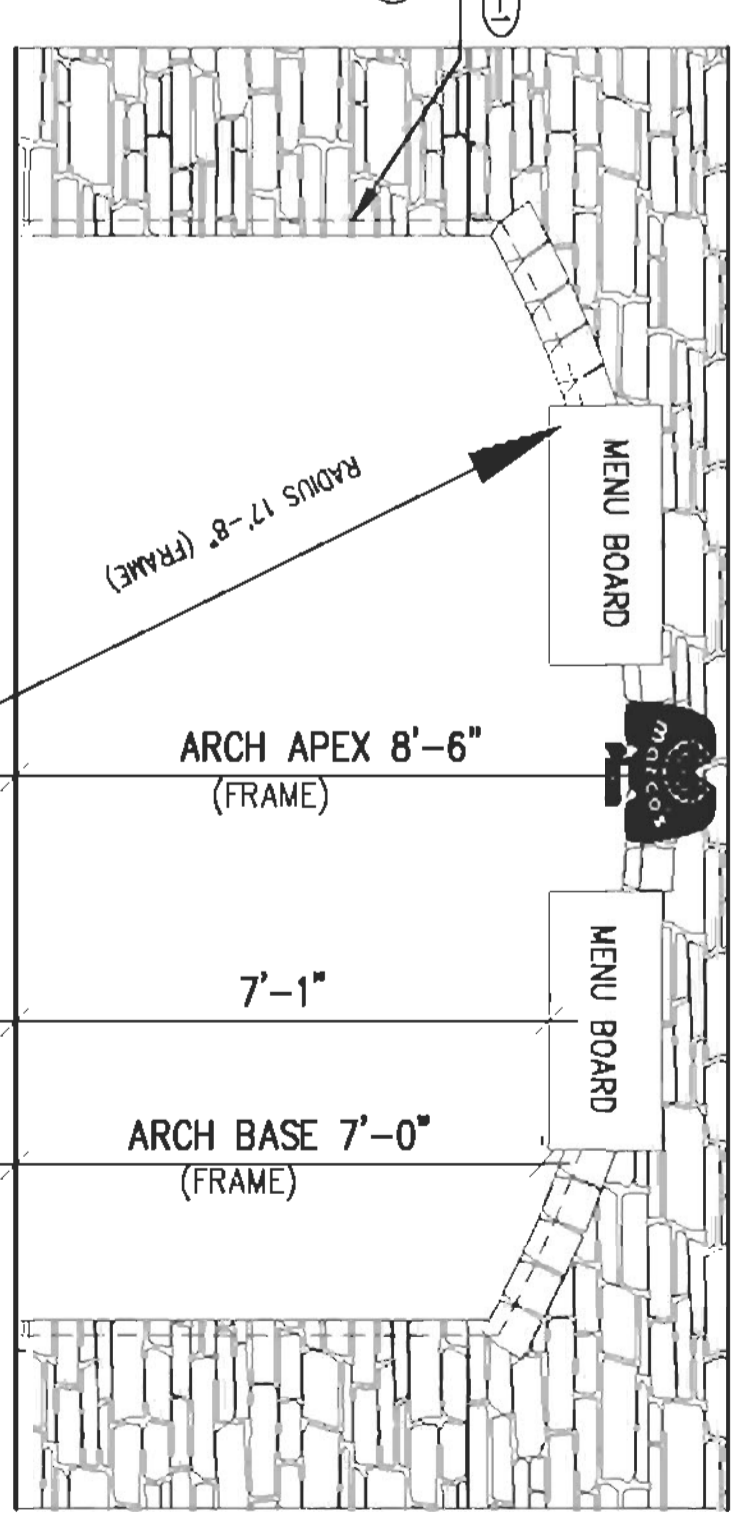
1 RESTROOM ELEVATIONS  
SCALE: 1/8" = 1'-0"



STONE ARCH SECTION  
SCALE: 1/4" = 1'-0"



VENEER WALL  
SCALE: 3/8" = 1'-0"

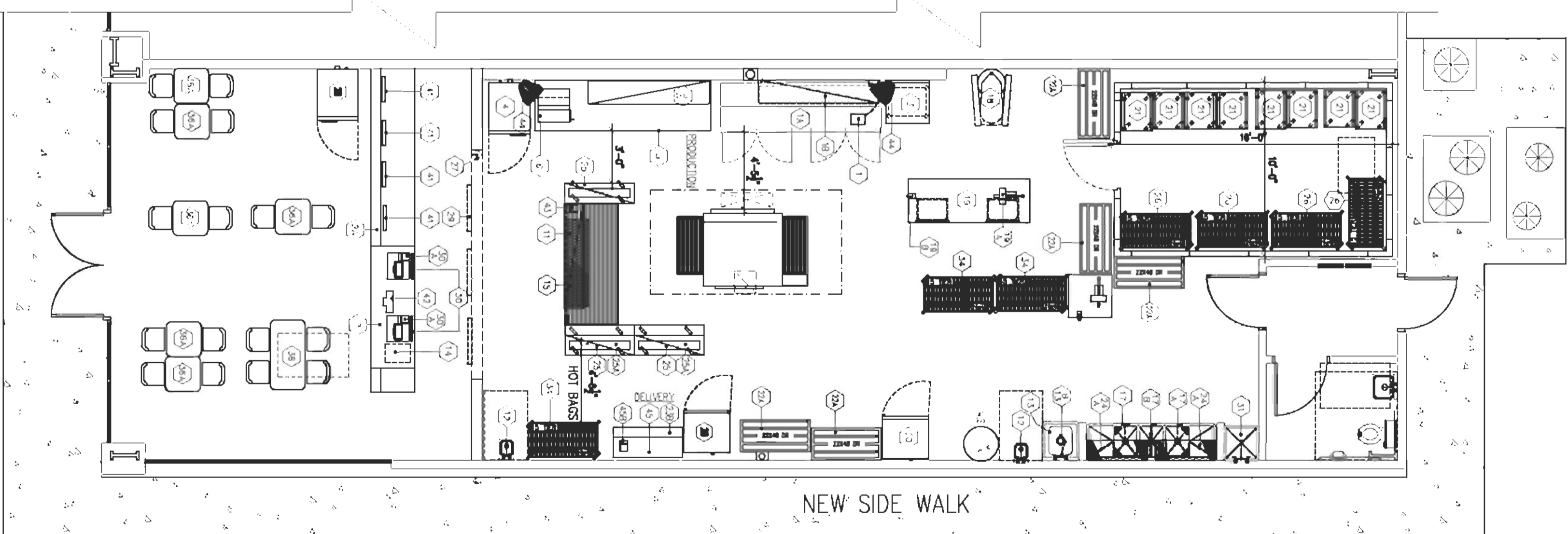


SCALE: 3/8" = 1'-0"

EQUIPMENT SCHEDULE

ITEM #	QTY	MFG	MODEL	DESCRIPTION	ELECTRICAL			PLUMBING								
					VOLTS	RATED AMP	K.W.	H.P.	CONN.	C.W.	H.W.	WASTE	GAS	BTU/HR		
1	1 EA.	VEVEE	6113	SCALE PRINTING UNIT												
1A	1 EA.	ZANUSSI	4-5111	PIZZA FREEZING TABLE REFRIGERATED	120	1	12.8		5/8"							
1B	1 EA.	B. REC. 2025	0-310-CV	5/8" WALL SHELF (48" X 96")												
2	1 EA.	VEVEE	6113	SINKS & PHONE COUNTER												
2A	1 EA.	VEVEE	6113	SINKS & PHONE COUNTER												
3	1 EA.	VEVEE	6113	18 GA 5/8" WORK TABLE (36" X 36")												
4	1 EA.	VEVEE	6113	18 GA 5/8" PIZZA STRETCHER TABLE (36" X 36")												
5	1 EA.	VEVEE	6113	18 GA 5/8" PIZZA STRETCHER TABLE (36" X 36")												
6	1 EA.	VEVEE	6113	18 GA 5/8" WALL SHELF (48" X 96")												
7	1 EA.	VEVEE	6113	18 GA 5/8" WALL SHELF (48" X 96")												
8	1 EA.	VEVEE	6113	18 GA 5/8" WALL SHELF (48" X 96")												
9	1 EA.	VEVEE	6113	18 GA 5/8" WALL SHELF (48" X 96")												
10	1 EA.	VEVEE	6113	18 GA 5/8" WALL SHELF (48" X 96")												
11	1 EA.	VEVEE	6113	18 GA 5/8" WALL SHELF (48" X 96")												
12	1 EA.	VEVEE	6113	18 GA 5/8" WALL SHELF (48" X 96")												
13	1 EA.	VEVEE	6113	18 GA 5/8" WALL SHELF (48" X 96")												
14	1 EA.	VEVEE	6113	18 GA 5/8" WALL SHELF (48" X 96")												
15	1 EA.	VEVEE	6113	18 GA 5/8" WALL SHELF (48" X 96")												
16	1 EA.	VEVEE	6113	18 GA 5/8" WALL SHELF (48" X 96")												
17	1 EA.	VEVEE	6113	18 GA 5/8" WALL SHELF (48" X 96")												
18	1 EA.	VEVEE	6113	18 GA 5/8" WALL SHELF (48" X 96")												
19	1 EA.	VEVEE	6113	18 GA 5/8" WALL SHELF (48" X 96")												
20	1 EA.	VEVEE	6113	18 GA 5/8" WALL SHELF (48" X 96")												
21	1 EA.	VEVEE	6113	18 GA 5/8" WALL SHELF (48" X 96")												
22	1 EA.	VEVEE	6113	18 GA 5/8" WALL SHELF (48" X 96")												
23	1 EA.	VEVEE	6113	18 GA 5/8" WALL SHELF (48" X 96")												
24	1 EA.	VEVEE	6113	18 GA 5/8" WALL SHELF (48" X 96")												
25	1 EA.	VEVEE	6113	18 GA 5/8" WALL SHELF (48" X 96")												
26	1 EA.	VEVEE	6113	18 GA 5/8" WALL SHELF (48" X 96")												
27	1 EA.	VEVEE	6113	18 GA 5/8" WALL SHELF (48" X 96")												
28	1 EA.	VEVEE	6113	18 GA 5/8" WALL SHELF (48" X 96")												
29	1 EA.	VEVEE	6113	18 GA 5/8" WALL SHELF (48" X 96")												
30	1 EA.	VEVEE	6113	18 GA 5/8" WALL SHELF (48" X 96")												
31	1 EA.	VEVEE	6113	18 GA 5/8" WALL SHELF (48" X 96")												
32	1 EA.	VEVEE	6113	18 GA 5/8" WALL SHELF (48" X 96")												
33	1 EA.	VEVEE	6113	18 GA 5/8" WALL SHELF (48" X 96")												
34	1 EA.	VEVEE	6113	18 GA 5/8" WALL SHELF (48" X 96")												
35	1 EA.	VEVEE	6113	18 GA 5/8" WALL SHELF (48" X 96")												
36	1 EA.	VEVEE	6113	18 GA 5/8" WALL SHELF (48" X 96")												
37	1 EA.	VEVEE	6113	18 GA 5/8" WALL SHELF (48" X 96")												
38	1 EA.	VEVEE	6113	18 GA 5/8" WALL SHELF (48" X 96")												
39	1 EA.	VEVEE	6113	18 GA 5/8" WALL SHELF (48" X 96")												
40	1 EA.	VEVEE	6113	18 GA 5/8" WALL SHELF (48" X 96")												
41	1 EA.	VEVEE	6113	18 GA 5/8" WALL SHELF (48" X 96")												
42	1 EA.	VEVEE	6113	18 GA 5/8" WALL SHELF (48" X 96")												
43	1 EA.	VEVEE	6113	18 GA 5/8" WALL SHELF (48" X 96")												
44	1 EA.	VEVEE	6113	18 GA 5/8" WALL SHELF (48" X 96")												
45	1 EA.	VEVEE	6113	18 GA 5/8" WALL SHELF (48" X 96")												
46	1 EA.	VEVEE	6113	18 GA 5/8" WALL SHELF (48" X 96")												
47	1 EA.	VEVEE	6113	18 GA 5/8" WALL SHELF (48" X 96")												
48	1 EA.	VEVEE	6113	18 GA 5/8" WALL SHELF (48" X 96")												
49	1 EA.	VEVEE	6113	18 GA 5/8" WALL SHELF (48" X 96")												
50	1 EA.	VEVEE	6113	18 GA 5/8" WALL SHELF (48" X 96")												

NOTE: ARCHITECT/CONTRACTOR TO CALCULATE RATED LOADS & SIZE REQUIRED FOR SERVICE AND PROTECTIVE DEVICES.



EQUIPMENT PLAN  
SCALE: 3/8" = 1'-0"

**MARCO'S PIZZA TENANT BUILDOUT**

4638 Hwy. 22  
Mandeville  
Louisiana  
70471-2820

**DAMMON ENGINEERING, INC.**  
EMMETT DAMON  
ARCHITECT  
ROBERT WILTSE

1095 FLORIDA AVENUE  
SLIDELL, LA. 70458  
985-649-5832

WWW.DAMMONENGINEERING.COM  
EMAIL: DAMMONENG@BELLSOUTH.NET

**EQUIPMENT PLAN**

SCALE: AS NOTED

JOB#: 2107

DATE: 5-25-11

SHEET 3

**A-2**

OF 11