

DAMMON
ENGINEERING, INC.

EMMETT
DAMMON

ARCHITECT
ROBERT
WILTSE

1095 FLORIDA AVENUE
SLIDELL, LA. 70458
985-649-5832

WEBSITE:
WWW.DAMMONENGINEERING.COM
EMAIL:
DAMMONENG@BELLSOUTH.NET

ARCHITECTURE

ENGINEERING

STUDIES

PLANNING

INVESTIGATION

EXPERT WITNESS

MARCO'S
PIZZA
TENANT
BUILDOUT

4638 Hwy. 22
Mandeville
Louisiana
70471-2820

MECHANICAL
DETAILS

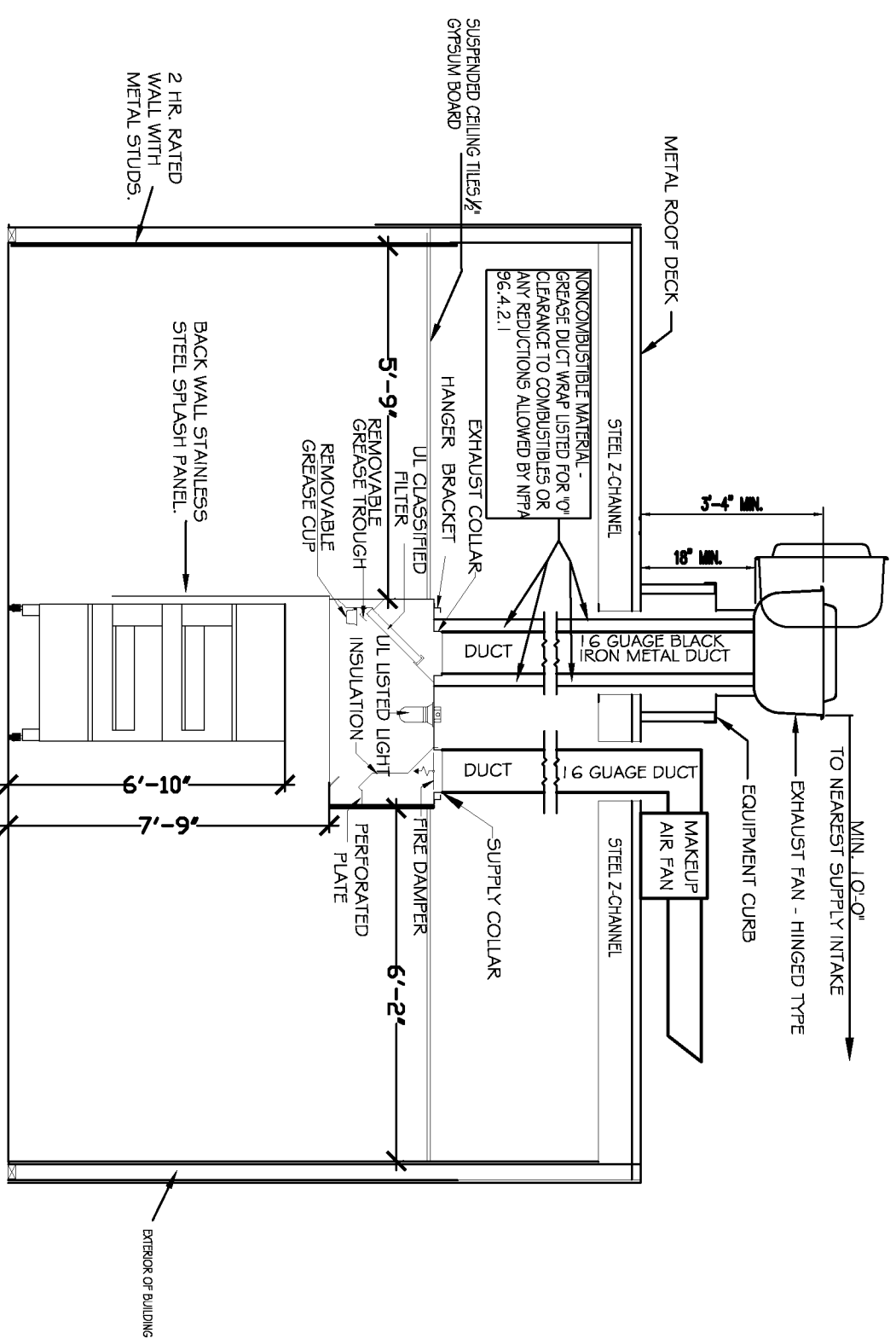
SCALE: AS NOTED
JOB#: 2107
DATE: 5-25-11
SHEET 6

M-2

OF 11

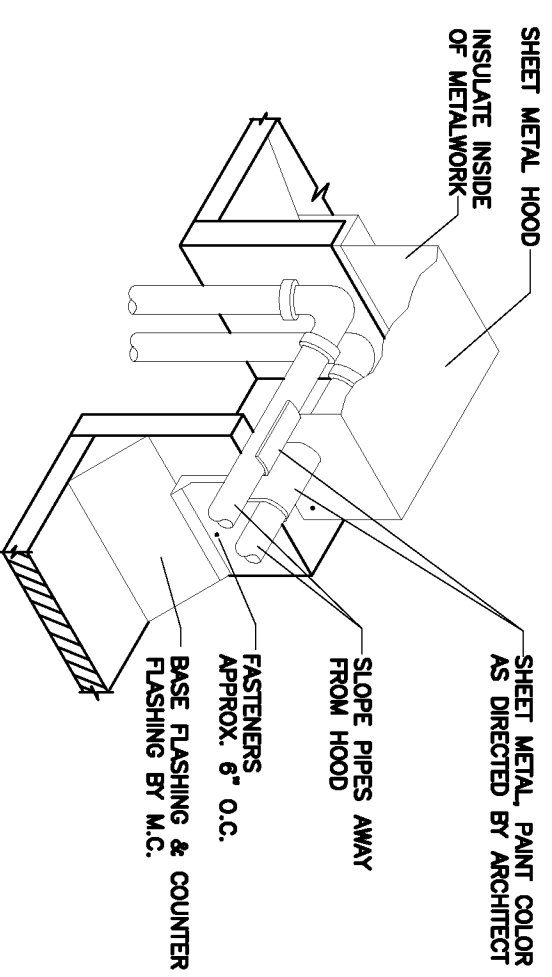
TYPICAL MARCO'S PIZZA HOOD & DUCT INSTALLATION W/CLEARANCE REDUCTION MATERIALS TO PROTECT COMBUSTIBLES

N.T.S



HOOD INFORMATION TABLE

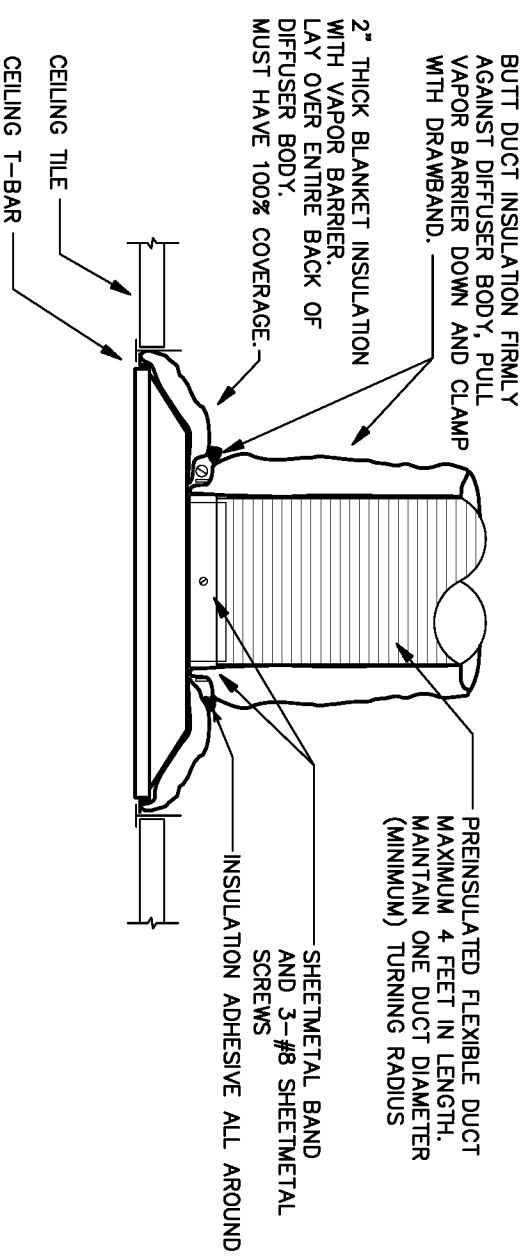
NO.	HOOD LENGTH	WALL HEIGHT	AIR REQUIREMENTS		STEEL Z-CCHANNEL		HOOD CONFIGURATION	REMAIN	CEILING ENCLOSURE
			SIZE	TOTAL	W	L			
1	11'-4"	40 INCH	1	1	1	1	1	1	1



REFRIGERANT LINE/CONDUIT PIPE CURB DETAIL

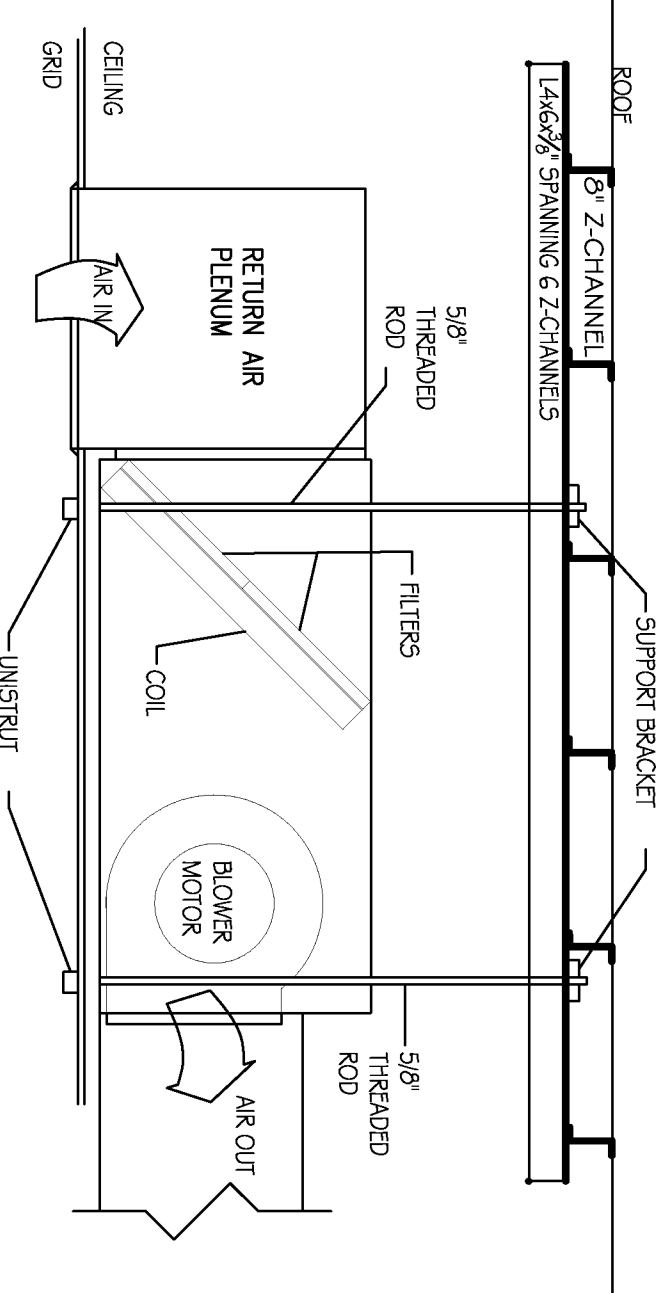
NOT TO SCALE

NOTE: MECHANICAL CONTRACTOR SHALL FINISH AND INSTALL PIPE CURB. COORDINATE SIZE OF CURB WITH ELECTRICAL NEW AND EXISTING SERVICES AND SERVICES.



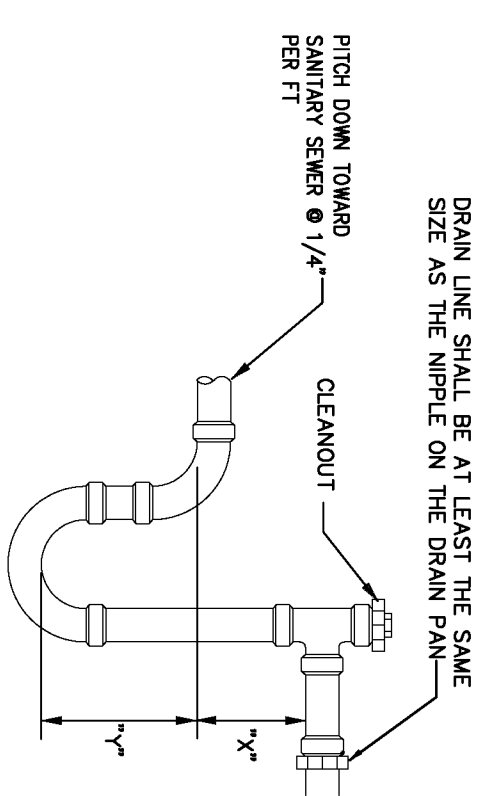
LAY IN DIFFUSER DETAIL

NOT TO SCALE



TYPICAL AIR HANDLING UNIT DETAIL

NOT TO SCALE



NOTES:
LENGTHS "X" AND "Y" SHALL BE DETERMINED BY ROOFTOP UNIT EQUIPMENT BASED ON TOTAL STATIC PRESSURE.
"X" AND "Y" SHALL BE EQUAL TO MINIMUM 1/2 TOTAL UNIT STATIC PRESSURE.
ALL CONDENSATE PIPING SHALL BE SLOPED AT 1/4" PER FOOT

CONDENSATE TRAP DETAIL

NOT TO SCALE

Model V-UL upblast exhaust fan with all aluminum construction and adjustable v-belt drive

Exhaust duct cap continuously welded to exhaust duct

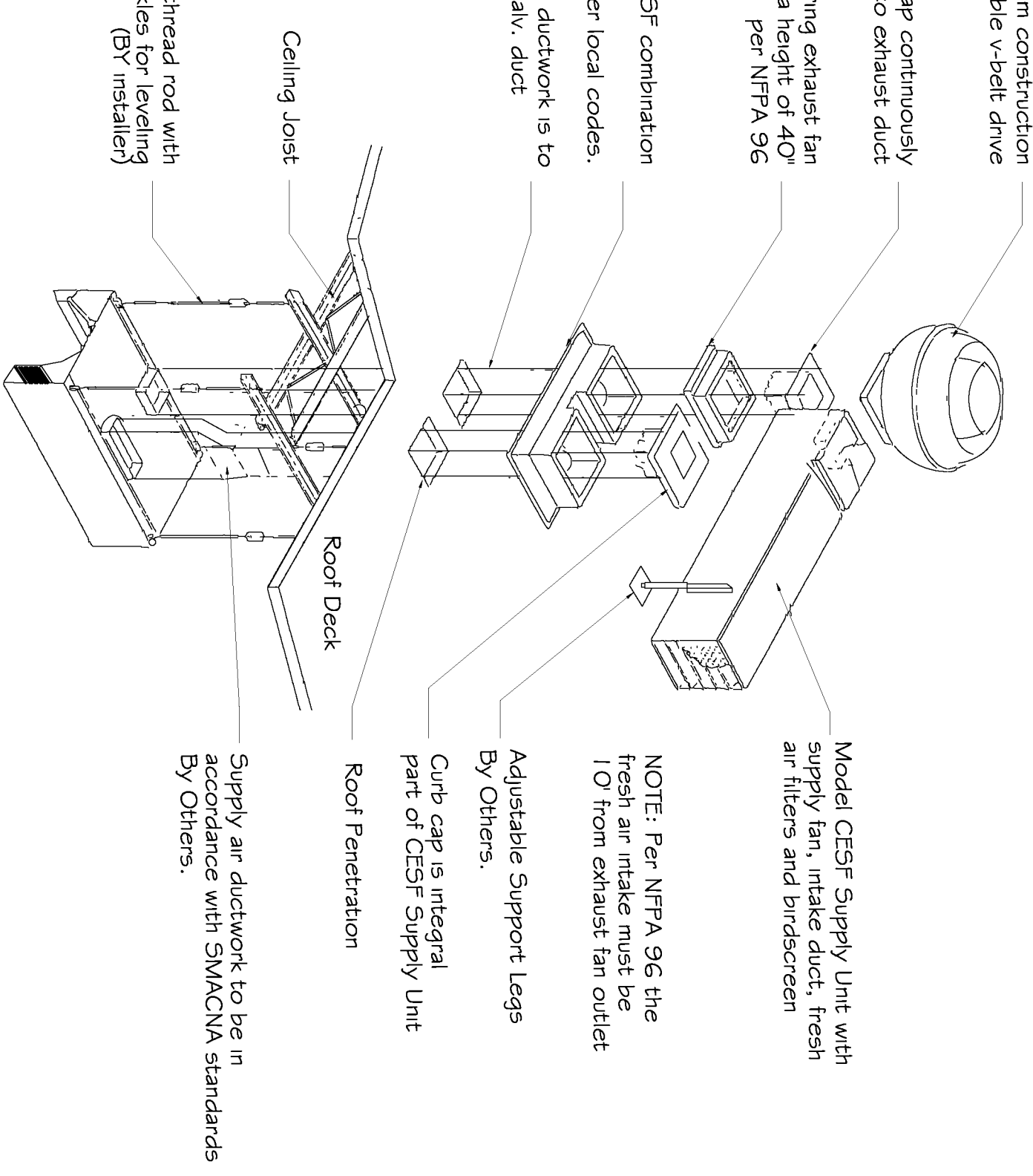
Transition to bring exhaust fan discharge to a height of 40' per NFPA 96

Pretabricated type CE9F combination and height to be per local codes.

Exhaust air ductwork is to be 25ga. galv. duct

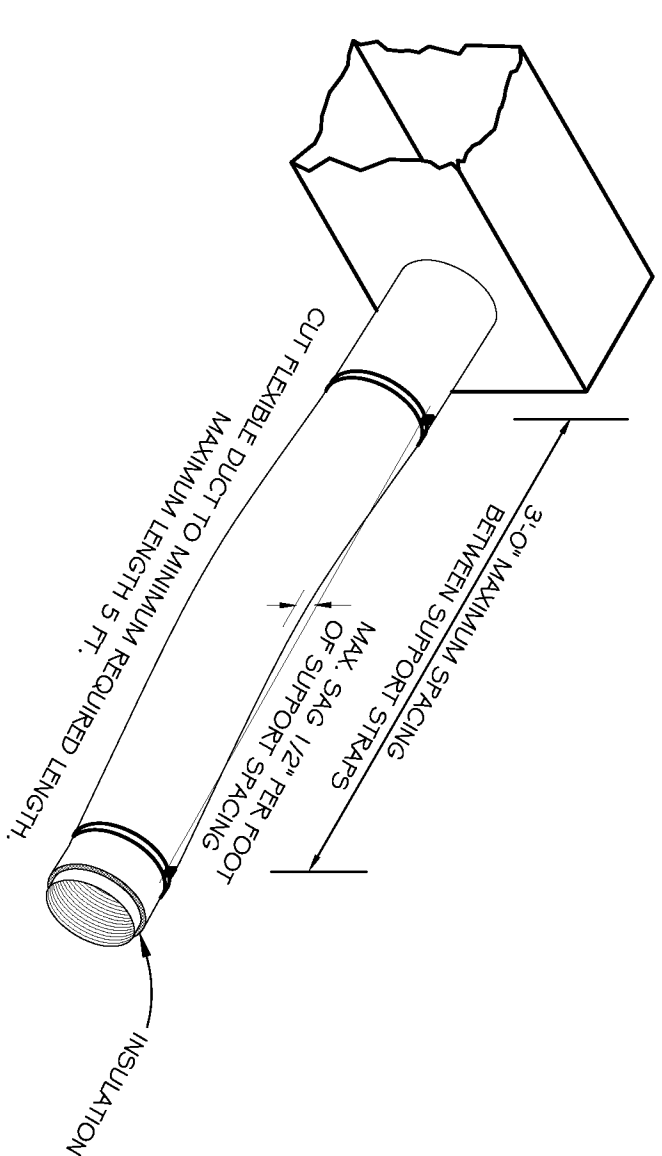
1/2" all thread rod with turnbuckles for leveling (DT installer)

Ceiling Joist



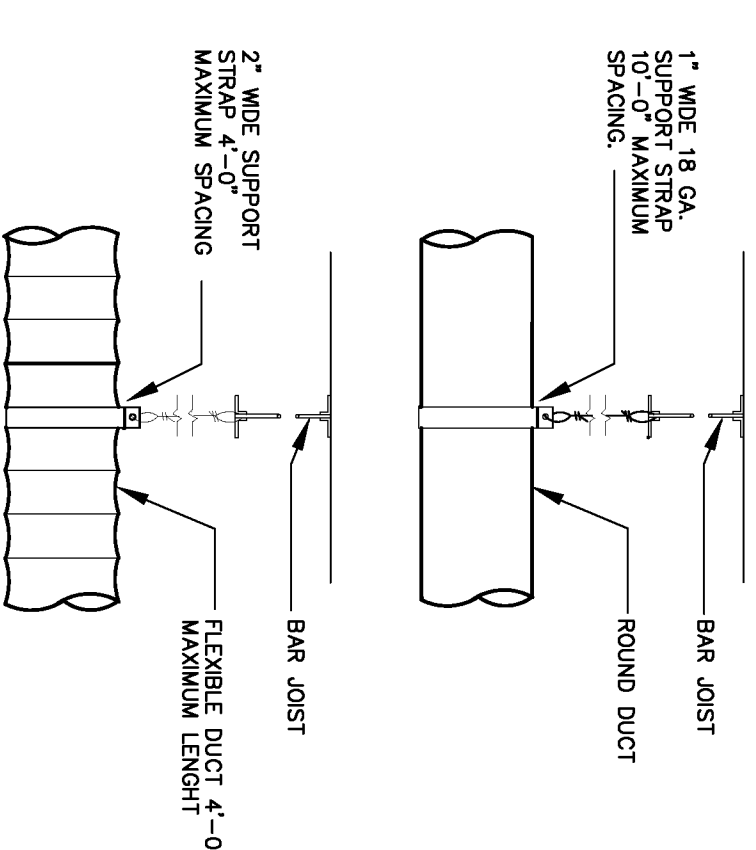
TYPICAL HOOD INSTALLATION

AOV WALL HOOD & CE9F ROOF TOP PACKAGE



FLEX DUCT SUPPORT DETAIL

NOT TO SCALE



DUCT SUPPORT DETAIL

NOT TO SCALE