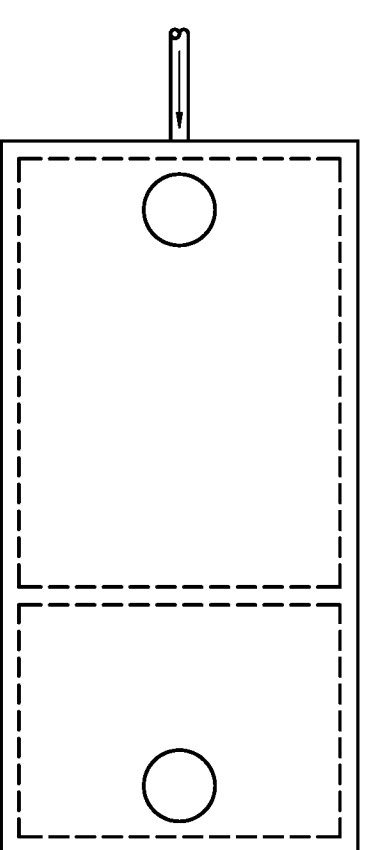


CONSTRUCTION NOTES:

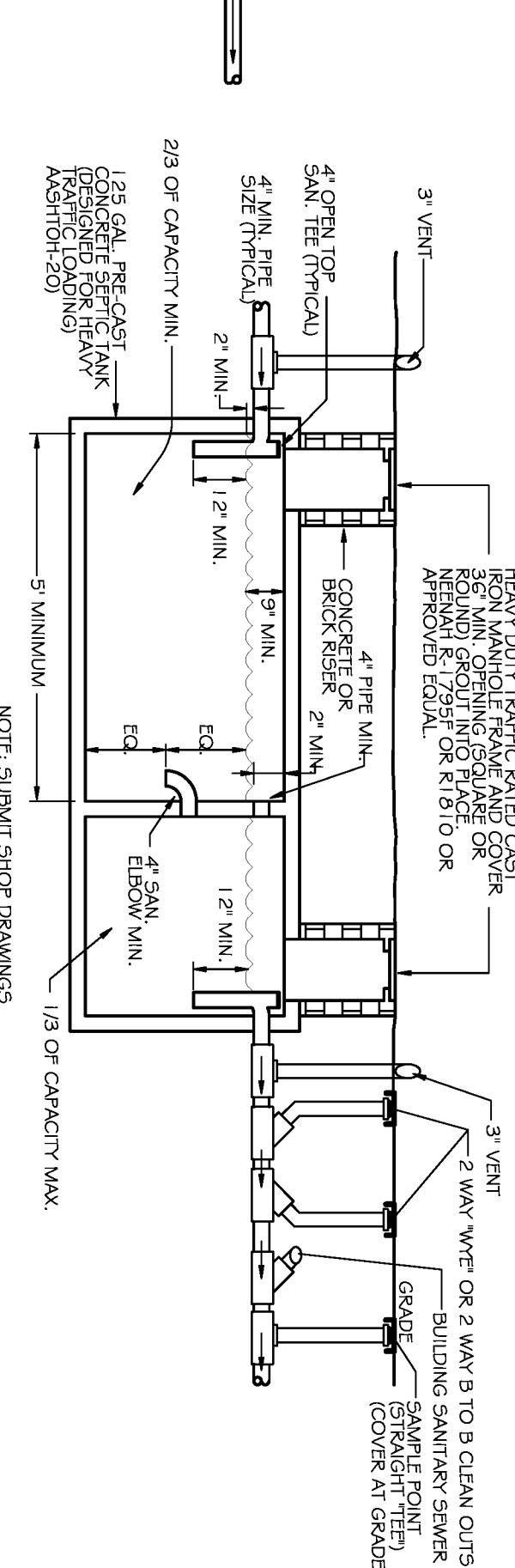
A. REFRIGERATION EQUIPMENT IS INSTALLED WITH HEAT SINK IN CONDENSER. NO CONDENSATION LINES FROM EVAPORATORS ARE REQUIRED.

GENERAL NOTES:

- A. PLUMBING CONTRACTOR SHALL USE LANDLORED ROOFING CONTRACTOR FOR ALL PENETRATIONS
 - B. PLUMBING CONTRACTOR IS TO FURNISH AND INSTALL ALL FIXTURES COMPLETE AS LISTED IN PLUMBING FIXTURE SCHEDULE. PROVIDE ALL LABOR, MATERIAL AND EQUIPMENT FOR A COMPLETE OPERATING SYSTEM. THE SYSTEM SHALL INCLUDE HOT AND COLD WATER PIPING, SEWER AND VENT PIPING, INSULATION, WATER HEATER, HANGERS, VALVES, SUPPORTS WITHOUT ANY RESTRICTIONS TO VOLUME.
 - C. ALL HANDICAP PLUMBING FIXTURES SHALL BE INSTALLED TO COMPLY WITH STATE AND LOCAL CODES. P.C. SHALL FURNISH AND INSTALL CODE COMPLIANT TRAP WEAP ON ALL EXPOSED WATER WASTE LINES FOR ALL HANDICAP ACCESSIBLE LAVATOIRES.
 - D. CONTRACTOR IS TO FIELD VERIFY ALL EXISTING UTILITY LOCATIONS, ELEVATIONS AND SIZES PRIOR TO COMMENCING ANY WORK. PLUMBER TO VERIFY SLAB CONDITIONS (POST TENSION OR CONVENTIONAL) BEFORE COMMENCING WORK. WHERE A RENOVATION IS TO OCCUR, THE PLUMBING CONTRACTOR SHALL VISIT THE SITE TO DETERMINE THE EXTENT OF DEMOLITION REQUIRED, PRIOR TO SUBMITTING BID.
 - E. PLUMBING CONTRACTOR SHALL PROVIDE AS-BUILT DRAWINGS TO THE GENERAL CONTRACTOR PRIOR TO FINAL PAYMENT.
 - F. ALL WORK SHALL BE INSTALLED TO COMPLY WITH LOCAL AND STATE PLUMBING CODE REQUIREMENTS, AND PER LOCAL HEALTH DEPARTMENT REQUIREMENTS.
 - G. HOT WATER CAPACITY SHALL BE A MINIMUM OF 50 GAL. WITH QUICK RECOVERY. THE PRESSURE RELIEF MUST BE CONNECTED EITHER INDIRECTLY TO THE SANITARY SEWER OR DIRECTLY OUTSIDE.
 - H. TEST ALL PIPING AT REQUIRED PRESSURE.
 - I. ALL PLUMBING SHALL BE CLOSELY COORDINATED WITH STRUCTURAL SYSTEM, MECHANICAL SYSTEM AND ELECTRICAL TO INSURE NO TRADES WILL CONFLICT WITH EACH OTHER.
 - J. DO NOT SCALE DRAWINGS. SEE ARCHITECTURAL DRAWINGS FOR EXACT LOCATIONS OF DOORS, WINDOWS, WALLS, FIXTURES, ETC.
 - K. ALL WATER MAINS AND PIPING NOT SHOWN FOR CLARITY, ALL LOCATIONS SHALL BE FIELD VERIFIED.
 - L. ALL ELECTRICAL, MECHANICAL & PLUMBING PENETRATING FIRE PARTITIONS SHALL BE FIRE CALLED, PENETRATIONS THROUGH RATED CONSTRUCTION SHALL BE SEALED WITH A MATERIAL CAPABLE OF PREVENTING THE PASSAGE OF FLAMES AND HOT GASES WHEN TESTED IN ACCORDANCE WITH ASTM-E814.)
- WASTE AND VENT PIPING:**
- A. PLUMBING CONTRACTOR SHALL USE SCHEDULE 40 POLYVINYL CHLORIDE PIPE FOR ALL SOIL, WASTE AND VENT PIPING WHERE PERMITTED BY LOCAL CODES. WHERE PVC PIPING IS NOT PERMITTED BY LOCAL CODES, USE STANDARD WEIGHT CAST IRON PIPING. ALL PIPING ABOVE GRADE MAY HAVE HUBLESS FITTINGS. PLASTIC PIPING SHALL NOT BE USED IN RETURN AIR FLENDU. COORDINATE THIS REQUIREMENT WITH HVAC CONTRACTOR PRIOR TO INSTALLATION.
 - B. CONTRACTOR SHALL FIELD VERIFY INVERT ELEVATIONS OF ALL NEW AND EXISTING SANITARY SEWERS PRIOR TO ROUGH-IN.
 - C. NEW SEWERAGE LINES 3-INCH AND SMALLER SHALL BE SLOPED 1/4" PER FOOT AND LINES 4-INCH AND LARGER SHALL BE SLOPED 1/8" PER FOOT.
 - D. ELEVATION OF ALL FLOOR DRAINS SHALL BE FIELD 1/2" BELOW FINISH FLOOR TIE.
 - E. ALL CLEANOUTS SHALL BE INSTALLED FLUSH WITH FINISHED GRADE/FINISHED FLOORS.
 - F. HOLD ALL PLUMBING VENTS A MINIMUM OF 10'-0" FROM OUTSIDE AIR INTAKES. WHERE STATE OR LOCAL CODES REQUIRE MORE SEPARATION, P.C. SHALL OFFSET TO MEET THE MORE STRINGENT CODE ON HVAC EQUIPMENT. COORDINATE LOCATION WITH M.C.
 - G. WHERE HVAC UNITS ARE LOCATED IN MECHANICAL CLOSETS, P.C. SHALL COORDINATE PLACEMENT OF DRAINS WITH M.C. & HVAC EQUIPMENT PRIOR TO ROUGH-IN OF UNDERGROUND PLUMBING.
- WATER PIPING:**
- A. ALL WATER PIPING BELOW GRADE SHALL BE TYPE "1" SOFT TEMPERED COPPER AND ALL WATER PIPING ABOVE GRADE SHALL BE TYPE "1" HARD TEMPERED COPPER.
 - B. INSTALL 1" FOAM RUBBER INSULATION ON ALL HOT AND COLD WATER PIPING BELOW AND ABOVE GRADE. ALL JOINTS IN INSULATION ARE TO BE TAPED.
 - C. ALL DOMESTIC WATER PIPING SHALL BE DISINFECTED PRIOR TO USE BY BUILDING OCCUPANT. PLUMBING CONTRACTOR SHALL DISINFECT PER REQUIREMENTS OF LOCAL HEALTH DEPT., STATE/LOCAL PLUMBING CODE.
 - D. ALL PLUMBING HOSE BIBBS OR VALVES WITH THREADED CONNECTIONS SHALL BE PROVIDED WITH VACUUM BREAKERS AND APPROVED MEANS OF BACK-LOW PREVENTION AS REQUIRED BY STATE AND LOCAL CODES.
 - E. PROVIDE SHUT-OFF VALVES ON ALL EQUIPMENT AND STOP COCKS IN HOT AND COLD WATER PIPING FIXTURES.
 - F. PLUMBING CONTRACTOR SHALL PROVIDE DIELECTRIC UNIONS AT ALL PIPING CONNECTIONS WHERE DISSIMILAR PIPING IS JOINED.
 - G. ALL HOT AND COLD WATER, WASTE, AND VENT PIPING TO BE SUPPORTED PER LOCAL PLUMBING CODE.
- NATURAL GAS PIPING:**
- A. CONTRACTOR SHALL COORDINATE INSTALLATION OF GAS METER WITH LOCAL GAS CO. REQUIREMENTS PRIOR TO INSTALLATION.
 - B. GAS PIPING OPERATING AT PRESSURES HIGHER THAN 1 LB. WHERE INSTALLED IN BUILDING SHALL HAVE WELDED JOINTS. PIPING BELOW 1 LB. PRESSURE SHALL HAVE THREADED CONNECTIONS.
 - C. ALL GAS PIPING SHALL BE STANDARD WEIGHT SCHEDULE 40 BLACK STEEL PIPE. PIPE SHALL BE THREADED OR WELDED AS DIRECTED BY LOCAL GAS CO. AND STATE/LOCAL PLUMBING CODES.
 - D. PROVIDE ALL GAS PIPING COMPLETE WITH ALL REQUIRED FITTINGS, STRAYS, HANGERS, SUPPORT, ETC. OBTAIN ALL REQUIRED INSPECTIONS AND APPROVALS. ALL GAS PIPING SHALL BE INSTALLED IN ACCORDANCE WITH THE LATEST EDITION OF NFPA 54 AND ANY APPLICABLE STATE OR LOCAL CODES OR REGULATIONS.
 - E. ALL GAS PIPING, WHERE ROUTED ON ROOF, SHALL BE SUPPORTED BY 4"x4" TREATED WOOD BLOCKING 10'-0" O.C.. PROVIDE PIPE CLAMPS ON WOOD BLOCKING TO SECURE PIPING.
 - F. PAINT ALL GAS PIPING EXPOSED TO WEATHER WITH (2) COATS OF RUSTOLEUM OR EQUAL PAINT. COLOR TO BE SELECTED BY OWNER OR GENERAL CONTRACTOR.
 - G. PLUMBING CONTRACTOR TO MAKE FINAL CONNECTION TO ALL GAS FIRED EQUIPMENT. PROVIDE GAS SHUT-OFF VALVE AND 6" DIKT LEG AT EACH CONNECTION.
 - H. PLUMBING CONTRACTOR SHALL INSTALL AND CONNECT FLEXIBLE GAS PIPING PROVIDED WITH GAS FIRED OVEN EQUIPMENT AND MAKE ALL FINAL CONNECTIONS TO OVEN COMPLETE.
 - I. PLUMBING CONTRACTOR SHALL PAINT GAS PIPING EXPOSED IN STORE BELOW CEILING GRID SILVER.



PLAN VIEW



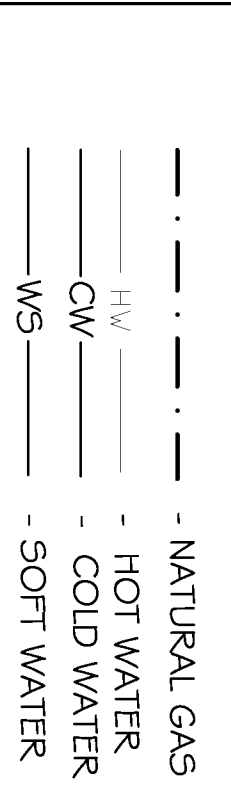
TYPICAL GREASE TRAP 2 (P-3)
NOT TO SCALE

PLUMBING FIXTURE SCHEDULE

(BY PLUMBING CONTRACTOR)	DESCRIPTION
WATER CLOSET - "WC"	AMERICAN STANDARD 221 G. 143 1/2" HGT. 1/2" THICK HANDICAPPED WITH TANK. 5500 OPEN FRONT ELONGATED WHITE SEAT LESS 10" FLUSHING MECHANISM SHALL BE LOCATED ON THE WIDE SIDE OF EACH WATER CLOSET.
LAVATORY - "LAV"	AMERICAN STANDARD #4869 004 REGALTY WITH WALL CARRIER AND MOUNT TWO HANDLE MOUNT #484901 AND FOR-UP DRAIN, MOUNT AT HANDICAP HEIGHT.
HAND SINK - "HS"	1 1/2" X 1 1/2" X 6" 30 STAINLESS STEEL HANDSINK PROVIDED BY GULANERK.
MOP SINK - "MS"	FANT MODEL #469 2424 OR EQUAL 24X24X10" FIBERGLASS BODIN WITH 1/2" HGT. 1/2" THICK HANDICAPPED WITH TANK. 5500 OPEN FRONT ELONGATED WHITE SEAT LESS 10" FLUSHING MECHANISM SHALL BE LOCATED ON THE WIDE SIDE OF EACH WATER CLOSET.
THREE COMPARTMENT SINK - "SCS"	24" X 34" STAINLESS STEEL WS-18X1 8X12 2" DEEP SINKS AND DOUBLE DRAIN SINKS - 5500N (ASSEMBLED) PROVIDED BY GULANERK.
WATER HEATER - "WH"	50 GALLON ELECTRIC HOT WATER HEATER.
BACK-FLOW PREVENTER	EQUAL TO WATS NO. 909Q1; COMPANY MODEL # IS APPROVED BY LOCAL AUTHORITY PRIOR TO INSTALLATION. ASSE 1013 VERTICAL INSTALLATION STRAIGHT THROUGH REDUCED PRESSURE ZONE BACK-FLOW PREVENTER. PROVIDE WITH 3" ZURN # ZN-415 WRAP PRIMER.
FLOOR DRAIN - "FD"	EQUAL TO ZURN MODEL 2:1900-3
FLOOR SINK - "FS"	SEE DETAIL SHEET P-2
HUB DRAIN - "HD"	UNIVERSAL STAINLESS INC. KEGGLE SINK (ONE COMPARTMENT SINK), HUB DRAIN W/INDOCT CONNECTION
VEGETE SINK - "VS"	UNIVERSAL STAINLESS INC. KEGGLE SINK (ONE COMPARTMENT SINK), HUB DRAIN W/INDOCT CONNECTION
WATER SOFTNER - "WS"	50 GALLON WATER FILTER

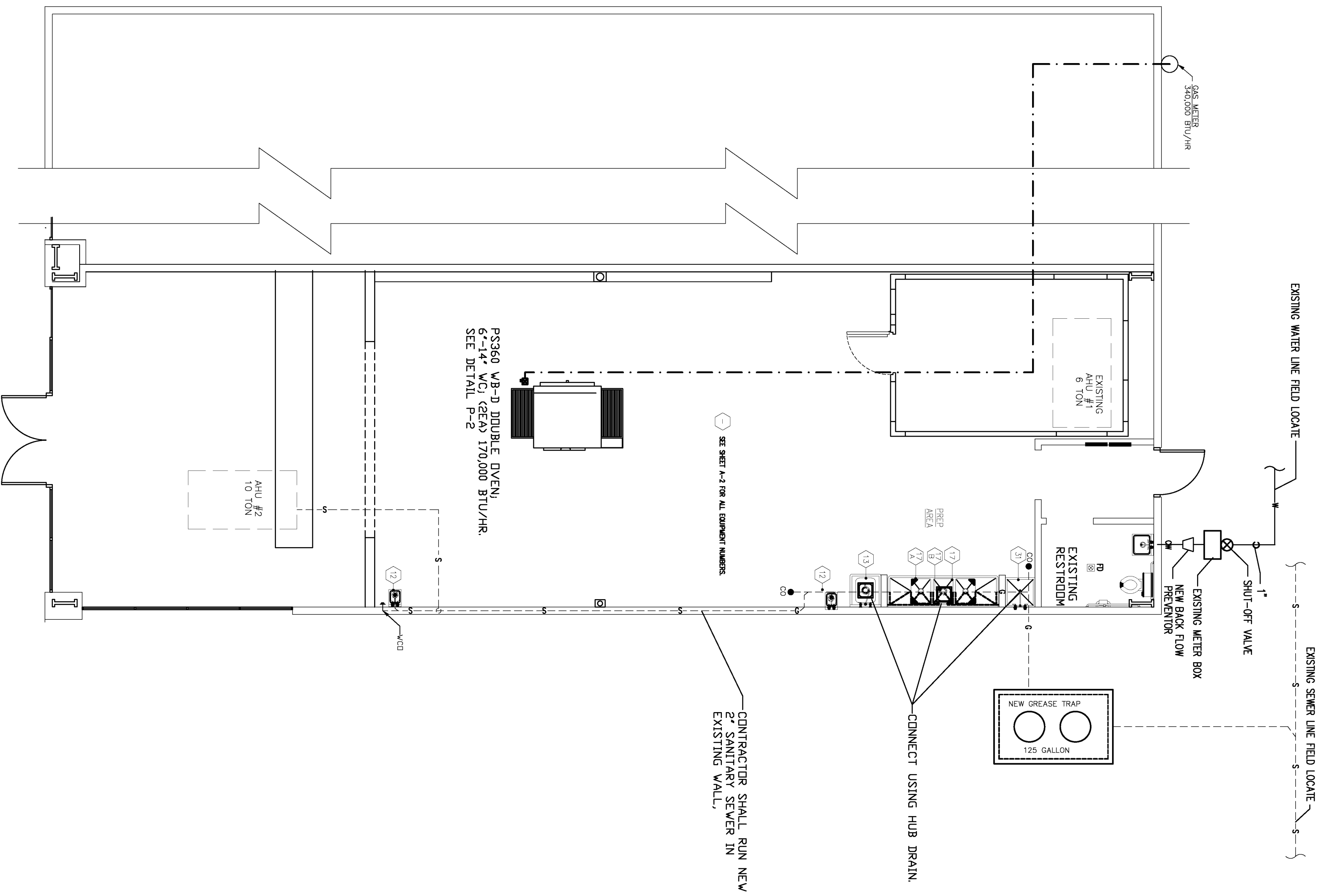
PLUMBING DESIGN BASED UPON LOUISIANA STATE PLUMBING CODE 2000.

PLUMBING SYMBOLS LEGEND

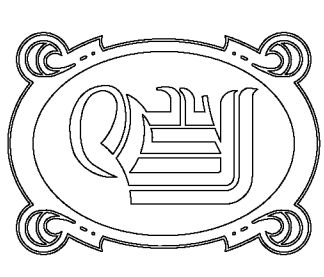


NOTE: ALL GAS PIPING IS SIZED FOR A LOW PRESSURE SYSTEM. (0.5PSIG OR LESS AND A PRESSURE DROP OF 0.5in. OF WATER.)

NOTICE: CONTACT LOUISIANA ONE CALL 48 HRS PRIOR TO ANY DIGGING. THIS IS A FREE SERVICE.



SANITARY SEWER PLAN
SCALE: 3/16" = 1'-0"



DAMMON ENGINEERING, INC.

EMMETT DAMMON

ARCHITECT
ROBERT WILTSE

1095 FLORIDA AVENUE
SLIDELL, LA. 70458
985-649-5832

WEBSITE:
WWW.DAMMONENGINEERING.COM

EMAIL:
DAMMONENG@BELLSOUTH.NET

ARCHITECTURE
ENGINEERING
STUDIES
PLANNING
INVESTIGATION
EXPERT WITNESS

MARCO'S PIZZA
TENANT BUILDOUT

4638 Hwy. 22
Mandeville
Louisiana
70471-2820

PLUMBING PLAN

SCALE: AS NOTED
JOB#: 2107
DATE: 5-25-11
SHEET 10

P-1