

ELECTRICAL SHEET NOTES:

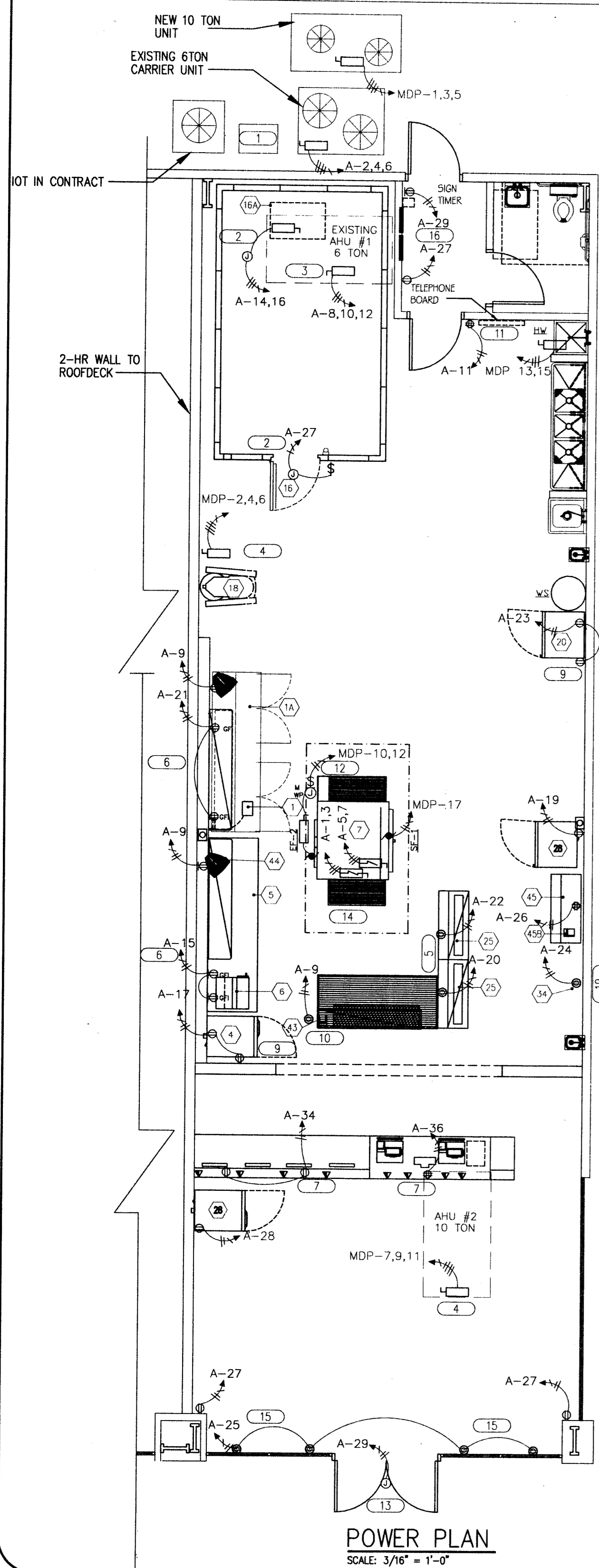
- 2P, 20AMP, 200V, NEMA 3R FUSIBLE DISCONNECT SWITCH FOR CONNECTION TO COOLER COMPRESSOR, FUSE PER UNIT NAME PLATE.
- JUNCTION BOX WITH MOTOR RATED TOGGLE SWITCH IN WEATHER PROOF ENCLOSURE, FOR CONNECTION TO EVAPORATOR UNIT.
- EXISTING 6 TON AHU WITH EXISTING DISCONNECT. TEST/INSPECT/REPLACE AS NECESSARY.
- 3P, 40AMP, 200V NEMA 3R DISCONNECT AND OUTLET.
- TWIST-LOCK OUTLET IN CEILING WITH TWIST-LOCK STRAIN-RELIEF DROP CORD TERMINATING 12" BELOW CUT-TABLE IN A SINGLE STANDARD.
- 3-PRONG GROUNDED OUTLET, OUTLET AND CORD SHALL BE PLACED AT THE SAME LOCATION AS THE OUTLETS FOR THE CUT-TABLE HEAT STRIPS.
- MOUNT RECEPTACLE JUST BELOW SHELF HEIGHT, APPROXIMATE 5FT AFF.
- MOUNT RECEPTACLE UNDER COUNTER TOP AS HIGH AS POSSIBLE.
- NOT USED.
- ELECTRICAL CONTRACTOR SHALL INSTALL DUPLEX RECEPTACLE 6" BELOW LAY-IN CEILING AND 15" RADIUS MINIMUM FROM GAS-FIRED OVEN FOR CONNECTION TO CARBON MONOXIDE DETECTOR. GENERAL CONTRACTOR SHALL PROVIDE AND INSTALL DETECTOR.
- ONE (1) TWIST-LOCK OUTLET IN CEILING WITH TWIST-LOCK STRAIN-RELIEF DROP CORD TERMINATING 12" BELOW CUT-TABLE. ELECTRICAL CONTRACTOR SHALL INSTALL JUNCTION BOX UNDER CUT-TABLE AND NEXT TO REFRIGERATION UNIT. FIELD VERIFY EXACT MOUNTING LOCATION AND CONNECTION REQUIREMENTS PRIOR TO ROUGH-IN.
- TELEPHONE SYSTEM FURNISHED BY PHONE CONTRACTOR MOUNT ON 24X24X3/4" FLYWOOD BACKBOARD, BOTTOM OF BACKBOARD AT 72" A.F.F. BACKBOARD BY ELECTRICAL CONTRACTOR.
- ELECTRICAL CONTRACTOR SHALL INSTALL JUNCTION BOX BELOW SUSPENDED CEILING AND MAKE HARD WIRE CONNECTION TO TYPE 50 CORD DROP TO PIZZA OVEN RECEPTACLE. PROVIDE STRAIN RELIEF FOR CONNECTION AT JUNCTION BOX. FIELD VERIFY EXACT MOUNTING LOCATION AND CONNECTION REQUIREMENTS PRIOR TO ROUGH-IN.
- JUNCTION BOX FOR CONNECTION TO MARCOS SIGN. FIELD VERIFY EXACT MOUNTING LOCATION AND CONNECTION REQUIREMENTS WITH SIGN COMPANY PRIOR TO ROUGH-IN.
- START/STOP SWITCH WITH PILOT LIGHT FOR EF-2 AND 5F-1. PROVIDE WIRING AS REQUIRED.
- DUPLEX RECEPTACLE INSTALLED FLUSH IN CEILING FOR WINDOW SIGNAGE. COORDINATE EXACT LOCATION WITH OWNER PRIOR TO ROUGH-IN.
- TIME CLOCK FOR LIGHTS AND SIGNAGE SHALL BE FOUR POLE, 7 DAY TIMER WITH QUARTZ CARRY-OVER, PARAGON MODEL NO. 7007-00 OR EQUAL. 17. NOT USED.
- SWITCH BANK FOR CONTROL OF INTERIOR LIGHT FIXTURES. ELECTRICAL CONTRACTOR SHALL COORDINATE LOCATION WITH OWNER PRIOR TO ROUGH-IN.
- RECEPTACLE FOR CONNECTION TO HOTBAG.
- INSTALL UNISTRUT FROM FLOOR TO ABOVE CEILING. USE L-BRACKETS TO SECURE UNISTRUT TO FLOOR AND BAR JOIST. ATTACH OUTLET TO UNISTRUT.

ELECTRICAL LEGEND

	LIGHTING AND/OR APPLIANCE PANELBOARD - RECESS MOUNTED.		NUMBER IN HEX SYMBOL REFERS TO EQUIPMENT SPECIFIED IN EQUIPMENT SCHEDULE - SEE SHEET A-2.
	FLOUORESCENT LIGHTING FIXTURE - LETTER REFERS TO FIXTURE TYPE REFER TO LIGHT FIXTURE SCHEDULE.		1P, 20AMP 125 VOLT MOTOR RATED TOGGLE SWITCH WITH WEATHER PROOF ENCLOSURE.
	DISCONNECT SWITCH		SINGLE POLE SWITCH
	FUSED DISCONNECT SWITCH MOTOR OUTLET		SPECIAL RECEPTACLE
	JUNCTION BOX OR OUTLET BOX CONCEALED ABOVE CEILING		WEATHERPROOF
	WALL OR CEILING MOUNTED EMERGENCY EXIT LIGHT		GROUND FAULT INTERRUPTOR
	WALL MOUNTED EMERGENCY EXIT LIGHT W/DUEL LAMP		ISOLATED GROUND
	WALL MOUNTED EMERGENCY 90 MIN. BATTERY PACK W/NO LAMPS		42" MOUNTING HEIGHT ABOVE FINISH FLOOR
	WALL MOUNTED DUEL LAMP 90 MIN. EMERGENCY LIGHT W/BATTERY PACK		NL NIGHT LIGHT
	ELECTRIC SMOKE DETECTOR		ELECTRICAL CONTRACTOR
	DUCT MOUNTED PHOTOELECTRIC SMOKE DETECTOR, 120 VAC.		KITCHEN EQUIPMENT SUPPLIER
	DUPLEX OUTLET 20 A, 125 VOLT RECEPTACLE. MOUNT AT 18" A.F.F. TO CENTER, UNLESS NOTED OTHERWISE.		FULL VOLTAGE NON REVERSING
	DUPLEX OUTLET, RECESSED IN CEILING		CONDUIT BARS INDICATE CONDUCTORS
	QUAD OUTLET		PHASE (HOT)
	COMPUTER DATA CONNECTION & TELEPHONE. E.C. SHALL VERIFY NUMBER OF DROPS AND EXACT LOCATION OF DROPS WITH OWNER PRIOR TO ROUGH-IN.		NEUTRAL (GROUND)
	BELL AND TRANSFORMER		EQUIPMENT GROUNDING
	DOOR BELL BUTTON		

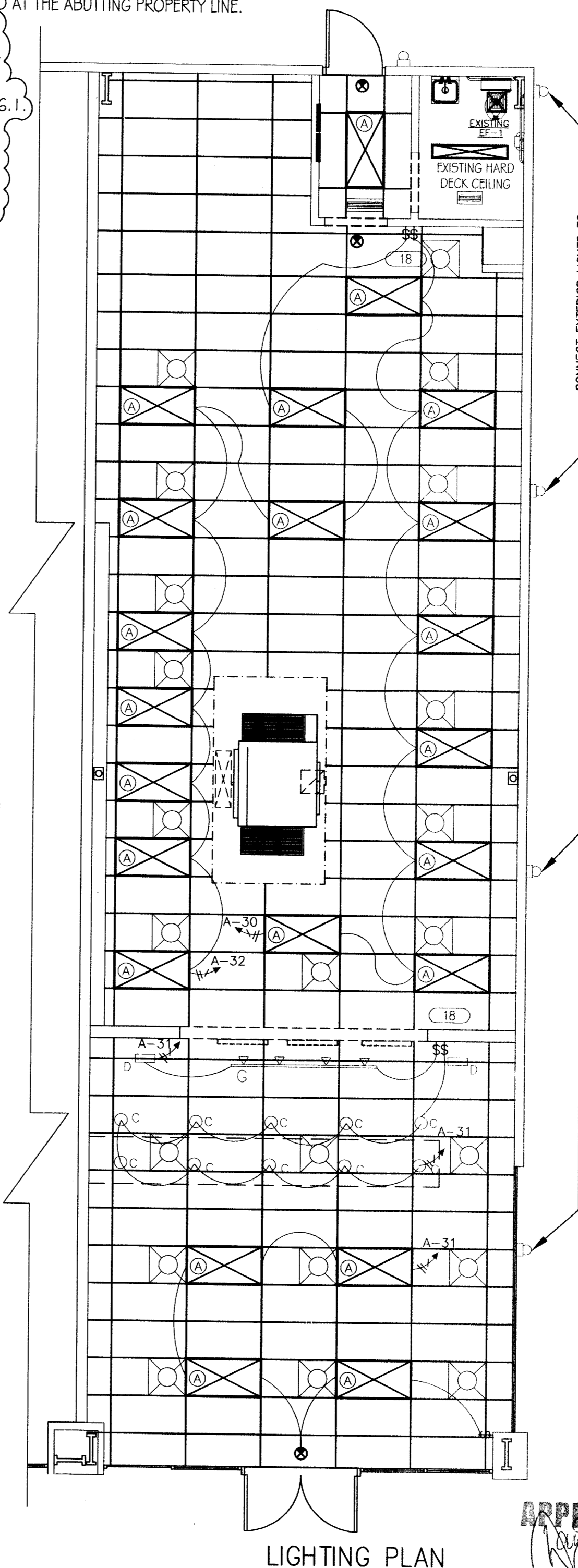
ELECTRICAL NOTES:

- ALL WORK SHALL CONFORM TO THE LATEST EDITION OF THE NATIONAL ELECTRICAL CODE, THE GOVERNING ELECTRICAL CODE, AND ALL OTHER INSPECTION DEPARTMENTS HAVING JURISDICTION. OBTAIN CERTIFICATES OR APPROVAL WHERE REQUIRED.
- ALL MATERIALS FURNISHED SHALL BE NEW AND SHALL BE U.L. LISTED.
- THE DRAWINGS INDICATE SIZE AND GENERAL LOCATION OF WORK. SCALE DIMENSIONS SHALL NOT BE USED. THE EXACT LOCATION AND ELEVATION OF ALL LIGHTING FIXTURES, RECEPTACLES AND TELEPHONE OUTLETS, ETC. SHALL BE DETERMINED BY ACTUAL CONDITIONS IN THE FIELD, UNLESS NOTED OTHERWISE.
- PRIOR TO BIDDING, CONTRACTOR SHALL VISIT THE JOB SITE AND FAMILIARIZE THEMSELVES WITH THE EXISTING CONDITIONS.
- ELECTRICAL CONTRACTOR SHALL COORDINATE HIS WORK WITH OTHER TRADES AND WITH OTHER CONTRACTORS WHOSE WORK MAY AFFECT THIS INSTALLATION.
- ELECTRICAL CONTRACTOR SHALL COORDINATE INCOMING ELECTRICAL SERVICE WITH UTILITY COMPANY AND INCLUDE IN HIS BID ALL CHARGES AND FEES INCURRED IN MODIFICATIONS.
- WHERE MORE THAN ONE SWITCH OCCURS IN THE SAME LOCATION, THEY SHALL BE INSTALLED IN A GANG TYPE BOX UNDER ONE COVER PLATE.
- ELECTRICAL CONTRACTOR SHALL COORDINATE THE TELEPHONE INSTALLATION WITH THE TELEPHONE COMPANY AND THE GENERAL CONTRACTOR.
- ELECTRICAL CONTRACTOR, BEFORE INSTALLING ANY OF THE WORK, SHALL SEE THAT IT DOES NOT INTERFERE WITH CLEARANCES REQUIRED FOR FINISHED COLUMNS, HUNG CEILING, PLASTER, PARTITIONS, WALLS, ETC. AS SHOWN IN THE ARCHITECTURAL DRAWINGS AND DETAILS. IF ANY WORK IS INSTALLED AND IT LATER DEVELOPS THAT SUCH DETAILS OR DESIGN CANNOT BE FOLLOWED, THE CONTRACTOR, AT HIS OWN EXPENSE, SHALL MAKE SUCH CHANGES IN THE WORK AS DIRECTED BY THE ARCHITECT. AS WELL AS TO PERMIT THE INSTALLATION OF THE ARCHITECTURAL WORK AS SHOWN ON THE PLANS AND DETAILS.
- PERFORM TEST REQUIRED BY THE OWNER OR THE ENGINEER IN CONNECTION WITH THE OPERATION OF THE ELECTRICAL SYSTEM IN THE BUILDING.
- ALL TESTS SHALL BE MADE IN ACCORDANCE WITH THE LATEST STANDARD OF THE IEEE AND THE NATIONAL ELECTRICAL CODE.
- MINIMUM CONDUCTOR SIZE SHALL BE #12, 600V INSULATION. MINIMUM SIZE CONDUIT SHALL BE 3/4" EMT FOR INTERIOR USE, AND 3/4" RIGID ALUMINUM FOR EXTERIOR USE. EXTERIOR FITTINGS SHALL BE CAST BOXES AND COVERS. INTERIOR FITTINGS SHALL BE CAST WHERE EXPOSED ON WALLS. STAMPED BOXES MAY BE USED ABOVE CEILING IN AIR CONDITIONED SPACES.
- CONTRACTOR SHALL INSTALL WIRING AND OTHER CIRCUIT COMPONENTS TO MATCH EQUIPMENT ACTUALLY INSTALLED.
- INSTALL GROUND FAULT RECEPTACLES AT RECEPTACLE LOCATIONS WITHIN 5' OF SINKS OR LAVATORIES, AND AT EXTERIOR LOCATIONS. EXTERIOR RECEPTACLES SHALL ALSO BE WEATHERPROOF. ALL RECEPTACLES IN THE SERVING LINE AREA WILL BE GFI WITH A 5 MILLIAMP TRIP THRESHOLD.
- BONDING AND GROUNDING SHALL BE IN ACCORDANCE WITH NFPA 70:230-63, NFPA 250-23, 250-71, & 250-72.
- GROUND NEUTRAL IN ACCORDANCE WITH NFPA 70:250-23b.
- FUSES SHALL BE ITT CLASS K5, 250 VOLT, 200,000 AMP INTERRUPTING CAP.
- PROVIDE SERVICES OF A FIRE/SMOKE DETECTION & ALARM COMPANY TO DESIGN & INSTALL ALARM SYSTEM TO MEET REQUIREMENTS OF THE STATE FIRE MARSHALL.
- ALL ELECTRICAL, MECHANICAL & PLUMBING PENETRATING FIRE PARTITIONS SHALL BE FIRE CAULKED. (PENETRATIONS THROUGH RATED CONSTRUCTION SHALL BE SEALED WITH A MATERIAL CAPABLE OF PREVENTING THE PASSAGE OF FLAMES AND HOT GASES WHEN TESTED IN ACCORDANCE WITH ASTM-E814.)
- EXTERIOR LIGHTING SHALL BE SHADED OR INWARDLY DIRECTED IN SUCH A MANNER SO THAT NO DIRECT LIGHTING OR GLARE IS CAST BEYOND THE PROPERTY LINE. THE INTENSITY OF SUCH LIGHTING SHALL NOT EXCEED ONE FOOT CANDLE AS MEASURED AT THE ABUTTING PROPERTY LINE.
- SEE GENERAL NOTES E-2.
- ELECTRICAL CONTRACTOR SHALL INSTALL A WEATHERPROOF ELECTRICAL RECEPTACLE WITHIN 25 FEET OF EXTERIOR AIR-CONDITIONING EQUIPMENT IAW NEC 210.63.
- ELECTRICAL CONTRACTOR SHALL INSTALL EGRESS LIGHTING IAW NEC 1006.1



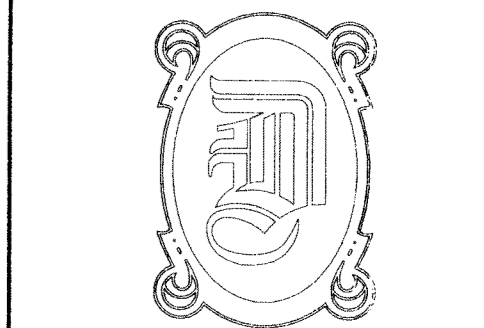
POWER PLAN
SCALE: 3/16" = 1'-0"

MARK	DESCRIPTION	LAMP	MODEL NO.	MANUF.
A	2X4 LAY-IN FLOURESCENT (18 EXISTING/RELOCATED)	(3) F32-T8 3500K	2SP-G-3-32-FW-A12125-120-GEB	LITHONIA
B	CEILING RECESSED COMPACT W/ EYEBALL TRIM; FLOURESCENT	(1) F42TRT 4100K 82CRI	LP6F-1/42TRT 6L4	LITHONIA
C	CEILING RECESSED COMPACT FLOURESCENT DOWNLIGHT	(1) F42TRT 4100K 82CRI	LP6F-1/42TRT 6L4	LITHONIA
D	CEILING RECESSED COMPACT FLOURESCENT WALL WASHER	(1) CF40 BX 4100K 82CRI	WWG/CF40-120 1RLD GEB	LITHONIA
E	EMERGENCY DUAL LAMP W/BATTERY BACK-UP, INSTALL 84" A.F.F.	EXISTING	EXISTING	EXISTING
F	EMERGENCY DUAL LAMP EXIT LIGHT W/BATTERY BACK-UP	EXISTING	EXISTING	EXISTING
G	L78-DBL -- SURFACE TRACK LIGHT B' BLACK FINISH, ELECTRONIC BALLAS	(4) 35W METAL HALIDE	LTD-LPHR-35M-20-HEB-DBL-LPFL	LITHONIA
H	WALL PACK 70 WATT PULSE START	70W METAL HALIDE	E-WPDM07QZ	



LIGHTING PLAN
SCALE: 3/16" = 1'-0"

APPROVED



DAMMON ENGINEERING, INC.
EMMETT DAMMON

ARCHITECT
ROBERT WILTSE

1095 FLORIDA AVENUE
SLIDELL, LA. 70458
985-649-5832

WEBSITE:
WWW.DAMMONENGINEERING.COM

EMAIL:
DAMMONENG@BELLSOUTH.NET

- ARCHITECTURE
- ENGINEERING
- STUDIES
- PLANNING
- INVESTIGATION
- EXPERT WITNESS

MARCO'S PIZZA TENANT BUILDOUT

4638 Hwy. 22
Mandeville
Louisiana
70471-2820

ELECTRICAL PLAN

REV: #1 6/15/2011

SCALE: AS NOTED

JOB#: 2107

DATE: 5-25-11

SHEET 8

E-1

OF 11