

DAMMON
ENGINEERING, INC.
CHIEF ENGINEER
EMMETT
DAMMON, P.E.
CHIEF ARCHITECT
ROBERT
WILTSE

554 OLD SPANISH TRAIL
SLIDELL, LA, 70456
OFFICE: 985-649-5632
FAX: 985-641-5950

WEBSITE:
WWW.DAMMONENGINEERING.COM
EMAIL:
DAMMONENR@DRELSOUTH.NET

ARCHITECTURE
ENGINEERING
STUDIES
PLANNING
INVESTIGATION
EXPERT WITNESSES

MARCOS
PIZZA
TENANT
BUILDOUT

9212 WEST
JUDGE PEREZ DR.
CHALMETTE, LA

FINISHES / CEILING
PLAN

REV:

SCALE: AS NOTED

JOB#: 2126

DATE: 12-08-11

SHEET 4

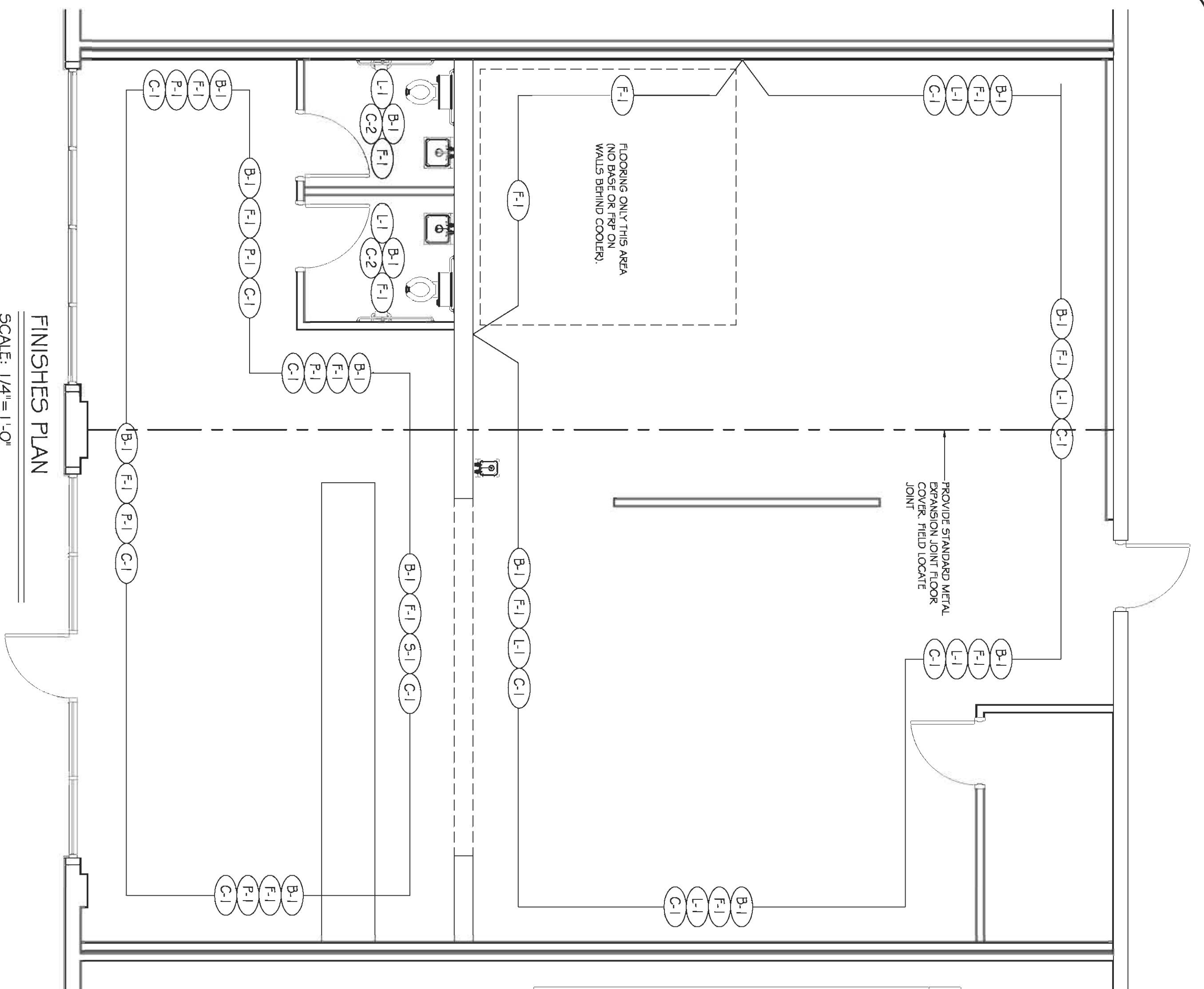
A-3

OF 11

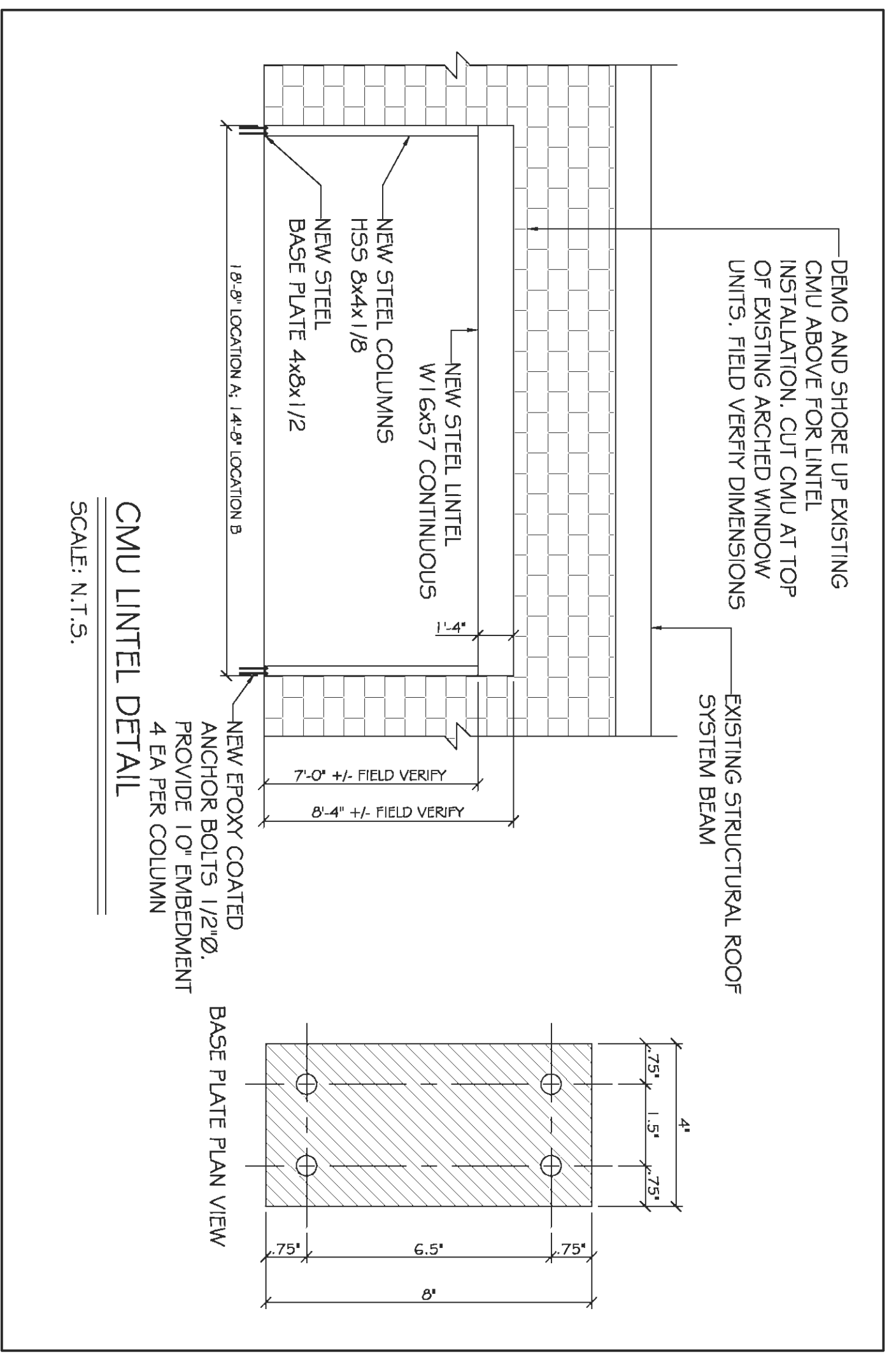
- ### ROOM FINISH SPECIFICATIONS
1. ALL WALLS TO RECEIVE FRP[®] PANELS FROM FLOOR TO CEILING EXCEPT IN THE DINING AREA. INSTALL FRP WITH ALL TRIM AND ACCESSORIES TO BE INSTALLED PER MANUFACTURER'S INSTRUCTIONS. PANELS TO BE MANUFACTURED BY MARULTE CORPORATION TO BE WORK (P-140)
 2. CEILING SHALL BE WASHABLE. HARD SURFACE VINYL FACED 24"X24" LAY-IN ACOUSTIC PANELS IN "STIPPLE" FINISH WITH NEW WHITE ALUMINUM T[®] GRID SYSTEM.
 3. ALL DOORS, FRAMES AND WOOD TRIM SHALL BE PAINTED TWO COATS OF "SHERWIN WILLIAMS 6119 'ANTIQUE WHITE'.
 4. ALL EXPOSED PARTITION ENDS AND CORNERS SHALL HAVE 5" STAINLESS STEEL CORNERS TO FLOOR. (NOT TOP OF COVE.)

FINISH SCHEDULE

(1)	LOOK TILE: INTERCRACK, FLAGSTONE SERIES, CORINTHIAN (123X123); GROUT TO MATCH IMPROVMENT, 'DASHWEE-HI-79'
(2)	BASE TILE: INTERCRACK, FLAGSTONE SERIES, CORINTHIAN (6X6X2); SURFACE BULL NOSE TILE. GROUT TO MATCH IMPROVMENT, 'DASHWEE-HI-79'
(3)	CEILING TILE: VINYL FACED 24" X 24" GYP BOARD PANELS IN 1/2" WHITE COMMERCIAL GRADE GYP WITH STIPPLE FINISH.
(4)	GYP BOARD: PAINTED GYP BOARD
(5)	WALL PAINT: OVER TEXTURED DRYWALL - 'POKTER PAINTS #6700-2'
(6)	STONE VENEER: OWENS CORNING STONE - COUNTRY LEDGE STONE - COLOR: CARVEL. SEALS AS REQUIRED TO MEET LOCAL HEALTH DEPARTMENT APPROVAL.
(7)	FOR FINISHES, INFORMATIONAL IN BASE CONTRACT.
(8)	WALL LAMINATE: CONSULT MARCOS CO. UTILITY WORK FOR MOST CURRENT PRODUCT SHEETS.
(9)	WALL LAMINATE: COORDINATE WITH MARCOS CORPORATE. MARUL REQUIRES A 1/2" WOOD OR DRYWALL SUBSTRATE AND NO CLASS 5 FLAME SPREAD. ALL INTERIOR WALL AND CEILING FINISHES TO CONFORM TO IBC 2006 SECTION 909 CLASS A FLAME SPREAD AND 901M T-54.

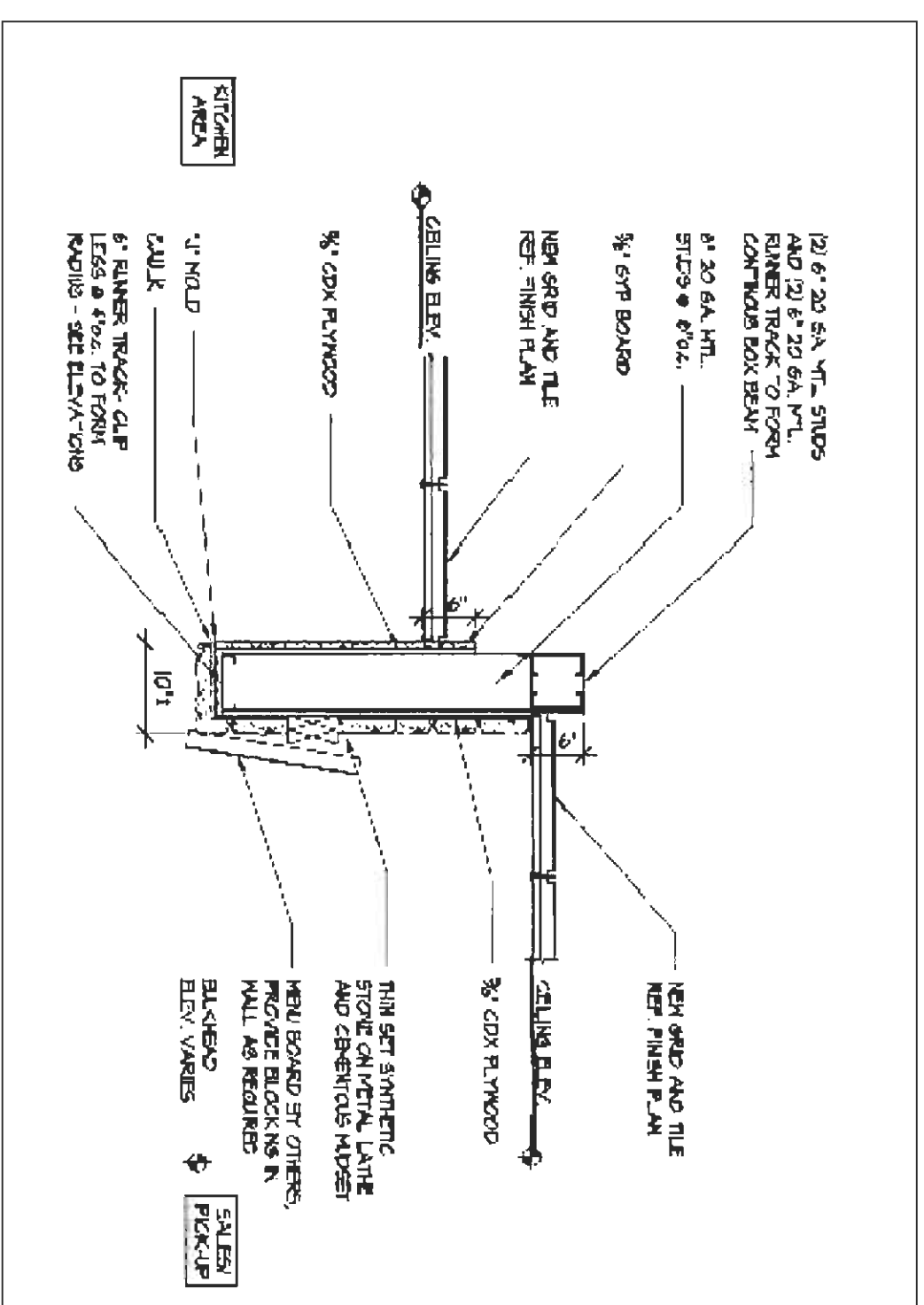


FINISHES PLAN
SCALE: 1/4" = 1'-0"

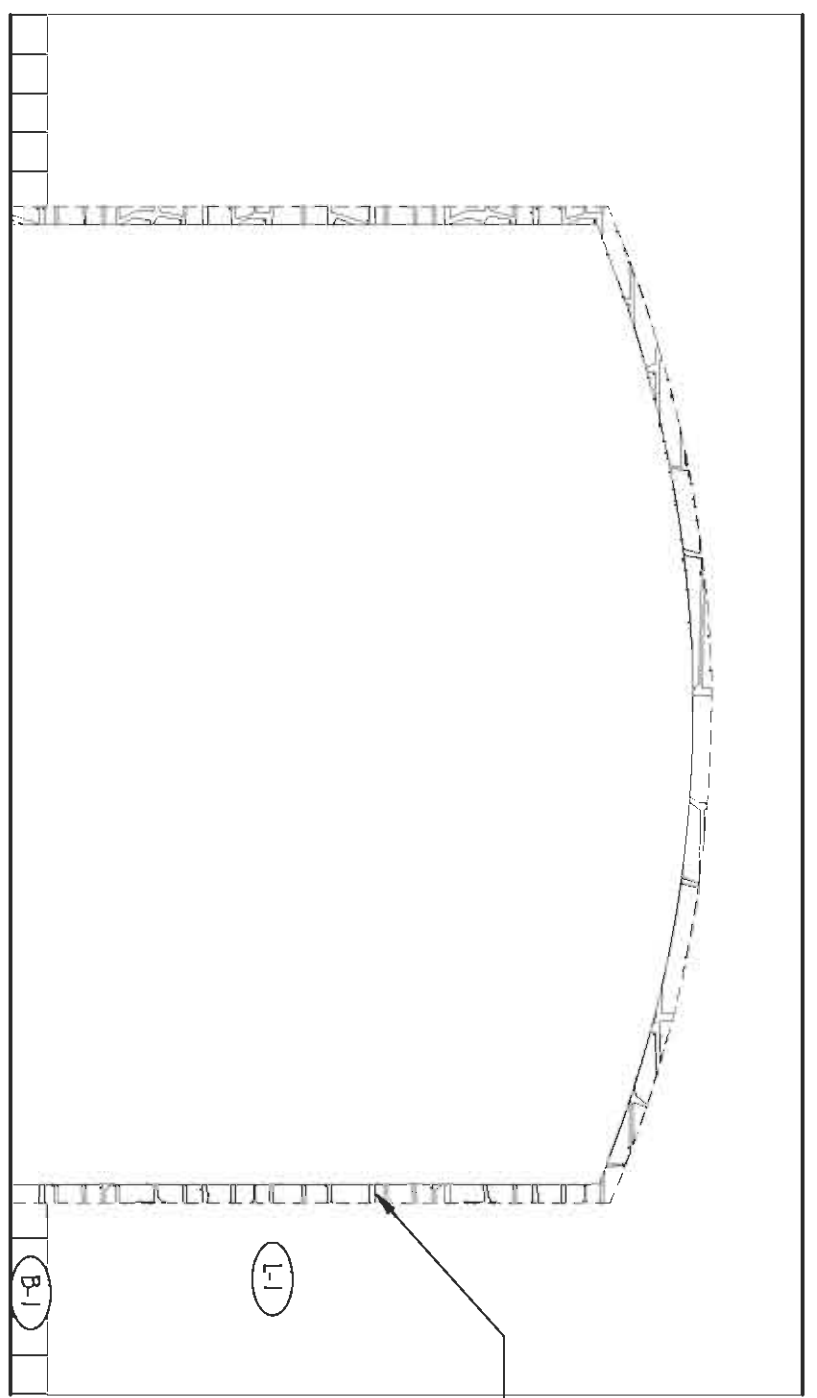


CMU UNTEL DETAIL
SCALE: N.T.S.

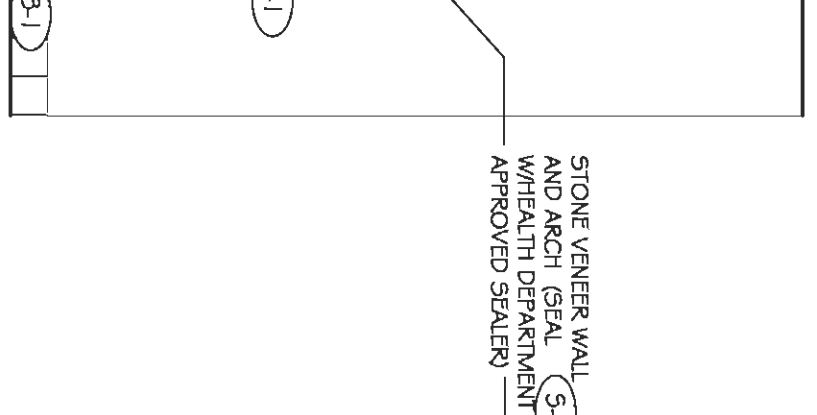
GA FILE NO. WP 1521 GENERIC
GYP/UM WALLBOARD, STEEL STUDS
BASE LAYER 5/8" TYPE V GYP/UM WALLBOARD OR GYP/UM WALLBOARD. PARALLEL TO GYP/UM BOARD OR 3/8" STEEL STUDS 24" O.C. WITH 1" TYPE 5 DRYWALL SCORING 24" O.C. FACE LAYER 1/2" TYPE X GYP/UM WALLBOARD OR GYP/UM VENER. TYPE 5 DRYWALL SCORING 12" O.C.
JOINTS STAPLED 24" R.F.P. LAYER AND GYP/UM SOUND TESTED WITH 3 1/2" GAUSS 1000 FREQ. SOUND TEST. (N.B.)
UIC 607-199, 3-26-01
UIC 97-641
UIC DESIGN W4 14
NRC-01-5347, 25-80



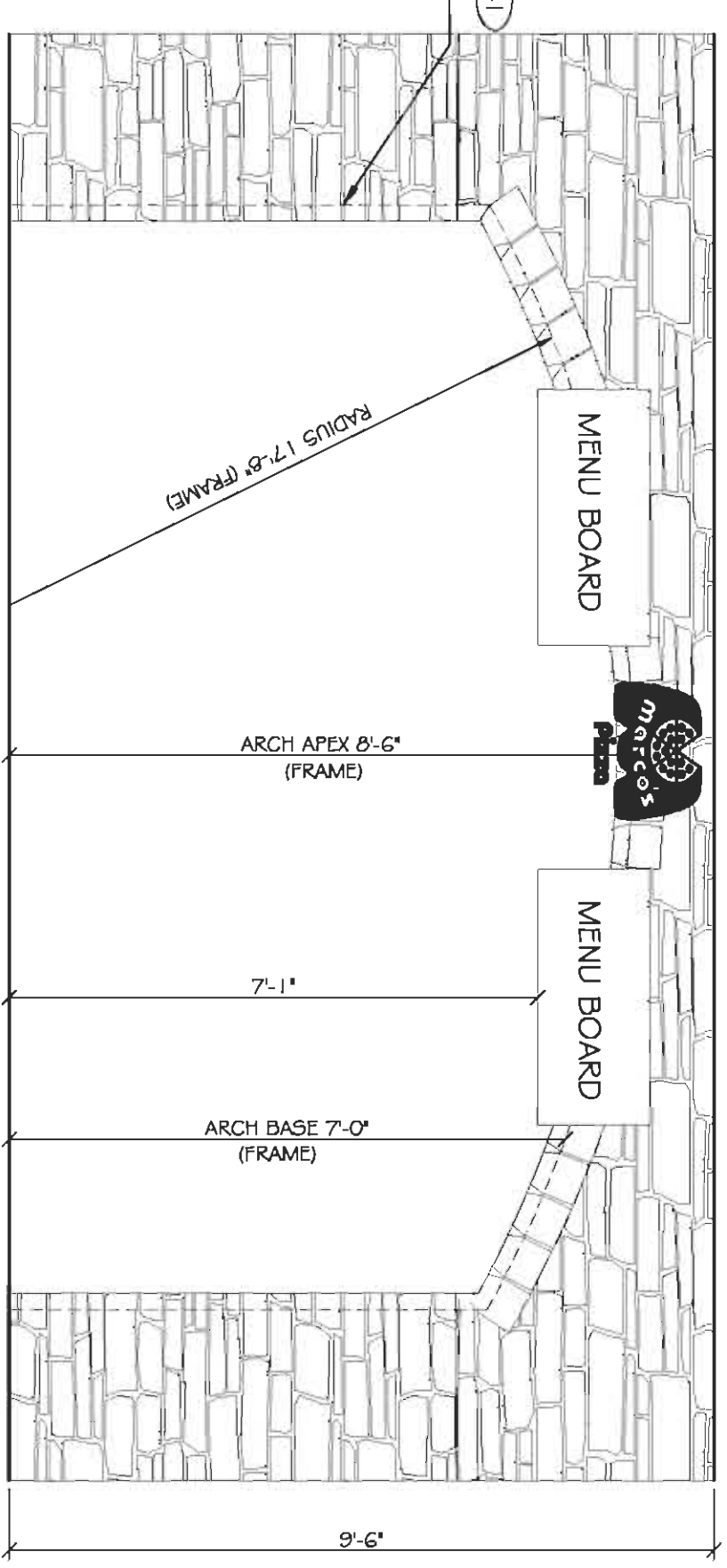
STONE VENEER SECTION
SCALE: 1/4" = 1'-0"



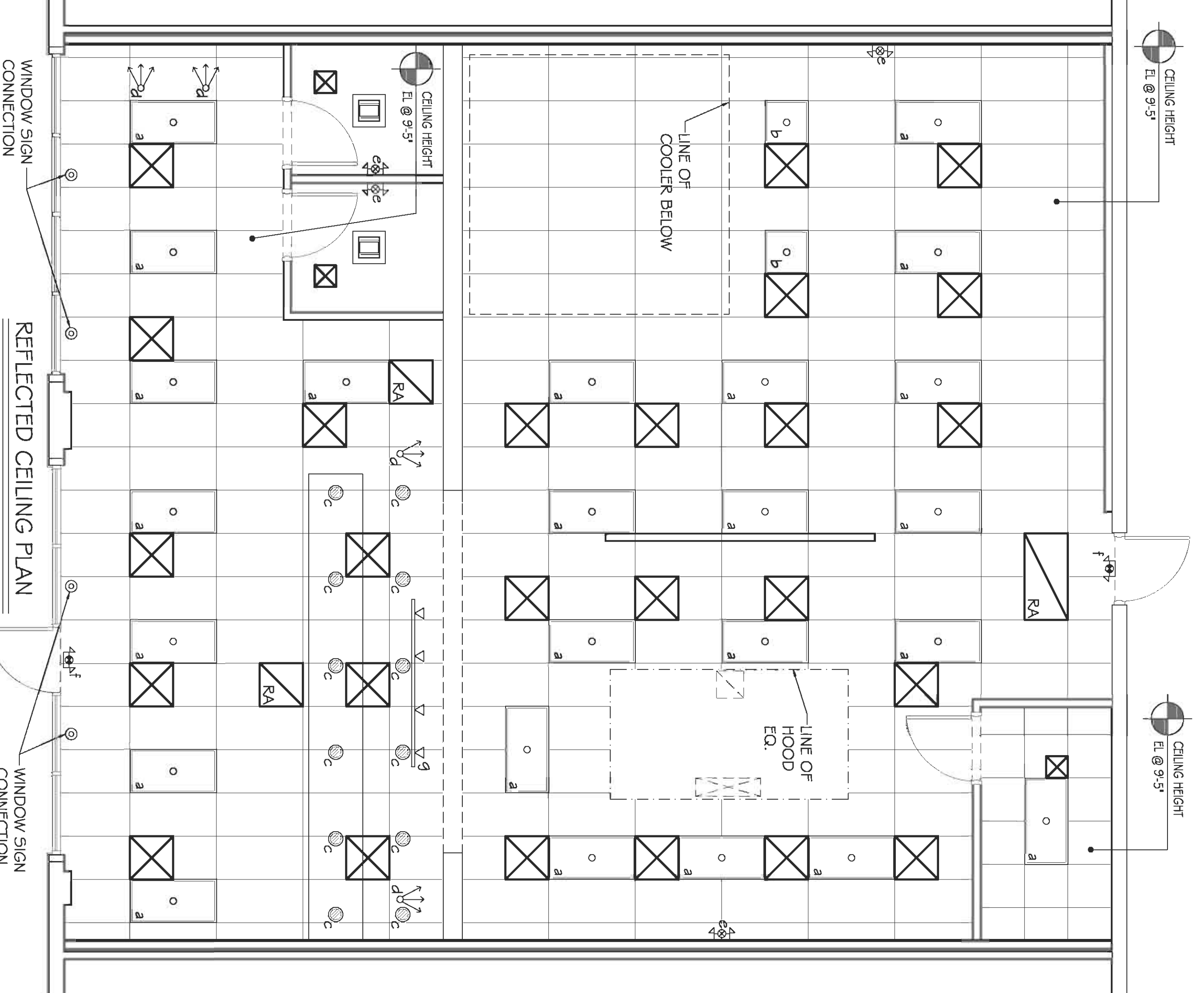
KITCHEN SIDE ELEVATION



STONE VENEER
SCALE: 1/4" = 1'-0"



DINING ROOM SIDE ELEVATION

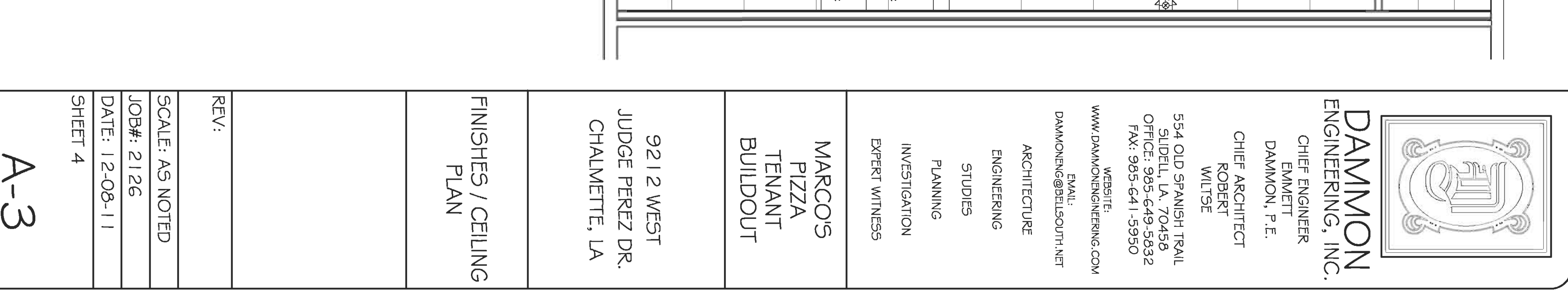


REFLECTED CEILING PLAN
SCALE: 1/4" = 1'-0"

LIGHT FIXTURE SCHEDULE

MARK	DESCRIPTION	LAMP	MODEL NO.	MANUF.
A	2X4 LAY-IN FLUORESCENT	(3) F32-T8 3500K	259-G3-32-T8-3500K	UTRHONIA
B	2X4 LAY-IN FLUORESCENT WITH ELECTRONIC BALLAST	(1) F42TRI 3000K	A12-23-12-3000-L330H16	UTRHONIA
C	CEILING RECESSED COMPACT FLOURESCENT DOWNLIGHT	(1) OF-40 BX 4100K 82CR	WGCFC40-120	UTRHONIA
D	CEILING RECESSED COMPACT FLOURESCENT WALL WASHER	180D 82CR	ELM2	UTRHONIA
E	EMERGENCY DUAL LAMP W/BATTERY BACK-UP	HIT 5-4W	H05WV1 R120277	UTRHONIA
F	EMERGENCY DUAL LAMP EXIT LIGHT W/BATTERY BACK-UP	2 - 5-4W AC, 6V DC	LTD-LTRK-35W-20-HB-08-LPL	UTRHONIA
G	18" DBL. SURFACE TRACK LIGHT Ø BLACK FINISH, ELECTRONIC BALLAST	(4) 35W METAL HALIDE	LTD-LTRK-35W-20-HB-08-LPL	UTRHONIA

LIGHT FIXTURE SCHEDULE
SCALE: 1/4" = 1'-0"



STONE VENEER
SCALE: 1/4" = 1'-0"