

Store #12418
Approved with Changes
8-19-08

Richard Steyner

Bag-n-box must be shown 6" from wall to allow for pumps and hoses.

INSTALL ELECTRICAL FOR OPTIONAL 3rd #11 WARMER.
INSTALL ELECTRICAL FOR OPTIONAL #70 SANDWICH TABLE.

EXTERIOR TOP MOUNT COMPRESSORS.

P.O.S. MANAGER'S DESK AREA

NEW ELECTRIC PANEL

THE 4'-0" RETURN IS NEEDED FOR 3'-0" CLEARANCE ON TOASTER WHEN USING OPTIONAL SANDWICH TABLE #70.

WALK WAY

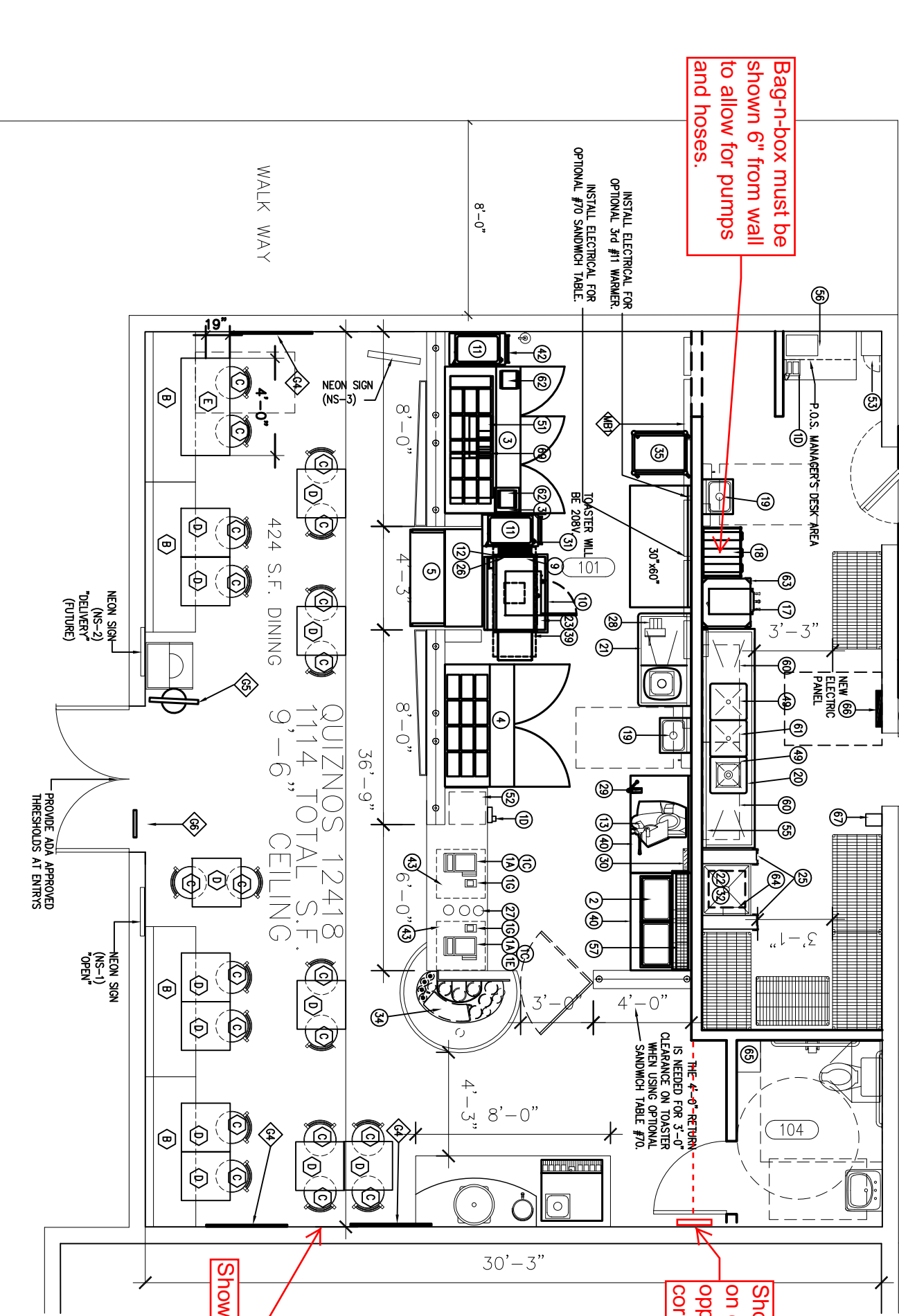
424 S.F. DINING

QUINZOS 12418
1114 TOTAL S.F.
9'-6" CEILING

NEON SIGN (NS-2) "DELIVERY" (FUTURE)

NEON SIGN (NS-1) "OPEN"

PROVIDE ADA APPROVED THRESHOLDS AT ENTRIES



Show sconce

Show plaster on center with opposite corner.