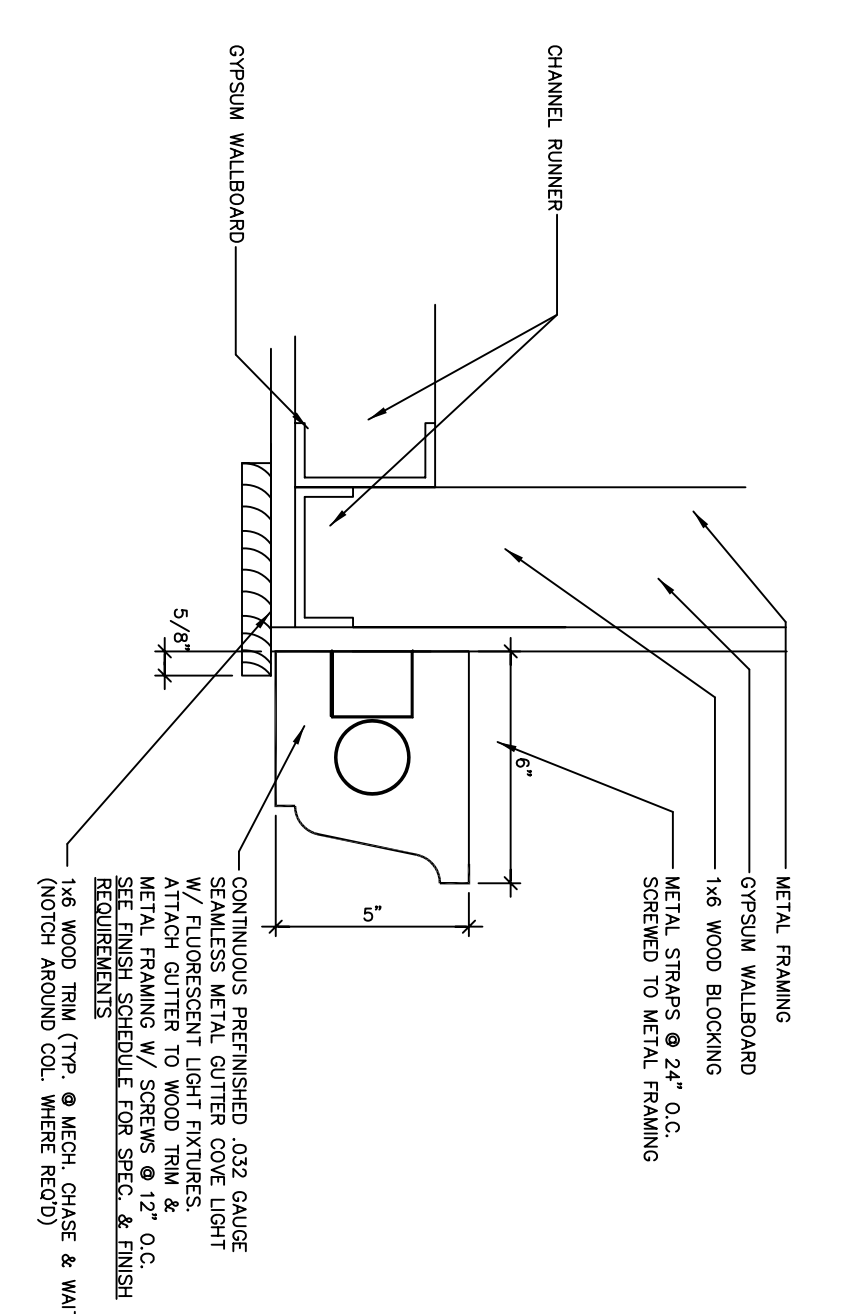
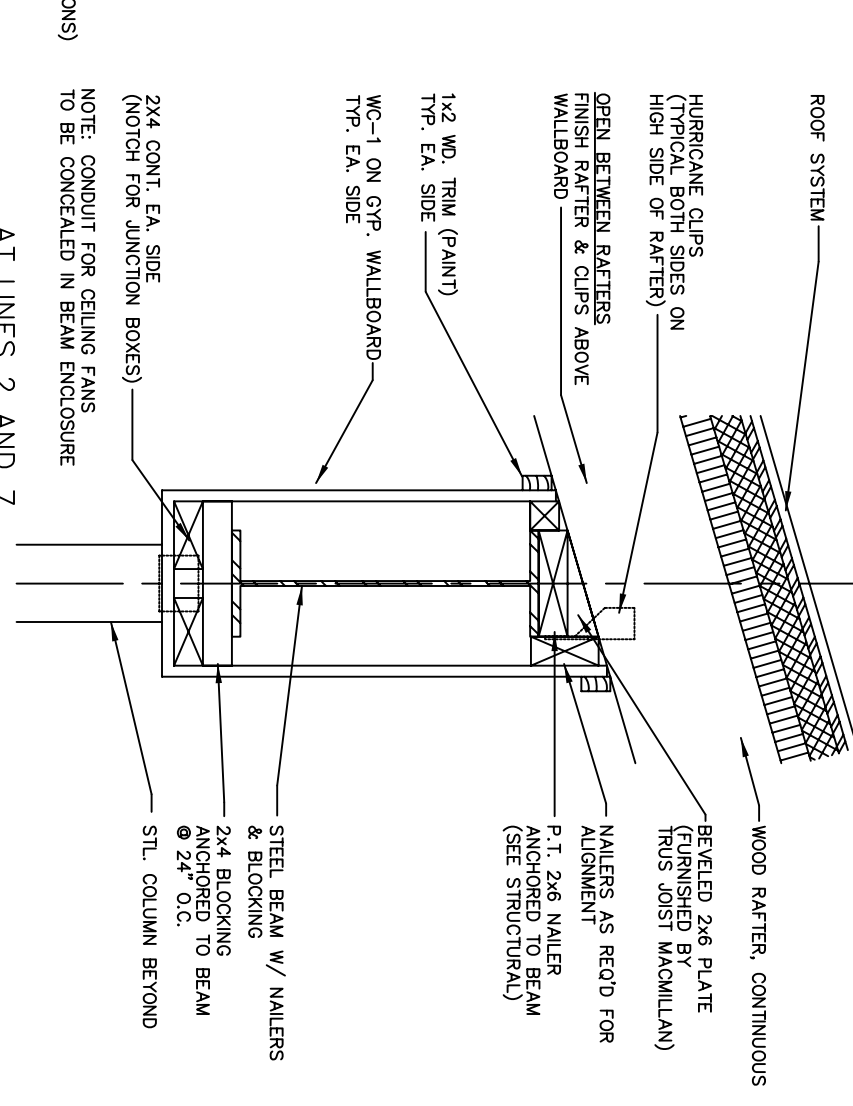


GENERAL NOTES:

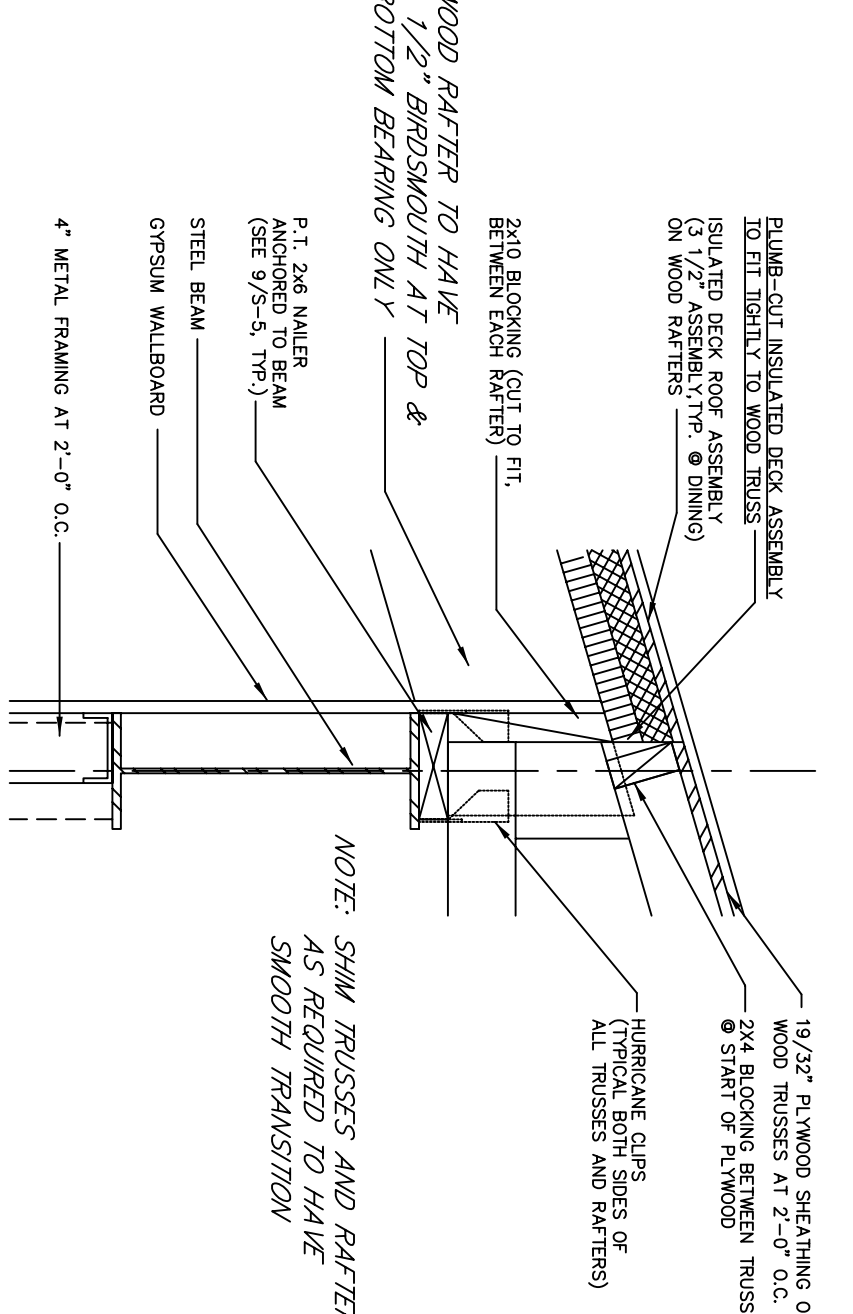
1. FOLLOW ROOM FINISH SCHEDULE FOR WALL FINISHES.
2. INTERIOR RAYWOOD SHEATHING SHALL BE 15/32" UNLESS NOTED OTHERWISE.
3. EXTERIOR POLYSTYRENE BOARD INSULATION INDICATED SIZE OF BEAM ONLY. IF INSULATION PROTECTION IS REQUIRED FOR WALLS, 1/4" RAYWOOD, 1 1/2" MINERAL FIBER INSULATION, ON 1/4" PARTICLE BOARD.



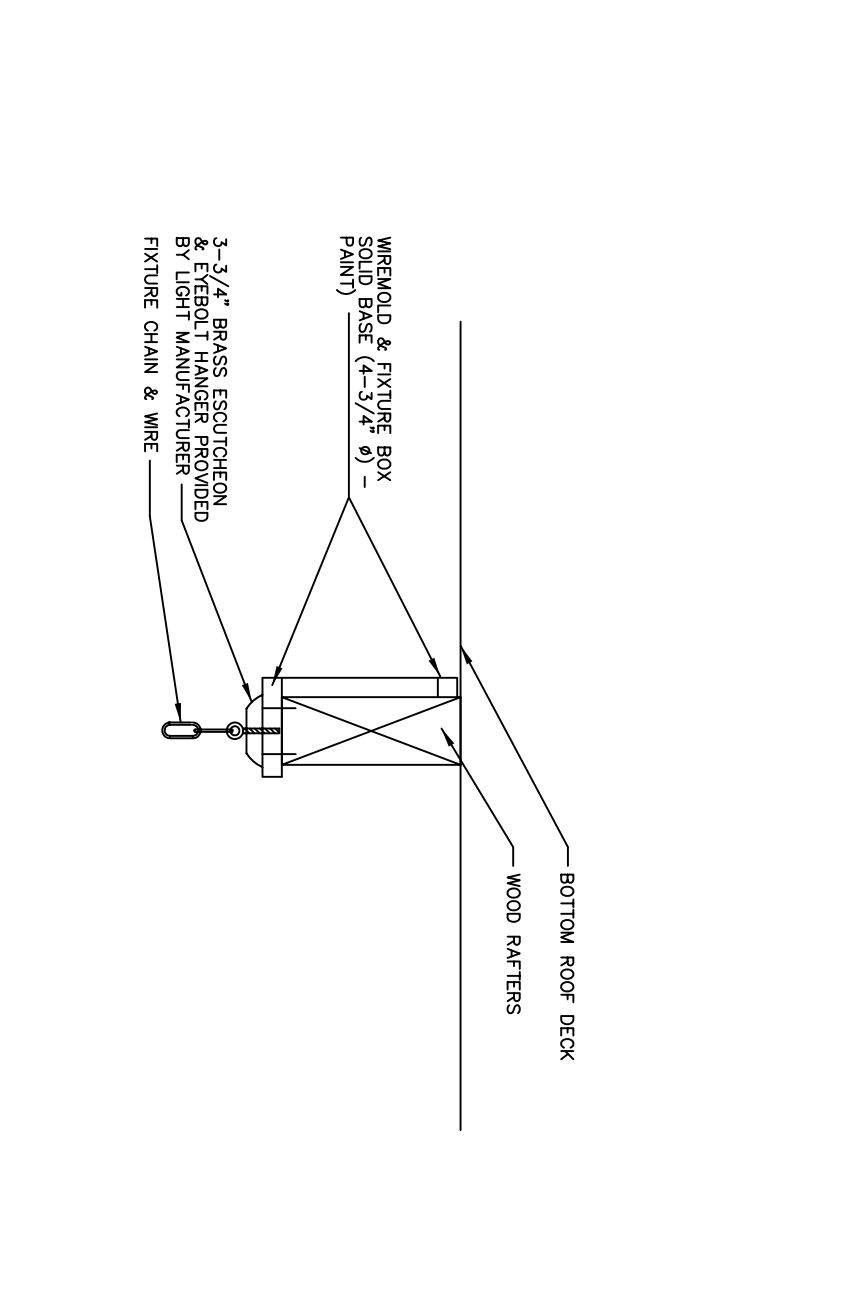
4 COVE LIGHT TRIM DETAIL
A-9 SCALE: 3/4" = 1'-0"



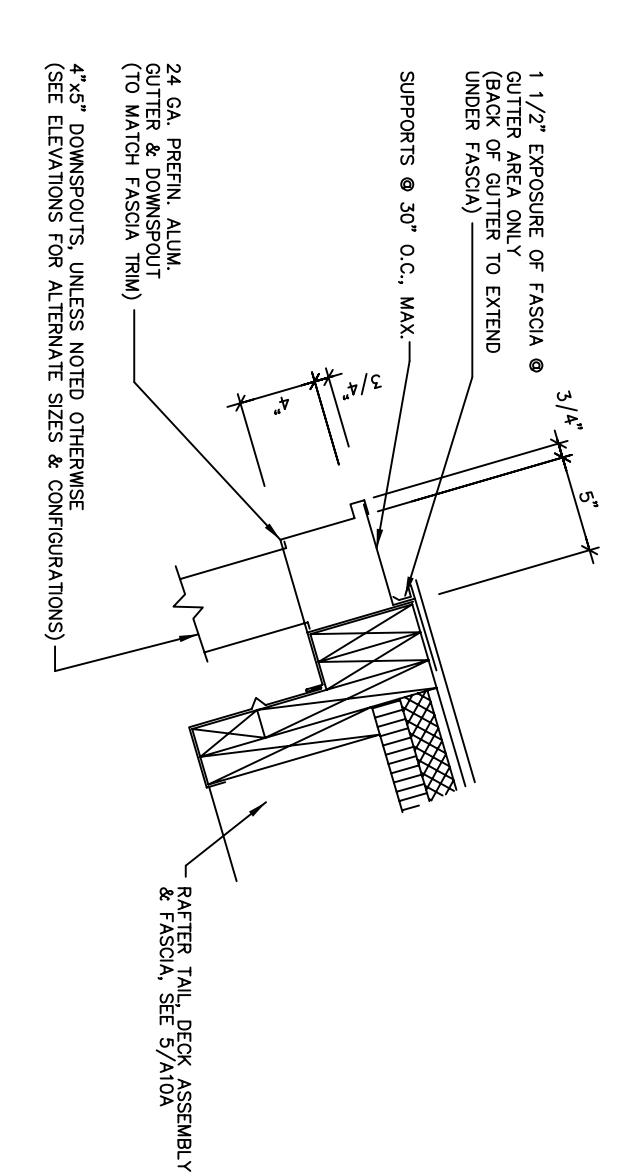
5 BEAM DETAIL @ DINING
A-9 SCALE: 1 1/2" = 1'-0"



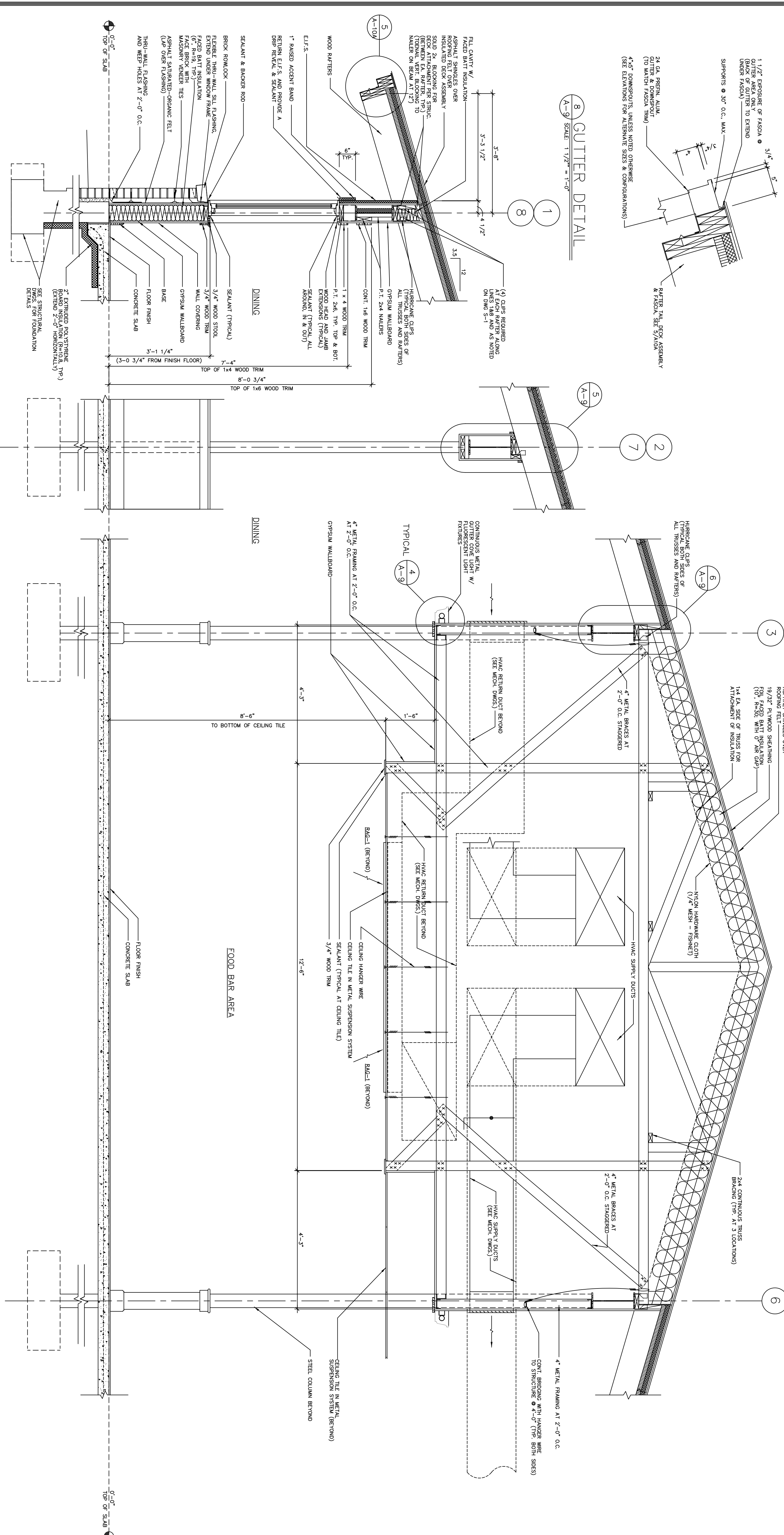
6 BEAM DETAIL @ CHASE
A-9 SCALE: 1 1/2" = 1'-0"



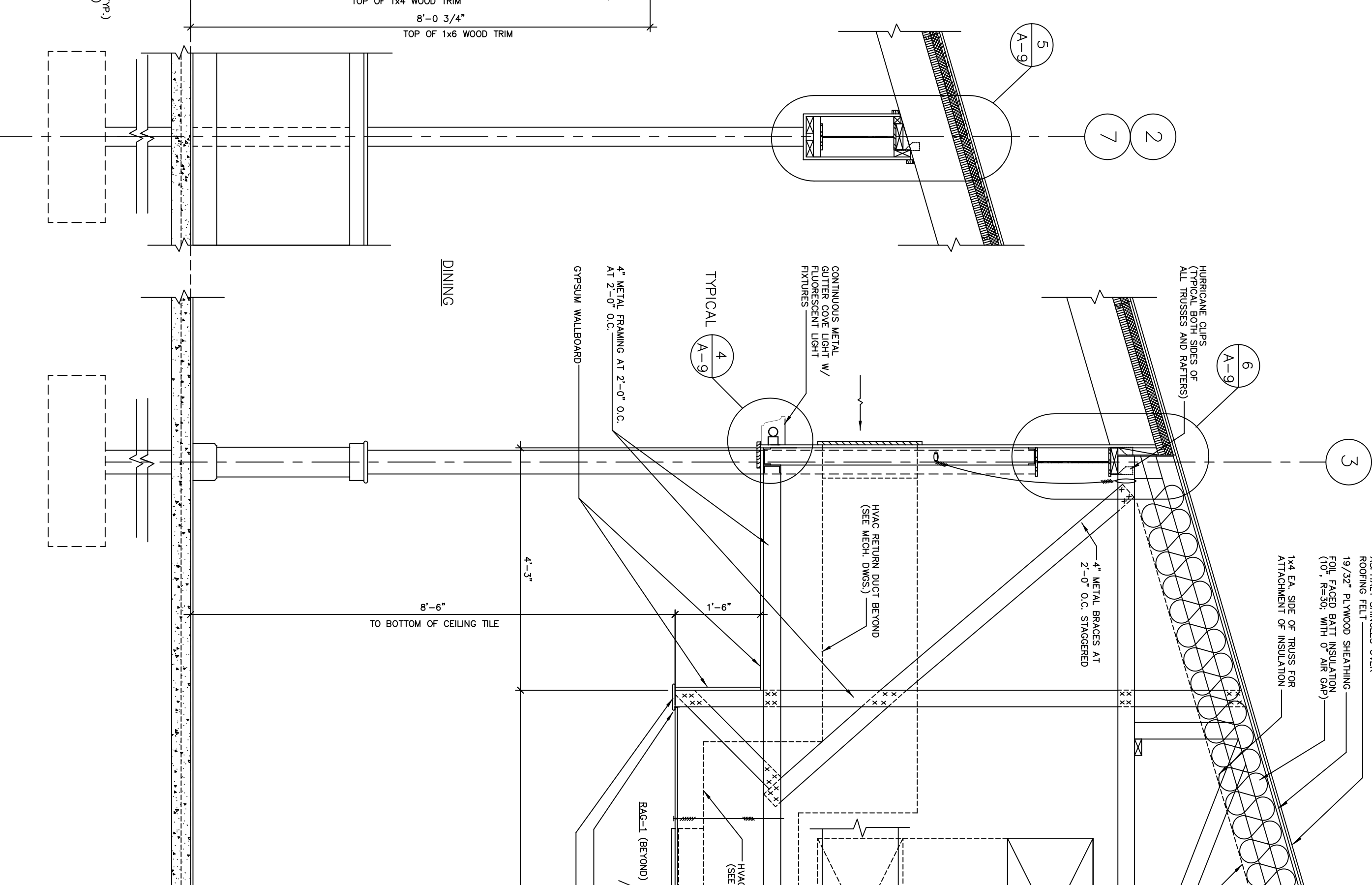
7 PENDANT LIGHT MOUNTING DETAIL
A-9 SCALE: 1-1/2" = 1'-0"



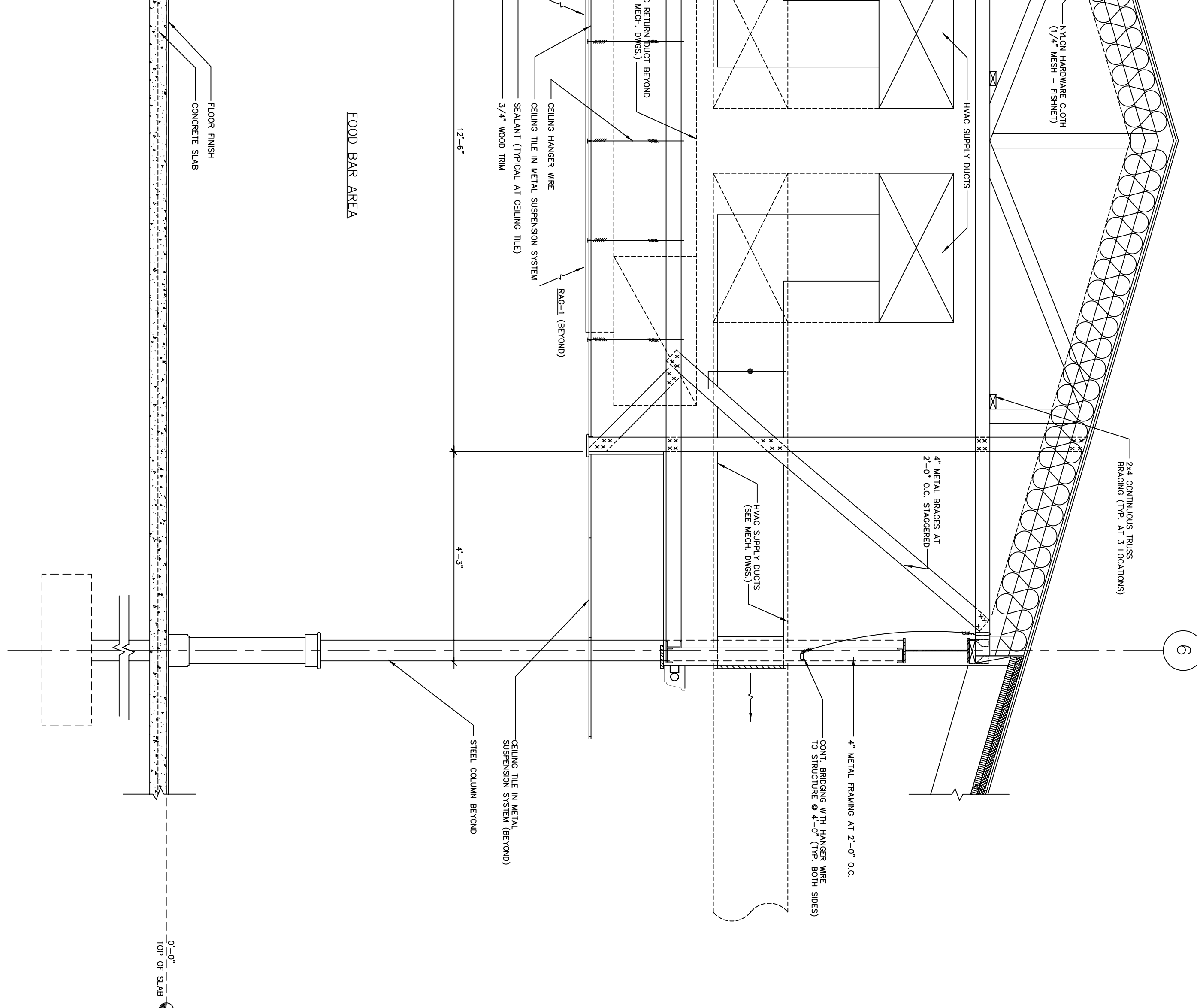
8 GUTTER DETAIL
A-9 SCALE: 1 1/2" = 1'-0"



1 WALL SECTION
A-9 SCALE: 3/4" = 1'-0"



2 WALL SECTION
A-9 SCALE: 3/4" = 1'-0"



3 WALL SECTION
A-9 SCALE: 3/4" = 1'-0"

REVISIONS

REV.	DESCRIPTION	DATE	BY

RYAN'S FAMILY STEAK HOUSES, INC.
199 WEST CENTER - DENVER, CO. 80202 - (303) 733-0000

Ryan's
FAMILY STEAK HOUSE

WALL SECTIONS
DINING