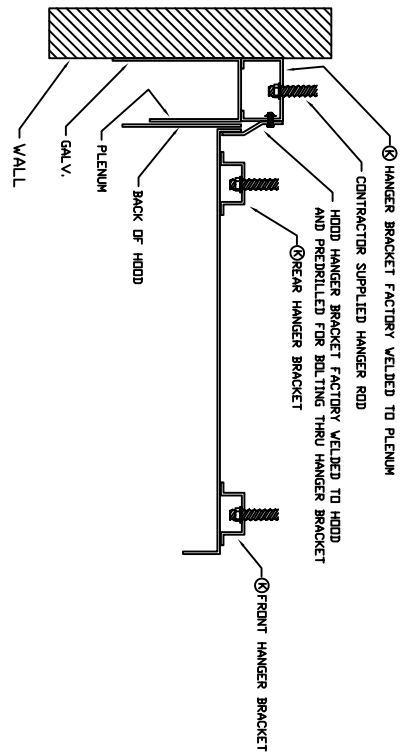
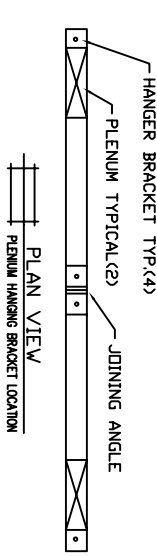
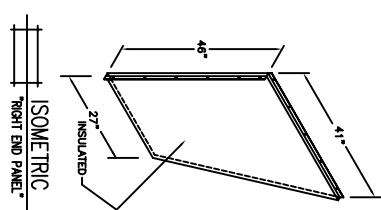
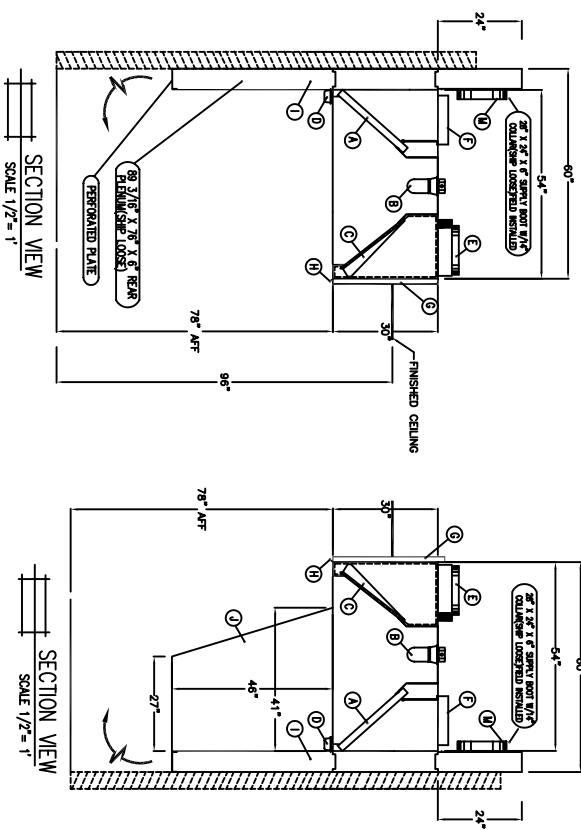
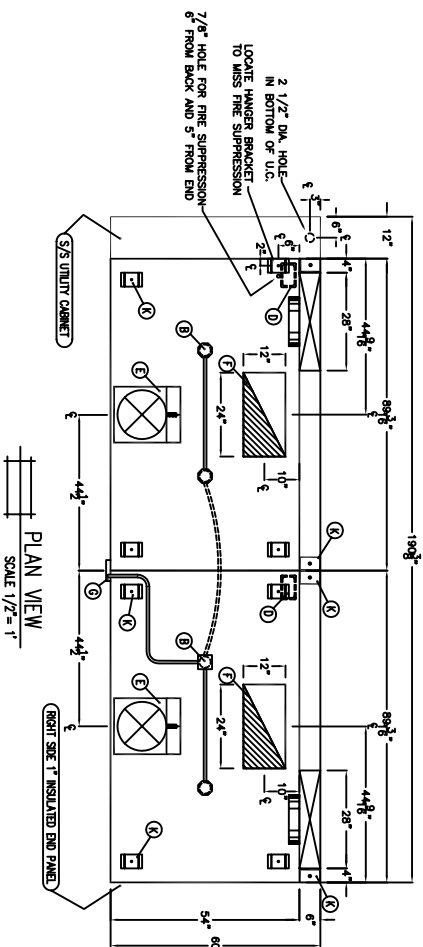
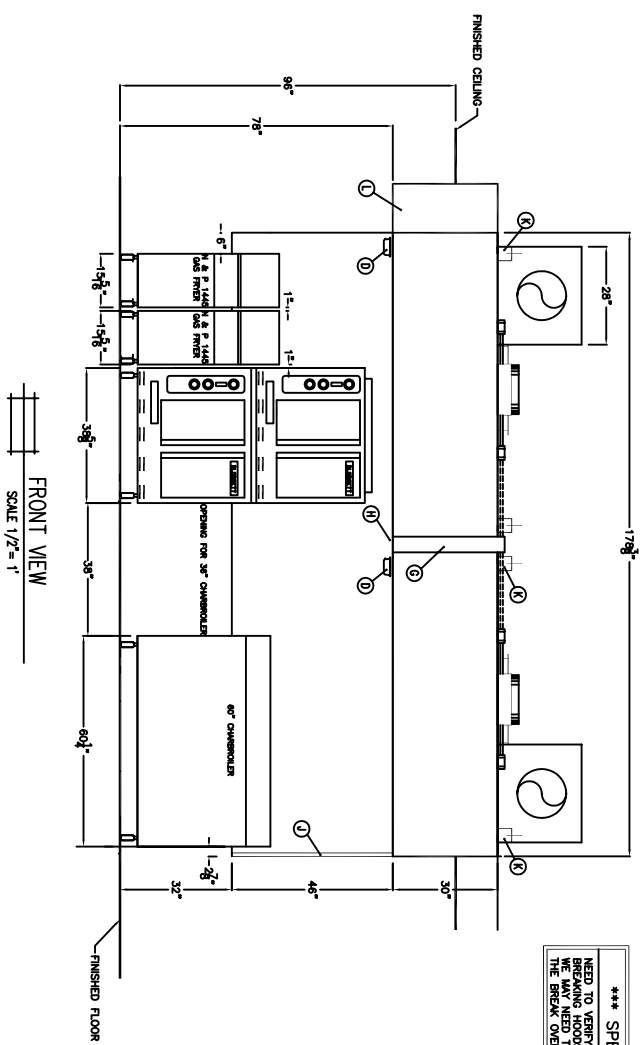


*** SPECIAL NOTE ***
 NEED TO VERIFY WITH LOCAL CODES ON
 BREAKING HOODS OVER CHAMBERLAIN
 THE BREAK OVER OWENS.



SPECIFICATIONS

MATERIAL: 18 GA. TYPE 304 S/S.

ACCESSORIES: 20" x 2" TYPE II STAINLESS STEEL GREASE FILTERS
 A: (2) 25" x 20" x 2" TYPE II STAINLESS STEEL GREASE FILTERS
 B: (4) 100 WATT INCANDESCENT LIGHT FIXTURES BOX-LESS BULBS
 C: (8) REMOVABLE PERFORATED ALUM. MUA DIFFUSERS
 D: (2) 5/8" ROUND SUPPLY PINS COLLARS W/FRISBLE LINK FIRE DAMPER
 E: (2) 5/8" ROUND SUPPLY PINS COLLARS W/FRISBLE LINK FIRE DAMPER
 F: (2) EXHAUST DUCT COLLARS WELDED IN TOP OF HOODS
 G: (1) FACTORY INSTALLED VERTICAL WIREWAY
 H: (2) LIGHT CONTROL SWITCHES (1) FOR LIGHTS.
 I: (1) 6" REAR S/S PLENUM/SHIPED LOOSE)
 J: (1) 6" INSULATED S/S END CURTAIN (RIGHT END ONLY)
 K: (1) HANGER BRACKETS
 L: (1) 5/8" UTILITY CABINET
 M: (2) 14" ROUND SUPPLY DUCT COLLARS WITH BOOT(SHIPED LOOSE)

CAPACITIES AND CONNECTIONS

EXHAUST CFM: 6172 SP-460 X 12"
 MUA CFM: 4938 SECTION: 1) 440 ROUND
 E.I. LIGHT CONNECTION: (4) 100 WATT

*** SUBMITTAL ***
 MODEL # EHMUA-54SS-178 3/8
 APPROVED FOR FABRICATION
 APPROVED AS NOTED
 REVERSE & RESUBMIT FOR APPROVAL
 AUTHORIZED SIGNATURE _____ DATE _____



LISTINGS & LABELS:

Hoods Grease Filters #W12914603320
 Hood Light Fixtures U.L. R13192
 Exhaust Fans U.L. E53537

LCSYSTEMS
 COLUMBUS, OH. (614) 228-3976
 PROJECT: RYANS #PT9L HOOD #1
 LOCATION: MASTER PROTOTYPE #9 LEFT HAND
 LG REPRESENTATIVE: GEN III

DATE: 10-3-97 SCALE: 1/2" = 1"
 DRAWING NO. ICS-393-06-01L REVISIONS: 8/5/99 DRAWN BY: RNM/AC
 JOB NO. 1 OF 2