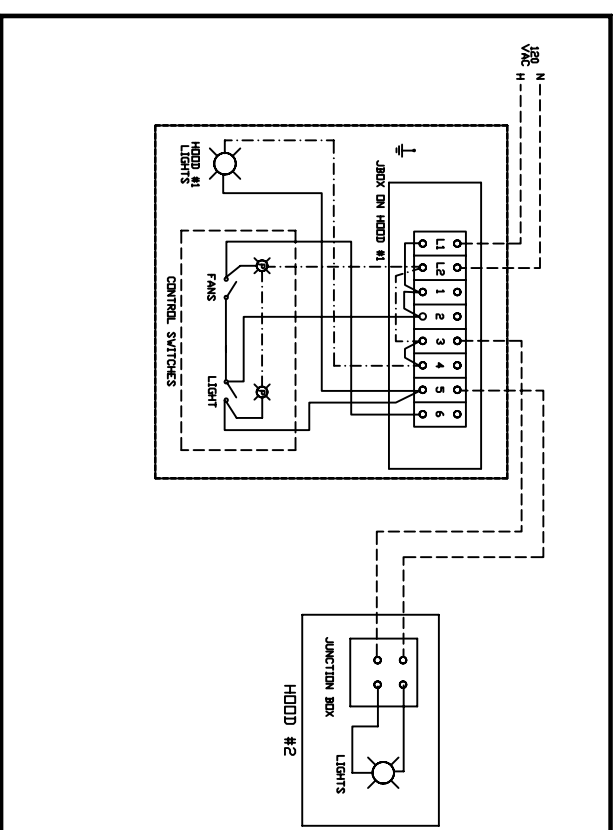
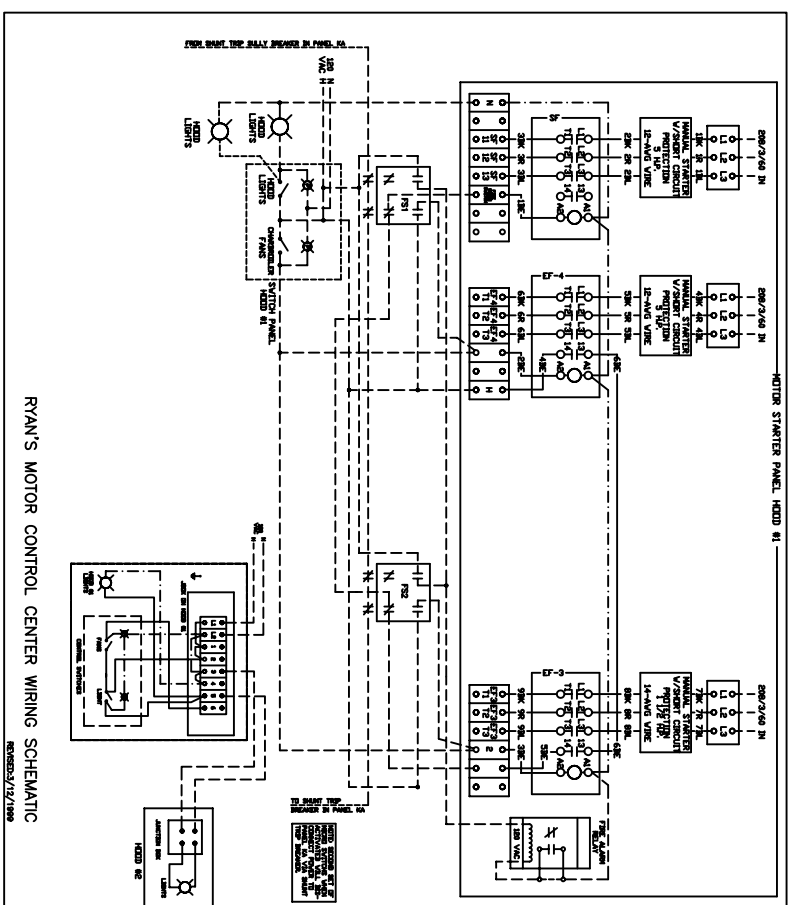
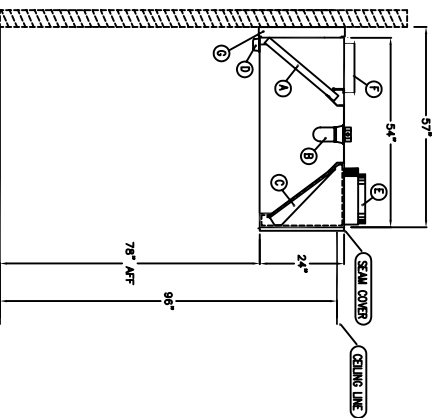
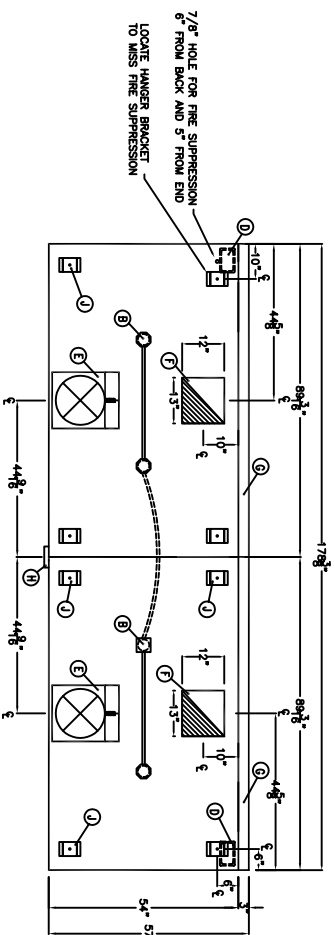
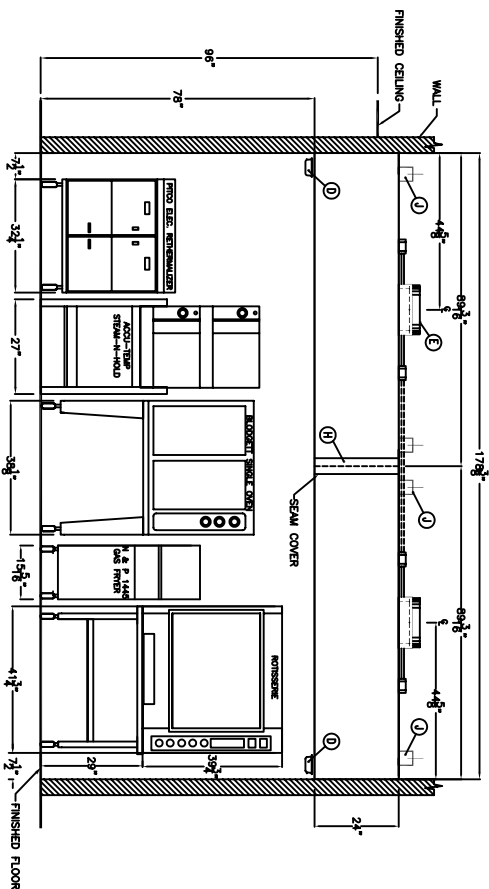


NEMA 1 ENCLOSURE - PAINTED EXTERIOR - SHIPPED LOOSE FOR WALL MOUNTING



CONTROL PANEL OPERATION

THE KITCHEN HOOD CONTROL PANEL OPERATES AS FOLLOWS:  
THE SWITCH PLATE ON HOOD #1 CONTROLS THE ON/OFF OF THE ANSUL SYSTEM CONTROLS THE WET CHEMICAL DISCHARGE IN THE EVENT OF FIRE. THE ANSUL SYSTEM THROUGH TWO EXHAUST FANS WILL CONTINUE TO RUN IF ALREADY RUNNING OR TURN THEM ON IF FANS ARE OFF, AND DISCONTINUE THE SHUNT TRIP BREAKER THROUGH A THIRD MICRO SWITCH AS DESCRIBED BEFORE. A FOURTH MICRO SWITCH CONTROLS POWER TO THE STARTER EQUIPPED BY SQUARE D TERMINALS BY SQUARE D NEMA 1 CABINET ENCLOSURE SHIPPED LOOSE FOR WALL MOUNTING.

SPECIFICATIONS

MATERIAL: 18 GA. TYPE 304 S/S.  
ACCESSORIES:  
A. (6) 25' x 16' x 2" TYPE II STAINLESS STEEL GREASE FILTERS  
B. (4) 100 WATT INCANDESCENT LIGHT FIXTURES  
C. (8) REMOVABLE PERFORATED ALUM. MUA DIFFUSERS  
D. (2) S/S/OP DUCT COLLARS W/FRISBLE LINK FIRE DAMPER  
E. (2) EXHAUST DUCT COLLARS WELDED IN TOP OF HOODS  
G. (2) 3" NEMA INSULATED REAR SPACERS(EA. HOOD)  
H. (1) S/S SEAM COVER  
J. (8) HANGER BRACKETS

CAPACITIES AND CONNECTIONS

EXHAUST CFM: 3611 SP: VERRIFY  
EXHAUST DUCT OPENINGS: (2) 13" X 12"  
MUA CFM: 2798 SP: .212  
MUA DUCT CONNECTION: (2) 14" ROUND  
E1. LIGHT CONNECTION: (4) 100 WATT

\*\*\* SUBMITTAL \*\*\*  
MODEL # EHMUA-54SS-178 3/8

□ APPROVED FOR FABRICATION  
□ REVERSE & RESUBMIT FOR APPROVAL

**LC SYSTEMS**  
COLUMBUS, OH. (614) 228-3976

PROJECT: RYANS #PT9L HOOD #2  
LOCATION: GEN III  
LG REPRESENTATIVE: MASTER PROTOTYPE #9 LEFT HAND

LISTINGS & LABELS:  
ETL file #W129146Q320  
Hood Grease Filters U.L. R13192  
Hood Light Fixtures U.L. E80045  
Exhaust Fans U.L. E35337

DATE: 10-3-97 SCALE: 1/2" = 1"  
DRAWING NO. LCS-393-06-02L  
REVISIONS: 8/5/99  
JOB NO. 2 OF 2