

**DIMENSIONAL FLOOR PLAN**

SCALE: 1/4"=1'-0"

**G.C. NOTE!**

SECURE AND REVIEW A COPY OF THE STATE FIRE MARSHAL COMMENT / REVIEW LETTER, AND INCLUDE ALL COSTS ASSOCIATED THEREWITH IN BASE BID. THIS INCLUDES BUT IS NOT LIMITED TO THE REQUIREMENT THAT ALL CLOSETS BE 1-HOUR RATED AND HAVE 45-MINUTE DOORS.

**WALL & FRAMING LEGEND**

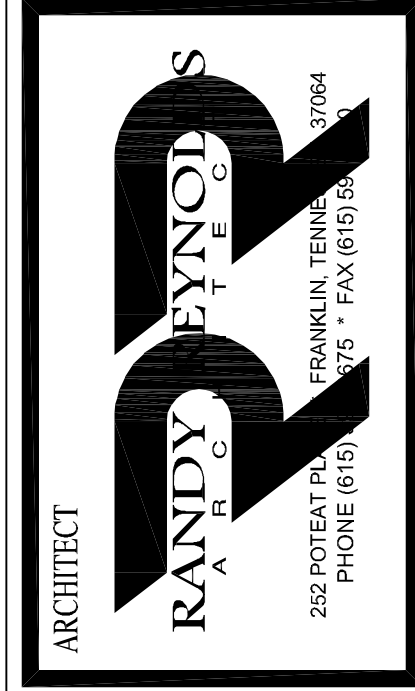
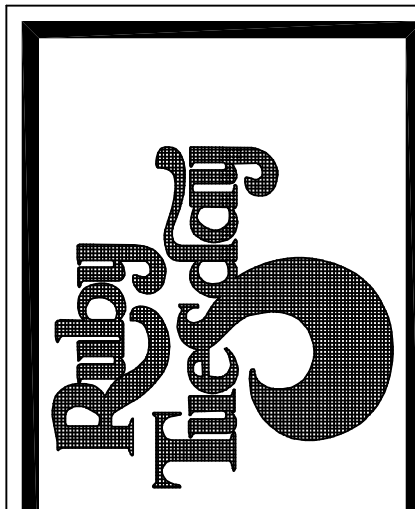
<b>A</b>	2x6 STUD FRAMING @ 16" O.C. W/ R-14 BATT INSUL WITH 1/2" GYP. BD. INTERIOR, 1/2" CDX PLYWOOD, BRICK AND 1/2" DUROCK-555 FINISH ON EXTERIOR.	<b>G</b>	2 x 6 STUD FRAMING @ 16" O.C. WITH 1/2" GYP. BD. EACH SIDE; SEE WALL FRAMING NOTE 2.
<b>B</b>	2x6 STUD FRAMING @ 16" O.C. W/ R-14 BATT INSUL WITH 1/2" DUROCK TO 12" AFF W/ 1/2" MR GYP. BD. ABOVE INTERIOR, 1/2" CDX PLYWOOD, 1/2" DUROCK-555 FINISH ON EXTERIOR. SEE WALL FRAMING NOTE 2.	<b>H</b>	COOLER/FREEZER WALL (BY MANUF.)
<b>C</b>	2x6 STUD FRAMING @ 16" O.C. W/ R-14 BATT INSUL WITH (2) LAYERS 5/8" TYPE X GYP. BD. INTERIOR, 1/2" CDX PLYWOOD, 1/2" DUROCK-555 FINISH ON EXTERIOR.	<b>I</b>	3 x 4 STUD LOW WALL PARTITION SEE SECTION FOR CONSTRUCTION.
<b>D</b>	2-HOUR FIRE RATED PARTITION-2X STUD FRAMING @ 16" O.C. WITH (2) LAYERS 5/8" GYP. BD. EACH SIDE TO UNDERSIDE OF ROOF DECK; SEE DETAIL 4/A1.5.	<b>J</b>	2 x 6 STUD LOW WALL PARTITION SEE SECTION FOR CONSTRUCTION.
<b>E</b>	5" T/2" 18-GA METAL STUD FRAMING @ 16" O.C. WITH 5/8" DUROCK TO 10'-0" AFF WITH 5/8" TYPE X GYP. BD. TO UNDERSIDE OF ROOF DECK ON KITCHEN SIDE. SEE WALL FRAMING NOTE #2 & SECTIONS.	<b>K</b>	8" CMU WALL, APPLY BLOCK FILLER AND PAINT TO MATCH FIELD BUILDING COLOR.
<b>F</b>	2 x 4 STUD FRAMING @ 16" O.C. WITH 1/2" GYP. BD. EACH SIDE; SEE WALL FRAMING NOTE 2.	<b>M</b>	2x6 STUD FRAMING @ 16" O.C. W/ R-14 BATT INSUL WITH 5/8" DUROCK TO 12" AFF W/ 5/8" OSB ABOVE INTERIOR, 1/2" CDX PLYWOOD, 1/2" DUROCK-555 FINISH ON EXTERIOR.

**WALL FRAMING NOTES:**

- ALL DIMENSIONS ARE SHOWN TO FACE OF STUDS AT FULL HEIGHT WALLS AND AT LOW WALLS UNLESS NOTED OTHERWISE.
- USE 1/2" DUROCK TO 24" WITH 1/2" CDX PLYWOOD TO 6'-0" BEHIND WALL TILE AND 1/2" MOISTURE RESISTANT GYP. BD. TO FIN CEILINGS. IN RESTROOMS, KITCHEN WALLS TO RECEIVE 1/2" DUROCK TO 12" WITH 1/2" OSB TO FIN CEILING IN LEU OF GYP. BD.
- SEE SHEET A2 FOR GENERAL NOTES.

DIMENSIONAL FLOOR PLAN

MARK	REVISION	DATE
	GLAZING	8.24.05



SEAL

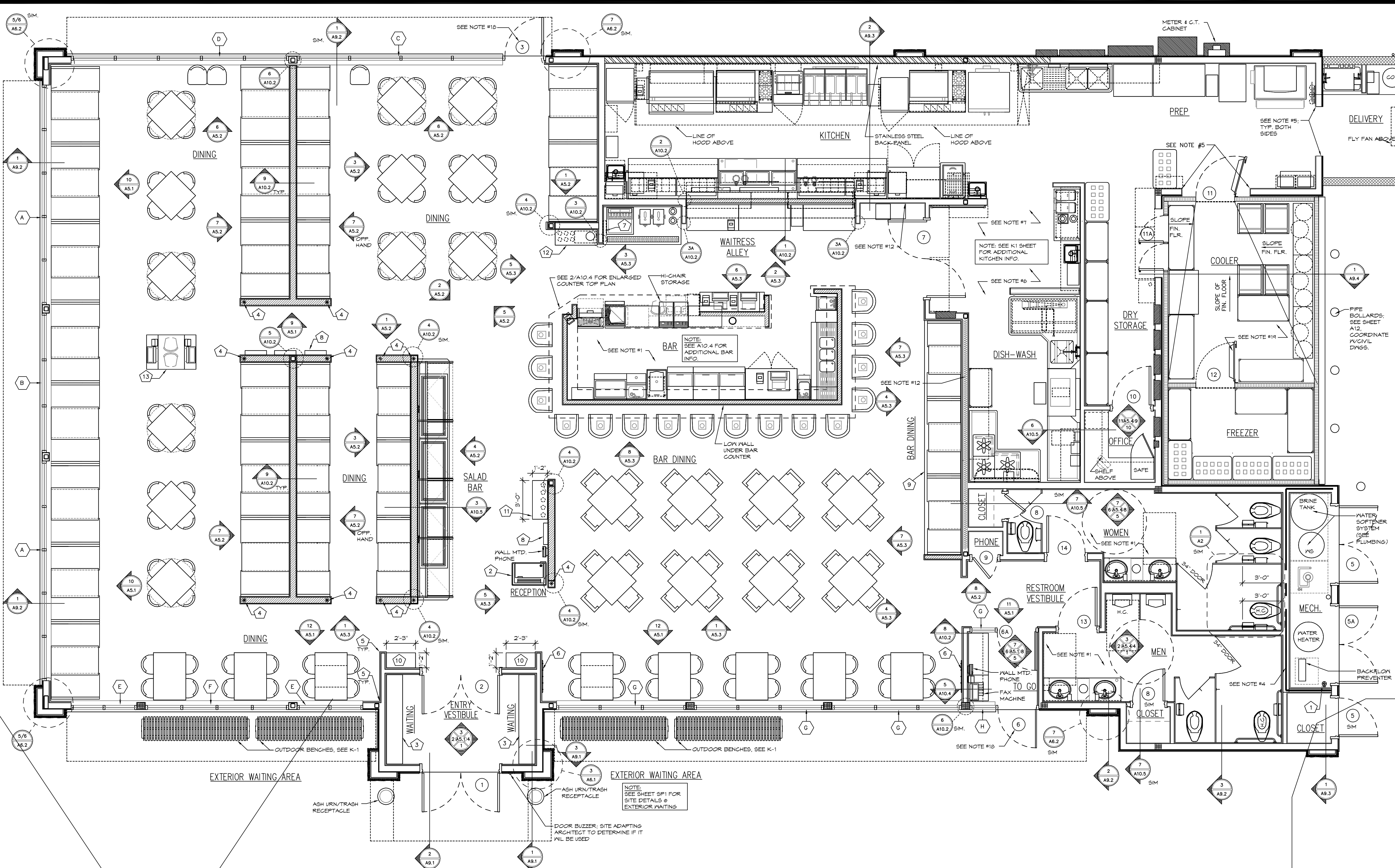
ARCHITECTURAL FLOOR PLAN

RUBY TUESDAY # 4731

1-10E SERVICE ROAD at TYLER DRIVE (-10 at Gauss Blvd)

LOUISIANA SLIDELL

RRA PROJECT NUMBER	0521
ISSUE FOR REVIEW	JULY 22, 2005
ISSUE FOR CONSTRUCTION	
CHECKED BY	RR
SCALE	AS NOTED
SHEET NUMBER	A-2



**GLAZING**

ALL GLAZING SHALL BE IMPACT RESISTANT AND SHALL BE SUITABLE FOR USE IN A 150MPH WIND ZONE. INCLUDE ALL COSTS.

**GENERAL NOTES**

- USE ONLY MOISTURE RESISTANT DRYWALL IN REST ROOMS AND BAR.
- SPECIAL CARE SHALL BE GIVEN TO PROVIDING SUFFICIENT BLOCKING FOR ALL ITEMS FASTENED TO STUD WALLS AND ALSO FOR FASTENING KITCHEN TRIM. THE CONTRACTOR SHALL ALSO REVIEW KITCHEN ELEVATIONS, AND ALL DETAILS SHOWN FOR BLOCKING REQUIREMENTS AND ADD ANY BLOCKING REQUIRED FOR PROPER ANCHORAGE EVEN THOUGH NOT SPECIFICALLY SHOWN. REFER TO DRAWINGS FOR CONSTRUCTION OF WALL BEHIND HOOD.
- CONTRACTOR TO PROVIDE FOR INSTALLATION OF MANAGERS MISCELLANEOUS OFFICE SUPPLIES, POSTERS, ETC. ALSO SEE MANAGER INSTALL LIST SHEET AT CONTACT OWNER'S REPRESENTATIVE FOR ALLOWANCE.
- INTERIOR WALLS SURROUNDING MECHANICAL ROOM SHALL HAVE (2) LAYERS 5/8" TYPE "X" GYP. BD. EA. SIDE SEALED TIGHT TO UNDERSIDE OF DECK FOR TWO HOUR FIRE RATING (UL DESIGN - R301) SEE DETAIL 4/A/3.
- INSTALL 2" X 2" STAINLESS STEEL ANGLE AROUND JAMB AND HEAD SET IN SILICONE. F.B.C.G.
- INSTALL 12" HIGH "DURROCK" OR EQUAL BEHIND ALL TILE BASES AND IN ALL SERVICE AREAS, KITCHEN, REST ROOMS AND BAR. BACK ALL JOINTS WITH STUDS.
- FLOOR FINISHES TO BE SETTING OVER 2" SETTING BED (SLOPED TO FLOOR DRAINS AS INDICATED ON SHEET A3) @ KITCHEN.
- ALL HOOD BLOCKING IN REST ROOMS AND ALL NON-PUBLIC AREAS SUCH AS KITCHEN, PREPARATION AREA, DISHWASHING, ETC. TO BE PRESSURE TREATED LUMBER.
- INSTALL 2" X 2" (STAINLESS STEEL) ANGLE FROM TOP OF Q.T. BASE TO 5'-0" A.F.F. ON ALL CORNERS IN KITCHEN, F.B.C.G. SEAL WITH SILICONE. SEE DETAIL 3/A/3.
- CONTRACTOR TO RECEIVE, ASSEMBLE AND SET IN PLACE THE FOLLOWING (BUT NOT LIMITED TO): TABLETOPS, TABLE BASES, CHAIRS, BOOTHS.
- SILICONE SEAL ALL INSIDE CORNERS AND CEILINGS IN THE BATHROOMS WITH WHITE SILICONE.
- PROVIDE FULL HEIGHT, 6" R-18 BATT INSULATION, FOR SOUND DAMPENING ENTIRE LENGTH OF THIS WALL.
- SECURE ALL BAR SINKS, COCKTAIL STATIONS, HAND SINKS, KITCHEN SINKS TO WALL AND SEAL WITH CLEAR SILICONE.
- VERIFY THE USE OF BLACK FRP AT NOTED BAR LOW WALLS WITH LOCAL HEALTH DEPARTMENT AUTHORITY.
- SEE SHEET A12 FOR DUMPSTER AREA CONSTRUCTION.
- IT IS VERY IMPORTANT THAT THESE CRITICAL DIMENSIONS ARE STRICTLY HELD AS SHOWN FOR THE INTERIOR FURNISHINGS PACKAGE TO FIT IN THE PROVIDED SPACE AFTER ALL FINISHES ARE INSTALLED.
- ARTWORK PACKAGE SHALL BE FURNISHED BY THE OWNER. CONTRACTOR SHALL FURNISH ALL LABOR TO INSTALL THE ARTWORK PACKAGE AT THE INSTRUCTION OF THE OWNER OR THE OWNER'S REPRESENTATIVE.
- VERIFY DOOR SWINGS WITH SITE LAYOUT AND ADJUST SWINGS ONLY IF REQUIRED TO ACCOMMODATE TOILET SEPARATION.
- CONTRACTOR TO CAREFULLY COORDINATE INSTALLATION OF ALL WALLS SURROUNDING COOLER/FREEZER IV MANUFACTURER.
- PENETRATIONS IN RATED PARTITIONS FOR CONDUIT, PIPING OR OTHER COMBUSTIBLE ITEMS SHALL BE FILLED WITH AN APPROVED NON-COMBUSTIBLE MATERIAL TO PROVIDE AN APPROVED SEAL TO PROHIBIT THE PASSAGE OF FIRE AND SMOKE.
- NOTE: RESPONSIBILITIES OF CONSTRUCTION FOR MISC. KITCHEN EQUIPMENT, GENERAL CONTRACTOR TO PROVIDE. ALL FINISHES FOR POWER AND CONTROLS TO BE PROVIDED, INSTALLED & CONNECTED FOR ALL KITCHEN EQUIPMENT. - SET IN PLACE. ALL KITCHEN EQUIPMENT UNLESS NOTED OTHERWISE.
- NOTE TO GENERAL CONTRACTOR, INSTALLATION OF KITCHEN EQUIPMENT IS BASED ON THE FOLLOWING JOB SITE CONDITIONS.
  - CLEAR ACCESS TO THE BUILDING FOR DELIVERY & INSTALLATION.
  - WORK AREA IS TO BE CLEAN & FREE OF DEBRIS.
  - ALL ROUGH-INS ARE TO BE COMPLETE AND READY FOR FINAL CONNECTION AT THE TIME OF INSTALLATION.
  - FLOOR IS FINISHED, CLEANED AND READY FOR EQUIPMENT. WALLS ARE FINISHED AS SPECIFIED.
  - EQUIPMENT WILL BE SET IN PLACE ONCE ITEM IS READY FOR FINAL CONNECTION BY FOOD SERVICE CONTRACTOR. ANY LABOR TO MOVE EQUIPMENT OR RESET EQUIPMENT IS THE RESPONSIBILITY OF THE GENERAL CONTRACTOR & IS TO BE COORDINATED IV OWNER'S REPRESENTATIVE.

**KEY NOTES**

- CONTRACTOR TO PROVIDE & INSTALL DRAWING TUBE FOR PERMANENT HOUSING OF AS-BUILT DRAWINGS. DRAWING TUBE SHALL BE 6" PVC W/GLUED BOTTOM CAP & SCREW ON TOP CAP. PROVIDE ATTACHMENT CHAIN TO CAP & TUBE. STRAP TO WALL W/PPIPE STRAP OR EQUAL.
- HOSTESS PODIUM- SEE DETAIL 10/A10.3
- WAITING BENCH- SEE DETAIL 10/A10.2
- \* INDICATES UNISTRUT SUPPORT POST SET IN CONCRETE AND INSTALLED AT ENDS OF ALL LOW WALL CONDITIONS SHOWN. SEE DETAIL 9/A10.2 FOR INSTALLATION.
- TYP. FIN.-1 CORNER DETAIL- SEE DETAIL 1/A10.1
- COAT HOOKS- SEE DETAIL 6/A10.1
- NEWSPAPER DISPLAY CABINET- SEE DETAIL 7/A10.1
- MENU HOLDER- SEE DETAIL 8/A10.1
- RAISED PLATFORM BOOTH SEATING- SEE DETAIL 12/A10.2
- SERVICE CABINET- SEE DETAIL 4/A10.5
- SERVICE CABINET- SEE DETAIL 5/A10.5
- SERVICE CABINET- SEE DETAIL 8/A10.5
- SERVICE CABINET- SEE DETAIL 9/A10.5

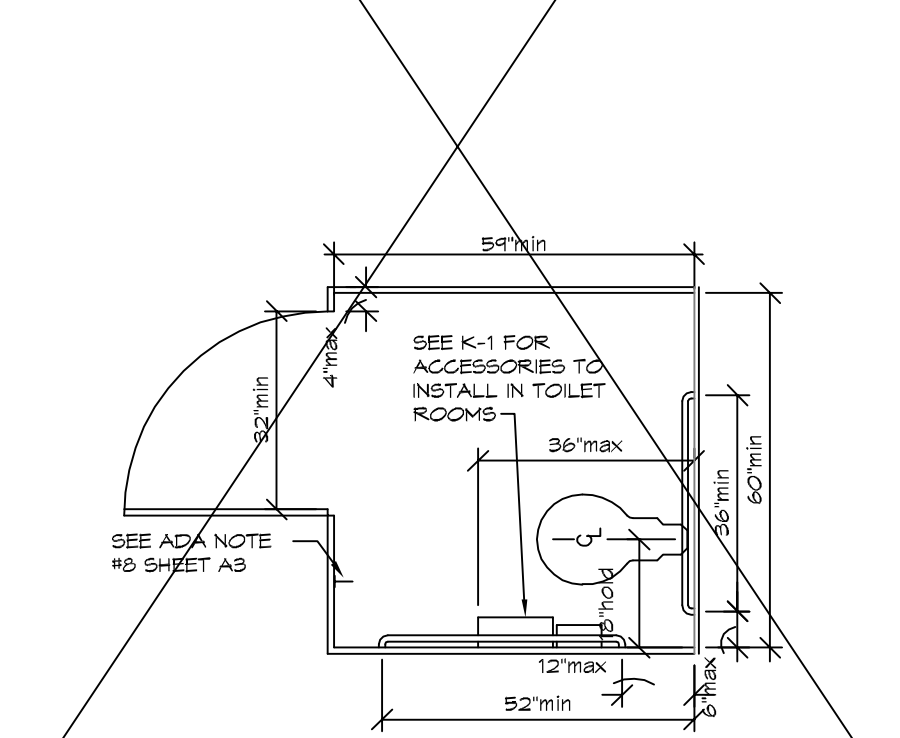
**LEGEND**

W WINDOW TYPES- SEE SHEET A8.1

D DOOR TYPES- SEE SHEET A8.1

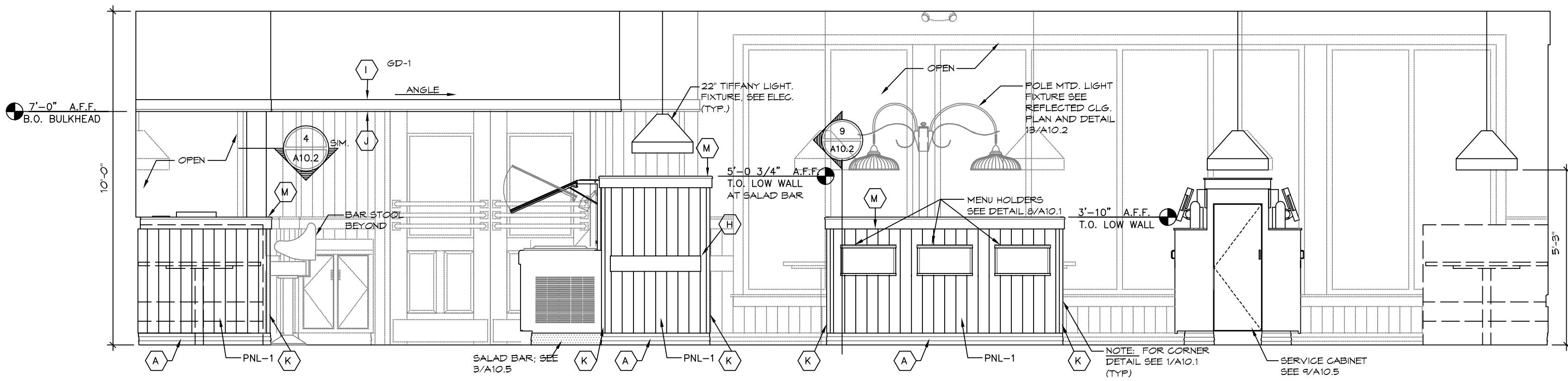
**ARCHITECTURAL FLOOR PLAN**

SCALE: 1/4"=1'-0"



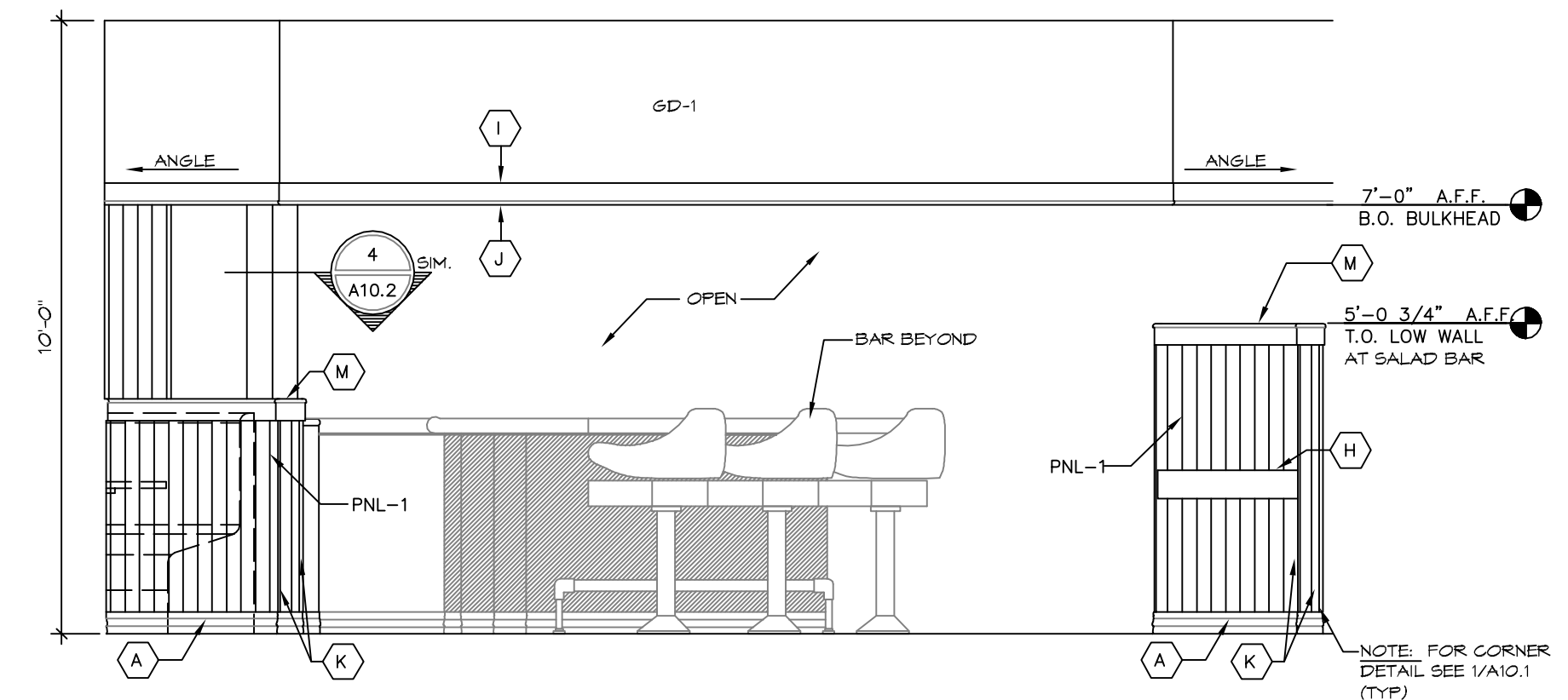
TYP H.C. STALL PLAN

3/8"=1'-0"



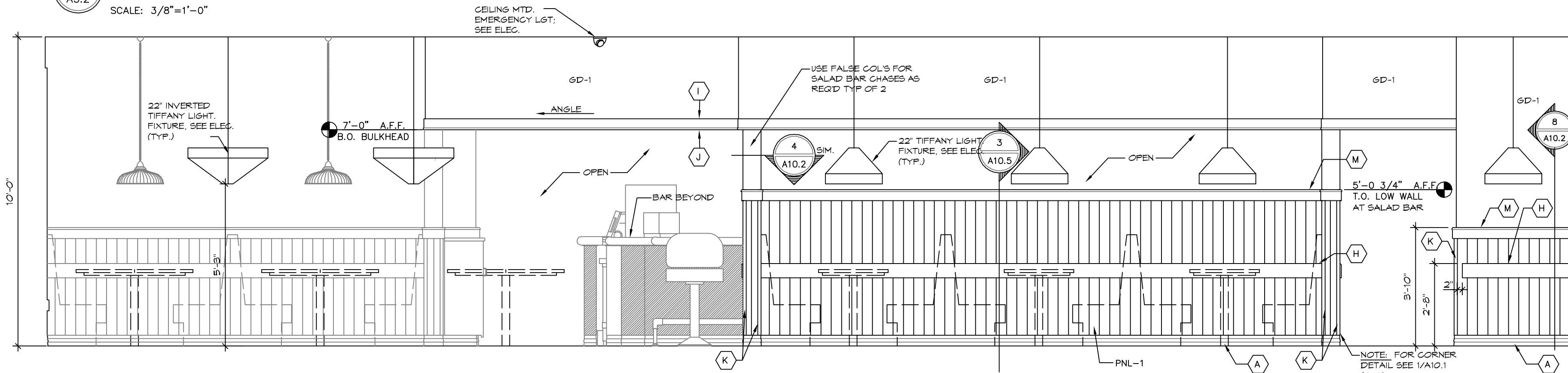
1 INTERIOR ELEVATION

A5.2 SCALE: 3/8"=1'-0"



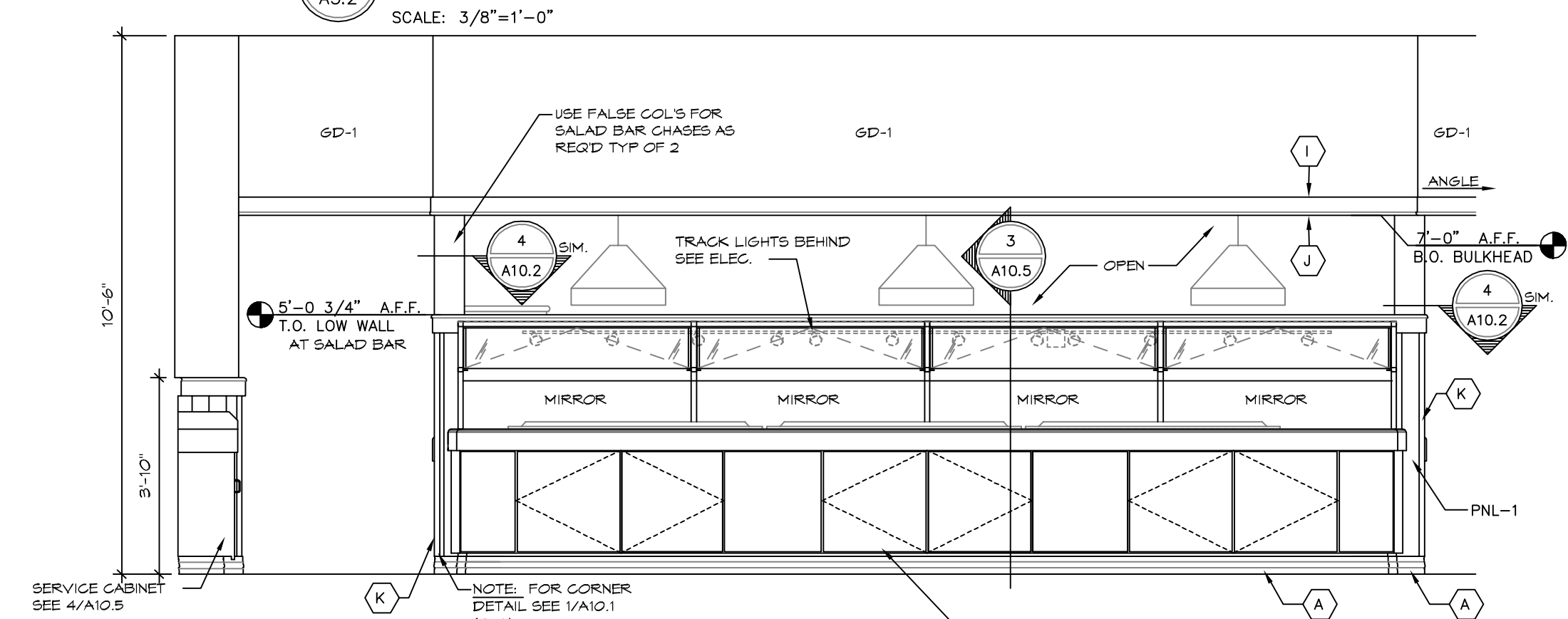
2 INTERIOR ELEVATION

A5.2 SCALE: 3/8"=1'-0"



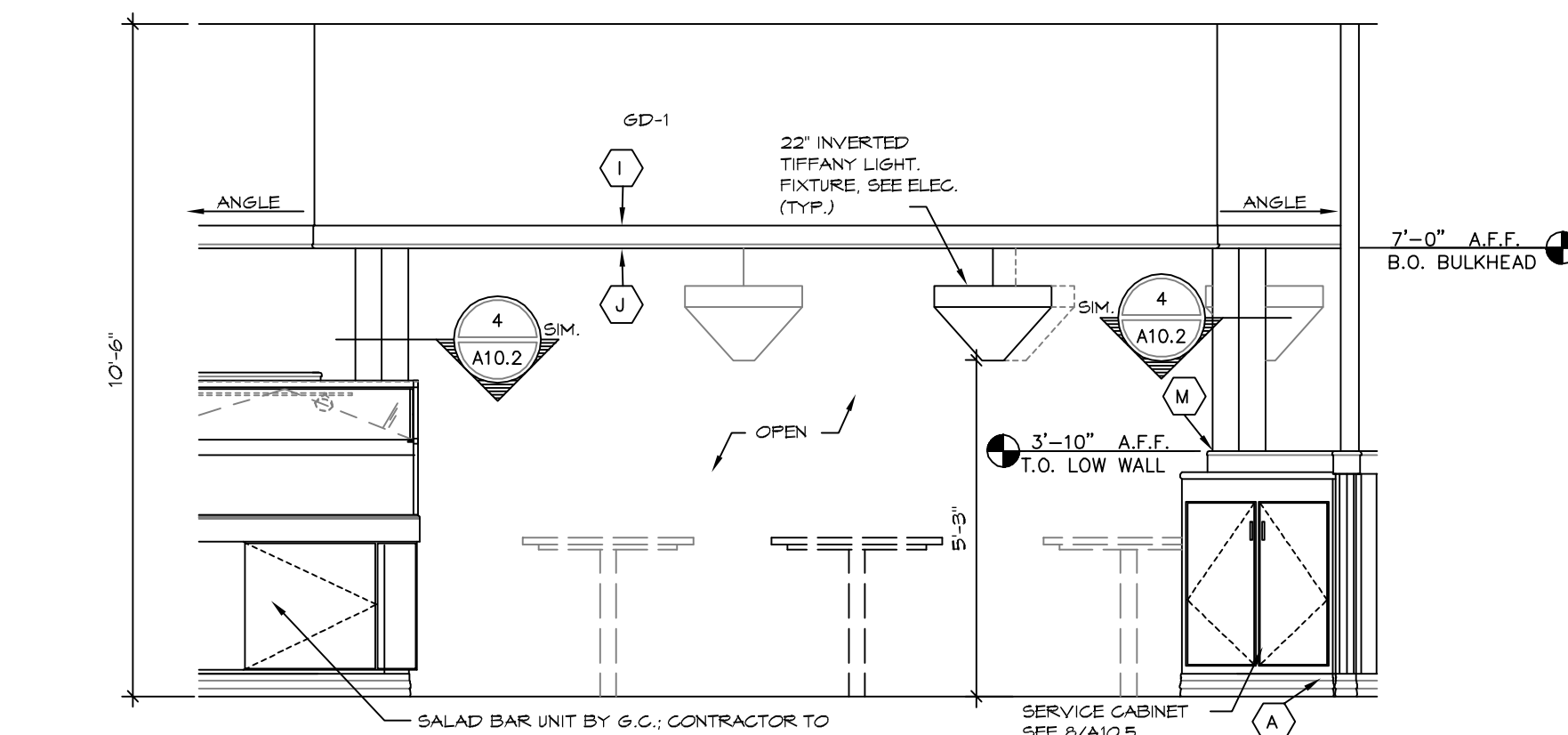
3 INTERIOR ELEVATION

A5.2 SCALE: 3/8"=1'-0"



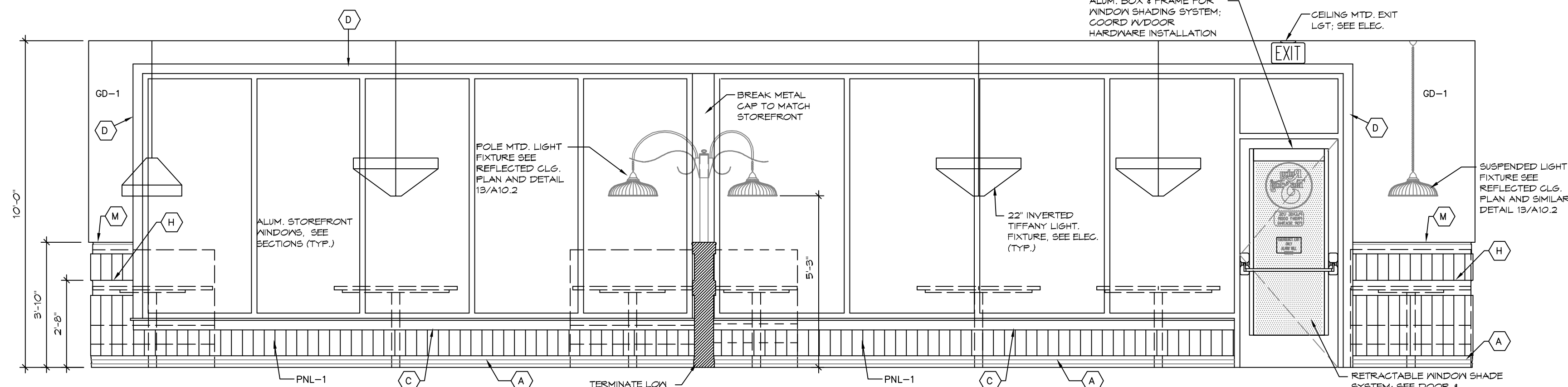
4 INTERIOR ELEVATION

A5.2 SCALE: 3/8"=1'-0"



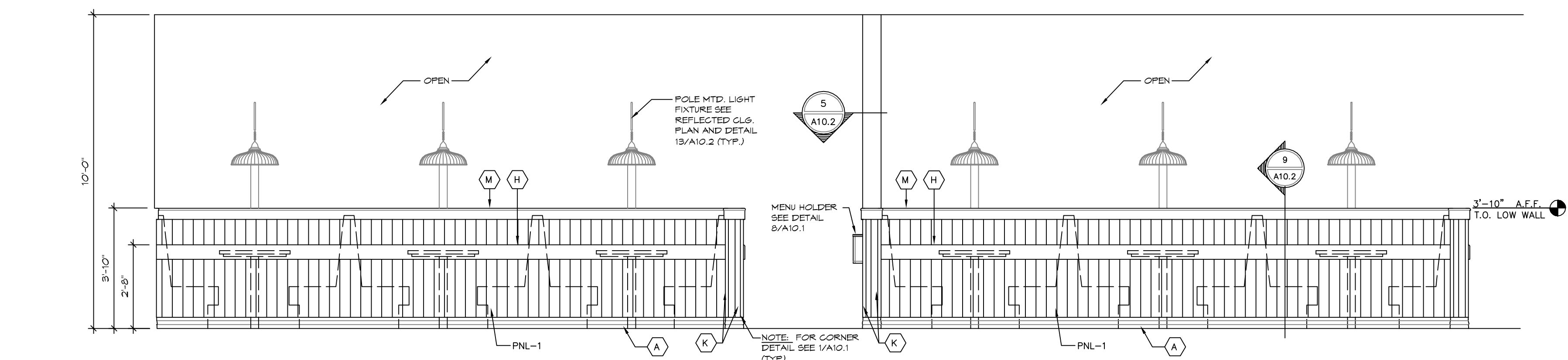
5 INTERIOR ELEVATION

A5.2 SCALE: 3/8"=1'-0"



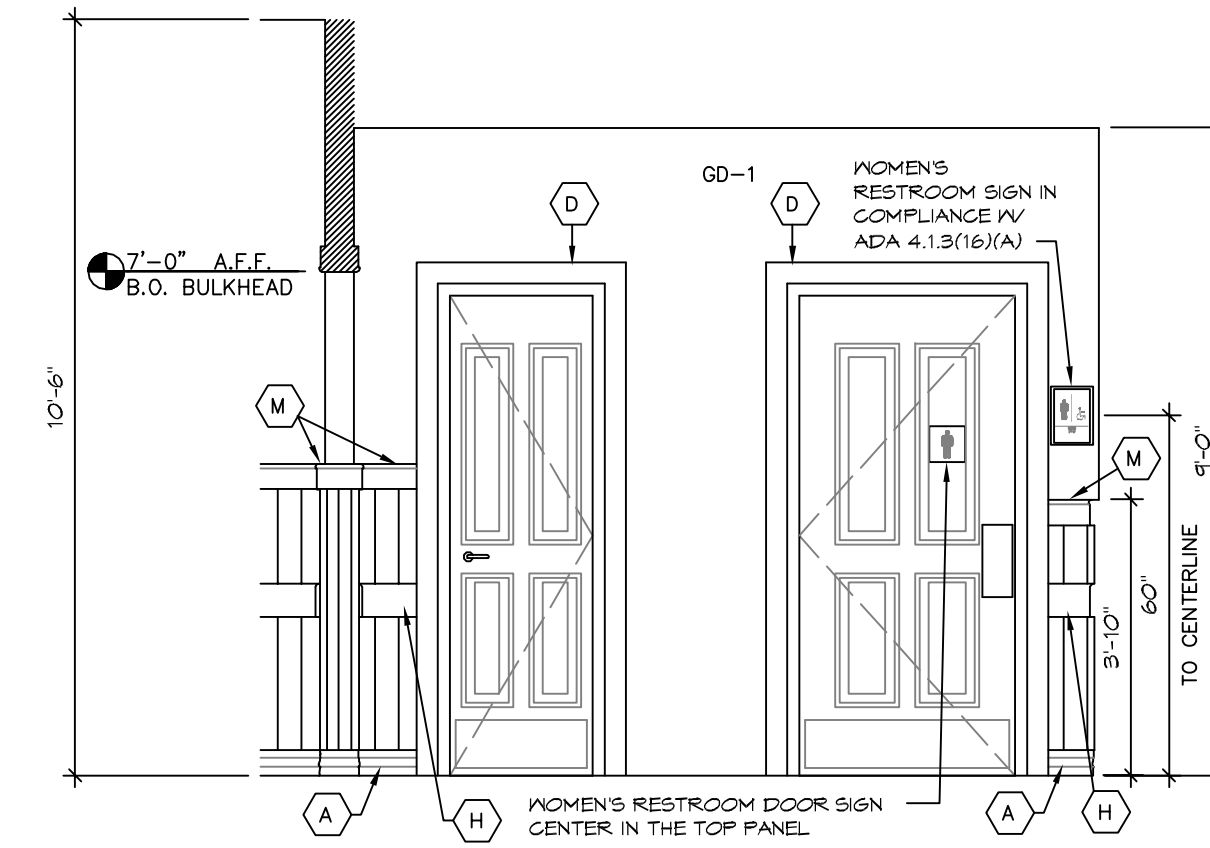
6 INTERIOR ELEVATION

A5.2 SCALE: 3/8"=1'-0"



7 INTERIOR ELEVATION

A5.2 SCALE: 3/8"=1'-0"



8 INTERIOR ELEVATION

A5.2 SCALE: 3/8"=1'-0"

- NOTES
1. ALL BOOTH BACKS ARE TO BE 42" HIGH.
  2. REFER TO A1 FOR FINISH DEFINITIONS.
  3. REFER TO A10.1 FOR TRIM DEFINITIONS.

INTERIOR ELEVATIONS

**MATERIAL AND EXECUTION NOTES**

- MATERIALS**
1. ALL EXTERIOR TRIM TO BE LIMITED TO SMOOTH "HARDTRIM" PLANKS AS MANUFACTURED BY JAMES HARDI OR APPROVED EQUAL.
  2. ALL SIGNS AND LED LIGHTING ARE FURNISHED AND INSTALLED BY OWNER/OWNER'S REPRESENTATIVE. CONTRACTOR SHALL ASSIST AS NECESSARY IN INSTALLATION.
  3. EXTERIOR WINDOW GLASS TO BE INSULATED CLEAR OVER CLEAR GLASS.
  4. EXTERIOR APPLIED STONE BY ELDERADO STONE, COLOR/STYLE TO BE WARM SPRING MOUNTAIN LEDGE. CONTACT EITHER CHUCK BAER OR KEVIN REEDY AT (760) 908-7428 APPROVED EQUALS ARE: ARROYOHEAD STONE AT (865) 471-6866. COLOR/STYLE IS TO BE RUBY TUESDAY CUSTOM BLEND.
  5. ENVIRONMENTAL STONE AT (800) 482-7448. COLOR/STYLE 80/80 CHAMPAGNE LEDGESTONE & WARM SPRING LEDGESTONE. CONTACT EITHER BECKY AT EXT. 204 OR RICH AT EXT. 7. MORTAR TO BE BG BRIDGE BY BLUE CIRCLE. STONE VENEER IS TO BE INSTALLED IN A "DRY STACKED" PATTERN WHICH WILL VISUALLY MINIMIZE THE MORTAR JOINTS.
  6. 555, "SYNTHETIC STUCCO SYSTEM". FINISH GOAT TO BE DRYVIT WEATHERLAST ELASTOMERIC COATING. CONTACT JIMMY THOMPSON AT (801) 421-8648.
  7. ALL METAL COMPONENTS THAT MAKE UP THE CANOPY DIAGONAL SUPPORTS ARE TO BE GALVANIZED. THE GAST METAL STAR IS NOT REQUIRED TO BE GALVANIZED.
- EXECUTION**
1. USE ONLY 25 YEAR SILICONIZED PAINTABLE CAULK ON THE EXTERIOR OF THE BUILDING TYPICAL.
  2. SHEATHING SHALL BE NAILED PER THE "ROOF AND WALL SHEATHING SCHEDULE" ON SHEETS S2.1 & S2.2 OF THE STRUCTURAL DRAWINGS.
  3. STONE APPLICATION PER DETAILS ON A4 SHEETS & MANUFACTURER'S INSTALLATION INSTRUCTIONS.
  4. DRYVIT EXTERIOR WALL FINISH TO BE INSTALLED IN STRICT ADHERENCE TO MANUFACTURER'S INSTRUCTIONS (DRYVIT 415 SYSTEM).
  5. ALL METAL COMPONENTS ON THE EXTERIOR ARE TO BE PAINTED WITH AN APPROPRIATE METAL PRIMER AND THEN AN APPROPRIATE METAL PAINT.
  6. THE STONE VENEER TO BE INSTALLED TRUE, SQUARE, PLUMB, AND PARALLEL TO THE STRUCTURE. STONE INSTALLATION SHALL RESEMBLE A DRY STACKED LOOK MINIMIZING THE APPEARANCE OF GROUT.
- GENERAL NOTES**
1. ALL UTILITY BOXES (ELECTRICAL PANELS, GAS METER, ETC.) ARE TO BE PAINTED 'A' TO MATCH (955) IF FERMISSEBLE BY THE LOCAL UTILITY COMPANIES.
  2. ALL SURFACE MTD. UTILITY BOXES, METERS, ETC. SHALL BE MOUNTED NO MORE THAN 2" (TO BOTTOM) ABOVE FINISHED FLOOR. (TYP.)
  3. DOWNSPOUTS & GUTTERS ARE TO BE PAINTED TO MATCH ADJACENT BUILDING COLORS.
  4. IF NECESSARY STEP BASE TRIM TO FOLLOW SLOPING GRADE AROUND THE PERIMETER OF THE BUILDING. BREAK TRIM AT DOOR OPENINGS OR ALONG EXPANSION JOINTS.
  5. SEE A13.2 FOR ALL SIGN DETAILS. COORDINATE USE AND INSTALLATION OF ALL BUILDING SIGNS WITH RUBY TUESDAY CONSTRUCTION DIRECTOR.
  6. SEE SHEET A6.2 FOR ANNING NOTES.
  7. STONE VENEER TO BE INSTALLED TRUE, SQUARE, PLUMB, AND PARALLEL TO THE STRUCTURE.
  8. ALL EXTERIOR LIGHT FIXTURES SHALL BE PAINTED 'B' BY MANUFACTURER. ALL VISIBLE ROOF TOP EQUIPMENT SHALL BE FIELD PAINTED 'B'.
  9. ALL CMU WALLS TO RECEIVE 555 FINISH PRIOR TO PAINTING. TYPICAL OF BOTH INTERIOR & EXTERIOR SIDES. COLOR TO MATCH FIELD BUILDING COLOR.

**FINISH LEGEND**

- (A) RUBY TUESDAY "MUSTARD"
- (B) SHERWIN WILLIAMS #5W2809 "ROOKWOOD SHUTTER GREEN"
- (C) RUBY TUESDAY "CANOPY RED"
- (D) SHERWIN WILLIAMS #6194 "BASIL"
- (E) DRYVIT CUSTOM COLOR N1-22-08-24-03 (MUSTARD)
- (F) "WARM SPRING MOUNTAIN LEDGE" STONE VENEER BY ELDERADO STONE
- (G) SHERWIN WILLIAMS MACROPOXY 646 (PRIMER) TO BE PAINTED AT ALL DISSIMILAR METAL SURFACES AS A BASE FOR COLOR PAINT.

**NOTES:**

1. ALL COLORS EXCEPT THOSE USED FOR METAL SURFACES SHALL BE SHERWIN WILLIAMS "SUPERPAINT" EXTERIOR LATEX HIGH GLOSS FINISH. BASE 'B' A47502. ALL COLORS FOR USE ON METAL SURFACES SHALL BE 'D' TM' ACRYLIC EXTERIOR GLOSS FINISH. ALL CONTAINERS OF THE SAME COLOR SHALL HAVE IDENTICAL SHAKE TIMES. NO EXCEPTIONS WILL BE PERMITTED.
2. SHERWIN WILLIAMS MACROPOXY 646 (PRIMER) TO BE PAINTED AT ALL DISSIMILAR METAL SURFACES AS A BASE FOR COLOR PAINT.
3. ALL EXTERIOR PAINT IS TO BE INSTALLED WITH A BRUSH OR ROLLER. SPRAYING IS NOT ALLOWED.

**CUSTOM PAINT FORMULA KEY**

RUBY TUESDAY MUSTARD	SUPERPAINT EXTERIOR GLOSS A44754 - ULTRADEEP BASE. FORMULA FOR 1 GALLON: Y3 (DEEP GOLD)- 6Y38/32 R2 (MARBON)- 24/32 G2 (NEA GREEN)- 22/32 P1 (WHITE)- 2Y44/32
RUBY TUESDAY CANOPY RED	EXTERIOR ACCENTS HIGH GLOSS Y32850 - PRIMARY RED. FORMULA FOR 1 GALLON: G2 (NEA GREEN)- 1/32 P1 (WHITE)- 8/32 + 1/64 Y3 (DEEP GOLD)- 8/32 R3 (MAGENTA)- 12/32 N1 (RAW UMBER)- 17/32

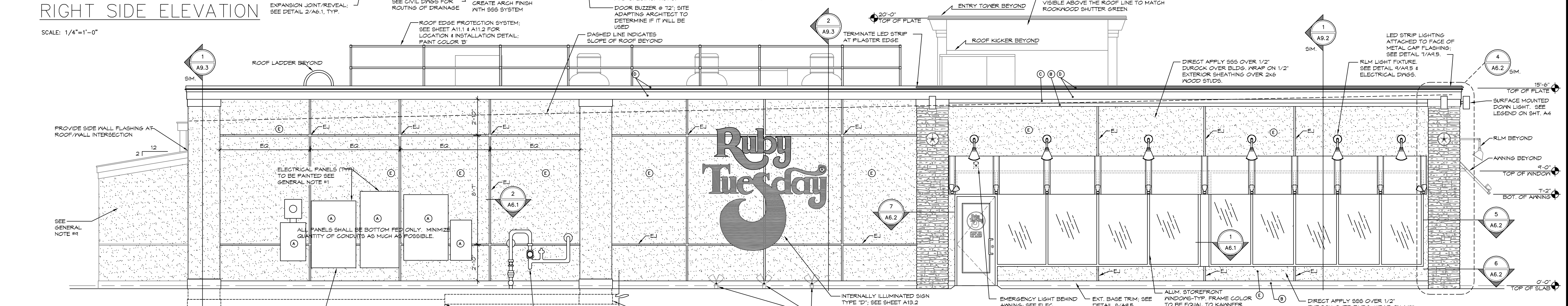
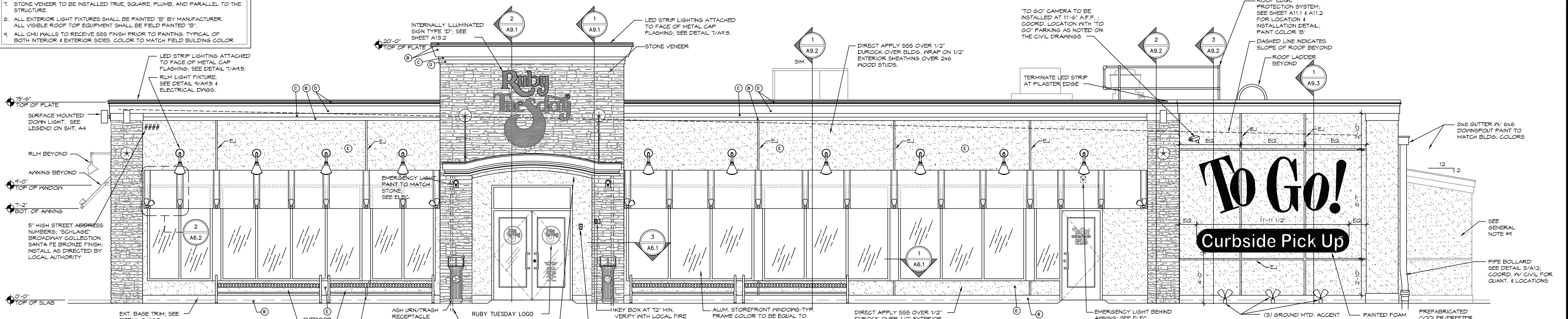
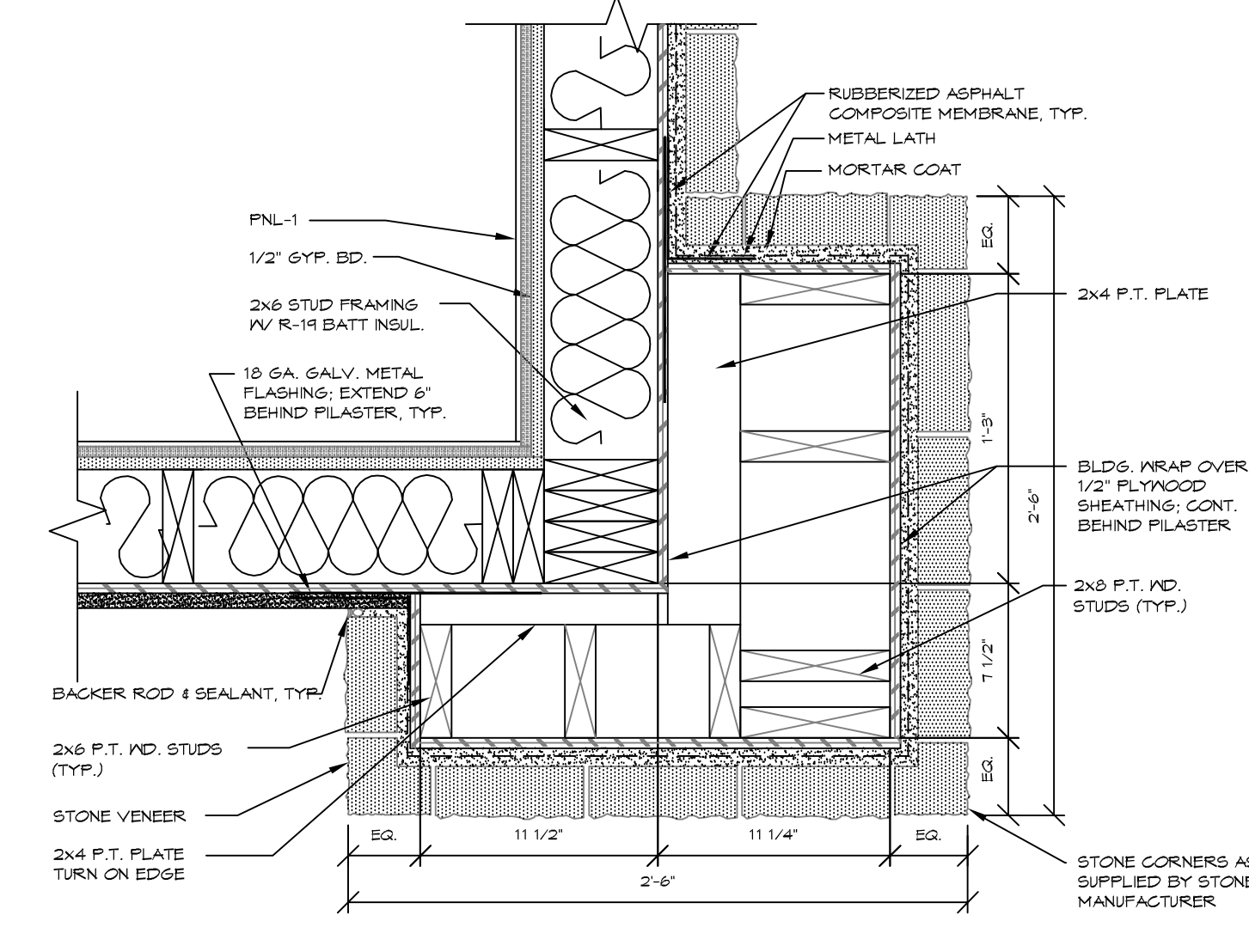
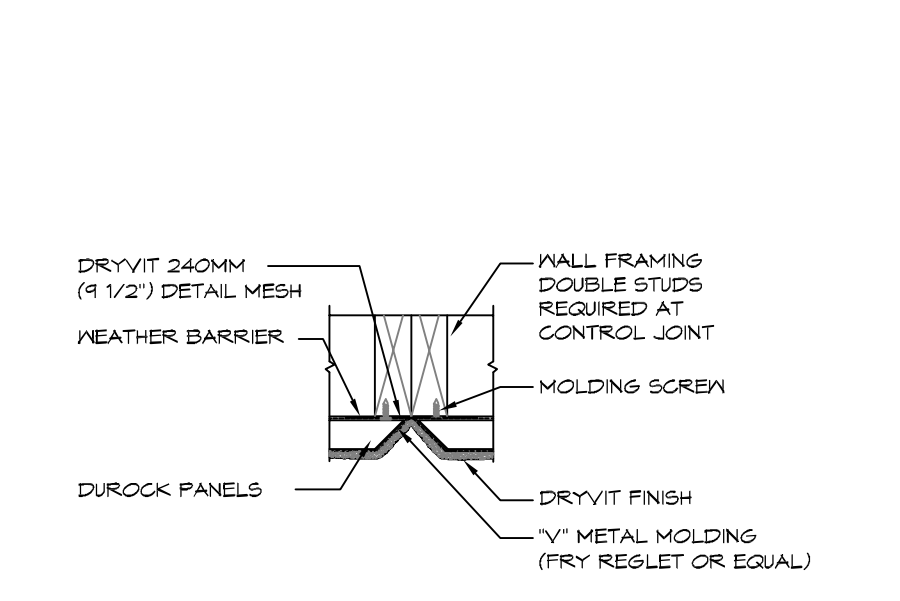
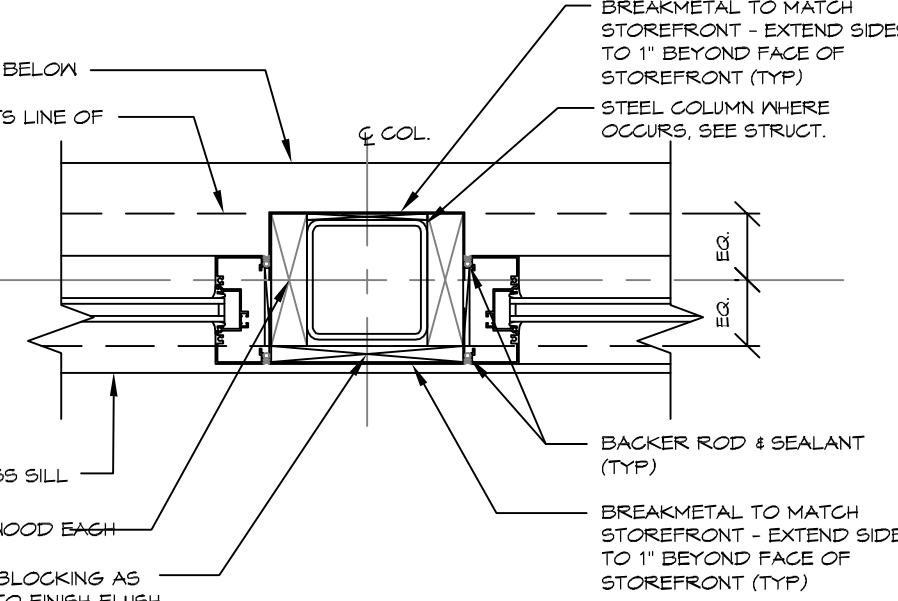
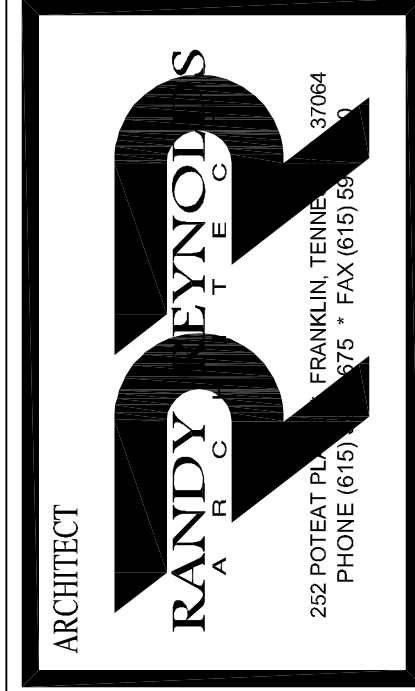
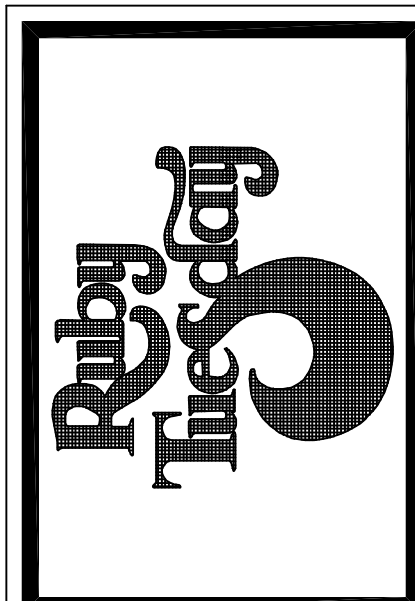
**NOTES:**

1. ALL PAINT TO BE FORMULATED BY SHERWIN WILLIAMS.
2. SHERWIN WILLIAMS PRODUCT INFORMATION NUMBER: 820-321-8194
3. BECAUSE THE DRYVIT MATERIALS ARE MIXED AND THE COLORS ARE PRE-DETERMINED CAREFUL MATCHING IS REQUIRED FOR ALL SHERWIN WILLIAMS PAINT COLORS.

**GLAZING NOTE!**

ALL GLAZING SHALL BE IMPACT RESISTANT AND SHALL BE RATED FOR USE IN A 130MPH WIND ZONE. INCLUDE ALL COSTS.

MARK	REVISION	DATE
	GLAZING	8.24.05



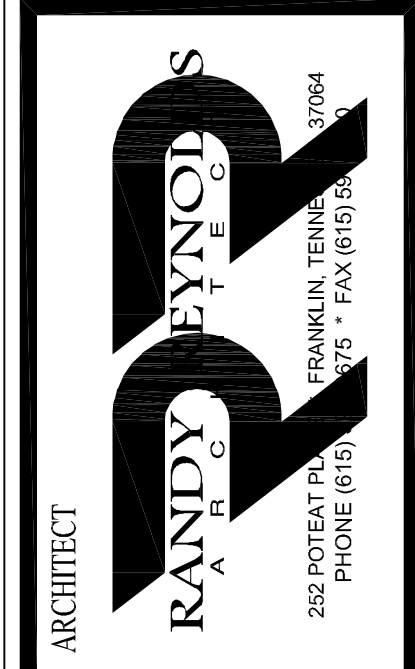
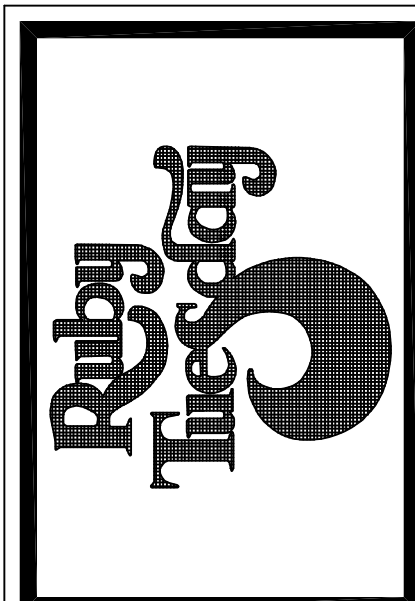
EXTERIOR ELEVATIONS & DETAILS

RUBY TUESDAY # 47314  
1-10E SERVICE ROAD at TYLER DRIVE (-10 at Gauss Blvd)  
LOUISIANA  
SLIDELL

RRA PROJECT NUMBER 0521  
ISSUE FOR REVIEW JULY 22, 2005  
ISSUE FOR CONSTRUCTION

CHECKED BY RR  
SCALE AS NOTED  
SHEET NUMBER A-6.1

MARK	REVISION	DATE
	GLAZING	8.24.05



SEAL

SEATING AND EQUIPMENT PLAN

RUBY TUESDAY # 4734

1-10E SERVICE ROAD at TYLER DRIVE (I-10 at Galus Blvd)

SLIDELL LOUISIANA

RRR PROJECT NUMBER 0521

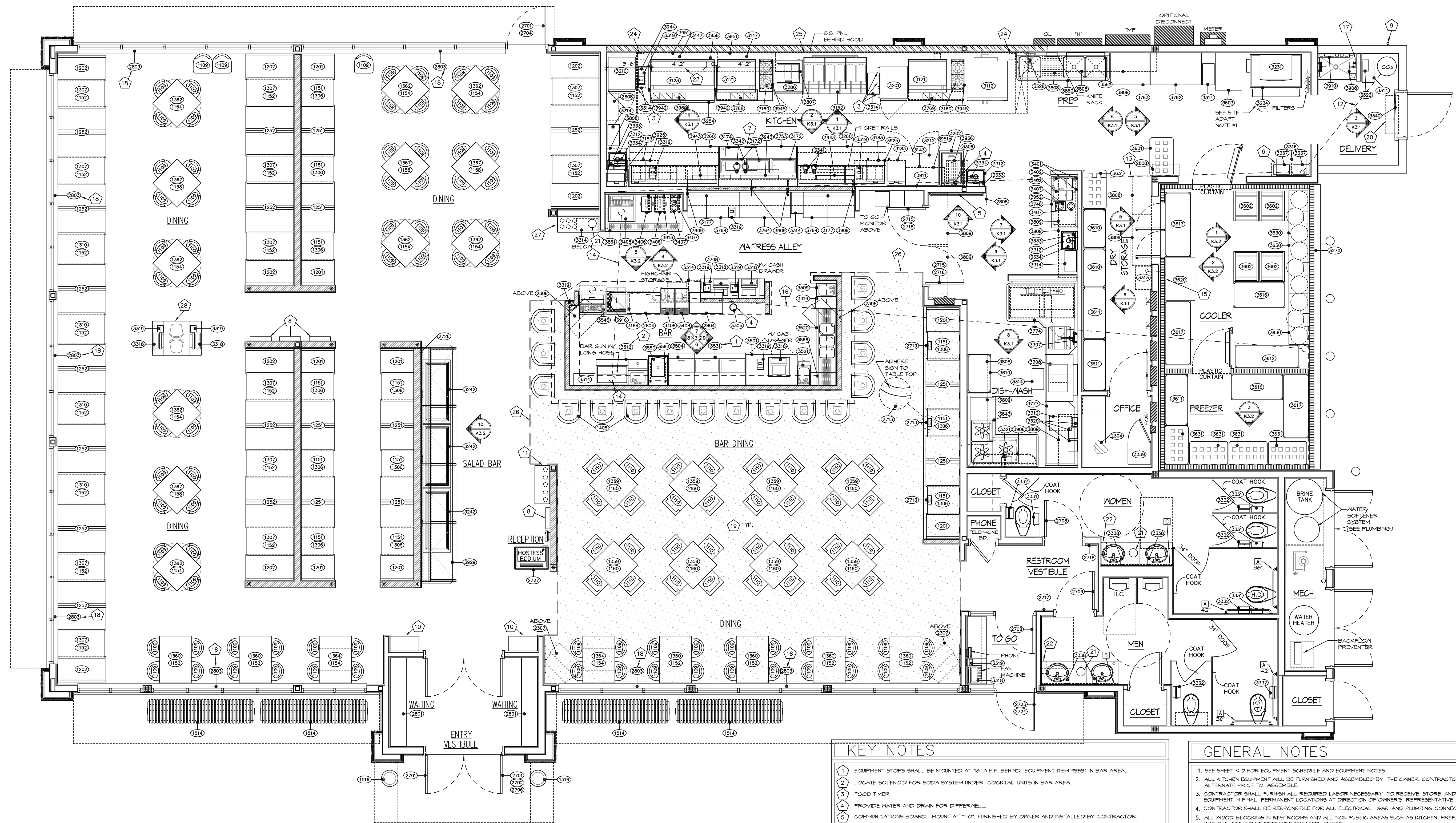
ISSUE FOR REVIEW JULY 22, 2005

ISSUE FOR CONSTRUCTION

CHECKED BY RR

SCALE AS NOTED

SHEET NUMBER K-1



### EQUIPMENT AND FURNISHINGS PLAN

SCALE: 1/4"=1'-0"

**G.C. NOTE!** GENERAL CONTRACTOR TO VERIFY IF CONSTRUCTION DIRECTOR WHICH OF THE FOLLOWING ITEMS BELOW ARE TO BE INSTALLED.

1. GENERAL CONTRACTOR TO VERIFY IF THE ALTERNATE ICE MACHINE IS TO BE INSTALLED. SEE SHEET K2 FOR SPECIFICATIONS.

MARK	STANDARD ITEMS	MANUFACTURER	MODEL NUMBER	SUPPLIED BY	INSTALLED BY	QUANTITY
(A)	GRAB BARS	BOBRICK	B-6806	G.C.	G.C.	4
(B)	33" x 72" MIRROR	GENERIC	N/A	G.C.	G.C.	1
(C)	33" x 62" MIRROR*	GENERIC	N/A	G.C.	G.C.	1

NOTES:  
 1. CONTRACTOR SHALL VERIFY ALL QUANTITIES SHOWN. ALL DISCREPANCIES FOUND SHALL BE FORWARDED TO THE ATTENTION OF THE RUBY TUESDAY CONSTRUCTION DIRECTOR.  
 2. MIRRORS ARE TO BE POLISHED PLATE MIRRORS. \*F.V. SIZES PRIOR TO ORDERING!

### SEATING SUMMARY

TABLES/ SEATS PER TABLE	EQUIP. NO.	TABLE TYPE	NO. OF SEATS
12/ 2 TOP	(1306)	TABLE TOP 21" x 30" 1/4" LAMINATE FINISH	24
12/ 4 TOP	(1307)	TABLE TOP 21" x 44" 1/4" LAMINATE FINISH	48
4/ 4 TOP	(1310)	TABLE TOP 30" x 44" 1/4" LAMINATE FINISH	16
8/ 4 TOP	(1309)	TABLE TOP 30" x 30" 1/4" FLAM FLAKE BOARD TOP UNFINISHED 1/4" TABLE CLOTH	32
6/ 4 TOP	(1360)	TABLE TOP 30" x 44" 1/4" FLAM FLAKE BOARD TOP UNFINISHED 1/4" TABLE CLOTH	24
8/ 4 TOP	(1362)	TABLE TOP 32" x 32" FLIP TOP 1/4" FLAM FLAKE BOARD TOP UNFINISHED 1/4" TABLE CLOTH	32
2/ 4 TOP	(1364)	TABLE TOP 30" x 44" FLIP TOP REG. TABLE 1/4" FLAM FLAKE BOARD TOP UNFINISHED 1/4" TABLE CLOTH	8
4/ 4 TOP	(1367)	TABLE TOP 32" x 32" 1/4" FLAM FLAKE BOARD TOP UNFINISHED 1/4" TABLE CLOTH	16
		TOTAL SEATINGS FOR DINING & BAR AREA	200
	(1405)	BAR STOOLS	16
		EMPLOYEES TOTAL SEATING & EMPLOYEES	25
		TOTAL SEATING	241

SQUARE FOOTAGE CALCULATIONS		
77%	FRONT OF HOUSE:	3,703 S.F.
23%	BACK OF HOUSE:	1,216 S.F.
	TOTAL:	4,919 S.F.
	COOLER/FREEZER:	-267 S.F.
	S.F. PER DINING SEAT (TOTAL S.F./TOTAL TABLE SEATING)	24.0

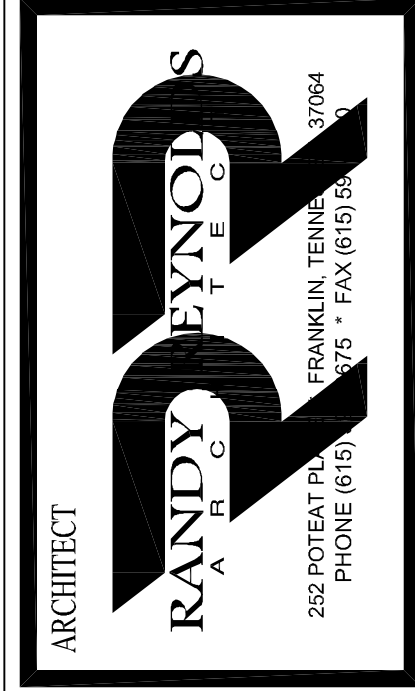
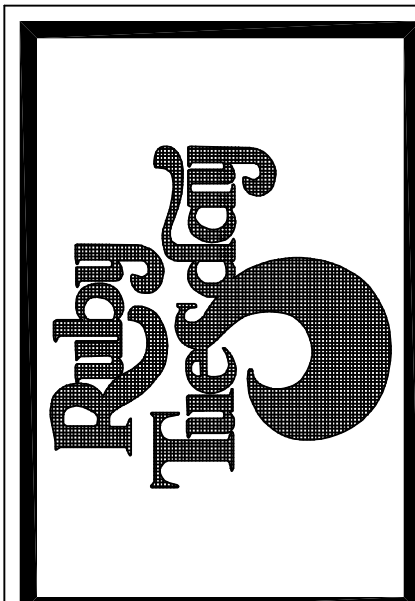
### KEY NOTES

- EQUIPMENT STOPS SHALL BE MOUNTED AT 10" A.F.F. BEHIND EQUIPMENT ITEM #3951 IN BAR AREA.
- LOCATE SOLENOID FOR SODA SYSTEM UNDER COCKTAIL UNITS IN BAR AREA.
- FOOD THERM
- PROVIDE WATER AND DRAIN FOR DIFFERENTIAL.
- COMMUNICATIONS BOARD. MOUNT AT 1'-0", FURNISHED BY OWNER AND INSTALLED BY CONTRACTOR.
- CARBONATORS AND SHELVING FURNISHED BY OWNER AND INSTALLED BY OWNER'S VENDOR. REMOVE 4" LEGS FROM UNIT AND PLACE MODULAR FARMER (5174) AS FAR BACK ON TABLE AS POSSIBLE. INSTALL STRAP OVER 5174 AND DO NOT ALLOW SCREWS TO BE PLACED IN EQUIPMENT. SCREEN STRAP TO TABLE SHELF ONLY.
- CONTRACTOR TO PROVIDE AND INSTALL (4) MENU BOXES PER DETAIL 6/A10.1. LOCATIONS SHOWN ARE FOR REFERENCE PURPOSES ONLY AND FINAL LOCATIONS SHOULD BE SELECTED BY STORE MANAGER PRIOR TO OPENING.
- PROPOSED LOCATION OF REMOTE FILL STATION FOR CO2 TANK. FINAL LOCATION TO BE VERIFIED, SUPPLIED, AND INSTALLED BY THE LOCAL CO2 SUPPLIER AS SELECTED BY THE RUBY TUESDAY FIELD REPRESENTATIVE.
- SERVICE CABINET - SEE DETAIL 4/A10.5
- SERVICE CABINET - SEE DETAIL 5/A10.5
- 4" PVC ROUTED UNDERGROUND FROM CO2 TANK TO SODA RACK #3916. USE LARGE RADIUS (24") ELEC. SWEEPS INSTALLED BY ELECTRICAL CONTRACTOR. NO PLUMBING FITTINGS.
- SODA LINES ROUTED IN ATTIC FROM SODA RACK #3916 TO SODA DISP. #3405. THE LINES WILL COME DOWN IN WALL TO SODA DISPENSERS.
- 6" PVC ROUTED UNDERGROUND FROM SODA DISPENSER #3405 TO COCKTAIL STATION #3912. USE LARGE RADIUS (24") ELEC. SWEEPS INSTALLED BY ELECTRICAL CONTRACTOR. NO PLUMBING FITTINGS.
- ROUTE BEER SYSTEM LINES FROM KEBS STORAGE AREA STRAPPED TO INSIDE COOLER WALL OVER TO BEER SYS. POWER PACK #3913. ROUTE LINES THROUGH WALL AT SIDE OF POWER PACK FOR CONNECTION. SEAL ALL PENETRATIONS AS REQ'D.
- 6" PVC ROUTED UNDERGROUND FROM KEBS STORAGE IN COOLER TO REMOTE BEER DISPENSER #3945 AT BAR. USE LARGE RADIUS (24") ELEC. SWEEPS INSTALLED BY ELEC. CONTRACTOR. NO PLUMBING FITTINGS.
- S.S. WALL GUARD TO 8'-0" A.F.F. ALL SIDES OF HOP SINK AREA.
- 2" SHAPES FURNISHED BY OWNER & INSTALLED BY CONTRACTOR IN ALL WINDOWS. MANUFACTURER WILL SUPPLY ALL PROPER MOUNTING HARDWARE WITH EACH UNIT. DO NOT ATTACH CLEAR CHAIN GUIDE PENETRATIONS AS REQ'D.
- INSTALL ALL SIGNAGE PER THE DIRECTION OF THE RUBY TUESDAY CONSTRUCTION DIRECTOR.
- FLY FAN - OPTIONAL - INSTALL ONLY WHEN LOCALLY REQUIRED. SEE MECH. DWSG. FOR SPECIFICATIONS. FURNISHED BY OWNER AND INSTALLED BY CONTRACTOR.
- CONTRACTOR TO PROVIDE 8" DIA. HOLE IN COUNTERTOP FOR TRASH RECEPTACLE.
- PAPER TOWEL HOLDER - SEE DETAIL 11/A10.1
- THE DIMENSIONS ARE PROVIDED TO LOCATE THE WALL MOUNTED GHEESEMELTERS.
- GREASE COLLECTION CONTAINER
- NOTE ADAPT ARCHT. TO VERIFY IF GALV. HOOD ASSEMBLIES ARE ALLOWED BY LOCAL MUNICIPALITY.
- SHADED AREA INDICATES DEDICATED SMOKING AREA
- SERVICE CABINET - SEE DETAIL 4/A10.5
- SERVICE CABINET - SEE DETAIL 9/A10.5

### GENERAL NOTES

- SEE SHEET K-2 FOR EQUIPMENT SCHEDULE AND EQUIPMENT NOTES.
  - ALL KITCHEN EQUIPMENT WILL BE FURNISHED AND ASSEMBLED BY THE OWNER. CONTRACTOR TO PROVIDE ALTERNATE PRICED TO ASSEMBLE.
  - CONTRACTOR SHALL FURNISH ALL REQUIRED LABOR NECESSARY TO RECEIVE, STORE, AND TO PLACE EQUIPMENT IN FINAL PERMANENT LOCATIONS AT DIRECTION OF OWNER'S REPRESENTATIVE.
  - CONTRACTOR SHALL BE RESPONSIBLE FOR ALL ELECTRICAL, GAS, AND PLUMBING CONNECTIONS.
  - ALL WOOD BLOCKING IN RESTROOMS AND ALL NON-PUBLIC AREAS SUCH AS KITCHEN, PREPARATION AREA, DISH WASHING, ETC. TO BE PRESERVE TREATED LUMBER.
  - SECURE ALL BAR SINKS, COCKTAIL STATIONS, HAND SINKS, KITCHEN SINKS TO WALL AND SEAL WITH CLEAR SILICONE.
  - NOTE: RESPONSIBILITIES OF CONSTRUCTION FOR MISC. KITCHEN EQ.
- GENERAL CONTRACTOR:**  
 ALL PERMS FOR POWER AND CONTROLS TO BE PROVIDED, INSTALLED AND CONNECTED FOR ALL KITCHEN EQUIPMENT.
- VENDOR AND/OR VENDOR'S SERVICE AGENT:**  
 -INSTALL ALL ICE MACHINES, MALKERS, AND REMOTE REFRIGERATION KITCHEN EQUIPMENT.  
 -INSTALL ALL REFRIGERATION LINES IN COORDINATION WITH THE CONTRACTOR. -START UP AND CALIBRATION OF THIS EQUIPMENT
- SPECIAL CARE SHALL BE GIVEN TO PROVIDE SUFFICIENT BLOCKING FOR ALL ITEMS. FASTENED TO STUD WALLS AND ALSO FOR FASTENING WOOD TRIM. THE CONTRACTOR SHALL ALSO REVIEW KITCHEN ELEVATIONS (K3 SHEETS), AND ALL DETAILS SHOWN FOR BLOCKING REQUIREMENTS AND ADD ANY BLOCKING REQUIRED FOR PROPER ANCHORAGE EVEN THOUGH NOT SPECIFICALLY SHOWN.
- CONTRACTOR IS TO PROVIDE WALL CONSTRUCTION IN KITCHEN AS FOLLOWS. (UNLESS NOTED OTHERWISE)
- 1/2" DUROCK TO 1'-0" A.F.F.
  - 1/2" OSB FROM 1'-0" TO 9'-0" ABOVE FINISH FLOOR.
- NOTE TO GENERAL CONTRACTOR: INSTALLATION OF KITCHEN EQUIPMENT IS BASED ON THE FOLLOWING JOB SITE CONDITIONS:
    - CLEAR ACCESS TO THE BUILDING FOR DELIVERY AND INSTALLATION.
    - WORK AREA IS CLEAN AND FREE OF TRASH.
    - ALL ROUGHINS ARE TO BE COMPLETE AND READY FOR FINAL CONNECTION AT THE TIME OF INSTALLATION.
    - FLOOR IS FINISHED, CLEANED AND READY FOR EQUIPMENT. WALLS ARE FINISHED AS SPECIFIED.
    - EQUIPMENT WILL BE SET IN PLACE ONCE ITEM IS READY FOR FINAL CONNECTION BY FOOD SERVICE CONTRACTOR. ANY LABOR TO MOVE EQUIPMENT OR RESET EQUIPMENT IS THE RESPONSIBILITY OF THE GENERAL CONTRACTOR & IS TO BE COORDINATED WITH OWNER'S REPRESENTATIVE.
  - SEE SHEET M1 FOR HOOD LOCATION DIMENSIONS.
  - INSTALLATION GUIDELINES FOR MALK-IN COOLERS/FREEZER:
    - THE GENERAL CONTRACTOR SHALL BE RESPONSIBLE FOR THE FOLLOWING ITEMS:
      - PROVIDE ALL ELECTRICAL WIRING AND CIRCUITS TO ALL EQUIPMENT
      - START UP AND CALIBRATION OF EQUIPMENT
      - PROVIDE ALL ASSOCIATED EQUIPMENT CURBS
      - FLASHEMENT OF ASSOCIATED ROOF TOP EQUIPMENT
      - PROVIDE AND INSTALL ALL REFRIGERANT AND CONDENSATE PIPING AND ASSOCIATED PIPE INSULATION AS SPECIFIED.
      - CHARGE AND PUT INTO OPERATION ALL REFRIGERANT PIPING BETWEEN REMOTE CONDENSING UNITS AND COOLERS/FREEZER
      - PROVIDE AND INSTALL SLOPED QUARRY TILE AND WALL BASE IN COOLER FLOORS
      - INSTALL ALL WORK IN ACCORDANCE WITH MANUFACTURER'S RECOMMENDATIONS.
    - MALK-IN COOLERS AND FREEZER VENDOR SHALL BE RESPONSIBLE FOR THE FOLLOWING ITEMS:
      - COORDINATE WITH GENERAL CONTRACTOR FOR DELIVERY, STORAGE AND INSTALLATION PROCEDURES.
      - PROVIDE ALL REMOTE CONDENSING UNITS AND ALL COOLER/FREEZER WALLS AND ASSOCIATED MATERIALS.
      - PROVIDE ALL INTERIOR COOLER/FREEZER LIGHTING AND SWITCHES
      - PROVIDE ALL COOLER/FREEZER DOORS AND HARDWARE

MARK	REVISION	DATE
GLAZING	8.24.05	

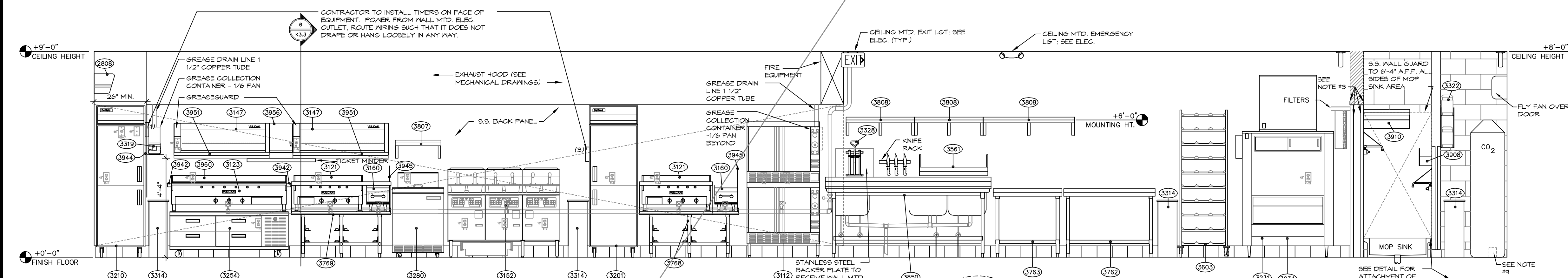


SEAL

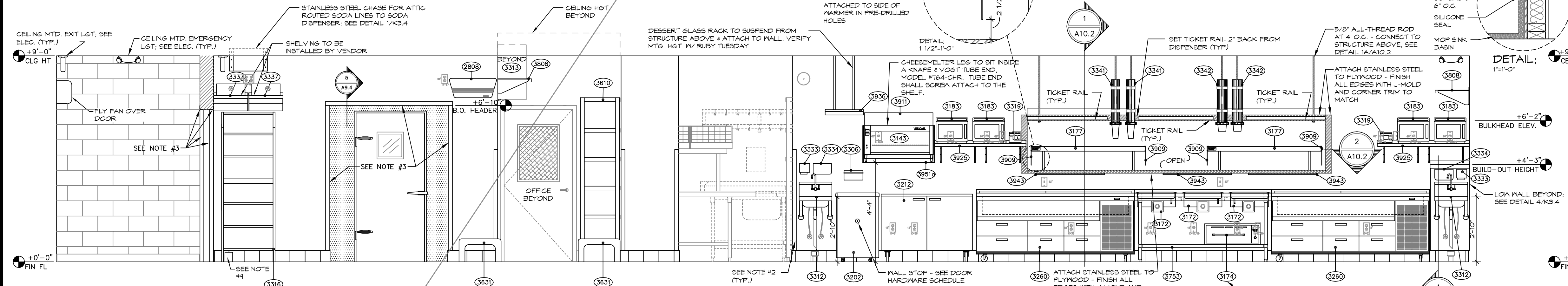
KITCHEN ELEVATIONS  
 RUBY TUESDAY # 4734  
 1-10E SERVICE ROAD at TYLER DRIVE  
 LOUISIANA  
 SLIDELL

RRR PROJECT NUMBER	0521
ISSUE FOR REVIEW	JULY 22, 2005
ISSUE FOR CONSTRUCTION	
CHECKED BY	RR
SCALE	AS NOTED
SHEET NUMBER	K-3.1

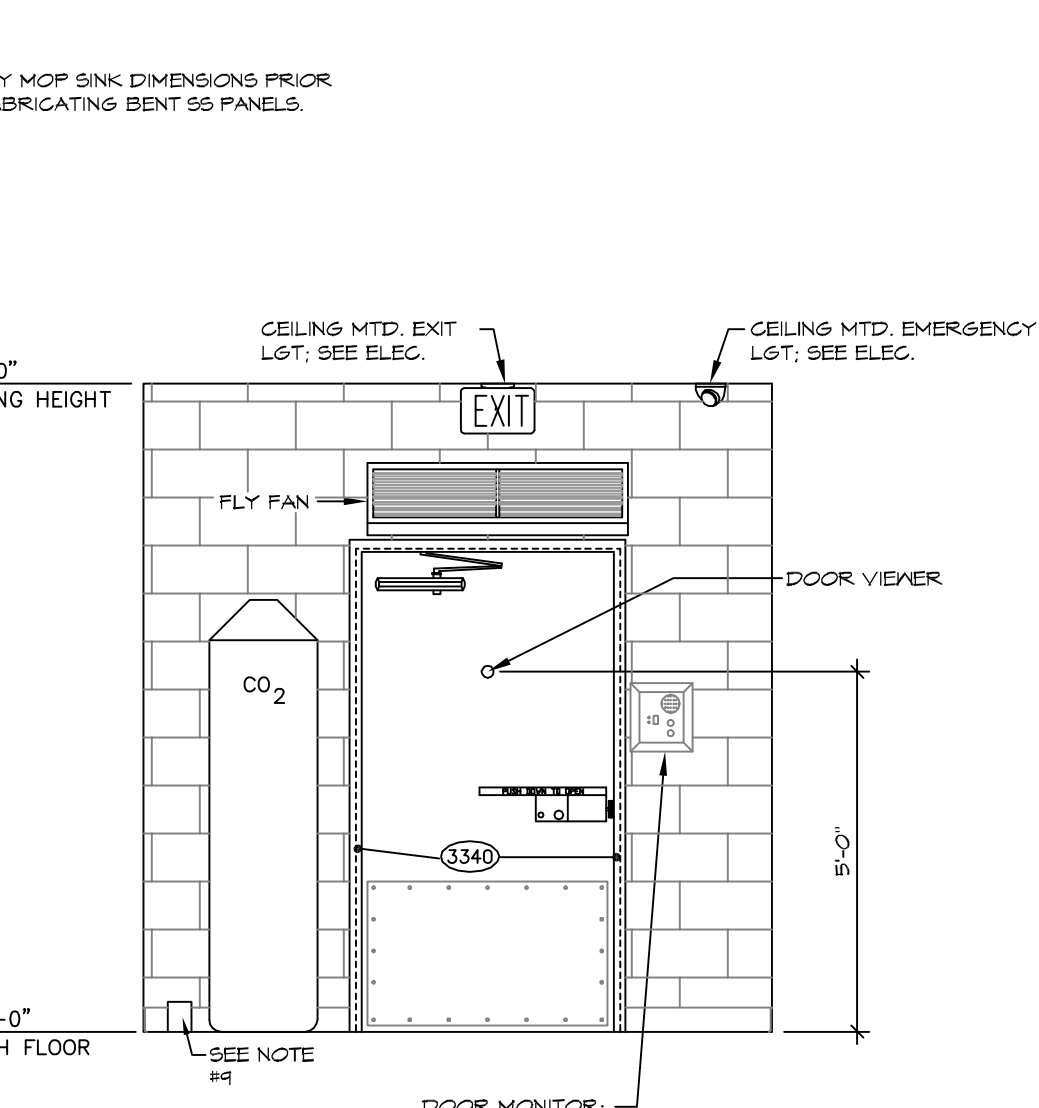
- ### KEYNOTES
- SEE SHEET K-2 FOR EQUIPMENT SCHEDULE, EQUIPMENT NOTES, EQUIPMENT BLOCKING SCHEDULE AND RESTROOM ACCESSORY SCHEDULE.
  - INSTALL 2" X 2" (5.5") CORNER GUARDS TO 5'-0" A.F.F. OVER 5.5" BASE GUARD AS PER DETAIL 3/K3.4. INSTALL ON ALL CORNERS IN KITCHEN, FBG/BC, SEAL WITH SILICONE.
  - INSTALL 2" X 2" STAINLESS STEEL ANGLE AROUND JAMB AND HEAD. SET IN SILICONE FBG/BC.
  - EQUIPMENT STOPS SHALL BE MOUNTED AT 19" A.F.F. BEHIND EQUIPMENT IN BAR AREA.
  - 6" PVC Routed UNDERGROUND FROM SODA DISPENSER #3405 TO COCKTAIL STATION #3512 AT BAR. USE LARGE RADIUS (24") ELEC. SWEEPS INSTALLED BY ELEC. CONTRACTOR. NO PLUMBING FITTINGS.
  - ROUTE BEER SYSTEM LINES FROM KEG STORAGE AREA STRAPPED TO INSIDE COOLER WALL OVER TO BEER SYS. POWER PACK #3318. ROUTE LINES THROUGH WALL AT SIDE OF POWER PACK FOR CONNECTION SEAL. ALL PENETRATIONS AS REQ'D.
  - 6" HOLE IN ESCUTCHEON FLANGE THROUGH WALL FOR ATTIC Routed SODA LINES FROM SODA RACK #3321 TO SODA DISPENSER #3405.
  - 6" PVC Routed UNDERGROUND FROM KEG STORAGE IN COOLER TO REMOTE BEER DISPENSER #3541 AT BAR USE LARGE RADIUS (24") ELEC. SWEEPS INSTALLED BY ELEC. CONTRACTOR. NO PLUMBING FITTINGS.
  - 4" PVC Routed UNDERGROUND FROM CO2 TANK TO SODA RACK #3316. USE LARGE RADIUS (24") ELEC. SWEEPS INSTALLED BY ELECTRICAL CONTRACTOR. NO PLUMBING FITTINGS.



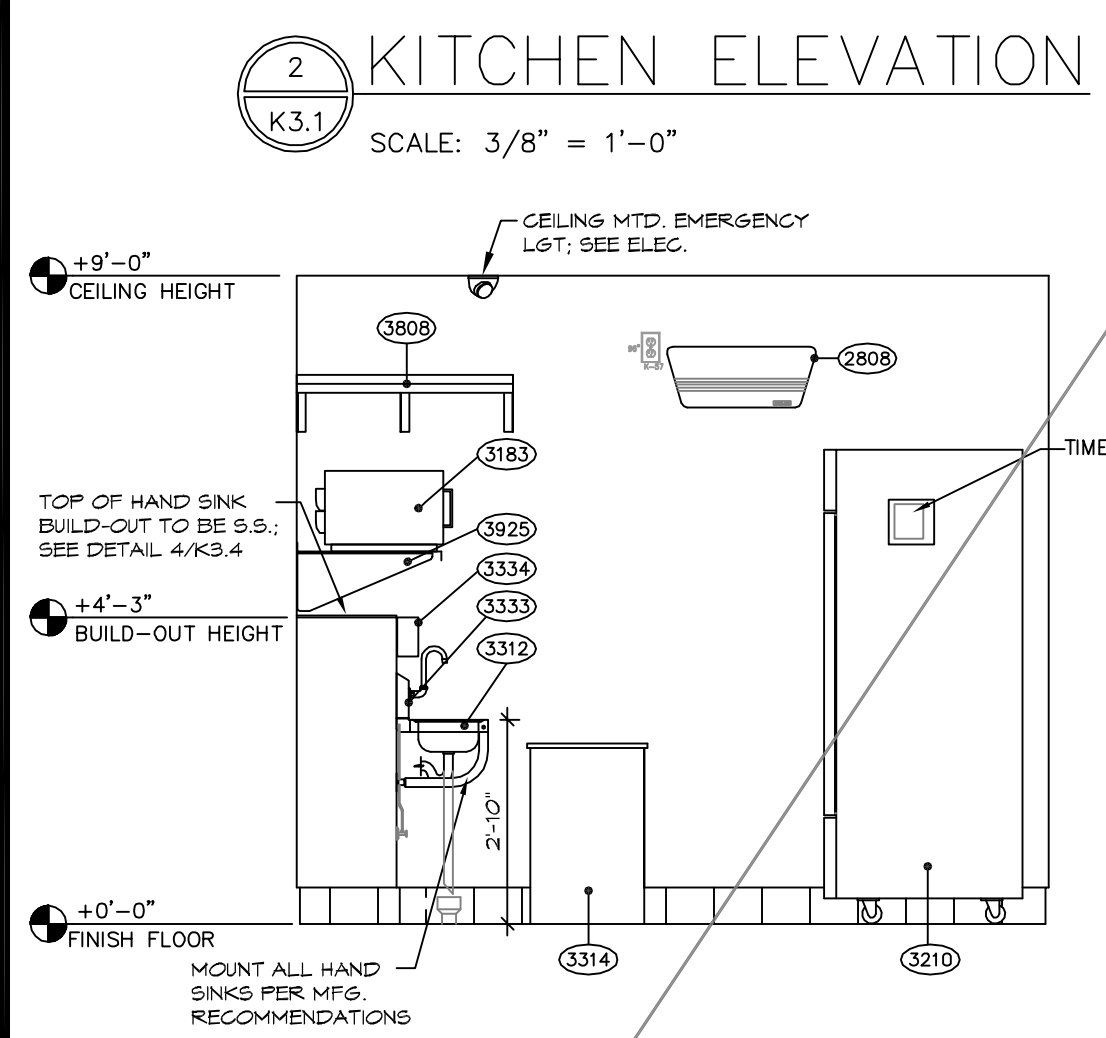
**1 KITCHEN ELEVATION**  
K3.1 SCALE: 3/8" = 1'-0"



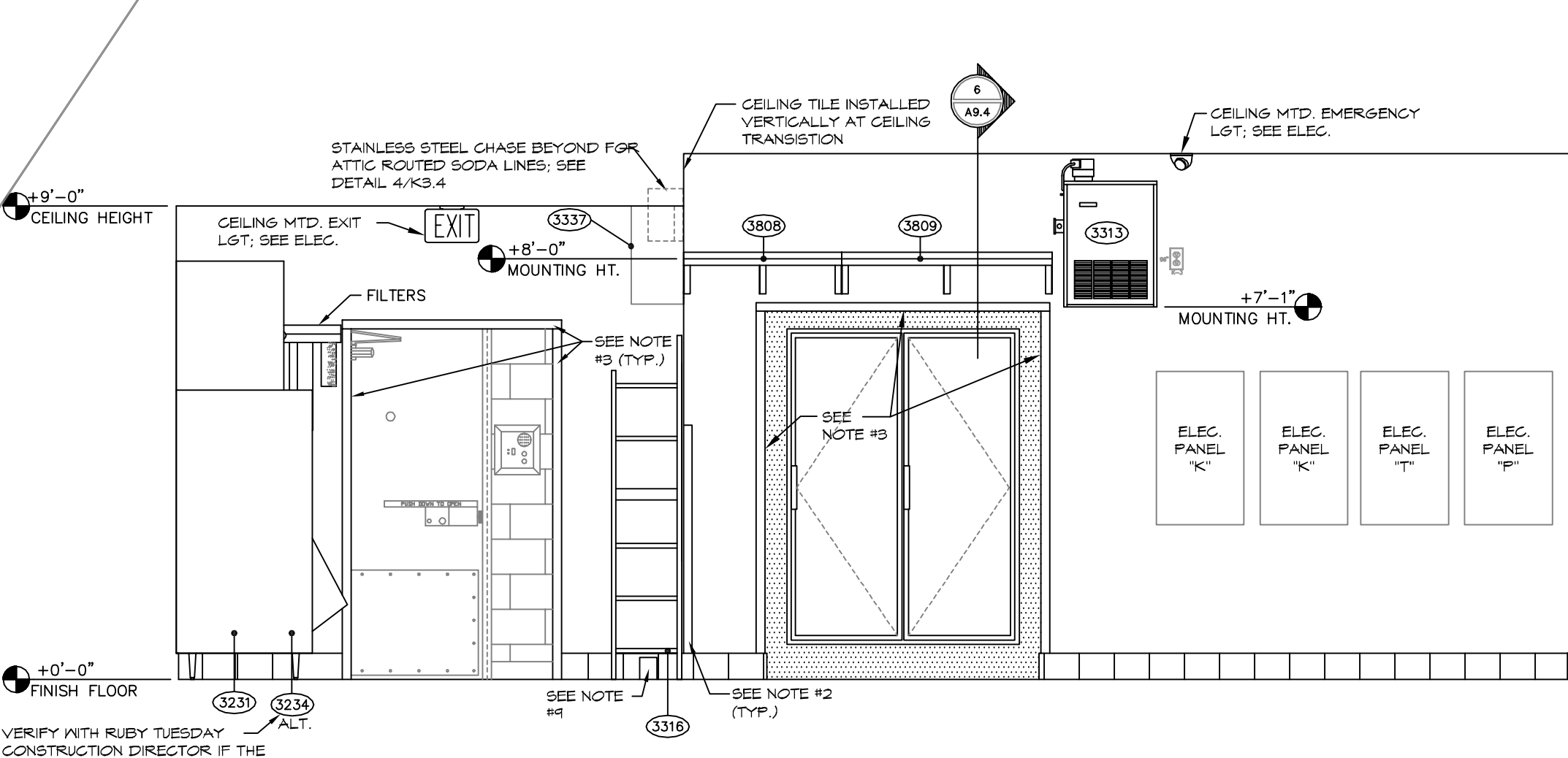
**2 KITCHEN ELEVATION**  
K3.1 SCALE: 3/8" = 1'-0"



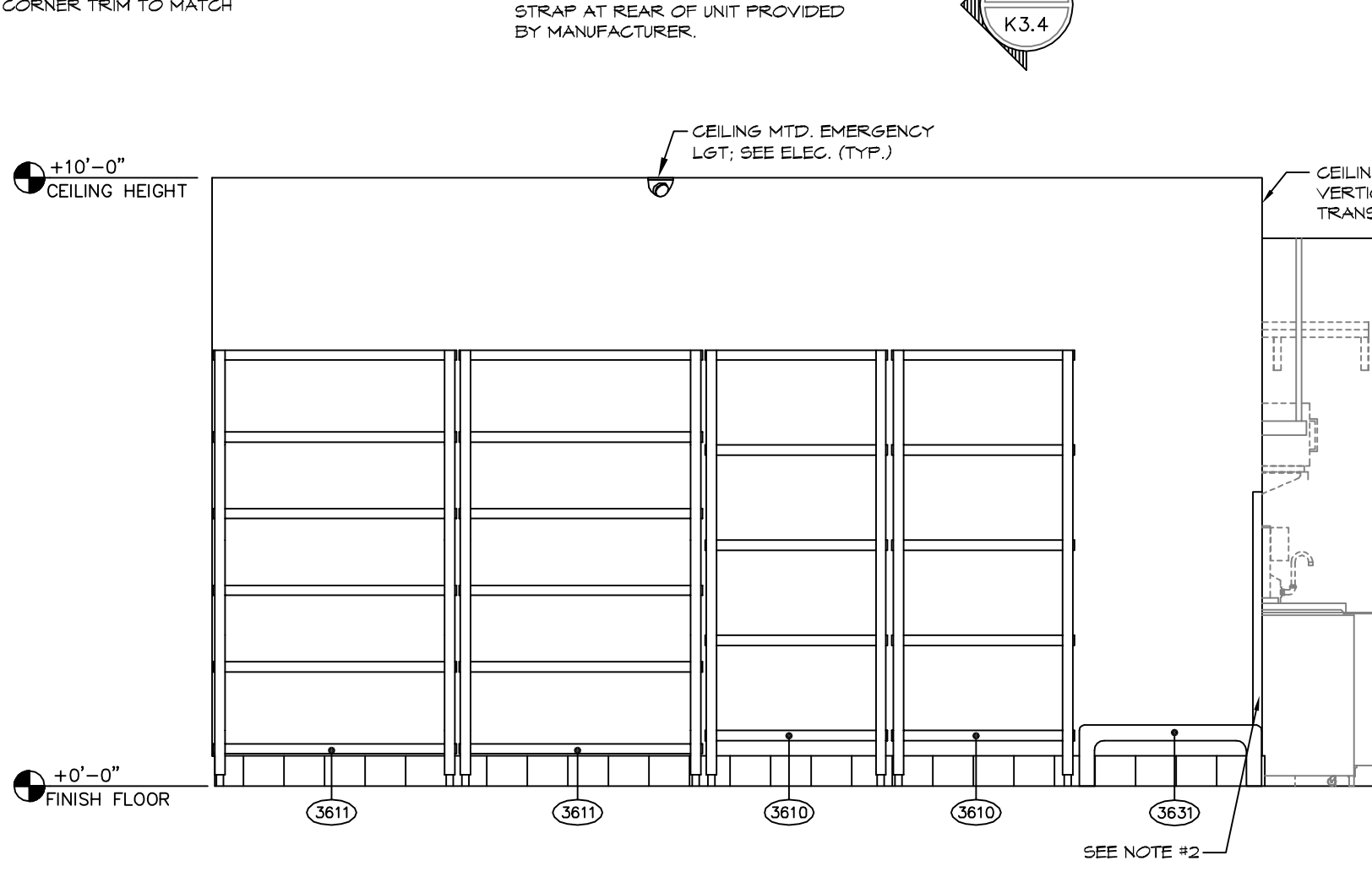
**3 KITCHEN ELEVATION**  
K3.1 SCALE: 3/8" = 1'-0"



**4 KITCHEN ELEVATION**  
K3.1 SCALE: 3/8" = 1'-0"



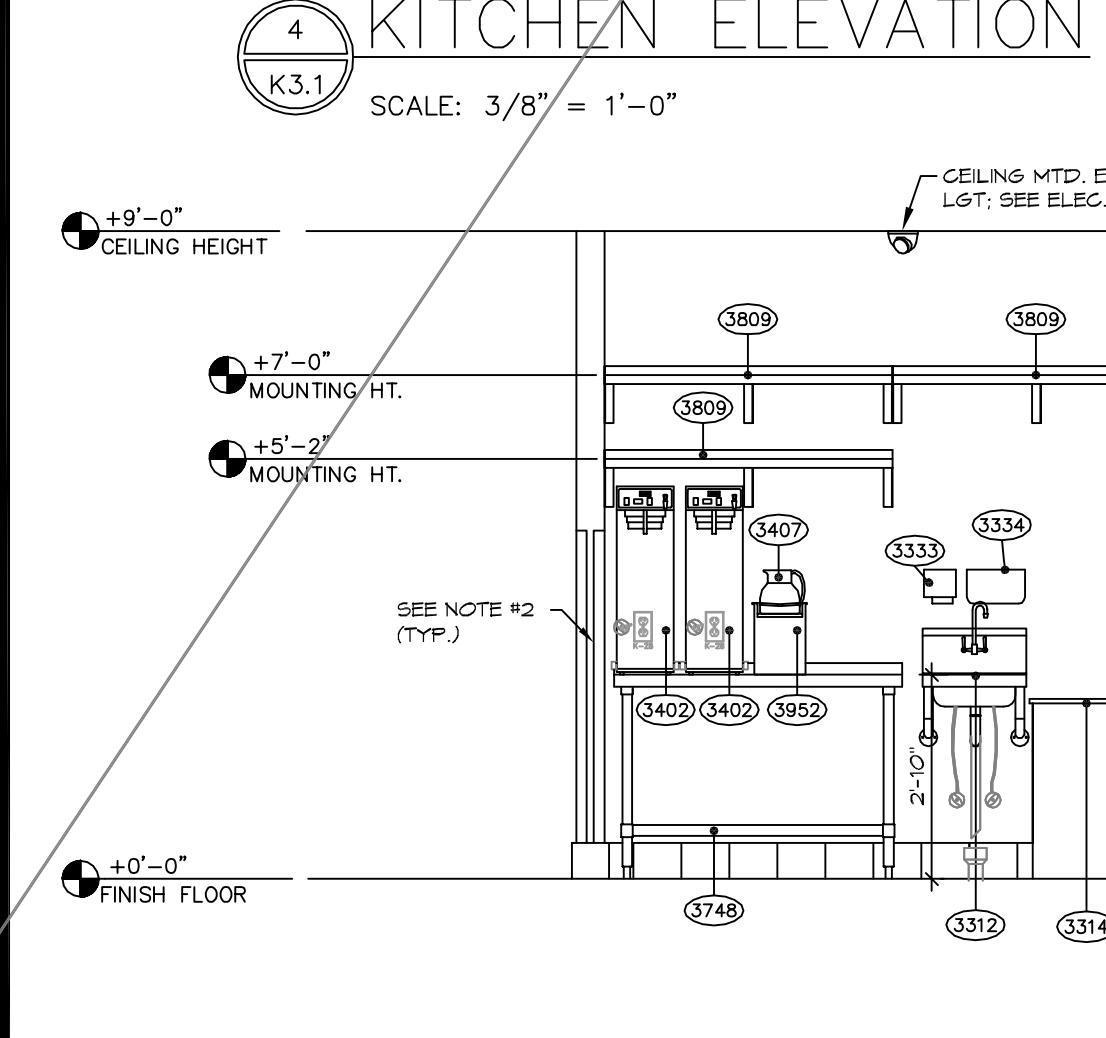
**5 KITCHEN ELEVATION**  
K3.1 SCALE: 3/8" = 1'-0"



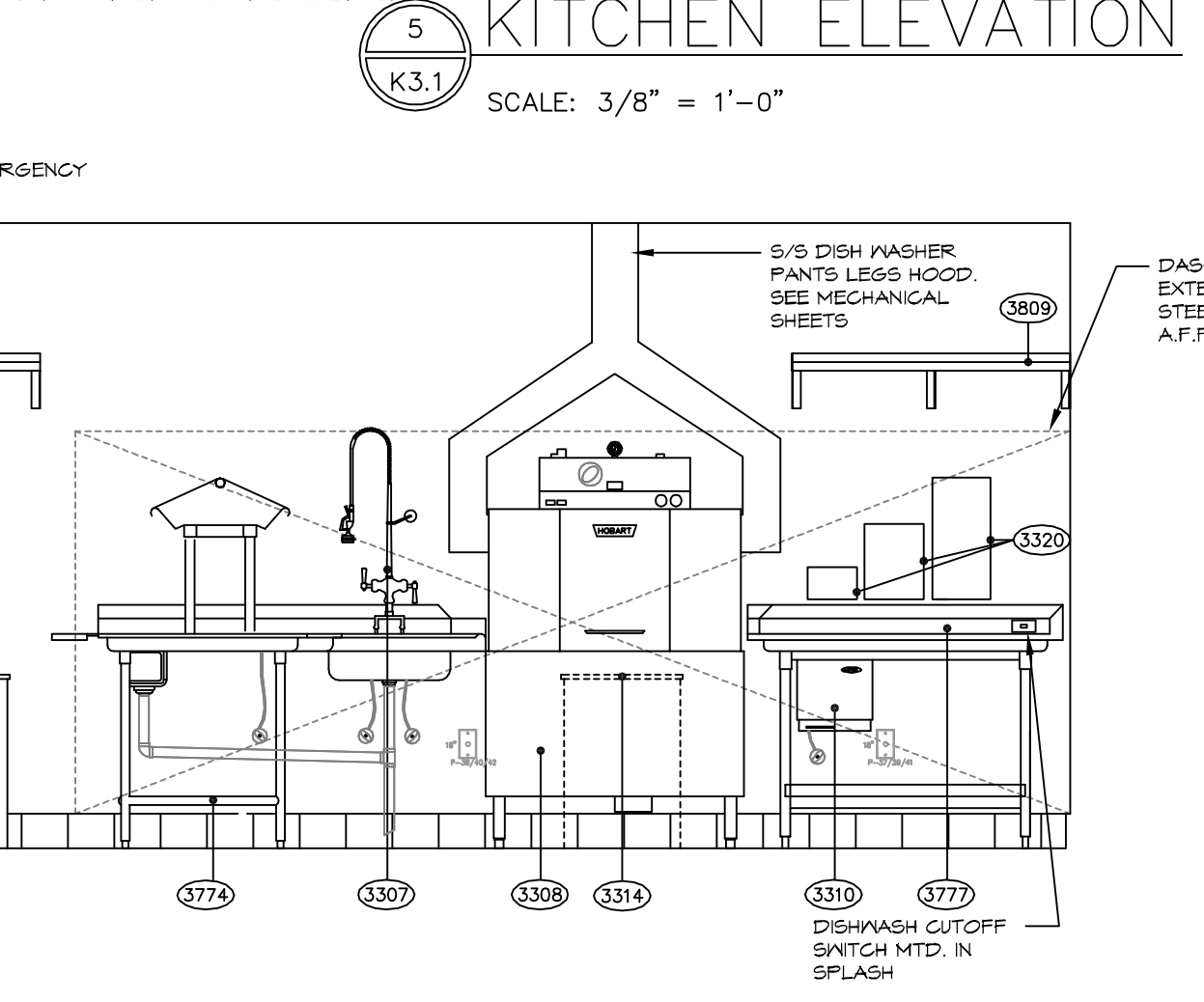
**6 KITCHEN ELEVATION**  
K3.1 SCALE: 3/8" = 1'-0"

### ELEC. LEGEND

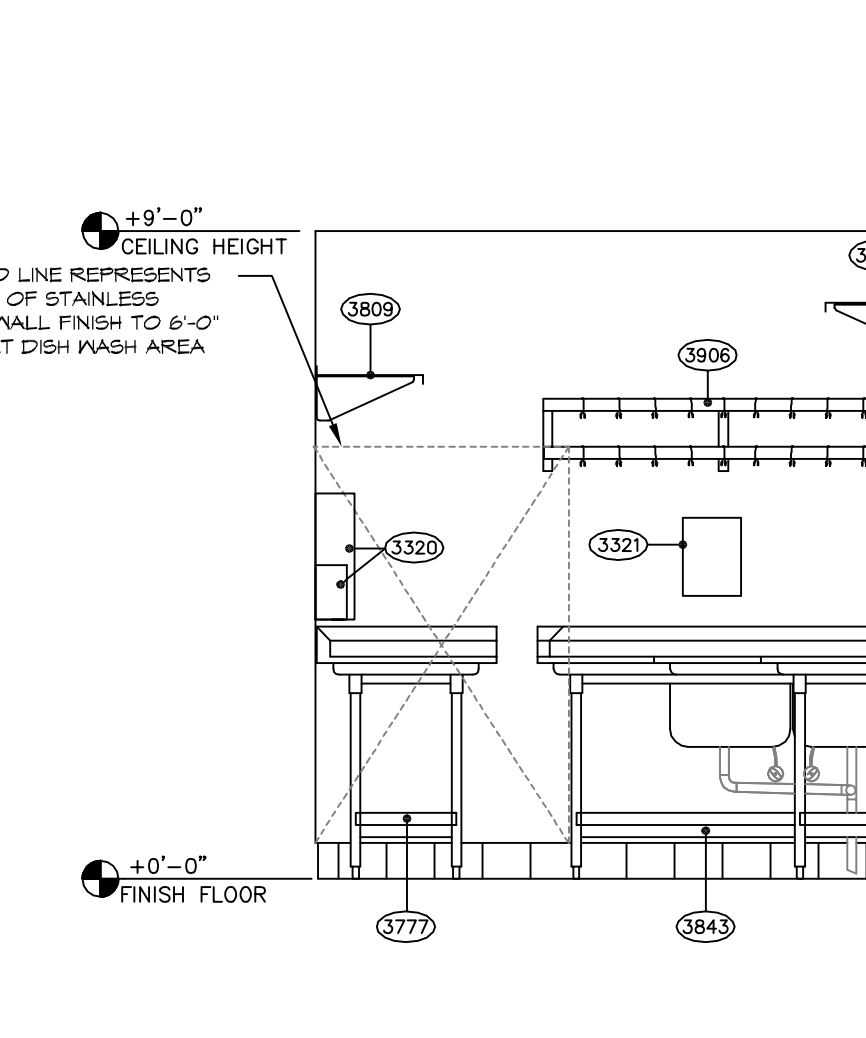
[Symbol]	120V 20A RECEPTACLE
[Symbol]	DOUBLE DUPLEX
[Symbol]	208V 20A RECEPTACLE
[Symbol]	PHONE/FAX/MODEM JACK
[Symbol]	JUNCTION BOX
[Symbol]	20 AMP TOGGLE SWITCH
[Symbol]	DIMMER SWITCHES
[Symbol]	THERMOSTAT



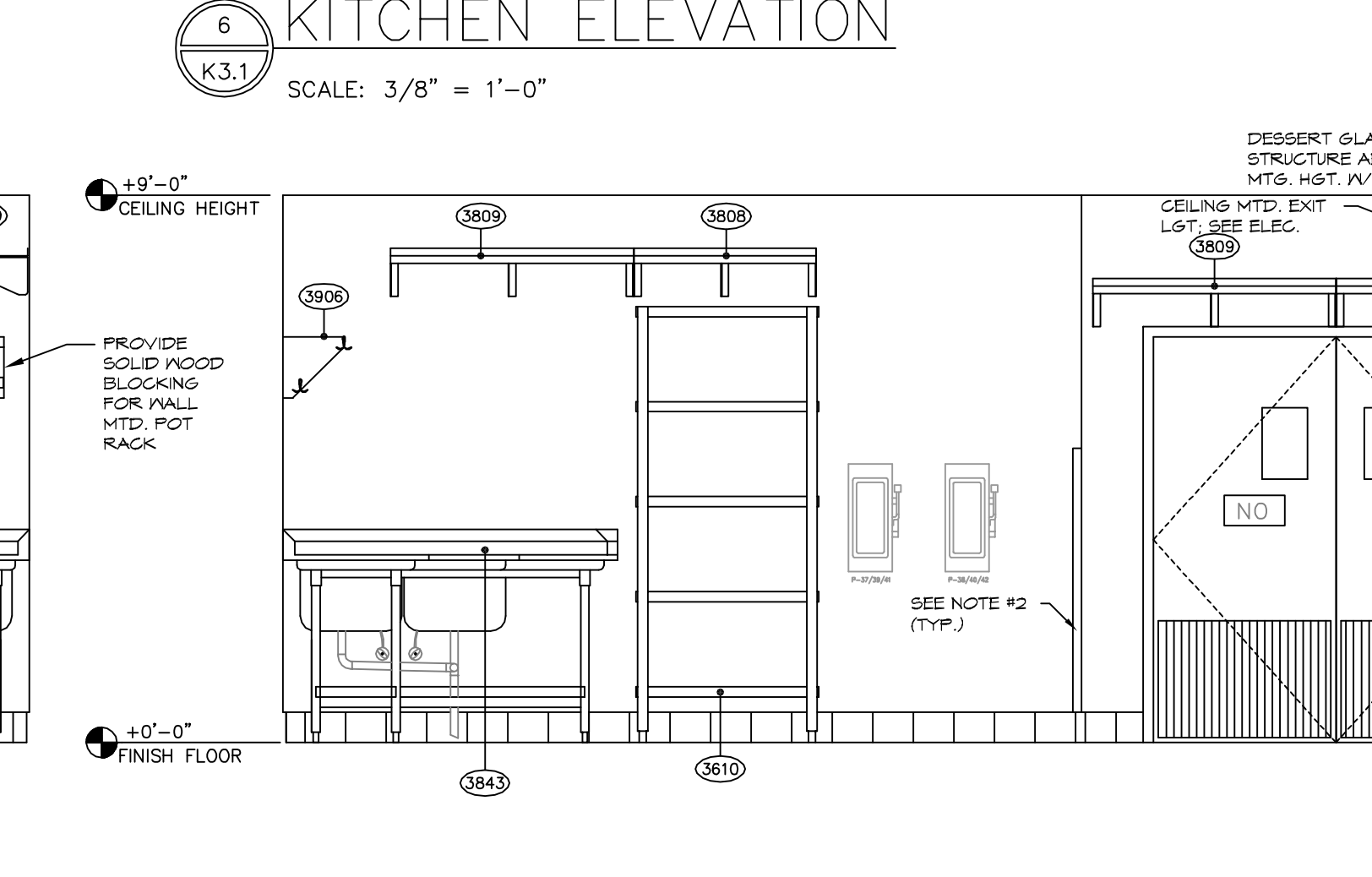
**7 KITCHEN ELEVATION**  
K3.1 SCALE: 3/8" = 1'-0"



**8 KITCHEN ELEVATION**  
K3.1 SCALE: 3/8" = 1'-0"

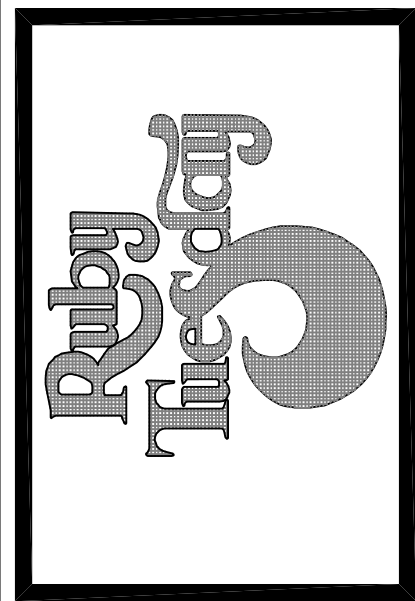


**9 KITCHEN ELEVATION**  
K3.1 SCALE: 3/8" = 1'-0"



**10 KITCHEN ELEV.**  
K3.1 SCALE: 3/8" = 1'-0"

MARK	REVISION	DATE
1	DW/BOOSTER HEATER	9/29/05

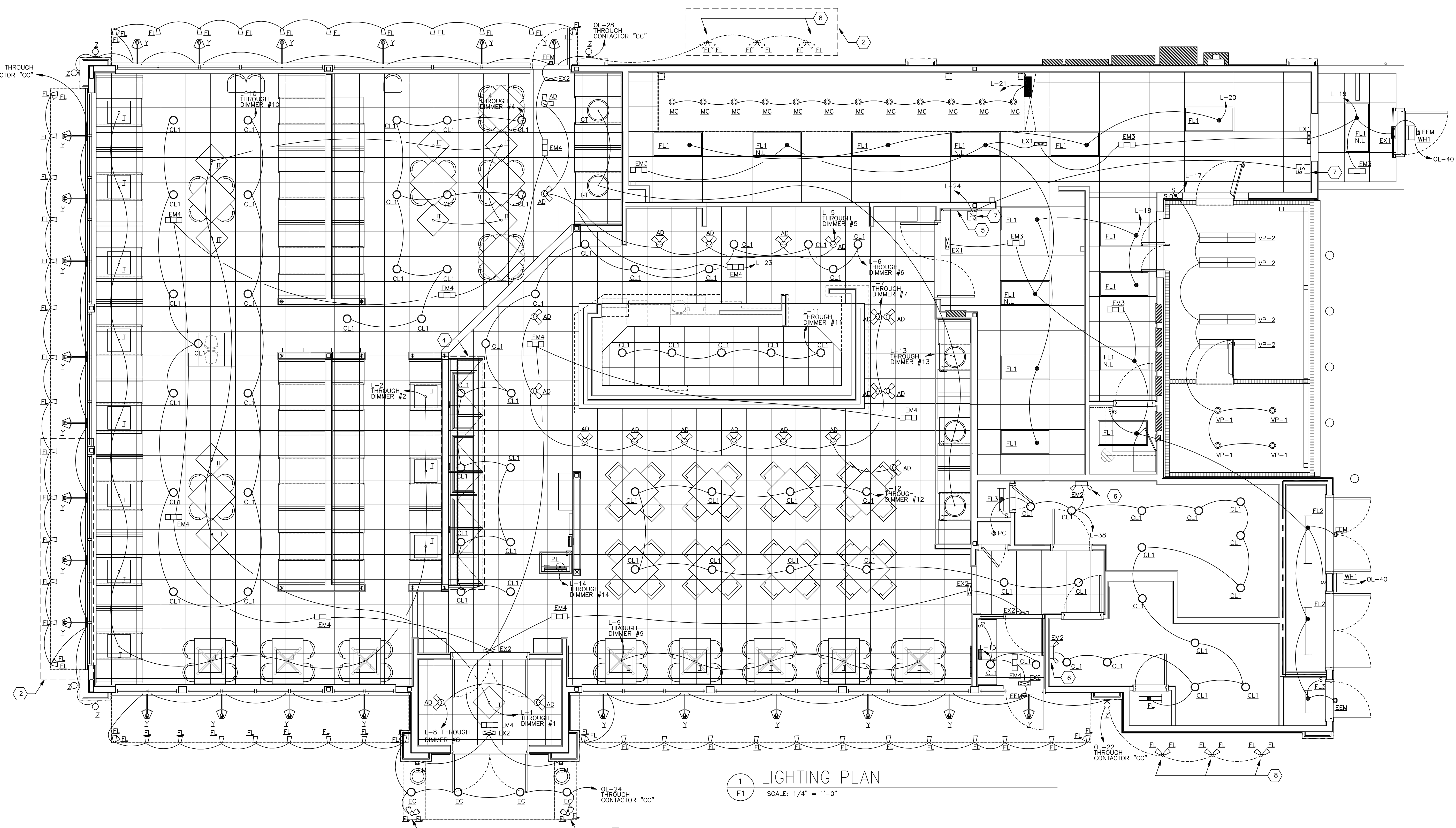


**Kurzynske & Associates**  
 825 Third Avenue, South  
 Nashville, TN 37203  
 (615) 255-5203

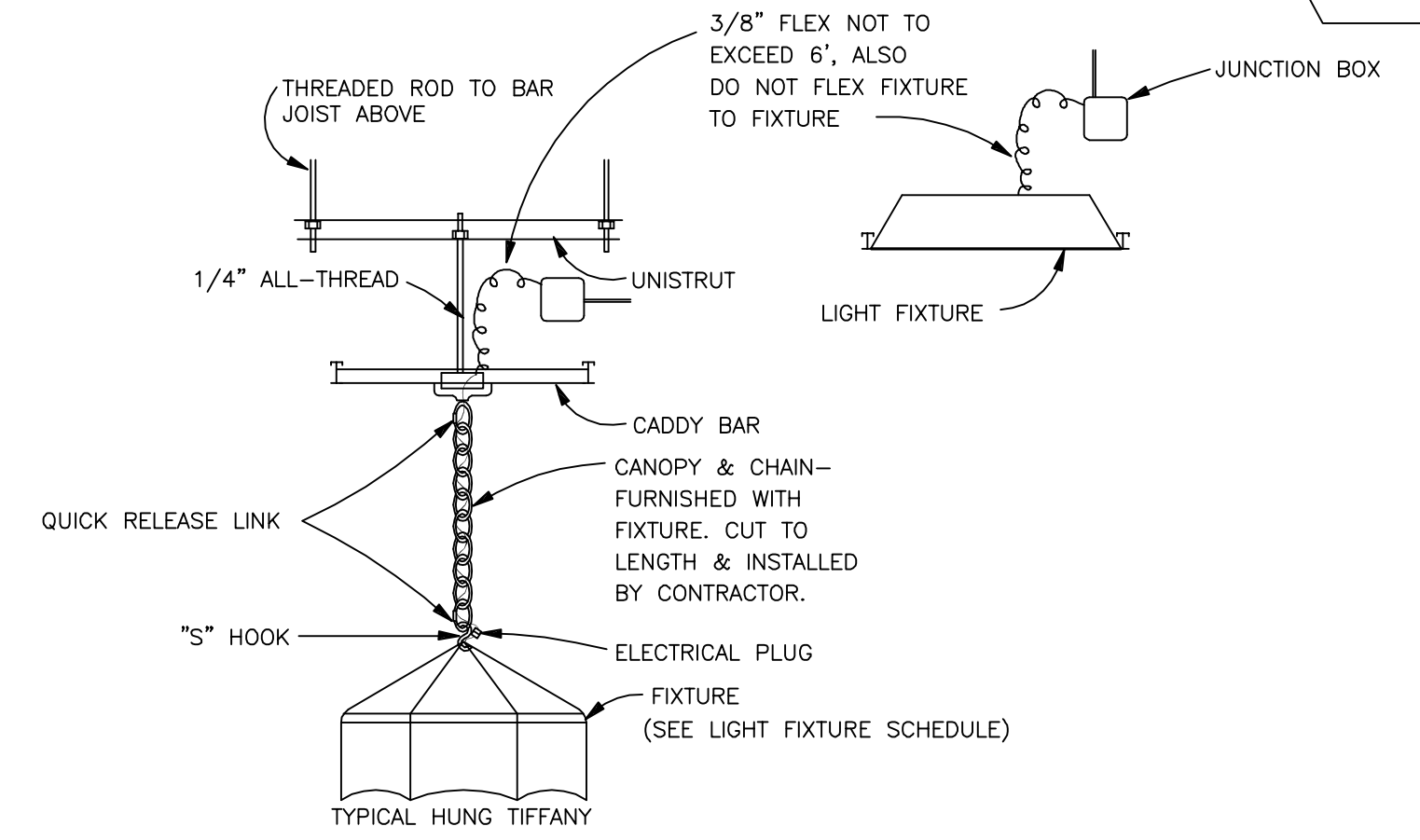
SEAL OF LOUISIANA  
 PROFESSIONAL ENGINEER  
 CURTIS ANTONIO  
 License No. 2887

ELECTRICAL LIGHTING PLAN  
 RUBY TUESDAY # 47  
 I-10E SERVICE ROAD at TYLER DRIVE (I-10 at SLIDELL)

K&A PROJECT NUMBER RT0522
ISSUE FOR REVIEW JULY 22, 2005
ISSUE FOR CONSTRUCTION
CHECKED BY
SCALE AS NOTED
SHEET NUMBER E-1



1 LIGHTING PLAN  
 SCALE: 1/4" = 1'-0"



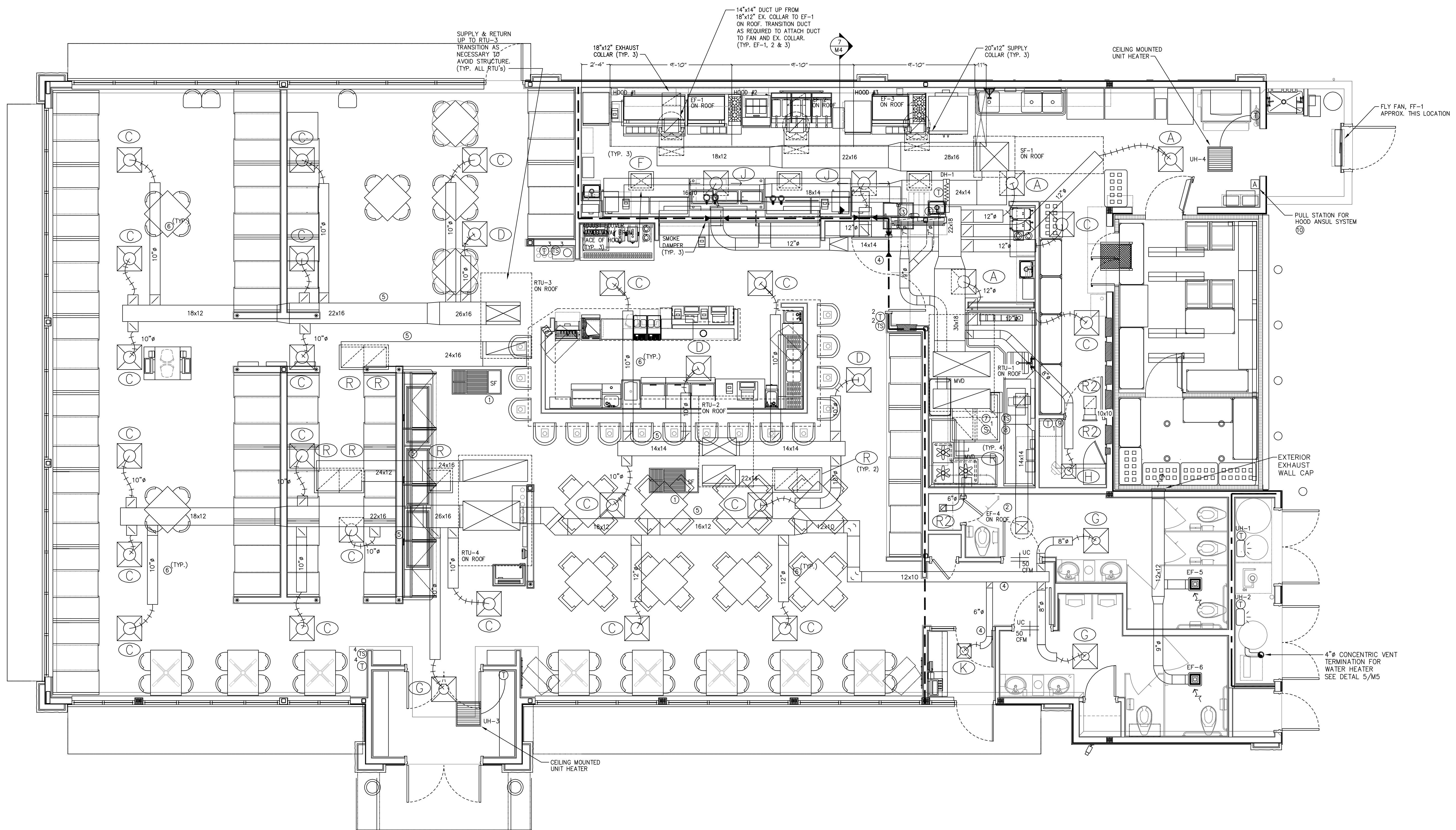
2 LIGHT FIXTURE HANGING DETAILS  
 NOT TO SCALE

- 3 GENERAL LIGHTING NOTES
- ALL PENDANT LIGHT FIXTURES MUST BE CENTERED OVER TABLES OR BOOTHS. COORDINATE EXACT LOCATION WITH ARCHITECTURAL PLANS PRIOR TO INSTALLATION.
  - LIGHTING CIRCUIT HOME RUNS MAY BE COMBINED AS ALLOWED BY NEC. CONDUITS TO BE SIZED PER NEC.
  - ALL LIGHTING SWITCHES, DIMMERS, VOLUME CONTROLS AND "STATS" IN PUBLIC AREAS SHALL BE MOUNTED NO HIGHER THAN 42 3/4" TO TOP OF JUNCTION BOX UNLESS OTHERWISE NOTED.
  - ALL LIGHT SWITCHES, DIMMERS, AND RECEPTACLES IN DINING AREA TO BE DARK BROWN WITH DARK BROWN FACE PLATES.
  - ALL LIGHT SWITCHES, DIMMERS, AND RECEPTACLES IN OFFICE AREA TO BE IVORY WITH IVORY FACE PLATES.
  - ALL LIGHT SWITCHES, DIMMERS, AND RECEPTACLES IN KITCHEN AREA TO BE IVORY WITH STAINLESS FACE PLATES.
  - ELECTRICAL CONTRACTOR TO COORDINATE WITH LOCAL INSPECTORS FOR FINAL LOCATIONS OF ALL EMERGENCY AND EXIT LIGHTS. IT SHALL BE THE RESPONSIBILITY OF THE CONTRACTOR TO SUPPLY AND INSTALL ANY ADDITIONAL EXIT OR EMERGENCY LIGHTS THAT MAY BE REQUIRED.

3 GENERAL LIGHTING NOTES  
 NOT TO SCALE

- 4 SHEET KEY NOTES
- NOT USED.
  - LIGHTS FIXTURE TYPE "FL" ARE INSTALLED WITH OPTIONAL SIGN PACKAGE THAT IS NOT INTERNALLY ILLUMINATED.
  - FIXTURE TYPE "FL" ARE MOUNTED ON TOP OF CANOPY.
  - SEE DETAILS 2 SHEET E2 FOR SALAD BAR POWER AND LIGHTING.
  - LOCATION OF DIMMERS, SEE DETAIL 6 SHEET E4.
  - CIRCUIT EMERGENCY LIGHT AHEAD OF SWITCH.
  - SEE LIGHTING CONTROL DIAGRAM ON SHEET E10.
  - GROUND MOUNTED LIGHTS. SEE DETAIL 8 SHEET E14.
  - NOT USED.

4 SHEET KEY NOTES  
 NOT TO SCALE



1 MECHANICAL HVAC PLAN  
 M1 SCALE: 1/4" = 1'-0"

- MECHANICAL KEYNOTES**
- SMOKE FILTER - SEE M2 FOR SCHEDULE, MOUNT BETWEEN JOISTS
  - 14"x14" DUCT UP TO EF-4, TRANSITION AS REQUIRED TO ATTACH DUCT TO DISHWASHER EXHAUST COLLAR
  - ROUTE 7" RETURN DUCTS IN TO DIMMER SWITCH CHASE WALL. SEAL TOP OF WALL AND CHASE TO PREVENT LEAKAGE AND PROVIDE 12"x12" GRILLE (SEE R2 - AIR DEVICE SCHEDULE - SHEET M2) 12" A.F.F. (ON DINING ROOM SIDE) BETWEEN THE TWO STUDS THAT CONTAIN DIMMER SWITCHES.
  - CONTRACTOR SHALL SEAL DUCTWORK PENETRATION OF DRAFTSTOP
  - ROUTE DUCTWORK BETWEEN JOISTS
  - ROUTE SUPPLY RUN-OUTS IN JOIST WEBS
  - MOUNT AIR SENSOR IN RETURN DUCTWORK
  - CEILING MOUNTED REMOTE TEST STATION
  - MOUNT THERMOSTAT FOR RTU-1 IN OFFICE.
  - RECESSED AND COVERED PULL STATION BY BROOKS EQUIPMENT CO. 1-800-826-3473 PULL STATION COVER - ST1200

- DUCTWORK NOTES**
- DUCTWORK SHALL BE CONSTRUCTED AND INSTALLED AS SPECIFIED IN SECTION 15500, PART2, PRODUCTS, I. SHEET METAL WORK & SECTION 15500, PART2, PRODUCTS, II. FIBROUS GLASS BOARD DUCT.
  - DUCT BOARD MAY BE USED IN THE DINING AREA ONLY WHEN COMPLETELY CONCEALED ABOVE CEILING. IT MAY NOT BE USED IN KITCHEN OR FOR ANY EXHAUST DUCT OR DUCT THAT IS EXPOSED.
  - MECHANICAL CONTRACTOR SHALL VERIFY WITH GENERAL CONTRACTOR ALL MECHANICAL SYSTEMS AND DUCTWORK SHALL NOT PREVENT INSTALLED CEILING HEIGHTS FROM BEING AS DESIGNED.

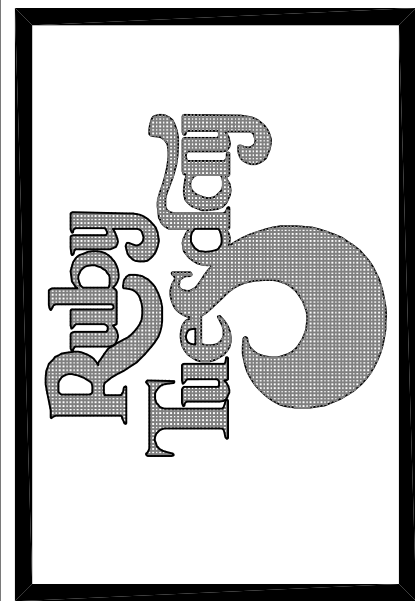
**OFFICE CEILING HEIGHT**

THE CEILING IN THE OFFICE IS TO BE INSTALLED AT MAXIMUM HEIGHT. MECHANICAL CONTRACTOR TO INSTALL ALL DUCTWORK TIGHT TO STRUCTURE IN THIS AREA TO ENSURE CEILING CAN BE INSTALLED AS HIGH AS POSSIBLE.

**HVAC SMOKE DETECTORS**

- MECHANICAL CONTRACTOR TO COORDINATE WITH FIRE ALARM CONTRACTOR TO ENSURE HVAC SMOKE DETECTORS ARE COMPATIBLE WITH THE FIRE ALARM SYSTEM (IF REQUIRED).

MARK	REVISION	DATE
A	DW/BOOSTER HEATER	9/29/05



**Kurzynske & Associates**  
 825 Third Avenue, South  
 Nashville, TN 37203  
 (615) 255-5203

ENGINEER



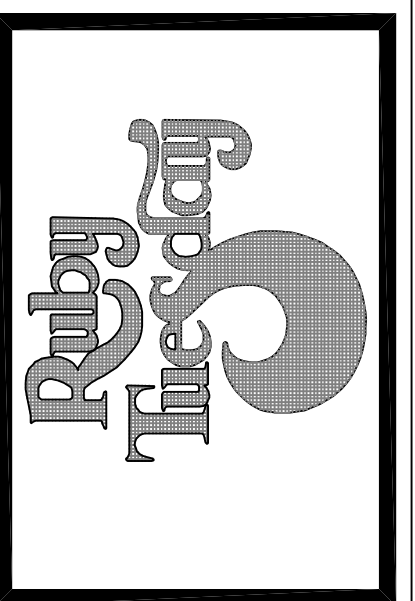
MECHANICAL HVAC PLAN

RUBY TUESDAY # 47

1-10E SERVICE ROAD at TYLER DRIVE (1-10 at SLIDELL

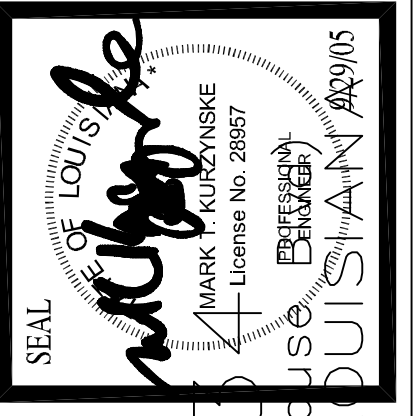
K&A PROJECT NUMBER RT0522
ISSUE FOR REVIEW JULY 22, 2005
ISSUE FOR CONSTRUCTION
CHECKED BY
SCALE AS NOTED
SHEET NUMBER M-1

MARK	REVISION	DATE
1	DW/BOOSTER HEATER	9/29/05



**Kurzynske & Associates**  
 825 Third Avenue, South  
 Newville, (615) 255-5203

ENGINEER

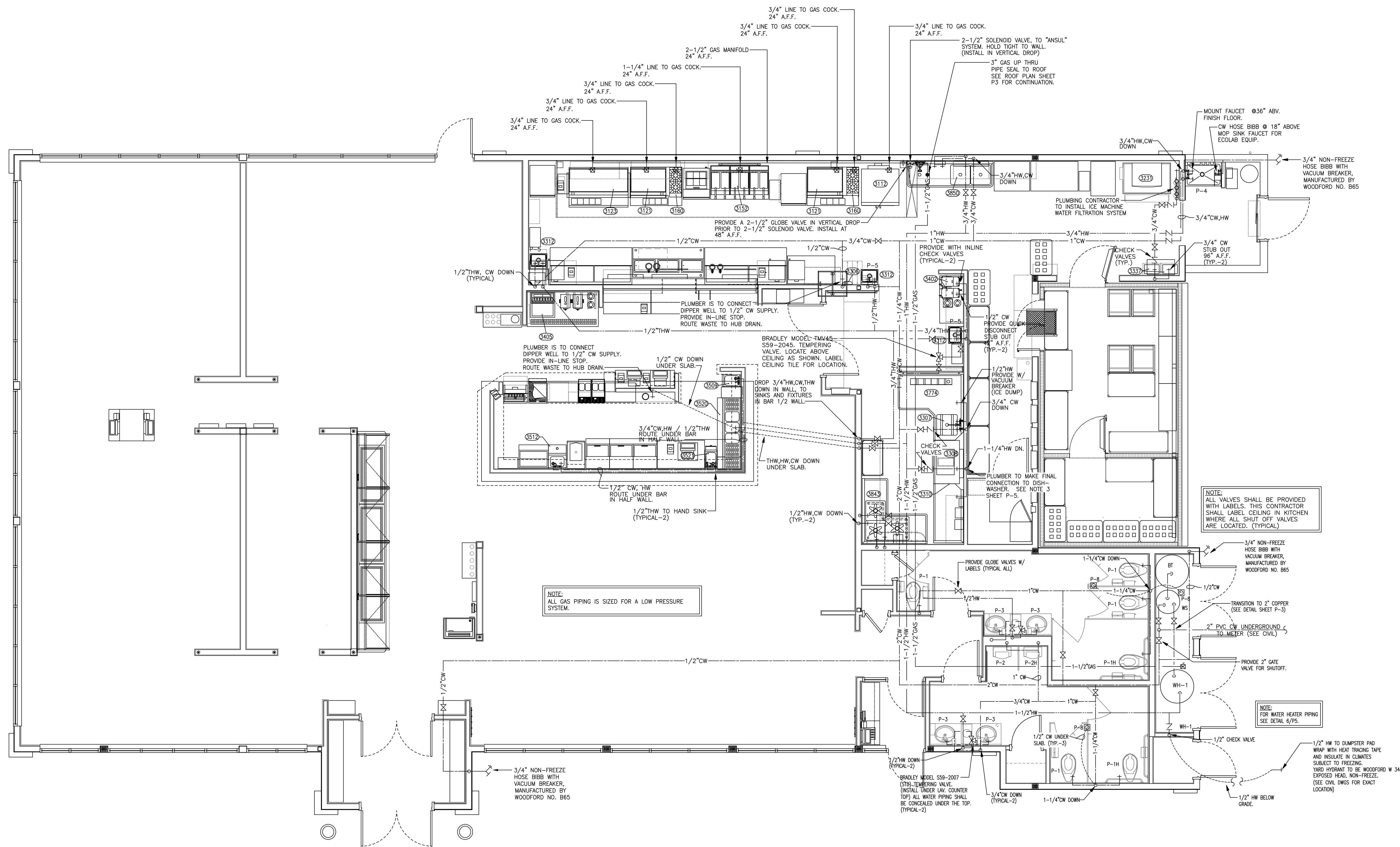


PLUMBING WATER & GAS PLAN

RUBY TUESDAY # 47

1-10E SERVICE ROAD at TYLER DRIVE (1-10 at SLIDELL)

K&A PROJECT NUMBER RT0522
ISSUE FOR REVIEW JULY 22, 2005
ISSUE FOR CONSTRUCTION
CHECKED BY
SCALE AS NOTED
SHEET NUMBER P-1



1 WATER & GAS PLAN  
 P1 SCALE: 1/4"=1'-0"