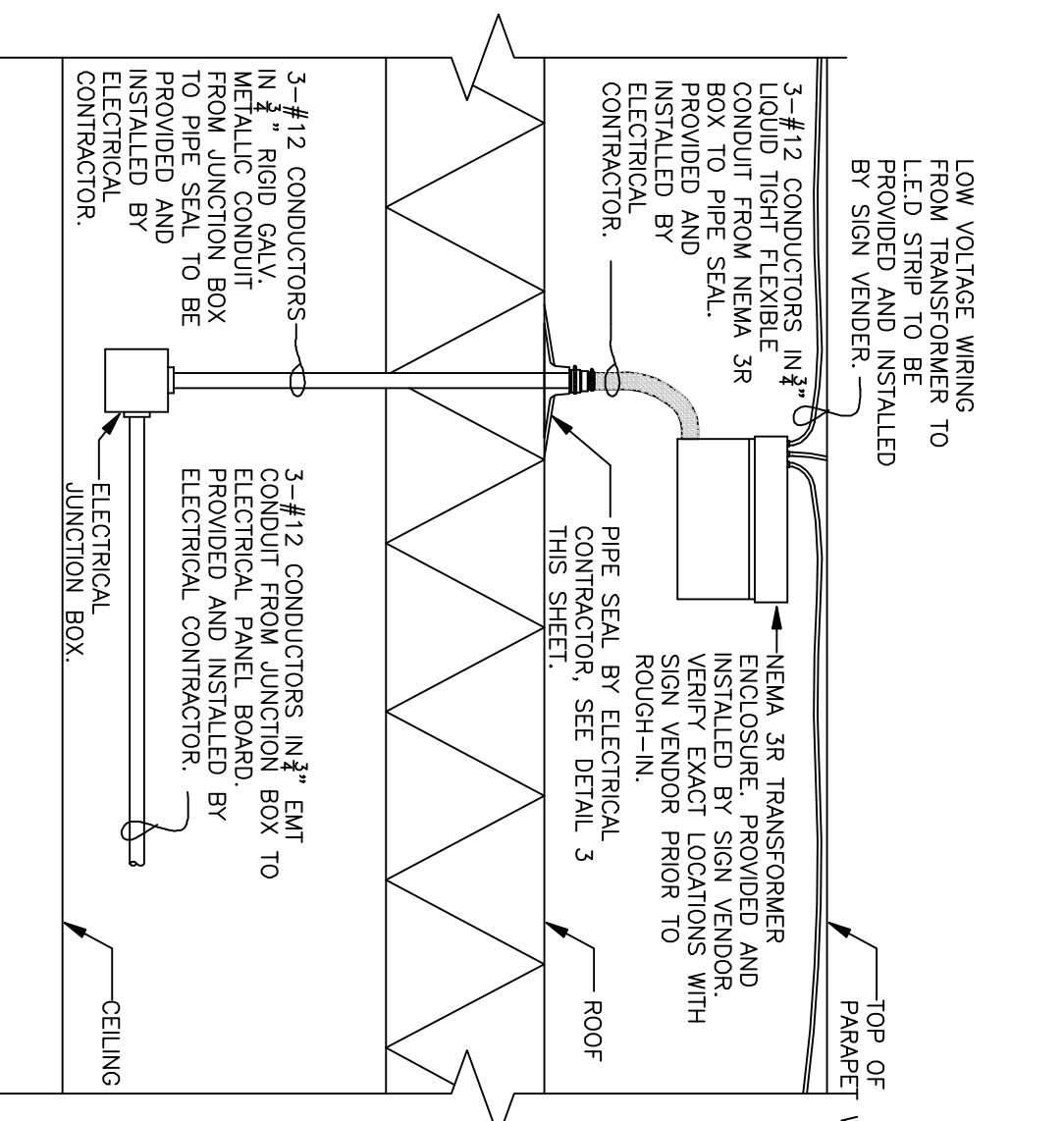
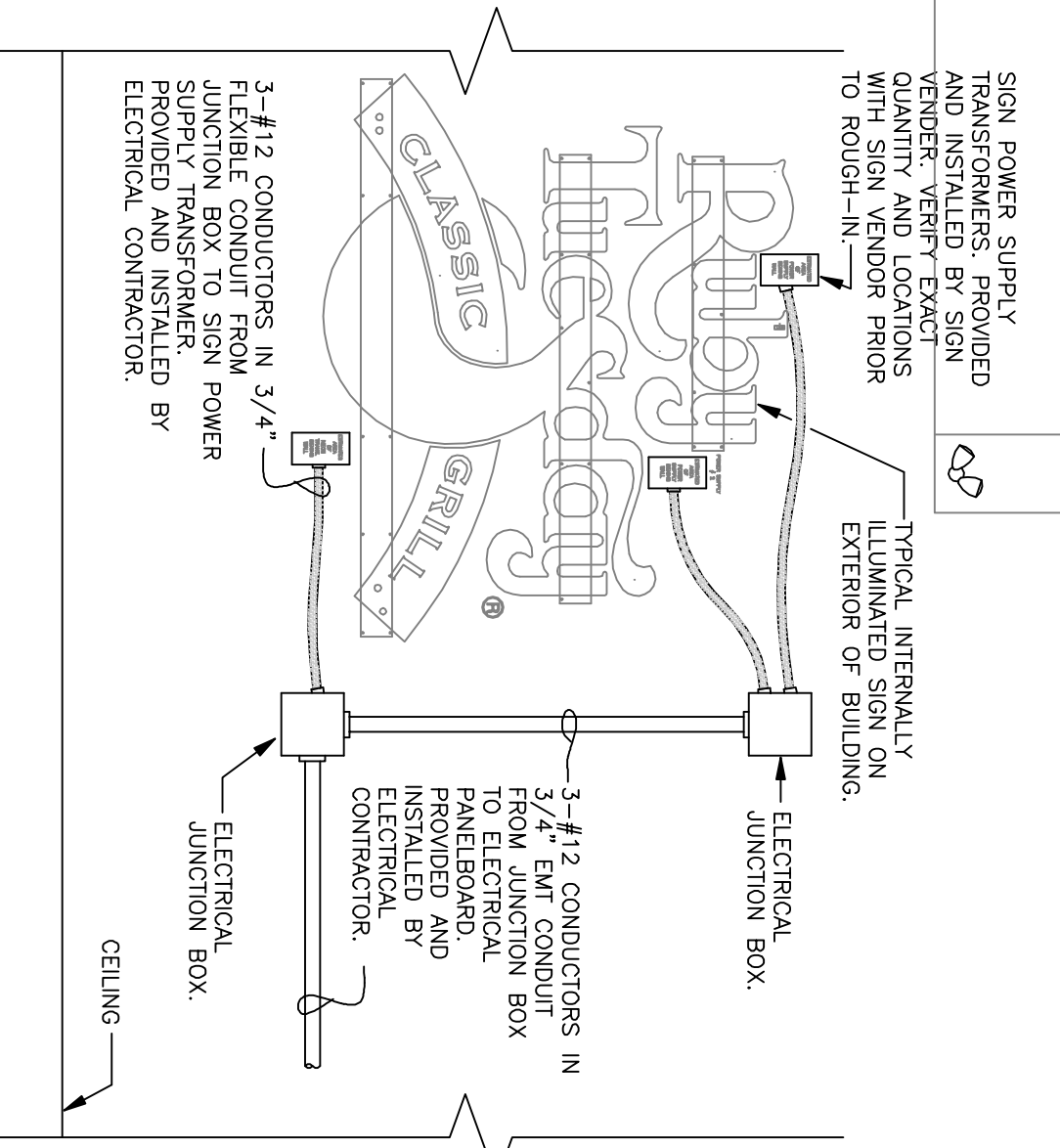


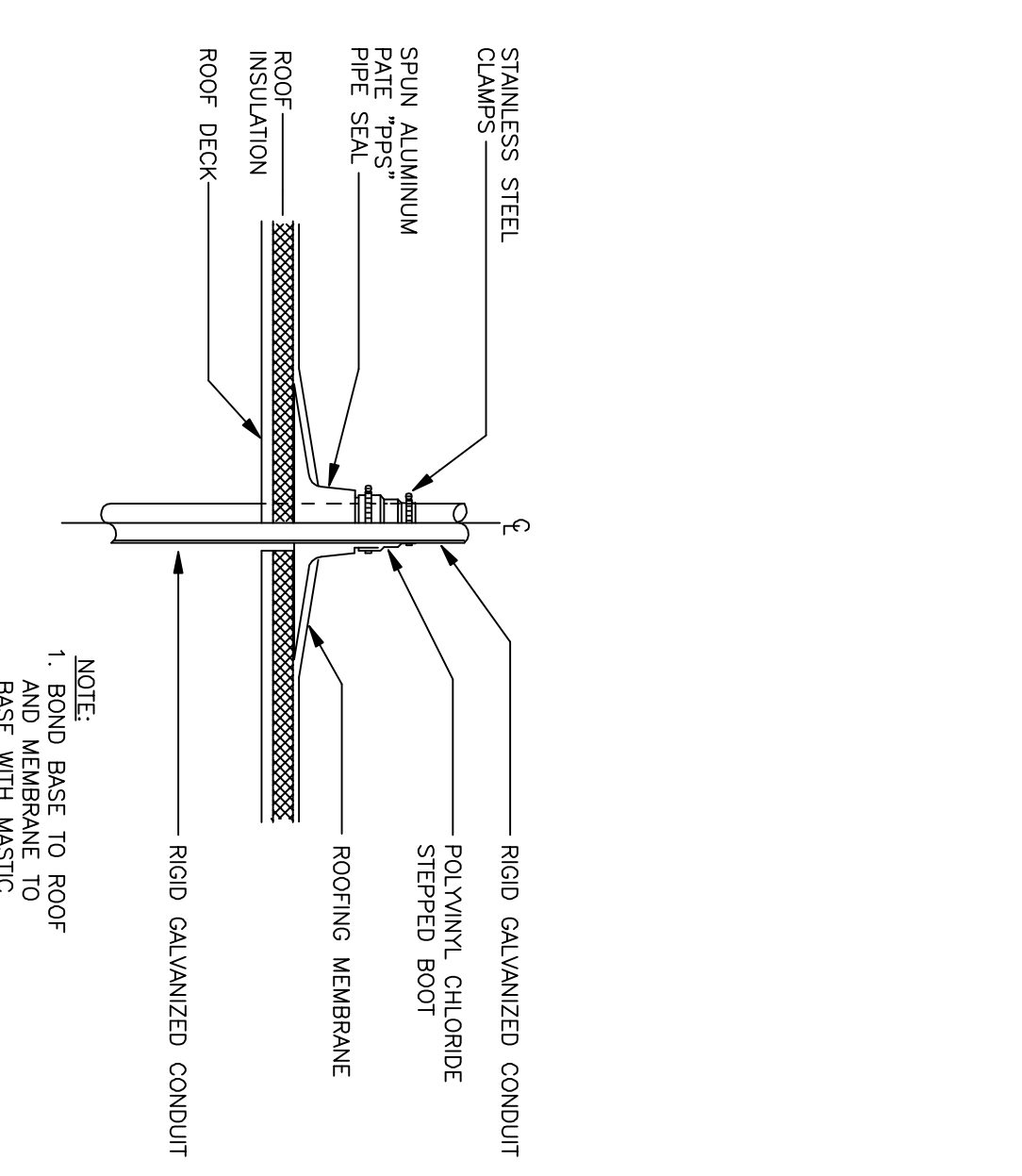
1 ROOF POWER PLAN
SCALE: 1/4" = 1'-0"



2 TYPICAL L.E.D. STRIPE WIRING DETAIL
NOT TO SCALE



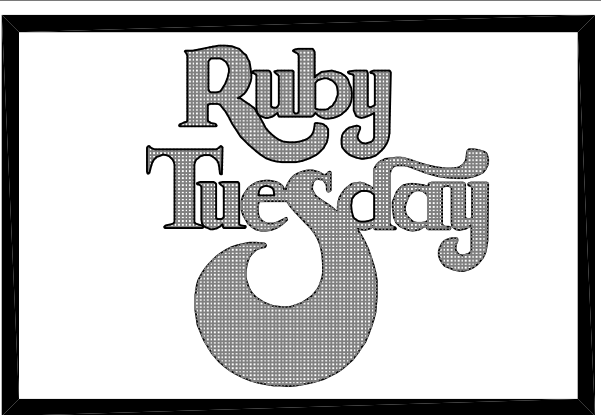
3 TYPICAL LIGHTED SIGN WIRING DETAIL
NOT TO SCALE



4 PIPE SEAL DETAIL
NOT TO SCALE

- 5 SIGNAGE & L.E.D. NOTES
NOT TO SCALE
- 1). ALL JUNCTION BOXES FOR LED SHALL BE INSTALLED AS INDICATED ON PLAN. ELECTRICAL SHALL BE RESPONSIBLE FOR HOWEVERS TO PANEL FROM JUNCTION BOX AND FOR CONDUIT & WIRE TO TRANSFORMER
 - 2). SIGN CONTRACTOR SHALL MAKE CONNECTIONS AT TRANSFORMER AND SHALL PROVIDE AND INSTALL TRANSFORMER, LED STRIPES, SIGN CHANNEL LETTER, AND ALL WIRING FROM TRANSFORMER TO LED STRIPING AND SIGNS.
 - 3). ELECTRICAL CONTRACTOR IS RESPONSIBLE FOR THE FINAL HOOKUP FOR ALL OWNER SUPPLIED SIGNAGE AND LED STRIPES.
 - 4). ALL SIGNAGE TO BE MOUNTED ON 1" STANDOFF STRAPS.
 - 5). RUN ALL CONDUIT CONCEALED AND STUB THROUGH WALL FOR SIGNS AND LED TUBING. J-BOXES SHOWN ARE APPROXIMATE LOCATIONS. COORDINATE WITH ARCHITECTURAL ELEVATIONS AND SIGN VENDORS.
 - 6). THE GENERAL CONTRACTOR IS RESPONSIBLE TO COORDINATE WITH OWNERS SIGN VENDOR FINISHES ON THE INTERIOR OF THE BUILDING AND SIGN VENDOR SHALL NOT ALLOW ACCESS TO THE WALL CAVITY. THE INSTALLATION OF THIS SIGN REQUIRES CHASING ELECTRICAL LINES BETWEEN SOME LETTERS AND TO TRANSFORMERS HOUSED IN THE ATTIC VENDOR TO LOCATE ALL WIRING NECESSARY TO POWER THIS SIGN.

MARK	REVISION	DATE
✓	DR/BOON/ET/ER	9/29/05



ENGINEER

Kurzynske & Associates
825 Third Avenue, South
Nashville, Tennessee
(615) 255-5203

SEAL

MARK KURZYNSKE
License No. 92867
ELECTRICAL ENGINEER
LOUISIANA 029/05

EL. ROOF POWER PLAN

RUBY TUESDAY # 475
I-10E SERVICE ROAD at TYLER DRIVE (I-10 at Causeway)
SLIDELL

K&A PROJECT NUMBER
R10522
ISSUE FOR CONSTRUCTION
JULY 22 2005

CHECKED BY
AS NOTED
SCALE
SHEET NUMBER
E-5