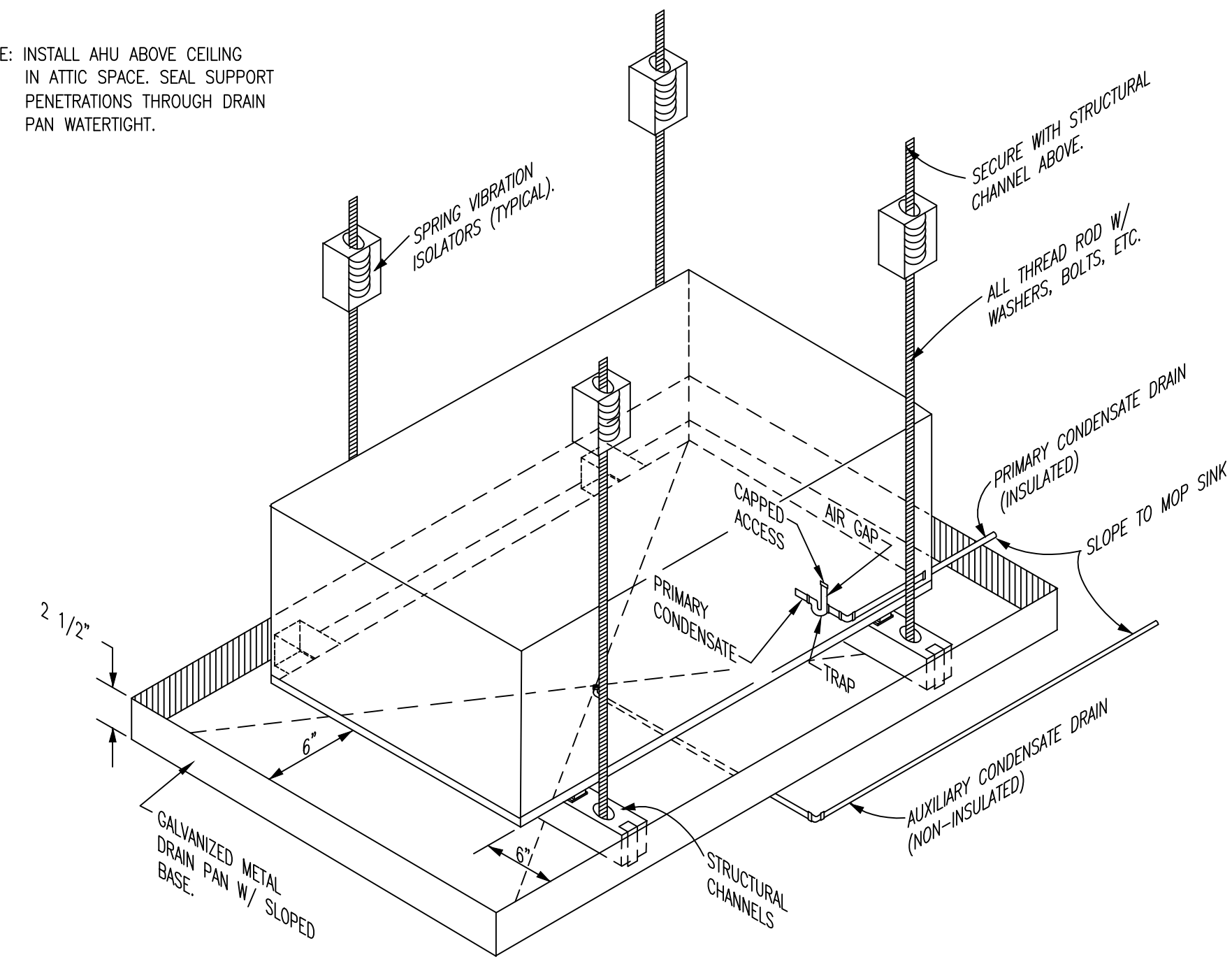


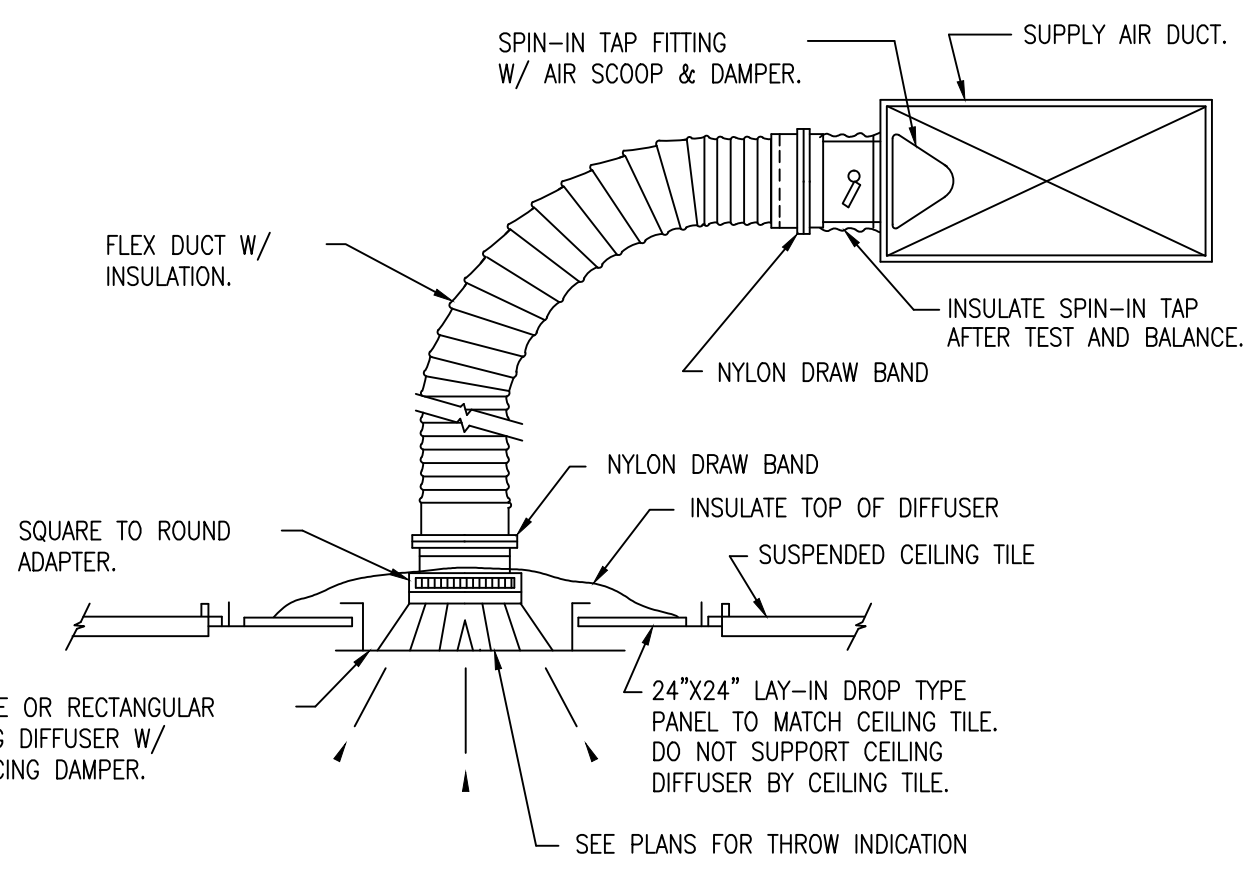
NOTE: INSTALL AHU ABOVE CEILING IN ATTIC SPACE. SEAL SUPPORT PENETRATIONS THROUGH DRAIN PAN WATER TIGHT.



TYPICAL HORIZONTAL AHU DETAIL

NOT TO SCALE

SPLIT SYSTEM HEAT PUMP UNIT SCHEDULE													
INDOOR UNIT							OUTDOOR UNIT						EFFICIENCY
TAG	CFM	NOM TONS	ELEC. HT. KW	ESP	VOLT/HZ/PHASE	TRANE MODEL	TAG	NOM TONS	VOLT/HZ/PHASE	MCA	MOCP	TRANE MODEL	MIN. EER
AHU-1	2000	10.0	12.0	0.5"	208/60/3	TWE120	HPU-1	10.0	208/60/3	38.0	50	TWE120	COND.-1
AHU-2	2000	10.0	12.0	0.5"	208/60/3	TWE120	HPU-1	10.0	208/60/3	38.0	50	TWE120	COND.-2
AHU-3	1960	7.0	12.0	0.5"	208/60/3	TWE084	HPU-1	7.0	208/60/3	38.0	50	TWE084	COND.-3
AHU-4	1840	5.0	12.0	0.5"	208/60/3	TWE060	HPU-1	5.0	208/60/3	38.0	50	TWE060	COND.-4
AHU-5	1840	5.0	12.0	0.5"	208/60/3	TWE060	HPU-1	5.0	208/60/3	38.0	50	TWE060	COND.-5
AHU-6	1840	5.0	12.0	0.5"	208/60/3	TWE060	HPU-1	5.0	208/60/3	38.0	50	TWE060	COND.-6
AHU-7	1840	5.0	12.0	0.5"	208/60/3	TWE060	HPU-1	5.0	208/60/3	38.0	50	TWE060	COND.-7
AHU-8	1960	7.0	12.0	0.5"	208/60/3	TWE084	HPU-1	7.0	208/60/3	38.0	50	TWE084	COND.-8
AHU-9	2000	10.0	12.0	0.5"	208/60/3	TWE120	HPU-1	10.0	208/60/3	38.0	50	TWE120	COND.-9
AHU-10	2000	10.0	12.0	0.5"	208/60/3	TW120	HPU-1	10.0	208/60/3	38.0	50	TWE120	COND.-10

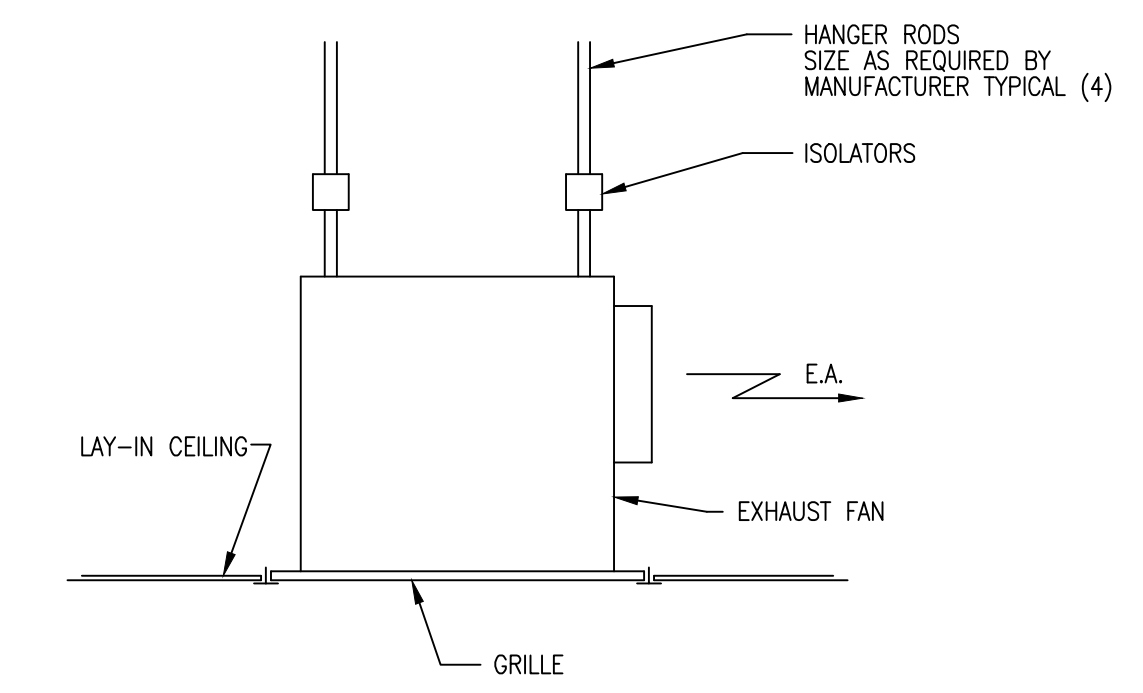


TYPICAL LAY-IN CEILING DIFFUSER DETAIL

NOT TO SCALE

EXHAUST FAN SCHEDULE										
TAG	CFM	ESP	TYPE	HP	DRIVE	ELEC.	LOCATION	SERVES	GREENHECK MODEL	REMARKS
EF-1	75	-	CEILING	-	DIR	120/1	CEILING	TOILET	SPA-50	SWITCH W/ LIGHT

HVAC EQUIPMENT SCHEDULE	
AHU #1,#2,#9,#10	TRANE TWE120, 9.6 KW, 2000 CFM, 500 CFM O/A, 10 TON, 200/230-3-60
COND #1,#2,#9,#10	TRANE TTK120, 60,000 BTU, 11.5 EER, 10 TON, 200/230-3-60
AHU #3,#8	TRANE TWE084, 9.6 KW, 1960 CFM, 500 CFM O/A, 7 TON, 200/230-3-60
COND #3,#8	TRANE TTK084, 60,000 BTU, 11.5 EER, 7 TON, 200/230-3-60
AHU #4,#5,#6,#7	TRANE TWE060, 9.6 KW, 1840 CFM, 500 CFM O/A, 5 TON, 200/230-3-60
COND #4,#5,#6,#7	TRANE TTK060, 60,000 BTU, 11.5 EER, 5 TON, 200/230-3-60



TYPICAL EXHAUST FAN IN LAY-IN CEILING DETAIL

NOT TO SCALE

KVS
architecture
347 Girod Street, Mandeville, Louisiana
985.674.3077 www.kvsarchitecture.com
REVISIONS:

**BUILDING SHELL FOR
GAUSE RETAIL
CENTER**
Gause Boulevard Slidell, Louisiana

DATE:
07.05.11
PROJECT No:
11008
DRAWING:

M2.0