

Dimensional Data

Figure 29. Cooling and gas/electric -10 tons high efficiency

Notes:

1. All dimensions are in inches/millimeters.
2. $\frac{1}{2}$ or $\frac{3}{4}$ NPT Gas Connection = (Y_C Models only); 2" Electrical Connection: Single Point Power When Heat Installed (T_C Models only.)

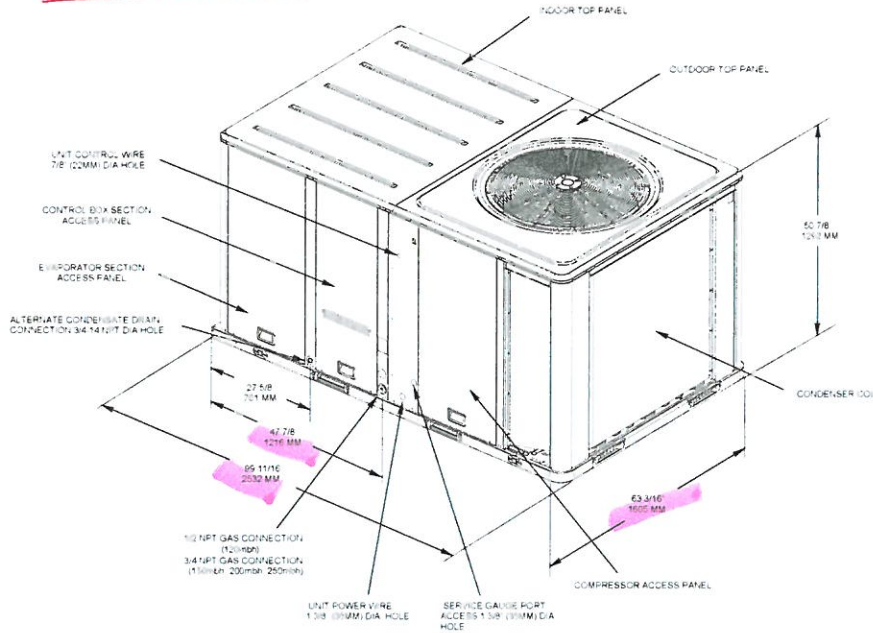
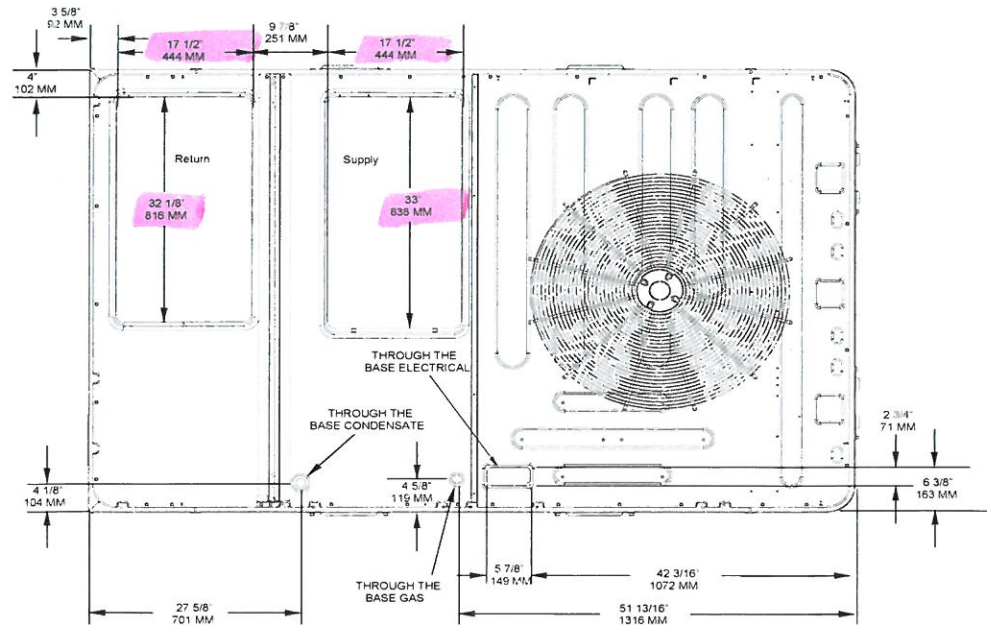


Figure 30. Cooling and gas/electric - 10 tons high efficiency; downflow airflow supply/return, through-the-base utilities

Notes:

1. All dimensions are in inches/millimeters.
2. $\frac{1}{2}$ or $\frac{3}{4}$ NPT Gas Connection = (Y_C Models only); 2" Electrical Connection: Single Point Power When Heat Installed (T_C Models only.)



SUPPLY = 32" x 16"
RETURN = 32" x 16"

Dimensional Data

Figure 33. Cooling and gas/electric - 10 tons high efficiency - roof curb

Notes:

1. All dimensions are in inches/millimeters.
2. 1/2 or 3/4 NPT Gas Connection = (Y_C Models only); 2" Electrical Connection: Single Point Power When Heat Installed (T_C Models only.)

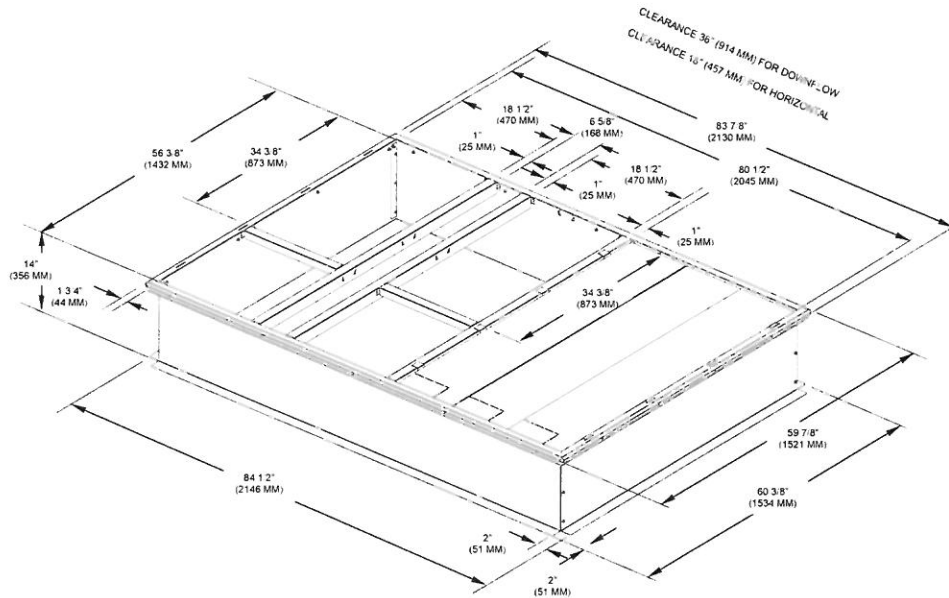


Figure 34. Cooling and gas/electric - 10 tons high efficiency; duct connections field fabricated

Notes:

1. All dimensions are in inches/millimeters.
2. 1/2 or 3/4 NPT Gas Connection = (Y_C Models only); 2" Electrical Connection: Single Point Power When Heat Installed (T_C Models only.)
3. See "Clearance required from duct to combustible surfaces (inches)," p. 19 for duct clearance to combustible materials.

