

DAMMON
ENGINEERING, INC.

CHIEF ENGINEER
EMMETT
DAMMON, P.E.

CHIEF ARCHITECT
ROBERT
WILTSE

1095 FLORIDA AVENUE
SLIDELL, LA. 70458
OFFICE: 985-649-5832
FAX: 985-641-5950

WEBSITE:
WWW.DAMMONENGINEERING.COM
EMAIL:
DAMMONENG@BELLSOUTH.NET

ARCHITECTURE
ENGINEERING
STUDIES
PLANNING
INVESTIGATION
EXPERT WITNESS

NEW OFFICE
COMPLEX

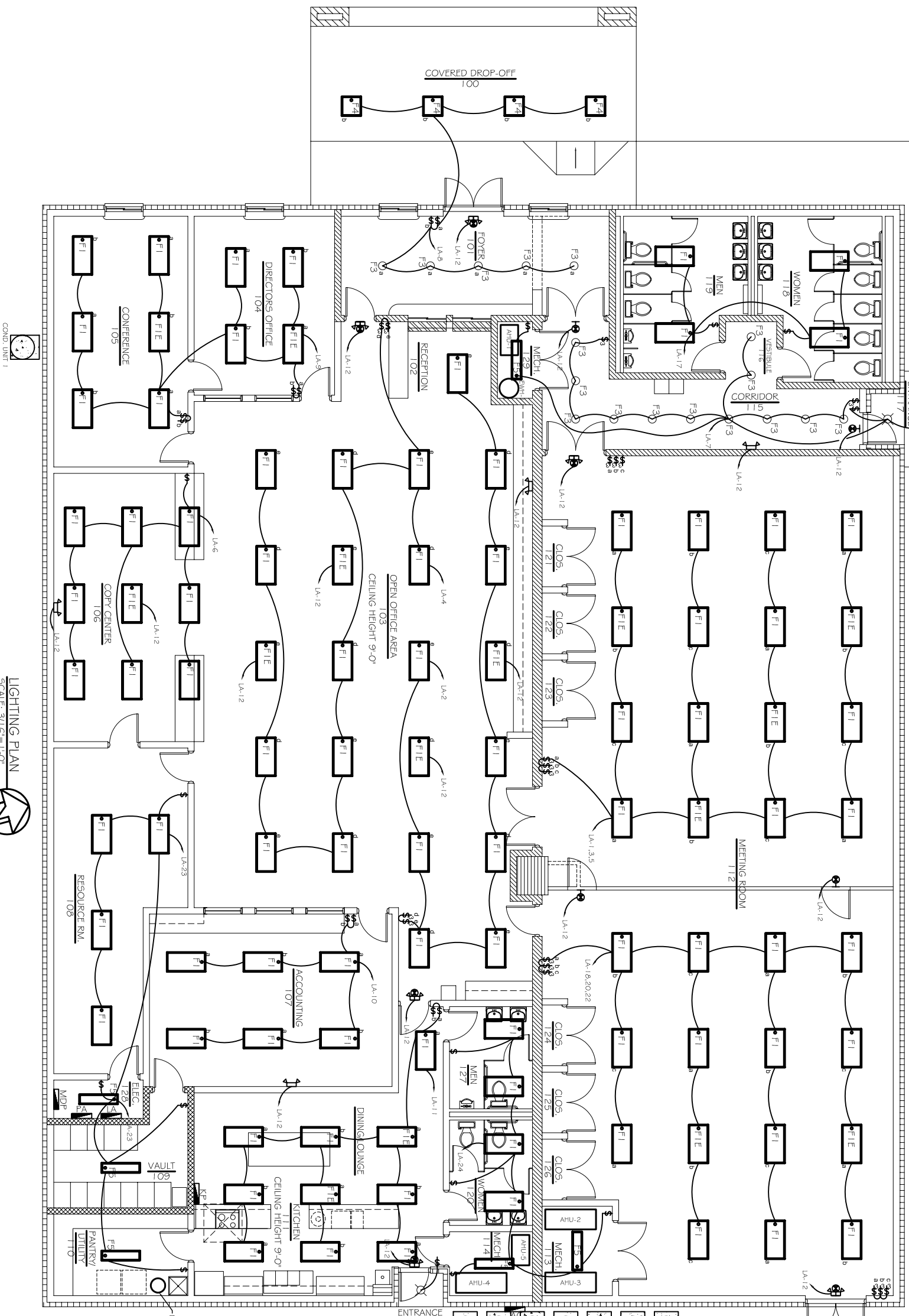
CHILD DEVELOPMENT
COUNCIL OF
ACADIANA, INC.
OPELOUSAS, LA

LIGHTING
PLAN

REV:
SCALE: AS NOTED
JOB#: 2030
DATE: 7-2-09
SHEET

OF
E-2

LEGEND	
	- 2x4 RECESSED FLUORESCENT LAMP, STEEL HOUSING
	- 1x4 RECESSED FLUORESCENT LAMP, STEEL HOUSING, 2 BULB FIXT.
	- 2x2 RECESSED FLUORESCENT LAMP, STEEL HOUSING
	- EMERGENCY LIGHT WITH 90 MIN. BATTERY BACKUP
	- INCANDESCENT / H.I.D. FIXTURE
	- POWER PANEL
	- SWITCH
	- EXIT LIGHT, 90 MINUTE BATTERY BACK-UP



LIGHTING PLAN
SCALE: 3/16"=1'-0"

