

**DAMMON**  
ENGINEERING, INC.

CHIEF ENGINEER  
EMMETT  
DAMMON, P.E.

CHIEF ARCHITECT  
ROBERT  
WILTSE

1095 FLORIDA AVENUE  
SLIDELL, LA. 70458  
OFFICE: 985-649-5832  
FAX: 985-641-5950

WEBSITE:  
WWW.DAMMONENGINEERING.COM  
EMAIL:  
DAMMONENG@BELLCSOUTH.NET

ARCHITECTURE  
ENGINEERING  
STUDIES  
PLANNING  
INVESTIGATION  
EXPERT WITNESS

NEW OFFICE  
COMPLEX

CHILD DEVELOPMENT  
COUNCIL OF  
ACADIANA, INC.  
OPELOUSAS, LA

LIGHTING  
PLAN

REV:

SCALE: AS NOTED

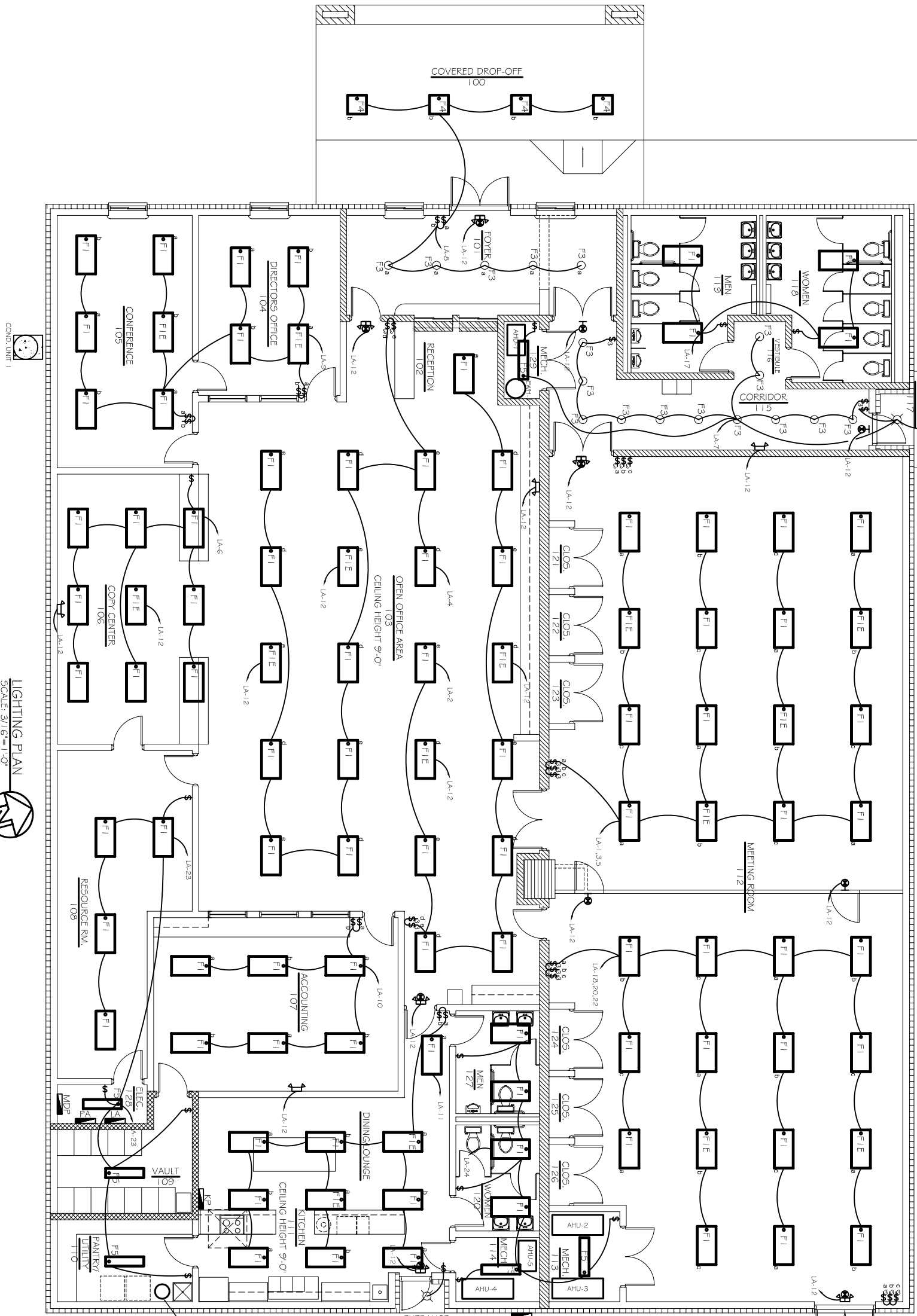
JOB#: 2030

DATE: 7-2-09

SHEET

E-2

LEGEND	
	- 2x4 RECESSED FLUORESCENT LAMP, STEEL HOUSING
	- 1x4 RECESSED FLUORESCENT LAMP, STEEL HOUSING, 2 BULB FIXT.
	- 2x2 RECESSED FLUORESCENT LAMP, STEEL HOUSING
	- EMERGENCY LIGHT WITH 90 MIN. BATTERY BACKUP
	- INCANDESCENT / H.I.D. FIXTURE
	- POWER PANEL
	- 3-WAY SWITCH
	- EXIT LIGHT, 90 MINUTE BATTERY BACK-UP



LIGHTING PLAN  
SCALE: 3/16"=1'-0"



OF