

DAMMON
ENGINEERING, INC.

CHIEF ENGINEER
EMMETT
DAMMON, P.E.

CHIEF ARCHITECT
ROBERT
WILTSE

1095 FLORIDA AVENUE
SLIDELL, LA, 70458
OFFICE: 985-649-5832
FAX: 985-641-5950

WEBSITE:
WWW.DAMMONENGINEERING.COM
EMAIL:
DAMMONENG@BELLCSOUTH.NET

ARCHITECTURE
ENGINEERING
STUDIES
PLANNING
INVESTIGATION
EXPERT WITNESS

NEW OFFICE
COMPLEX

CHILD DEVELOPMENT
COUNCIL OF
ACADIANA, INC.
OPELOUSAS, LA

POWER
PLAN

REV:

SCALE: AS NOTED

JOB#: 2030

DATE: 7-2-09

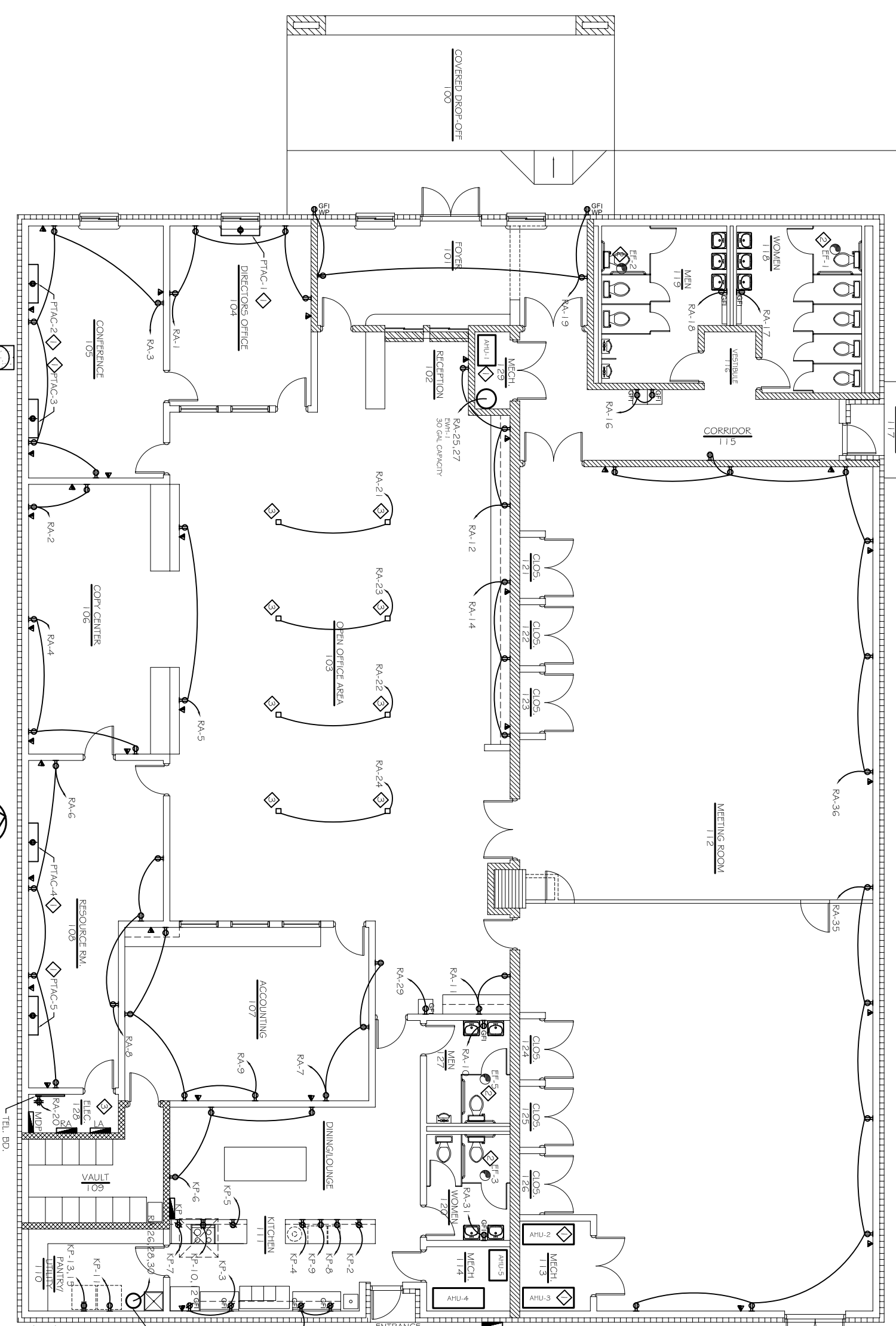
SHEET

E-3

OF

LEGEND

- - POWER PANEL
- ⊕ - 120V, 20A, DUPLEX RECEPTACLE, 20A, 1Ø, 120V, 3 POLES, GROUND
- ⊕ - 120V, GROUND FAULT INTERRUPTER RECEPTACLE
- ⊕ - 120V, WEATHER PROOF RECEPTACLE, GROUND
- ⊕ - 208V, RECEPTACLE, 1Ø, 50A, GROUND
- ⊕ - COMBINATION TEL/DATA OUTLET 1-GANG J.B. W/ 1" C (E) STUBBED UP ABOVE ACCESSIBLE CEILING W/ FULL STRING
- ⊕ - 208V, RECEPTACLE, 1Ø, 20A, GROUND
- ⊕ - 120V, RECEPTACLE - FOURPLEX, 1Ø, 20A, GROUND
- ⊕ - DISCONNECT
- ⊕ - EXHAUST FAN
- ⊕ - xx GAL WATER HEATER



SPECIFIC NOTES

- ◆ INSTALL ELECTRICAL WIRING FOR PTAC PER MFR. REQUIREMENTS.
- ◆ CONNECT BATHROOM EXHAUST FAN TO AND INTERLOCK WITH LIGHTING CIRCUIT.
- ◆ COORDINATE LOCATION OF TEL / PWR POLE WITH OWNER PRIOR TO ROUGH-IN.

POWER PLAN
SCALE: 3/16\"/>

