

DAMMON
ENGINEERING, INC.

CHIEF ENGINEER
EMMETT
DAMMON, P.E.

CHIEF ARCHITECT
ROBERT
WILTSE

1095 FLORIDA AVENUE
SLIDELL, LA. 70458
OFFICE: 985-649-5832
FAX: 985-641-5950

WEBSITE:
WWW.DAMMONENGINEERING.COM
EMAIL:
DAMMONENG@BELLOUTH.NET

ARCHITECTURE
ENGINEERING
STUDIES
PLANNING
INVESTIGATION
EXPERT WITNESS

NEW OFFICE
COMPLEX

CHILD DEVELOPMENT
COUNCIL OF
ACADIANA, INC.
OPELOUSAS, LA

PLUMBING
PLAN

REV:

SCALE: AS NOTED

JOB#: 2030

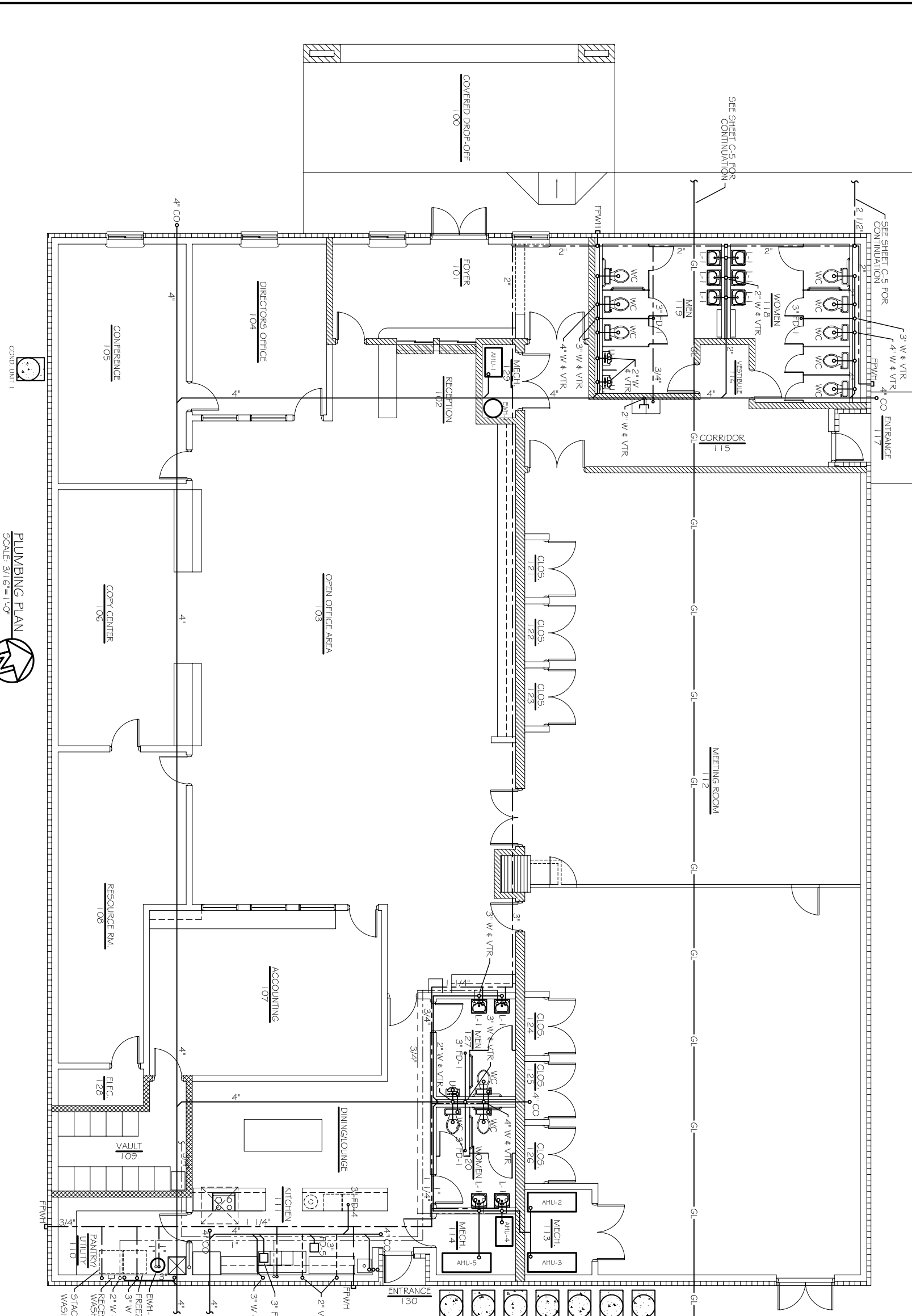
DATE: 7-13-09

SHEET

P-2

OF

LEGEND	
	- SOIL & WASTE PIPING
	- VENT PIPING
	- GREASE LINE PIPING
	- COLD WATER PIPING
	- HOT WATER PIPING
	- HOT WATER RETURN PIPING
	- BALL VALVE
	- VALVE IN C.I. BOX/FtCS
	- CHECK VALVE
	- CLEANOUT
	- FREEZE PROOF WALL HYDRANT
	- VENT THRU ROOF
	COND. UNIT 2A
	COND. UNIT 2B
	COND. UNIT 3A
	COND. UNIT 3B
	COND. UNIT 4A
	COND. UNIT 4B
	COND. UNIT 5
	FMH
	CO
	VTR



PLUMBING PLAN
SCALE: 3/16"=1'-0"

