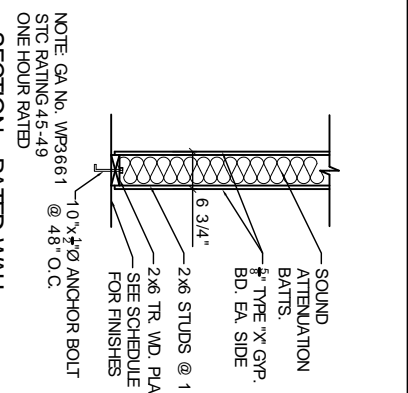
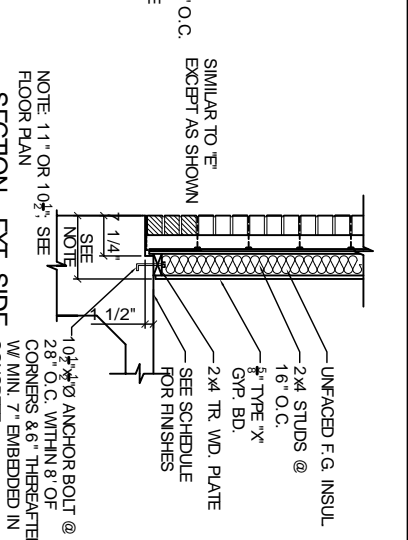


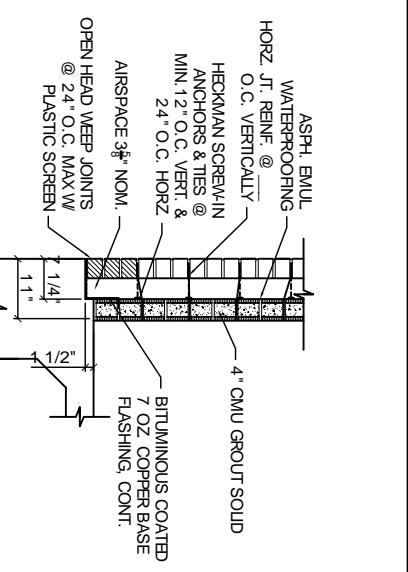
SECTION - TYP. EXT. WALL  
SCALE 3/8" = 1'-0"



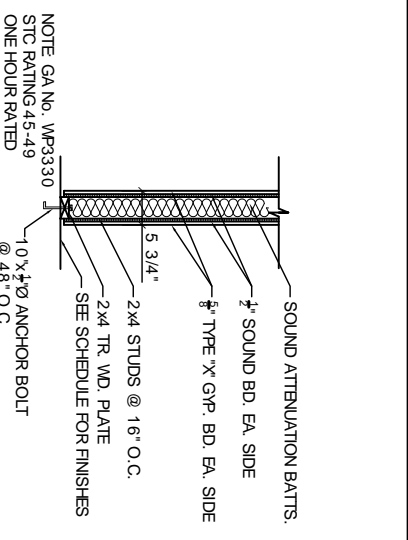
SECTION - RATED WALL BTW OCCUPANCIES  
SCALE 3/8" = 1'-0"



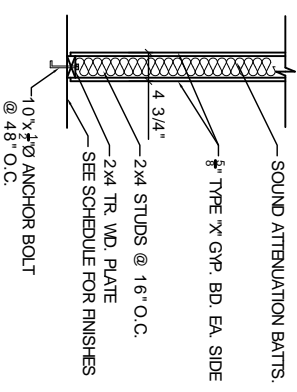
SECTION - EXT. SIDE WALL @ ENTR. 130  
SCALE 3/8" = 1'-0"



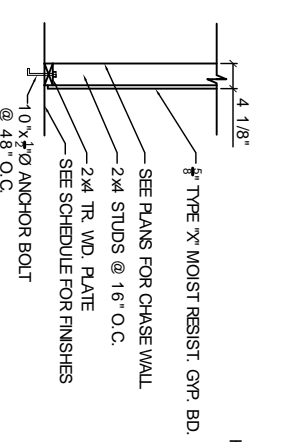
SECTION - VAULT EXT. WALL  
SCALE 3/8" = 1'-0"



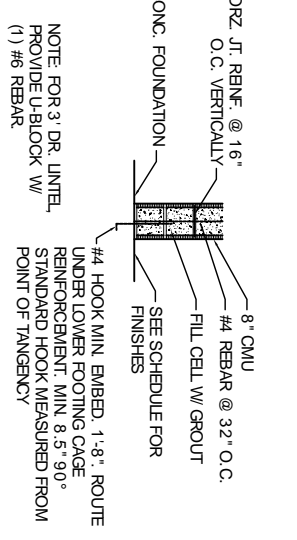
SECTION - TYP. INT. SOUND WALL  
SCALE 3/8" = 1'-0"



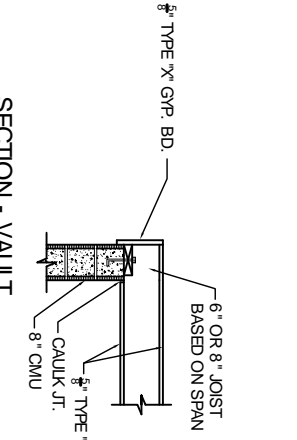
SECTION - TYP. INT. WALL  
SCALE 3/8" = 1'-0"



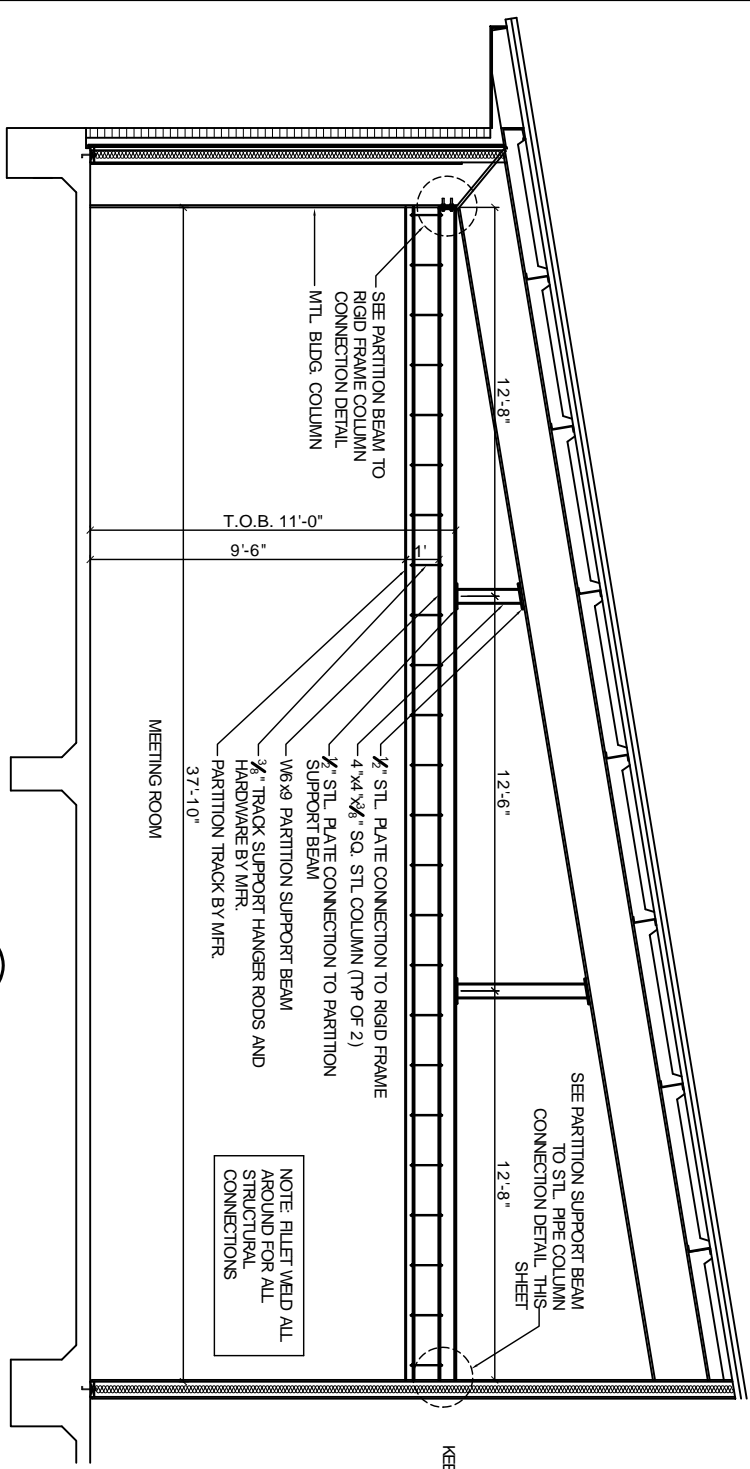
SECTION - CHASE WALL ONE SIDE  
SCALE 3/8" = 1'-0"



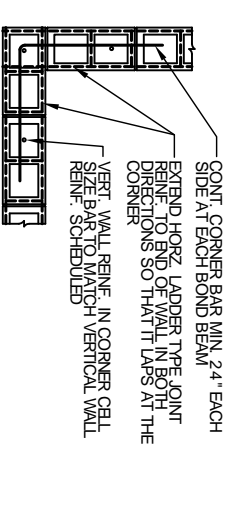
SECTION - TYP. INT. CMU WALL  
SCALE 3/8" = 1'-0"



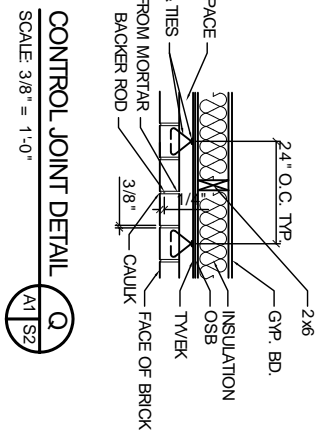
SECTION - VAULT CEILING SYSTEM  
SCALE 3/8" = 1'-0"



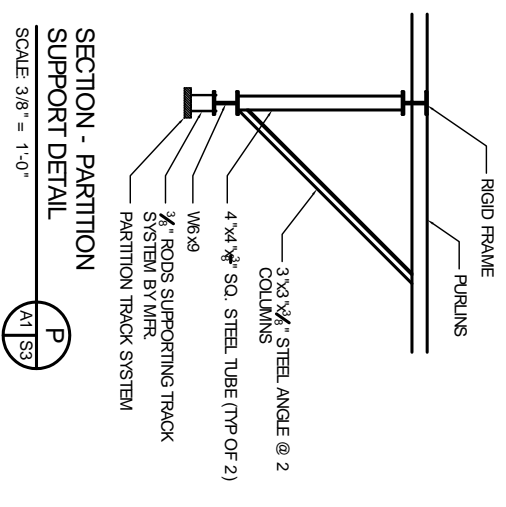
SECTION - PARTITION WALL SYSTEM  
SCALE 3/4" = 1'-0"



TYPICAL REIN. @ CORNER OF MASONRY  
SCALE N.T.S.



CONTROL JOINT DETAIL  
SCALE 3/8" = 1'-0"



SECTION - PARTITION SUPPORT DETAIL  
SCALE 3/8" = 1'-0"

GA FILE NO. WP 3661  
GENERIC

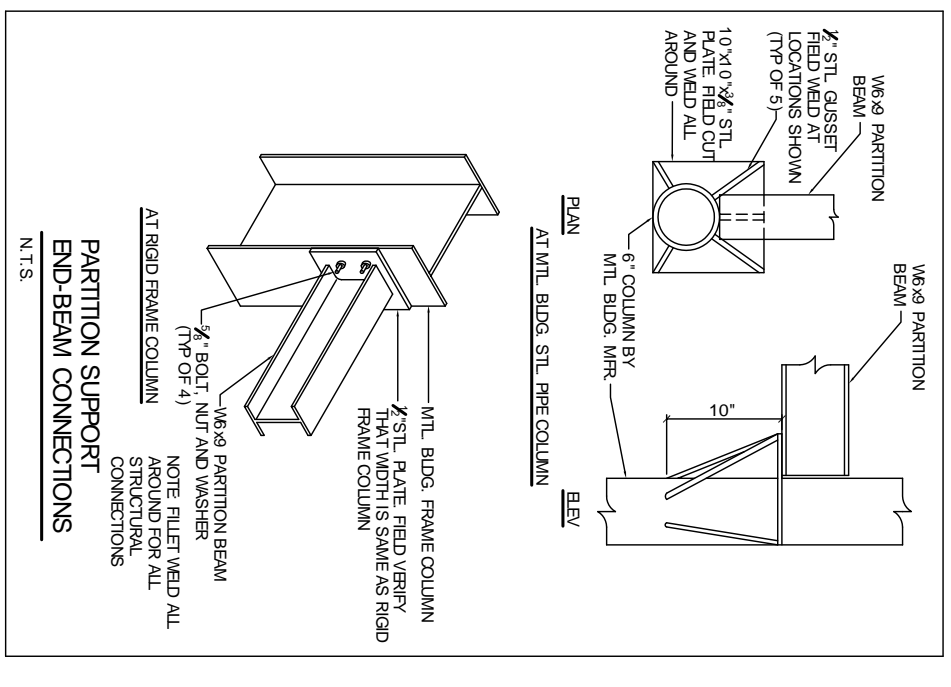
1 HOUR FIRE

GA FILE NO. WP 3330  
GENERIC

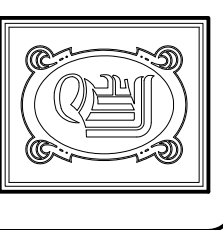
45 TO 49 STC  
1 HOUR FIRE

GRPSUM WALLBOARD, WOOD STUDS,  
MINERAL FIBER INSULATION  
ONE LAYER 5/8" TYPE X GRPSUM WALLBOARD APPLIED AT RIGHT ANGLES TO EACH SIDE OF 2x6 WOOD STUDS 16" O.C. WITH 2 1/2" TIES S OR WDRWALL SCREWS 12" O.C. 5 1/2" MINERAL FIBER INSULATION, NOMINAL 2.5 PCF, FRICTION FIT IN STUD SPACE  
VERTICAL JOINTS STAGGERED 16" O.C., HORIZONTAL JOINTS STAGGERED 24" O.C., ON OPPOSITE SIDES.  
THICKNESS: 6 1/2"  
APPROX. WEIGHT: 8 1/2" PSF  
FIRE TEST: ITS J99-22441.1, 10-99  
TESTED AT 5 156 LBS PER STUD OR 100 PERCENT OF DESIGN LOAD.  
(LOAD-BEARING)

GRPSUM WALLBOARD, WOOD FIBERBOARD,  
WOOD STUDS  
BASE LAYER 1/2" WOOD FIBERBOARD, 0.82 psf, APPLIED PARALLEL TO EACH SIDE OF 2x4 STUDS 16" O.C. WITH 5d COATED NAILS, 1 1/2" LONG, 0.0915" SHANK, 1/2" HEADS, 24" O.C. AT VERTICAL JOINTS AND INTERMEDIATE STUDS AND 16" O.C. AT TOP AND BOTTOM PLATES. FACE LAYER 5/8" TYPE X GRPSUM WALLBOARD OR GRPSUM VENEER BASE APPLIED PARALLEL TO EACH SIDE WITH 6" WIDE STRIPS OF 1/2" THICK BEADS OF LAMINATING ADHESIVE ALONG THE PERIMETER AND CENTERLINE OF EACH BOARD AND 8d COATED NAILS, 2 1/2" LONG, 0.131" SHANK, 1/2" HEADS, 12" O.C. TO TOP AND BOTTOM PLATES, 24" O.C. AT VERTICAL JOINTS, AND AT THIRD POINTS AT INTERMEDIATE STUDS.  
THICKNESS: 5 1/2"  
APPROX. WEIGHT: 8 PSF  
FIRE TEST: OSUT-3054, 4-3-65  
SOUND TEST: OR 64-73, 9-23-64



PARTITION SUPPORT  
END-BEAM CONNECTIONS  
N.T.S.



**DAMMON**  
ENGINEERING, INC.  
CHIEF ENGINEER  
EMMETT  
DAMMON, P.E.  
CHIEF ARCHITECT  
ROBERT  
WILTSE

1095 FLORIDA AVENUE  
SUITE LL, 70456  
OFFICE: 985-649-5632  
FAX: 985-641-5950

WWW.DAMMONENGINEERING.COM  
EMAIL:  
DAMMONING@BELL.SOUTH.NET

ARCHITECTURE  
ENGINEERING  
STUDIES  
PLANNING  
INVESTIGATION  
EXPERT WITNESSES

NEW OFFICE  
COMPLEX

CHILD DEVELOPMENT  
COUNCIL OF  
ACADIANA, INC.  
OPELOUSAS, LA

MASONRY /  
PARTITION  
DETAILS

REV: 12-7-09 CONST.

SCALE: AS NOTED

JOB#: 2030

DATE: 10-19-09

SHEET 9

S-3

OF 26