

DAMMON
ENGINEERING, INC.

CHIEF ENGINEER
EMMETT
DAMMON, P.E.

CHIEF ARCHITECT
ROBERT
WILTSE

1095 FLORIDA AVENUE
SLIDELL, LA, 70458
OFFICE: 985-649-5832
FAX: 985-641-5950

WEBSITE:
WWW.DAMMONENGINEERING.COM
EMAIL:
DAMMONENG@BELLSouth.NET

ARCHITECTURE
ENGINEERING
STUDIES
PLANNING
INVESTIGATION
EXPERT WITNESSES

NEW OFFICE
COMPLEX

CHILD DEVELOPMENT
COUNCIL OF
ACADIANA, INC.
OPLOUSAS, LA

LIGHTING
PLAN

REV: 12-7-09 CONST.

SCALE: AS NOTED

JOB#: 2030

DATE: 10-19-09

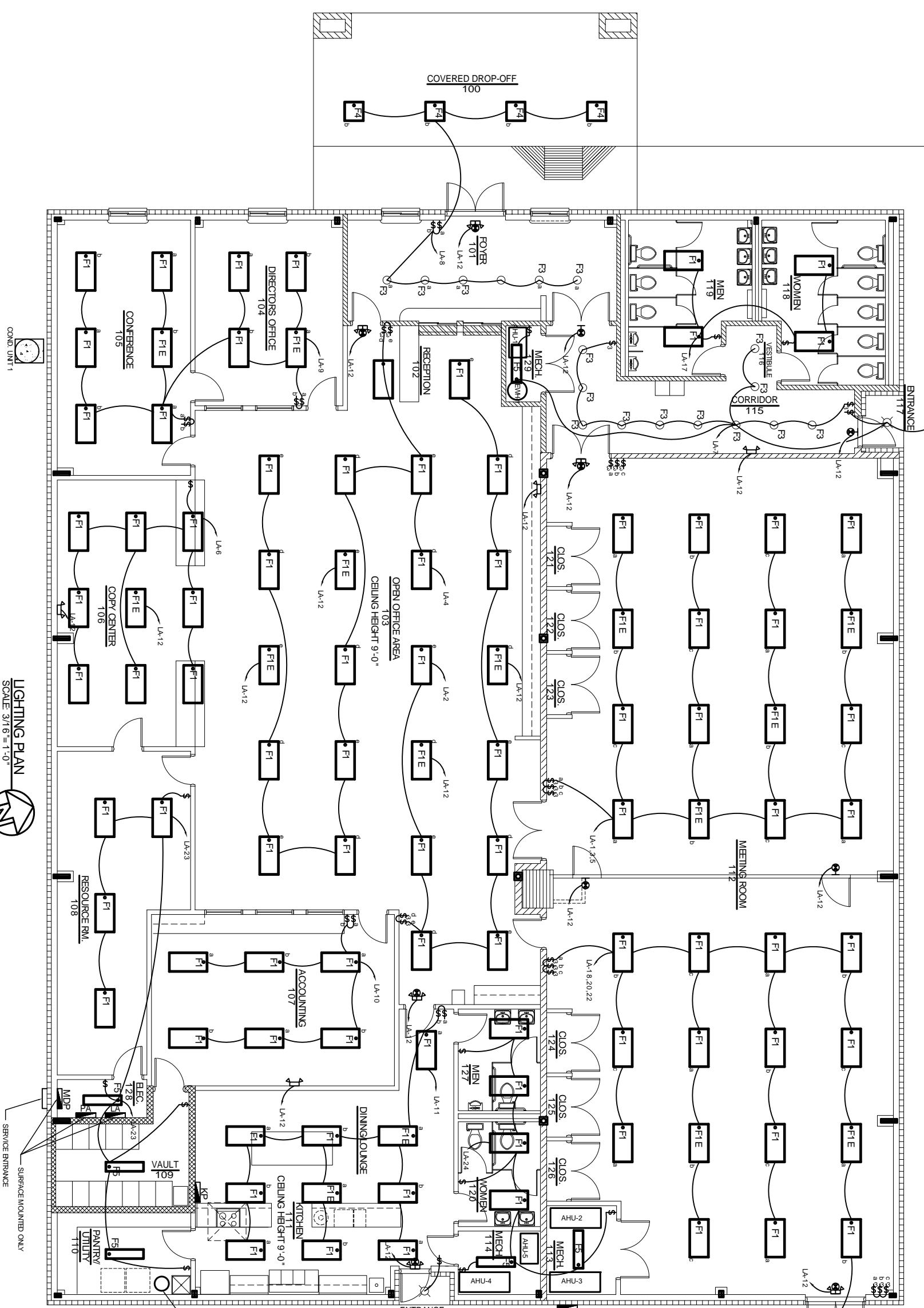
SHEET 22

E-2

OF 26

LEGEND

- 2'x1' RECESSED FLUORESCENT LAMP - STEEL HOUSING
- 1'x4' RECESSED FLUORESCENT LAMP - STEEL HOUSING, 2 BULB FIXT.
- 2'x2' RECESSED FLUORESCENT LAMP - STEEL HOUSING
- EMERGENCY LIGHT WITH 90 MIN. BATTERY BACKUP
- INCANDESCENT / H.I.D. FIXTURE
- INCANDESCENT EXTERIOR FIXTURE
- POWER PANEL
- SWITCH
- 3-WAY SWITCH
- EXIT LIGHT - 90 MINUTE BATTERY BACK-UP



LIGHTING PLAN
SCALE: 3/16" = 1'-0"

