

DAMMON
ENGINEERING, INC.

CHIEF ENGINEER
EMMETT
DAMMON, P.E.

CHIEF ARCHITECT
ROBERT
WILTSE

1095 FLORIDA AVENUE
SLIDELL, LA 70458
OFFICE: 985-649-5832
FAX: 985-641-5950

WEBSITE:
WWW.DAMMONENGINEERING.COM
EMAIL:
DAMMONENG@BELLSouth.NET

ARCHITECTURE
ENGINEERING
STUDIES
PLANNING
INVESTIGATION
EXPERT WITNESS

NEW OFFICE
COMPLEX

CHILD DEVELOPMENT
COUNCIL OF
ACADIANA, INC.
OPELOUSAS, LA

POWER
PLAN

REV: 12-7-09 CONST.

SCALE: AS NOTED

JOB#: 2030

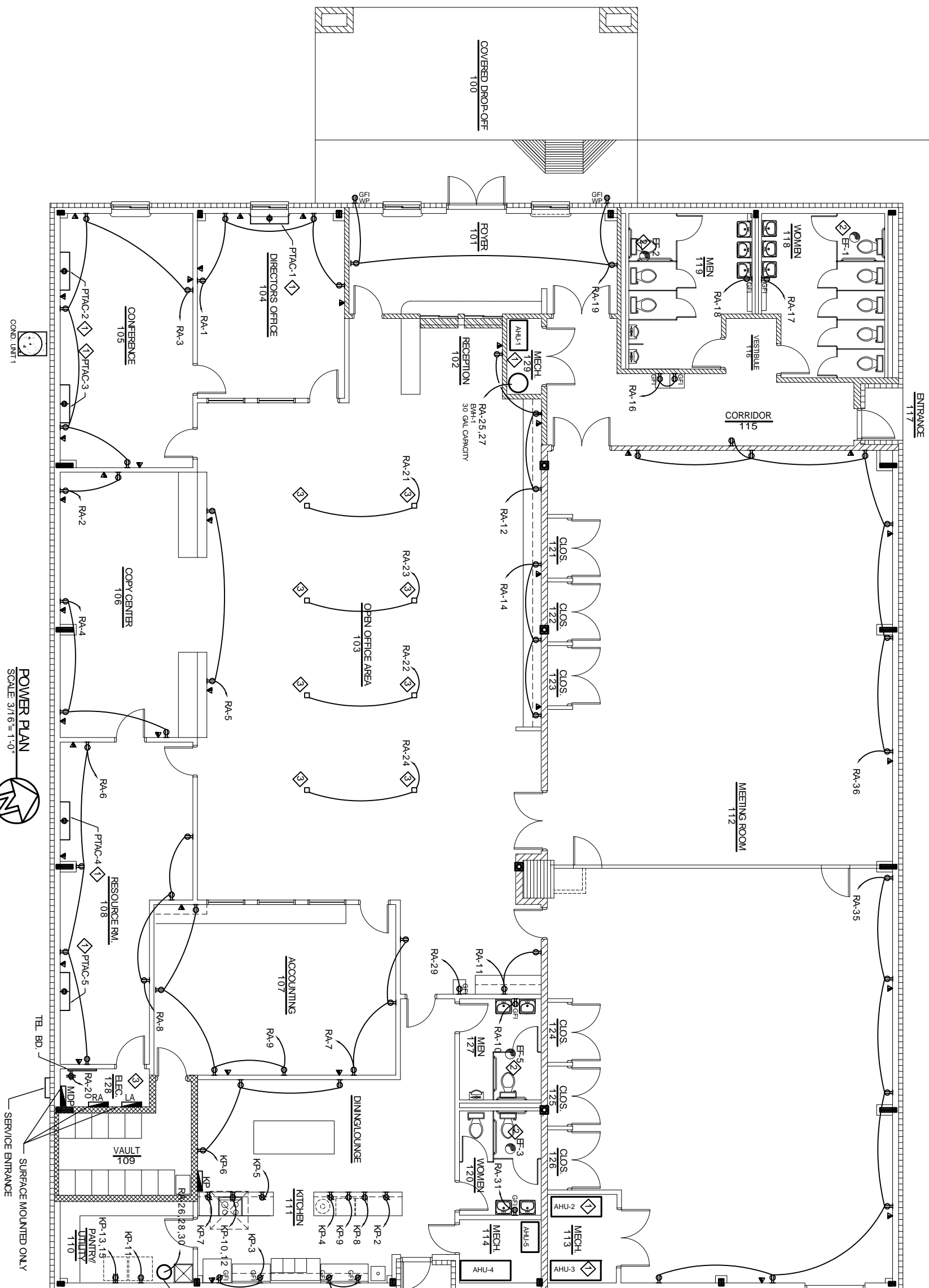
DATE: 10-19-09

SHEET 23

E-3

OF 26

- LEGEND**
- ▶ - POWER PANEL
 - ⊕ - 120V, 20A DUPLEX RECEPTACLE 20A, 1Ø, 120V, 3 POLES, GROUND
 - ⊕_{GR} - 120V, GROUND FAULT INTERRUPTER RECEPTACLE
 - ⊕_{WIP} - 120V, WEATHER PROOF RECEPTACLE GROUND
 - ⊕ - 208V, RECEPTACLE 1Ø, 50A, GROUND
 - ⊕ - COMBINATION TEL/DATA OUTLET 1-GANG J.B. W/ 1" C (E) STUBBED UP ABOVE ACCESSIBLE CEILING W/ PULL STRING
 - ⊕ - 208V, RECEPTACLE 1Ø, 20A, GROUND
 - ⊕ - 120V, RECEPTACLE - FOURPLEX 1Ø, 20A, GROUND
 - ⊕ - DISCONNECT
 - ⊕ - EXHAUST FAN
 - ⊕ - xx GAL WATER HEATER



SPECIFIC NOTES

- ▶ INSTALL ELECTRICAL WIRING FOR PTAC PER MFR REQUIREMENTS.
- ▶ CONNECT BATHROOM EXHAUST FAN TO AND INTERLOCK WITH LIGHTING CIRCUIT.
- ▶ COORDINATE LOCATION OF TEL / PWR POLE WITH OWNER PRIOR TO ROUGH-IN.

POWER PLAN
SCALE: 3/16"=1'-0"

