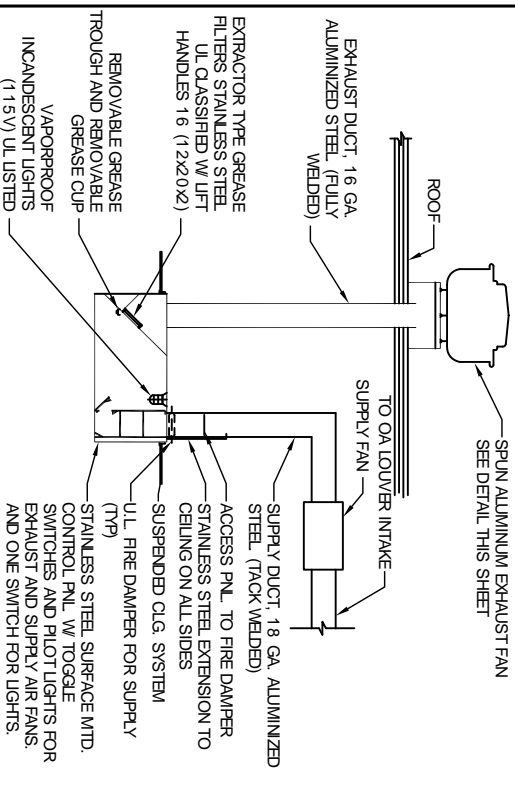


GENERAL NOTES:

1. ALL MECHANICAL WORK SHALL BE DONE IN STRICT ACCORDANCE WITH ALL STATE AND LOCAL CODES AND THE REQUIREMENTS OF THE STATE FIRE MARSHAL.
2. ALL BIDDERS MUST VISIT THE SITE PRIOR TO SUBMITTING A BID AND BECOME FAMILIAR WITH ALL EXISTING CONDITIONS AS THEY RELATE TO THE WORK REQUIRED BY THESE DOCUMENTS. BIDDERS SHALL INCLUDE ALL COSTS ASSOCIATED WITH WORK REQUIRED BY EXISTING CONDITIONS. NO ADDITIONAL COMPENSATION SHALL BE AWARDED FOR FAILURE TO BE SO INFORMED.
3. BIDDERS SHALL INCLUDE IN THEIR BID ALL COSTS ASSOCIATED WITH PERMIT FEES, INSPECTIONS, UTILITY CONNECTIONS, METERS, JACKING AND BORING OR CUTTING AND PATCHING OF STREETS AS REQUIRED FOR BUILDING SERVICES, ETC. IT SHALL BE THE RESPONSIBILITY OF ALL BIDDERS TO CONTACT THE APPROPRIATE UTILITY COMPANIES OR CITY DEPARTMENTS AND TO FURNISH THEM WITH ALL PERTINENT INFORMATION ON REQUIRED SERVICES IN ORDER THAT PILING FOR THESE CONNECTIONS CAN BE FURNISHED TO THE BIDER IN SUFFICIENT TIME FOR THESE COSTS TO BE INCLUDED IN THE BID. NO ADDITIONAL COMPENSATION SHALL BE AWARDED AFTER BID TIME FOR FAILURE TO OBTAIN AND INCLUDE ALL ASSOCIATED COSTS IN THE BID.
4. CONTRACTOR SHALL COORDINATE ALL MECHANICAL WORK WITH WORK OF THE GENERAL CONTRACTOR AND ALL SUBCONTRACTORS AND EXISTING CONDITIONS SO AS TO AVOID CONFLICTS.
5. WHERE CUTTING AND PATCHING AND/OR BLOCKOUT INSTALLATION REQUIRED FOR MECHANICAL WORK IS TO BE DONE BY OTHER TRADES, THIS CONTRACTOR SHALL BE RESPONSIBLE FOR COORDINATION AND LAYOUT OF THE REQUIRED WORK.
6. OWNER SHALL HAVE RIGHT OF REFUSAL OF ALL DEMO MATERIALS. MATERIALS NOT CLAIMED SHALL BE REMOVED FROM THE SITE AND DISPOSED OF PROPERLY.
7. MANUFACTURERS NAMES AND MODEL NUMBERS LISTED ARE MEANT TO ESTABLISH A STANDARD. MANUFACTURERS PRODUCING EQUIPMENT OF EQUAL CAPACITY AND QUALITY SHALL BE ACCEPTABLE SUBJECT TO THE SUBMITTAL PROCESS.
8. REFER TO WRITTEN SPECIFICATIONS FOR DETAILS NOT COVERED ON THE PLANS, WHERE CONFLICT OCCURS BETWEEN PLANS AND SPECIFICATIONS, THE SPECIFICATION SHALL TAKE PRECEDENCE

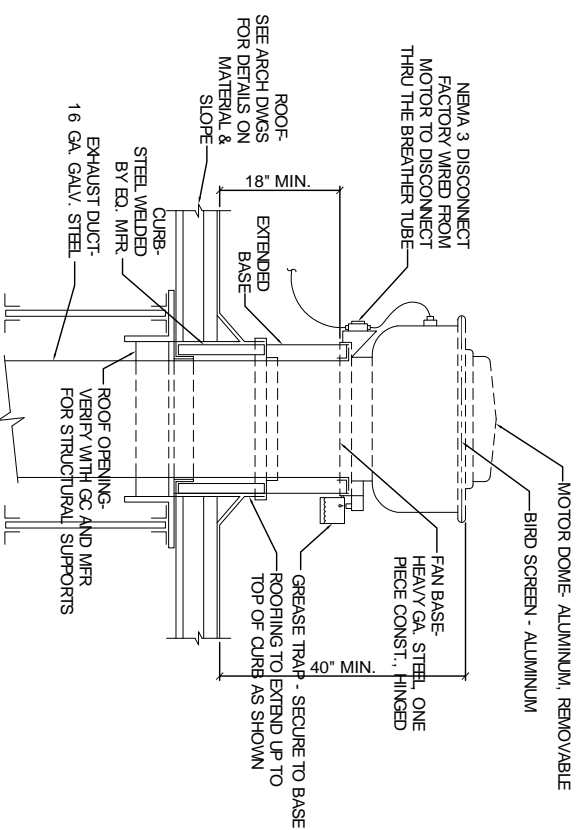
HVAC NOTES:

1. PRIOR TO FABRICATION OF ANY EQUIPMENT, DUCTWORK, ETC., CONTRACTOR SHALL REVIEW ENTIRE SET OF CONTRACT DOCUMENTS AND COORDINATE ALL CLEARANCES WITH RESPECT TO STRUCTURAL LIMITATIONS AS WELL AS REQUIRED WORK OF OTHER TRADES. ANY CONFLICTS SHALL BE RESOLVED PRIOR TO FABRICATION OF EQUIPMENT, DUCTWORK, ETC.
2. CONTRACT DOCUMENTS ARE NOT INTENDED TO BE DETAILED SHOP DRAWINGS. THEY DO NOT INDICATE IN THIS BID ALL COSTS FOR THESE OFFSETS THAT MAY BE REQUIRED TO ALLOW FOR STRUCTURAL MEMBERS, WORK OF OTHER TRADES, CROSSING OF DUCTS, ETC. NO ADDITIONAL COMPENSATION SHALL BE AWARDED FOR THIS WORK.
3. CONTRACTOR SHALL PROVIDE ALL REQUIRED PIPING CONNECTIONS TO EACH PIECE OF EQUIPMENT AS REQUIRED FOR THE PROPER OPERATION OF THE EQUIPMENT WHETHER SPECIFICALLY SHOWN OR NOT. THIS SHALL INCLUDE DRAIN PIPING, RELIEF LINES, WATER MAKE UP PIPING, ETC.
4. FLEXIBLE DUCT CONNECTIONS SHALL BE PROVIDED ON EACH FAN POWERED PIECE OF EQUIPMENT.
5. ALL DUCTWORK SHALL BE CONSTRUCTED AND INSTALLED IN STRICT ACCORDANCE WITH SMACNA GUIDELINES.
6. ALL NEW SUPPLY AIR DUCTS, RETURN AIR DUCTS, OUTSIDE AIR DUCTS AND REPAIRS SHALL BE GALVANIZED STEEL, EXTERNALLY INSULATED WITH 2" THICK 1" POLY-DENSITY INSULATION WITH FOIL FACING. NEW FLEXIBLE DUCTWORK SHALL BE UL-181 LISTED, CLASS 1, PRE-INSULATED AND PROPERLY SUPPORTED. PROVIDE SPIN FITTING WITH AIR SCOOP AND DAMPER AT EACH ROUND DUCT CONNECTION TO TRUNK DUCT. HARD ROUND DUCT SHALL BE GALVANIZED SPIRAL WITH EXTERNAL INSULATION. EXHAUST DUCTWORK SHALL BE UNLINED GALVANIZED STEEL. ALL DUCTWORK SEAMS SHALL BE SEALED WITH HARD CAST MASTIC. DUCT SIZES SHOWN ON PLANS ARE SHEET METAL DIMENSIONS.
7. CEILING DIFFUSERS SHALL BE EQUAL TO TTUS MODEL, TDC-A-4A ADJUSTABLE, ALUMINUM, LOUVERED FACED DIFFUSER. SQUARE NECK DIFFUSER SHALL BE FURNISHED WITH SQUARE TO ROUND TRANSITION WHERE REQUIRED (REFER TO PLANS). MODULE SIZE SHALL BE 12X12 OR 24X24 AS INDICATED OF THE DRAWINGS. FURNISH WITH BORDER SUITABLE FOR CEILING. FINISH SHALL BE OFF-WHITE BAKED ENAMEL. DOUBLE DEFLECTION, FRONT BLADES VERTICAL. PROVIDE MODEL AG-15 OPPOSED BLADE DAMPER AT EACH GRILLE. FURNISH CHAMFER, FRAME, REGISTER SHALL BE OFF-WHITE BAKED ENAMEL. MOUNTING SCREWS SHALL MATCH GRILLE COLOR.
9. CEILING RETURN GRILLE SHALL BE EQUAL TO TTUS MODEL 350 R ALUMINUM GRILLE WITH 35-BLADE SETTING. SINGLE SET OF BLADES PARALLEL TO THE LONG DIMENSION. FURNISH WITH BORDER SUITABLE FOR CEILING. FINISH SHALL BE OFF-WHITE BAKED ENAMEL.
10. REFRIGERANT PIPING SHALL BE SIZED AND INSTALLED IN STRICT ACCORDANCE WITH MANUFACTURERS RECOMMENDATIONS. PIPING SHALL BE INSULATED WITH 3/4" ARMAFLEX INSULATION. INSULATION SHALL BE TIGHTLY BUTTED AND ALL SEAMS SEALED WITH WATERPROOF VAPOR BARRIER ADHESIVE.
11. CONDENSATE PIPING SHALL BE TYPE "L" COPPER PIPE WITH COPPER SWEAT FITTINGS. PIPING SHALL BE INSULATED WITH 3/4" ARMAFLEX INSULATION. INSULATION SHALL BE TIGHTLY BUTTED AND ALL SEAMS SEALED WITH WATERPROOF VAPOR BARRIER ADHESIVE.
12. ALL AIR QUANTITIES SHALL BE BALANCED TO WITHIN 10% OF QUANTITIES SHOWN ON THE PLANS BY AN INDEPENDENT BALANCE CONTRACTOR.
13. PROVIDE WALL MOUNTED THERMOSTAT FOR EACH A/C SYSTEM. CONTROL THE CONDENSING UNIT OF THE COOLING CYCLE AND THE ELECTRIC HEATER ON THE HEATING CYCLE.
14. PROVIDE A FIRST IN THE RETURN AIR OF ALL AIR HANDLERS UNDER 5 TONS AND A SMOKE DETECTOR IN THE SUPPLY AIR OF UNIT 5 TONS AND ABOVE. FOR EACH SMOKE DETECTOR FURNISH AND INSTALL A REMOTE ANNUNCIATOR PANEL WITH BOTH AUDIBLE AND VISUAL SIGNALS IN AN OCCUPIED AREA OF THE BUILDING.



SECTION AT KITCHEN EXHAUST HOOD DETAIL

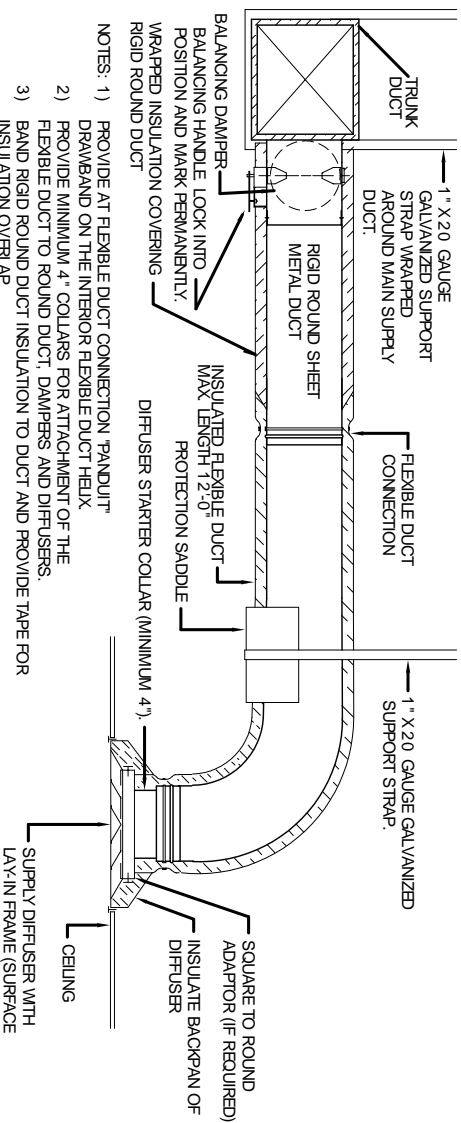
N.T.S.



UPBLAST EXHAUST FAN DETAIL

N.T.S.

- KITCHEN HOOD SYSTEM NOTES**
1. SUBCONTRACTOR TO SUBMIT SHOP DRAWINGS AND REVIEW/ PACKAGE SUITABLE FOR FIRE MARSHAL, KITCHEN HOOD REVIEW.
 2. SUBCONTRACTOR TO SUBMIT SHOP DRAWINGS AND REVIEW/ PACKAGE SUITABLE FOR FIRE MARSHAL, KITCHEN HOOD REVIEW.
 3. PROVIDE GAS SHUTOFF VALVE FOR ALL EQUIPMENT UNDER HOOD CONNECTED TO HOOD EXHAUST SYSTEM.
 4. PROVIDE SHUNT TRIP BREAKERS FOR ALL EQUIPMENT UNDER HOOD CONNECTED TO HOOD EXHAUST SYSTEM.



DIFFUSER CONNECTION DETAIL-FLEX DUCT

N.T.S.

AIR BALANCE SCHEDULE

	AHU-1	AHU-2	AHU-3	EF-1	EF-2	EF-3	HOOD
OUTSIDE AIR FLOW (CFM)	200	600	250				1200
RETURN AIR FLOW (CFM)	1300	3150	1625				
SUPPLY AIR FLOW (CFM)	1500	3750	1875				
EXHAUST AIR FLOW (CFM)				340	300	85	1600
BUILDING PRESSURE (CFM)	+200	+600	+250	-340	-300	-85	-400
QUANTITIES	1	3	1	1	1	2	1
TOTAL PRESSURIZATIONS	+200	+1800	+250	-340	-300	-170	-400
REMARKS							

RESULTING BUILDING PRESSURIZATION (CFM) = +1040

THRU - WALL AIR CONDITIONING SCHEDULE

UNIT NO.	NOM. CFM	TOTAL COOLING CAPACITY	ELEC HEAT KW	UNIT VOLTAGE	UNIT MCA	TRANE CO. MODEL NO.	REMARKS
TMU-1	350	14,300	3.5	208	20	PFD-15	1,2,3

1. CAPACITIES BASED ON STANDARD AIR CONDITIONS.
2. PROVIDE SUB-BASE WITH CONDENSED RECEPTACLE AND POWER CONRD.
3. PROVIDE CONDENSATE DRAIN KIT.

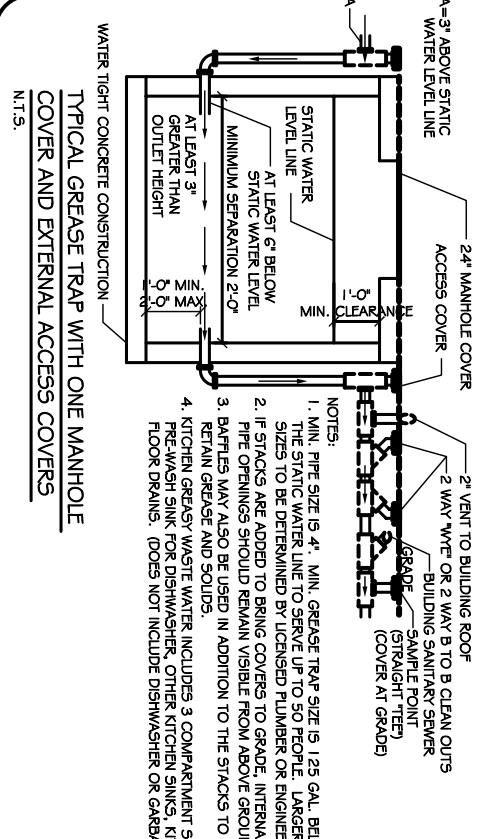
EXHAUST FAN SCHEDULE

FAN DESIG	TYPE	BALANCE CFM	SECTION CFM	S.P. IN. INCHES	RPM	MOTOR DATA HP VOLTS PH	COOK MODEL NO.	REMARKS
EF-1	CEILING MOUNTED	340	425	0.375	1075	1/3 120 1	Q6640	1,2,3,4,5
EF-2	CEILING MOUNTED	300	425	0.375	1075	1/3 120 1	Q6640	1,2,3,4,5
EF-3	CEILING MOUNTED	85	170	0.375	1500	1/6 120 1	GC-160	1,2,3,4,5
EF-4	NOT USED							
EF-5	CEILING MOUNTED	85	170	0.375	1500	1/6 120 1	GC-160	1,2,3,4,5

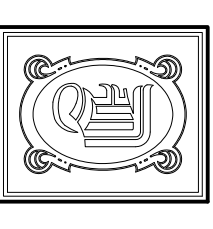
1. FAN SHALL BE SELECTED BASED ON SECTION CFM AND STATIC PRESSURE LISTED. FAN SHALL BE BALANCED IN FIELD TO BALANCE CFM INDICATED.
2. PROVIDE MANUAL STARTER MOUNTED ON WALL. LOCATION AS DIRECTED BY ARCHITECT.
3. PROVIDE SOUD STATE SPEED SWITCH MOUNTED ON FAN.
4. PROVIDE BACK DRAFT DAMPER AND DISCONNECT SWITCH.
5. PROVIDE ANODIZED ALUMINUM BRICK VENT WITH FAN SIZED PER MANUFACTURERS GUIDELINES OR AS INDICATED ON PLANS.

HVAC UNIT SCHEDULE

NO.	AIR CAPACITY			COOLING CAPACITY			MAX. COIL FLOW (GPM)	TRANE CO. MODEL NO.	ELECTRIC HEAT KW AT CONTROL STERS	CONDENSING UNIT UNIT MCA	WEIGHT LBS.	REMARKS						
	TOTAL CFM	MINIMUM CFM	EXT. S.P. INCHES	ENTERING BTU/HR	LEAVING BTU/HR	DB-F WB-F												
AHU-1	1500	200	0.5	57,596	35,251	76.8 65.9	53.2	500	TVE 060C	3/4	200	12	1	1,2,3				
AHU-2	3750	600	0.55	136,880	83,910	77.4 66.4	56.6	500	TVE 120B	2	500	26	2	(2) TTA 072C	208.8	27/40	275	1,2,3,4
AHU-3	3750	600	0.55	136,880	83,910	77.4 66.4	56.6	500	TVE 120B	2	500	26	2	(2) TTA 072C	208.8	27/40	275	1,2,3,4
AHU-4	3750	600	0.55	136,880	83,910	77.4 66.4	56.6	500	TVE 120B	2	500	26	2	(2) TTA 072C	208.8	27/40	275	1,2,3,4
AHU-5	1875	250	0.5	68,842	68,842	76.8 65.9	56.0	53.8	TVE 060C	3/4	200	12	1	TTA 072C	208.8	27/40	275	1,2,3



- TYPICAL GREASE TRAP WITH ONE MANHOLE COVER AND EXTERNAL ACCESS COVERS**
- N.T.S.
1. MIN. PIPE SIZE IS 4". MIN. GREASE TRAP SIZE IS 125 GAL. BELOW THE STATIC WATER LINE TO SERVE UP TO 50 PEOPLE. LARGER SIZES TO BE DETERMINED BY LICENSED PLUMBER OR ENGINEER.
 2. IF STACKS ARE ADDED TO BRING COVERS TO GRADE, INTERNAL PIPE OPENINGS SHOULD REMAIN VISIBLE FROM ABOVE GROUND.
 3. BARRIERS MAY ALSO BE USED IN ADDITION TO THE STACKS TO RETAIN GREASE AND SOLIDS.
 4. KITCHEN GREASEY WASTE WATER INCLUDES 3 COMPARTMENT SINK, PRE-WASH SINK FOR DISHWASHER, OTHER KITCHEN SINKS, KITCHEN FLOOR DRAINS. (DOES NOT INCLUDE DISHWASHER OR GARAGE GRINDERS).



DAMMON ENGINEERING, INC.
 CHIEF ENGINEER
 EMMETT DAMMON, P.E.
 CHIEF ARCHITECT
 ROBERT WILTSE

1095 FLORIDA AVENUE
 SUITE 11, LA 70456
 OFFICE: 985-649-5832
 FAX: 985-641-5950

WEBSITE:
 WWW.DAMMONENGINEERING.COM

EMAIL:
 DAMMONENG@BELL-SOUTH.NET

ARCHITECTURE
 ENGINEERING
 STUDIES
 PLANNING
 INVESTIGATION
 EXPERT WITNESS

NEW OFFICE COMPLEX

CHILD DEVELOPMENT COUNCIL OF ACADIANA, INC. OPELOUSAS, LA

MECHANICAL TITLE SHEET & DETAILS

REV: 12-7-09 CONST.

SCALE: AS NOTED

JOB#: 2030

DATE: 10-19-09

SHEET 18

M-1

OF 26