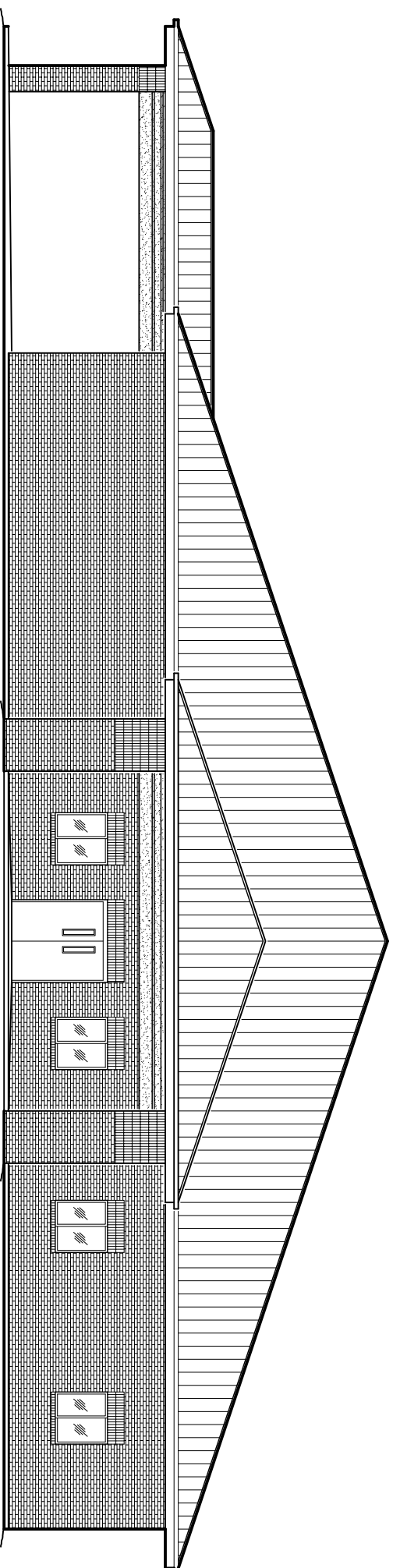


CHILD DEVELOPMENT COUNCIL OF ACADIANA, INC.



NEW OFFICE COMPLEX OPELOUSAS, LA

INTERNATIONAL BUILDING CODE 2006 REQUIREMENTS

OCCUPANCY CLASSIFICATION:
 BUSINESS, GROUP B. (SECT. 304.1)
 ASSEMBLY, GROUP A-3. (SECT. 303.1)

OCCUPANT LOAD: (TBL 1004.1.1)
 BUSINESS AREAS = 100 GROSS S.F./OCCUPANT
 ASSEMBLY AREAS = 1004.7 FIXED SEATING, NUMBER OF SEATS. 294.
 5,189 S.F. BUSINESS = 52 OCCUPANTS
 9,900 S.F. GROSS BUILDING
 TOTAL OF 346 OCCUPANTS

EXIT ACCESS REQUIREMENTS: (SEC. 1015)
 2 EXITS REQUIRED FOR > 49 OCCUPANTS IN BUSINESS OCCUPANCY, (2 EXITS PROVIDED)
 2 EXITS REQUIRED FOR > 49 OCCUPANTS IN ASSEMBLY OCCUPANCY, (2 EXITS PROVIDED)

EXIT ACCESS TRAVEL DISTANCE: (SECT. 1016)
 EXIT ACCESS TRAVEL DISTANCE = 200' UNSPRINKLED.

ALLOWABLE HEIGHT AND BLDG. AREA: (TBL 503)
 B = 23,000 S.F./4 STORY ALLOWED, THIS PROJECT 1 STORY 5,189 S.F.
 A-3 = 9,500 S.F./2 STORY ALLOWED, THIS PROJECT 1 STORY 4,711 S.F.

CONSTRUCTION CLASSIFICATION: (SEC. 602.2)
 TYPE IIB

FIRE RESISTANCE RATING REQUIREMENTS FOR BLDG. ELEMENTS: (TBL 601)
 STRUCTURAL FRAME= 0 HRS.
 BEARING WALLS (INTERIOR AND EXTERIOR)= 0 HRS.
 NON-BEARING WALLS= 0 HRS.
 FLOOR CONSTRUCTION= 0 HRS.
 ROOF CONSTRUCTION= 0 HRS.

FIRE RESISTANCE RATING REQUIREMENTS FOR EXTERIOR WALLS: (TBL 602)
 EXTERIOR WALLS WITH $10 < l \leq 30'$ FIRE SEPARATION DISTANCE= 0 HRS.

FIRE ALARM SYSTEM REQUIREMENTS: (SECT. 907)
 THIS BLDG. DOES NOT REQUIRE A FIRE ALARM SYSTEM IN ACCORDANCE WITH SECTION 907.2.1 AND 907.2.2.

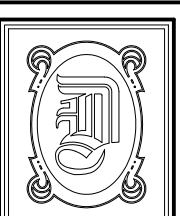
FIRE PROTECTION SYSTEM REQUIREMENTS: (SECT. 903)
 THIS BLDG. DOES NOT REQUIRE A FIRE PROTECTION SYSTEM IN ACCORDANCE WITH SECTION 903.2.1.3 GROUP A-3.

CONSTRUCTION DOCUMENTS: (SEC. 1603)
 THIS BLDG. SHALL BE DESIGNED IN ACCORDANCE WITH IBC SECTION 1609 AS A FULLY ENCLOSED BLDG. USING THE FOLLOWING INFORMATION:
 BASIC WIND SPEED (3 SECOND GUSTS) = 110 MPH (FIG. 1609)
 IMPORTANCE FACTOR CATEGORY III BLDG., IE = 1.00, IS = 1.0, IW = 1.00 (TBL. 1604.5)
 EXPOSURE B, DETERMINATION OF WIND LOADS SHALL BE IN ACCORDANCE WITH IBC SECTION 1609.4
 MINIMUM LIVE LOADS SHALL BE DETERMINED IN ACCORDANCE WITH TBL. 1607.1
 GROUND SNOW LOADS= 5 PSF (FIG. 1608.2)

BASED ON THE SURVEY OF THIS PROPERTY BY MORGAN GOUDREAU & ASSOC., REGISTERED LAND SURVEYOR ROBERT WOLFE, JR. No. 4548, F.I.R.M. COMMUNITY MAP NO. 220165 0175 B, REVISED 5/3/82. FLOOD ZONE: C

INDEX OF DRAWINGS

DWG#	DRAWING NAME	REVISED
C-1	COPY OF SURVEY	
C-2	SITE PLAN / ROOF PLAN	
C-3	DRAINAGE PLAN	
C-4	PAVING PLAN	
C-5	UTILITY PLAN	
C-6	PAVING NOTES & DETAILS	
S-1	FOUNDATION PLAN	
A-1	FLOOR PLAN	
A-2	SECTION	
A-3	ELEVATIONS	
A-4	ELEVATIONS	
A-5	REFLECTED CEILING PLAN	
H-1	HANDICAP DETAILS	
H-2	HANDICAP DETAILS	
M-1	MECHANICAL TITLE SHEET	
M-2	MECHANICAL PLAN	
E-1	ELECTRICAL TITLE SHEET	
E-2	LIGHTING PLAN	
E-3	POWER PLAN	
E-4	ELECTRICAL SCHEDULE AND ONE-LINE	
P-1	PLUMBING TITLE SHEET	
P-2	PLUMBING PLAN	



DAMMON ENGINEERING, INC.

1095 FLORIDA AVE. OFFICE: (985) 649-5832

SLIDELL, LA 70458

FAX: (985) 641-5950

WEBSITE: WWW.DAMMONENGINEERING.COM
 EMAIL: DAMMONENG@BELLSOUTH.NET

DATE: 07-2-09
 JOB NO. 2030

CHILD DEVELOPMENT
 COUNCIL OF
 ACADIANA, INC.
 OPELOUSAS, LA