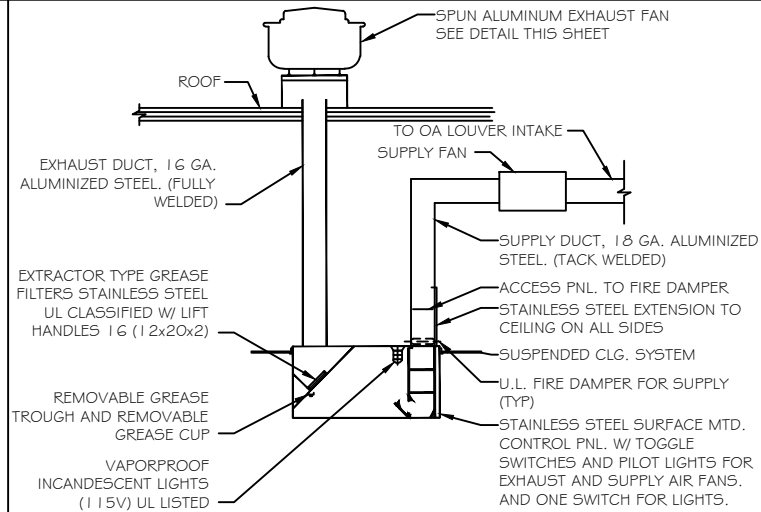


GENERAL NOTES:

1. ALL MECHANICAL WORK SHALL BE DONE IN STRICT ACCORDANCE WITH ALL STATE AND LOCAL CODES AND THE REQUIREMENTS OF THE STATE FIRE MARSHAL..
2. ALL BIDDERS MUST VISIT THE SIRE PRIOR TO SUBMITTING A BID AND BECOME FAMILIAR WITH ALL EXISTING CONDITIONS AS THEY RELATE TO THE WORK REQUIRED BY THESE DOCUMENTS. BIDDERS SHALL INCLUDE ALL COSTS ASSOCIATED WITH WORK REQUIRED BY EXISTING CONDITIONS. NO ADDITIONAL COMPENSATION SHALL BE AWARDED FOR FAILURE TO BE SO INFORMED.
3. BIDDERS SHALL INCLUDE IN THEIR BID ALL COSTS ASSOCIATED WITH PERMIT FEES, INSPECTIONS, UTILITY CONNECTIONS, METERS, JACKING AND BORING OR CUTTING AND PATCHING OF STREETS AS REQUIRED FOR BUILDING SERVICES, ETC. IT SHALL BE THE RESPONSIBILITY OF ALL BIDDERS TO CONTACT THE APPROPRIATE UTILITY COMPANIES OR CITY DEPARTMENTS AND TO FURNISH THEM WITH ALL PERTINENT INFORMATION ON REQUIRED SERVICES IN ORDER THAT PRICING FOR THESE CONNECTIONS CAN BE FURNISHED TO THE BIDDER IN SUFFICIENT TIME FOR THESE COSTS TO BE INCLUDED IN THE BID. NO ADDITIONAL COMPENSATION SHALL BE AWARDED AFTER BID TIME FOR FAILURE TO OBTAIN AND INCLUDE ALL ASSOCIATED COSTS IN THE BID.
4. CONTRACTOR SHALL COORDINATE ALL MECHANICAL WORK WITH WORK OF THE GENERAL CONTRACTOR AND ALL SUBCONTRACTORS AND EXISTING CONDITIONS SO AS TO AVOID CONFLICTS.
5. WHERE CUTTING AND PATCHING AND/OR BLOCKOUT INSTALLATION REQUIRED FOR MECHANICAL WORK IS TO BE DONE BY OTHER TRADES, THIS CONTRACTOR SHALL BE RESPONSIBLE FOR COORDINATION AND LAYOUT OF THE REQUIRED WORK.
6. OWNER SHALL HAVE RIGHT OF REFUSAL OF ALL DEMO MATERIALS. MATERIALS NOT CLAIMED SHALL BE REMOVED FROM THE SIRE AND DISPOSED OF PROPERLY.
7. MANUFACTURER'S NAMES AND MODEL NUMBERS LISTED ARE MEANT TO ESTABLISH A STANDARD. MANUFACTURERS PRODUCING EQUIPMENT OF EQUAL CAPACITY AND QUALITY SHALL BE ACCEPTABLE SUBJECT TO THE SUBMITTAL PROCESS.
8. REFER TO WRITTEN SPECIFICATIONS FOR DETAILS NOT COVERED ON THE PLANS. WHERE CONFLICT OCCURS BETWEEN PLANS AND SPECIFICATIONS, THE SPECIFICATION SHALL TAKE PRECEDENCE.

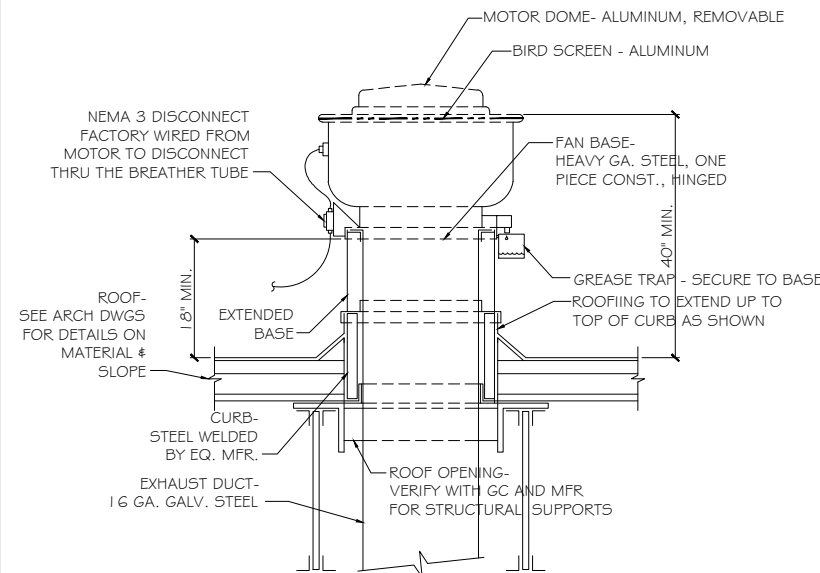
HVAC NOTES:

1. PRIOR TO FABRICATION OF ANY EQUIPMENT, DUCTWORK, ETC., CONTRACTOR SHALL REVIEW ENTIRE SET OF CONTRACT DOCUMENTS AND COORDINATE ALL CLEARANCES WITH RESPECT TO STRUCTURAL LIMITATIONS AS WELL AS REQUIRED WORK OF OTHER TRADES. ANY CONFLICTS SHALL BE RESOLVED PRIOR TO FABRICATION OF EQUIPMENT, DUCTWORK, ETC.
2. CONTRACT DOCUMENTS ARE NOT INTENDED TO BE DETAILED SHOP DRAWINGS. THEY DO NOT INDICATE IN HIS BID ALL COSTS FOR THESE OFFSETS THAT MAY BE REQUIRED TO ALLOW FOR STRUCTURAL MEMBERS, WORK OF OTHER TRADES, CROSSING OF DUCTS, ETC. NO ADDITIONAL COMPENSATION SHALL BE AWARDED FOR THIS WORK.
3. CONTRACTOR SHALL PROVIDE ALL REQUIRED PIPING CONNECTIONS TO EACH PIECE OF EQUIPMENT AS REQUIRED FOR THE PROPER OPERATION OF THE EQUIPMENT WHETHER SPECIFICALLY SHOWN OR NOT. THIS SHALL INCLUDE DRAIN PIPING, RELIEF LINES, WATER MAKE UP PIPING, ETC.
4. FLEXIBLE DUCT CONNECTIONS SHALL BE PROVIDED ON EACH FAN POWERED PIECE OF EQUIPMENT.
5. ALL DUCTWORK SHALL BE CONSTRUCTED AND INSTALLED IN STRICT ACCORDANCE WITH SMACNA GUIDELINES.
6. ALL NEW SUPPLY AIR DUCTS, RETURN AIR DUCTS, OUTSIDE AIR DUCTS AND PLENUMS SHALL BE GALVANIZED STEEL, EXTERNALLY INSULATED WITH 2" THICK 1 PCF DENSITY INSULATION WITH FOIL FACING. NEW FLEXIBLE DUCTWORK SHALL BE UL 181 LISTED, CLASS 1, PRE INSULATED AND PROPERLY SUPPORTED. PROVIDE SPIN FITTING WITH AIR SCOOP AND DAMPER AT EACH ROUND DUCT CONNECTION TO TRUNK DUCT. HARD ROUND DUCT SHALL BE GALVANIZED SPIRAL WITH EXTERNAL INSULATION. EXHAUST DUCTWORK SHALL BE UNLINED GALVANIZED STEEL. ALL DUCTWORK SEAMS SHALL BE SEALED WITH HARD CAST MASTIC. DUCT SIZES SHOWN ON PLANS ARE SHEET METAL DIMENSIONS.
7. CEILING DIFFUSERS SHALL BE EQUAL TO TITUS MODEL TDC-A-AA ADJUSTABLE, ALUMINUM, LOUVERED FACED DIFFUSER. SQUARE NECK DIFFUSER SHALL BE FURNISHED WITH SQUARE TO ROUND TRANSITION WHERE REQUIRED (REFER TO PLANS). MODULE SIZE SHALL BE 12x12 OR 24x24 AS INDICATED ON THE DRAWINGS. FURNISH WITH BORDER SUITABLE FOR CEILING. FINISH SHALL BE OFF-WHITE BAKED ENAMEL.
8. SIDE WALL SUPPLY REGISTER SHALL BE EQUAL TO TITUS MODEL 300FL EXTRUDED ALUMINUM, DOUBLE DEFLECTION, FRONT BLADES VERTICAL. PROVIDE MODEL AG-15 OPPOSED BLADE DAMPER AT EACH GRILLE. FURNISH CHANNEL FRAME. REGISTER SHALL BE OFF-WHITE BAKED ENAMEL. MOUNTING SCREWS SHALL MATCH GRILLE COLOR.
9. CEILING RETURN GRILLE SHALL BE EQUAL TO TITUS MODEL 350FL ALUMINUM GRILLE WITH 35-BLADE SETTING. SINGLE SET OF BLADES PARALLEL TO THE LONG DIMENSION. FURNISH WITH BORDER SUITABLE FOR CEILING. FINISH SHALL BE OFF-WHITE BAKED ENAMEL.
10. REFRIGERANT PIPING SHALL BE SIZED AND INSTALLED IN STRICT ACCORDANCE WITH MANUFACTURER'S RECOMMENDATIONS. PIPING SHALL BE INSULATED WITH 3/4" ARMAFLEX INSULATION. INSULATION SHALL BE TIGHTLY BUTTED AND ALL SEAMS SEALED WITH WATERPROOF VAPOR BARRIER ADHESIVE.
11. CONDENSATE PIPING SHALL BE TYPE "L" COPPER PIPE WITH COPPER SWEAT FITTINGS. PIPING SHALL BE INSULATED WITH 3/4" ARMAFLEX INSULATION. INSULATION SHALL BE TIGHTLY BUTTED AND ALL SEAMS SEALED WITH WATERPROOF VAPOR BARRIER ADHESIVE.
12. ALL AIR QUANTITIES SHALL BE BALANCED TO WITHIN 10% OF QUANTITIES SHOWN ON THE PLANS BY AN INDEPENDENT BALANCE CONTRACTOR.
13. PROVIDE WALL MOUNTED THERMOSTAT FOR EACH A/C SYSTEM. CONTROL THE CONDENSING UNIT OF THE COOLING CYCLE AND THE ELECTRIC HEATER ON THE HEATING CYCLE.
14. PROVIDE A FIRESTAT IN THE RETURN AIR OF ALL AIR HANDLERS UNDER 5 TONS AND A SMOKE DETECTOR IN THE SUPPLY AIR OF UNIT 5 TONS AND ABOVE. FOR EACH SMOKE DETECTOR FURNISH AND INSTALL A REMOTE ANNUNCIATOR PANEL WITH BOTH AUDIBLE AND VISUAL SIGNALS IN AN OCCUPIED AREA OF THE BUILDING.



SECTION AT KITCHEN EXHAUST HOOD DETAIL

N.T.S.

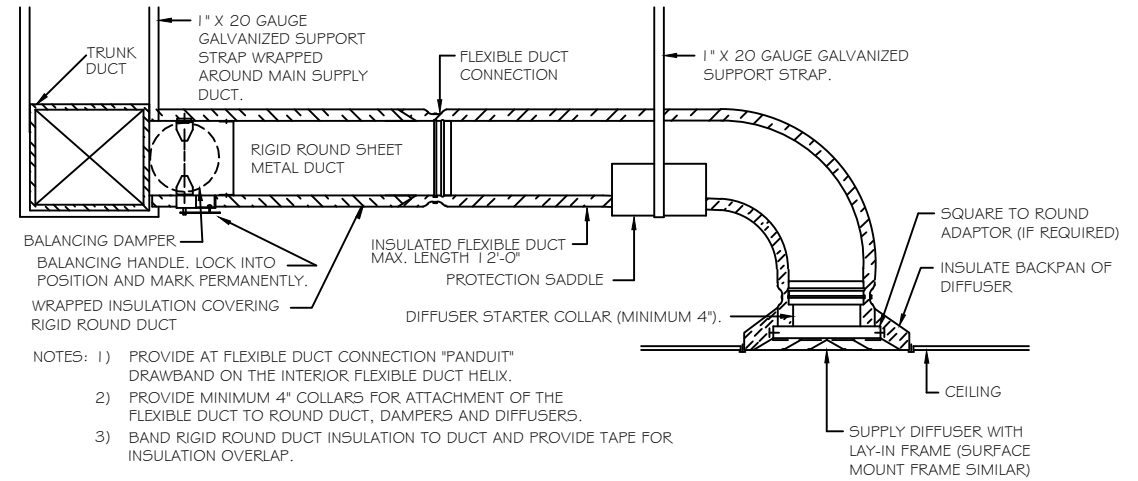


UPBLAST EXHAUST FAN DETAIL

N.T.S.

KITCHEN HOOD SYSTEM NOTES

1. SUBCONTRACTOR TO SUBMIT SHOP DRAWINGS AND REVIEW PACKAGE SUITABLE FOR FIRE MARSHAL KITCHEN HOOD REVIEW.
2. SUBCONTRACTOR TO SUBMIT SHOP DRAWINGS AND REVIEW PACKAGE SUITABLE FOR FIRE MARSHAL KITCHEN HOOD CHEMICAL FIRE SUPPRESSION SYSTEM REVIEW.
3. PROVIDE GAS SHUTOFF VALVE FOR ALL EQUIPMENT UNDER HOOD CONNECTED TO HOOD EXHAUST SYSTEM.
4. PROVIDE SHUNT TRIP BREAKERS FOR ALL EQUIPMENT UNDER HOOD CONNECTED TO HOOD EXHAUST SYSTEM.



DIFFUSER CONNECTION DETAIL-FLEX DUCT

N.T.S.

	AHU-1	AHU-2	AHU-3	AHU-4	AHU-5	EF-1	EF-2	EF-3	EF-5	HOOD
OUTSIDE AIR FLOW (CFM)	200	600	600	600	250					1200
RETURN AIR FLOW (CFM)	1300	3150	3150	3150	1625					
SUPPLY AIR FLOW (CFM)	1500	3750	3750	3750	1875					
EXHAUST AIR FLOW (CFM)						340	300	85	85	1600
BUILDING PRESSURE (CFM)	+200	+600	+600	+600	+250	-340	-300	-85	-85	-400
QUANTITIES	1	1	1	1	1	1	1	1	1	1
TOTAL PRESSURIZATIONS	+200	+600	+600	+600	+250	-340	-300	-85	-85	-400
REMARKS										
RESULTING BUILDING PRESSURIZATION (CFM) = +1040										

UNIT NO.	CAPACITIES			ELECTRIC DATA			TRANE CO. MODEL NO.	REMARKS
	NOM. CFM	TOTAL COOLING CAPACITY	ELEC HEAT KW	UNIT VOLTAGE	UNIT MCA			
TWU-1	350	14,300	3.5	208	20	PTED-15	1,2,3	

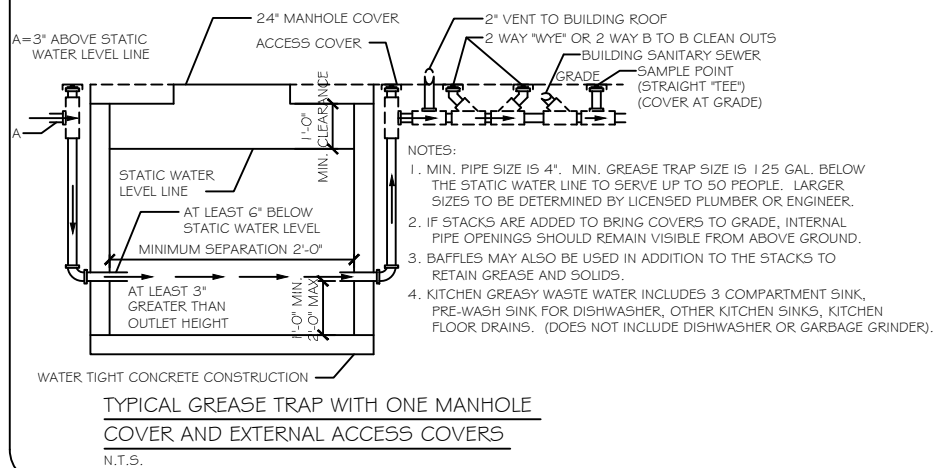
1. CAPACITIES BASED ON STANDARD AIR CONDITIONS.
2. PROVIDE SUB-BASE WITH CONCEALED RECEPTACLE AND POWER CORD.
3. PROVIDE CONDENSATE DRAIN KIT.

FAN DESIG.	TYPE	BALANCE CFM	SELECTION CFM	S.P. IN INCHES	RPM	MOTOR DATA			COOK MODEL NO.	REMARKS
						HP	VOLTS	PH.		
EF-1	CEILING MOUNTED	340	425	0.375	1075	1/3	120	1	GC640	1,2,3,4,5
EF-2	CEILING MOUNTED	300	425	0.375	1075	1/3	120	1	GC640	1,2,3,4,5
EF-3	CEILING MOUNTED	85	170	0.375	1500	1/6	120	1	GC-160	1,2,3,4,5
EF-4	NOT USED									
EF-5	CEILING MOUNTED	85	170	0.375	1500	1/6	120	1	GC-160	1,2,3,4,5

1. FAN SHALL BE SELECTED BASED ON SELECTION CFM AND STATIC PRESSURE LISTED. FAN SHALL BE BALANCED IN FIELD TO BALANCE CFM INDICATED.
2. PROVIDE MANUAL STARTER MOUNTED ON WALL - LOCATION AS DIRECTED BY ARCHITECT.
3. PROVIDE SOLID STATE SPEED SWITCH MOUNTED ON FAN.
4. PROVIDE BACK DRAFT DAMPER AND DISCONNECT SWITCH.
5. PROVIDE ANODIZED ALUMINUM BRICK VENT WITH FAN SIZED PER MANUFACTURERS GUIDELINES OR AS INDICATED ON PLANS.

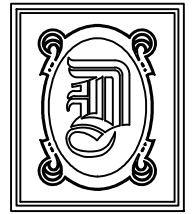
NO.	AIR CAPACITY			COOLING CAPACITY					ELECTRIC HEAT			CONDENSING UNIT			REMARKS					
	TOTAL CFM	MINIMUM O.A. CFM	EXT. S.P. INCHES	TOTAL BTU/HR.	SENSIBLE BTU/HR.	ENTERING DB° F	LEAVING DB° F	MAX. COIL FACE VEL.	KW AT 208V/3PH	CONTROL STEPS	TRANE CO. MODEL NO.	VOLTS/PH	UNIT MCA/MCOCP	WEIGHT LBS						
AHU-1	1500	200	0.5	57,596	35,251	76.8	65.9	55.0	53.2	500	TWE 060C	3/4	200	12	1	TTA 060C	208/3	26/40	250	1,2,3
AHU-2	3750	600	0.55	136,880	83,910	77.4	66.4	56.6	54.6	500	TWE 120B	2	500	26	2	(2) TTA 072C	208/3	27/40	275	1,2,3,4
AHU-3	3750	600	0.55	136,880	83,910	77.4	66.4	56.6	54.6	500	TWE 120B	2	500	26	2	(2) TTA 072C	208/3	27/40	275	1,2,3,4
AHU-4	3750	600	0.55	136,880	83,910	77.4	66.4	56.6	54.6	500	TWE 120B	2	500	26	2	(2) TTA 072C	208/3	27/40	275	1,2,3,4
AHU-5	1875	250	0.5	68,842	68,842	76.8	65.9	56.0	53.8	500	TWE 060C	3/4	200	12	1	TTA 072C	208/3	27/40	275	1,2,3

1. REFRIGERANT PIPING SHALL BE SIZED IN ACCORDANCE WITH MANUFACTURERS RECOMMENDATIONS.
2. AIR UNIT AND ELECTRIC HEATER SECTION SHALL INCORPORATE SINGLE POINT ELECTRICAL CONNECTION.
3. SYSTEM SHALL HAVE 2 REFRIGERANT CIRCUITS.
4. PROVIDE SMOKE DETECTOR IN RETURN AIR SYSTEM.



TYPICAL GREASE TRAP WITH ONE MANHOLE COVER AND EXTERNAL ACCESS COVERS

N.T.S.



DAMMON ENGINEERING, INC.

CHIEF ENGINEER
EMMETT DAMMON, P.E.

CHIEF ARCHITECT
ROBERT WILTSE

1095 FLORIDA AVENUE
SUDELL, LA. 70458
OFFICE: 985-649-5832
FAX: 985-641-5950

WEBSITE:
WWW.DAMMONENGINEERING.COM

EMAIL:
DAMMONENG@BELLSOUTH.NET

ARCHITECTURE

ENGINEERING

STUDIES

PLANNING

INVESTIGATION

EXPERT WITNESS

NEW OFFICE COMPLEX

CHILD DEVELOPMENT
COUNCIL OF
ACADIANA, INC.
OPELOUSAS, LA

MECHANICAL TITLE SHEET # DETAILS

REV: 12-7-09 CONST.
8-23-10 AS-BUILT

SCALE: AS NOTED

JOB#: 2030

DATE: 10-19-09

SHEET 18

M-1

OF 26