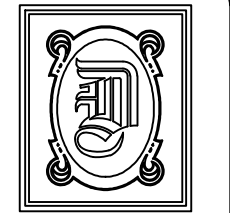


LEGEND

- INDICATES NEW SHEET METAL DUCTWORK FOR SUPPLY AIR, SIZES INDICATED ARE SHEET METAL DIMENSIONS. REFER TO SPECIFICATIONS FOR TYPE OF INSULATION.
- INDICATES NEW SHEET METAL DUCTWORK FOR RETURN AIR, SIZES INDICATED ARE SHEET METAL DIMENSIONS. REFER TO SPECIFICATIONS FOR TYPE OF INSULATION.
- ROUND FLEX DUCT, MAX. LENGTH 12'-0", MIN R-3.5
 - 0 <= 100 CFM USE 6" Ø
 - 101 <= 150 CFM USE 7" Ø
 - 151 <= 200 CFM USE 8" Ø
 - 201 <= 250 CFM USE 9" Ø
 - 251 <= 360 CFM USE 10" Ø
 - 361 <= 450 CFM USE 12" Ø
- INDICATES NEW CEILING DIFFUSER - CFM AS NOTED - 24x24 UNLESS OTHERWISE NOTED. SIZE INDICATES NECK SIZE
- INDICATES NEW RETURN AIR CEILING TRANSFER GRILLE OF SIZE INDICATED. TRANSFER DUCT TO BE FLEX OR RECTANGULAR AS INDICATED.
- EXHAUST FAN
- INDICATES NEW THERMOSTAT
- INDICATES WALL MOUNTED ANNUNCIATOR PANEL WITH VISUAL AND AUDIBLE SIGNAL TO INDICATE ALARM CONDITIONS OF DUCT MOUNTED SMOKE DETECTOR. PROVIDE ONE PANEL FOR EACH AIR UNIT (NOT REQUIRED IF BUILDING HAS FIRE ALARM).
- INDICATES NEW SMOKE DETECTOR (DUCT MOUNTED UNLESS NOTED OTHERWISE)
- INDICATES NEW DUCT MOUNTED FIRESTAT - SEE AT 135"
- MVD - DENOTES MANUAL VOLUME DAMPER
- FD - DENOTES FIRE DAMPER



DAMMON ENGINEERING, INC.

CHIEF ENGINEER
EMMETT DAMMON, P.E.

CHIEF ARCHITECT
ROBERT WILTSE

1095 FLORIDA AVENUE
SLIDELL, LA. 70458
OFFICE: 985-649-5832
FAX: 985-641-5950

WEBSITE:
WWW.DAMMONENGINEERING.COM

EMAIL:
DAMMONENG@BELL SOUTH.NET

- ARCHITECTURE
- ENGINEERING
- STUDIES
- PLANNING
- INVESTIGATION
- EXPERT WITNESS

NEW OFFICE COMPLEX

CHILD DEVELOPMENT COUNCIL OF ACADIANA, INC. OPELOUSAS, LA

MECHANICAL PLAN

REV: 12-7-09 CONST.
8-23-10 AS-BUILT
8-3-10 C.O.

SCALE: AS NOTED

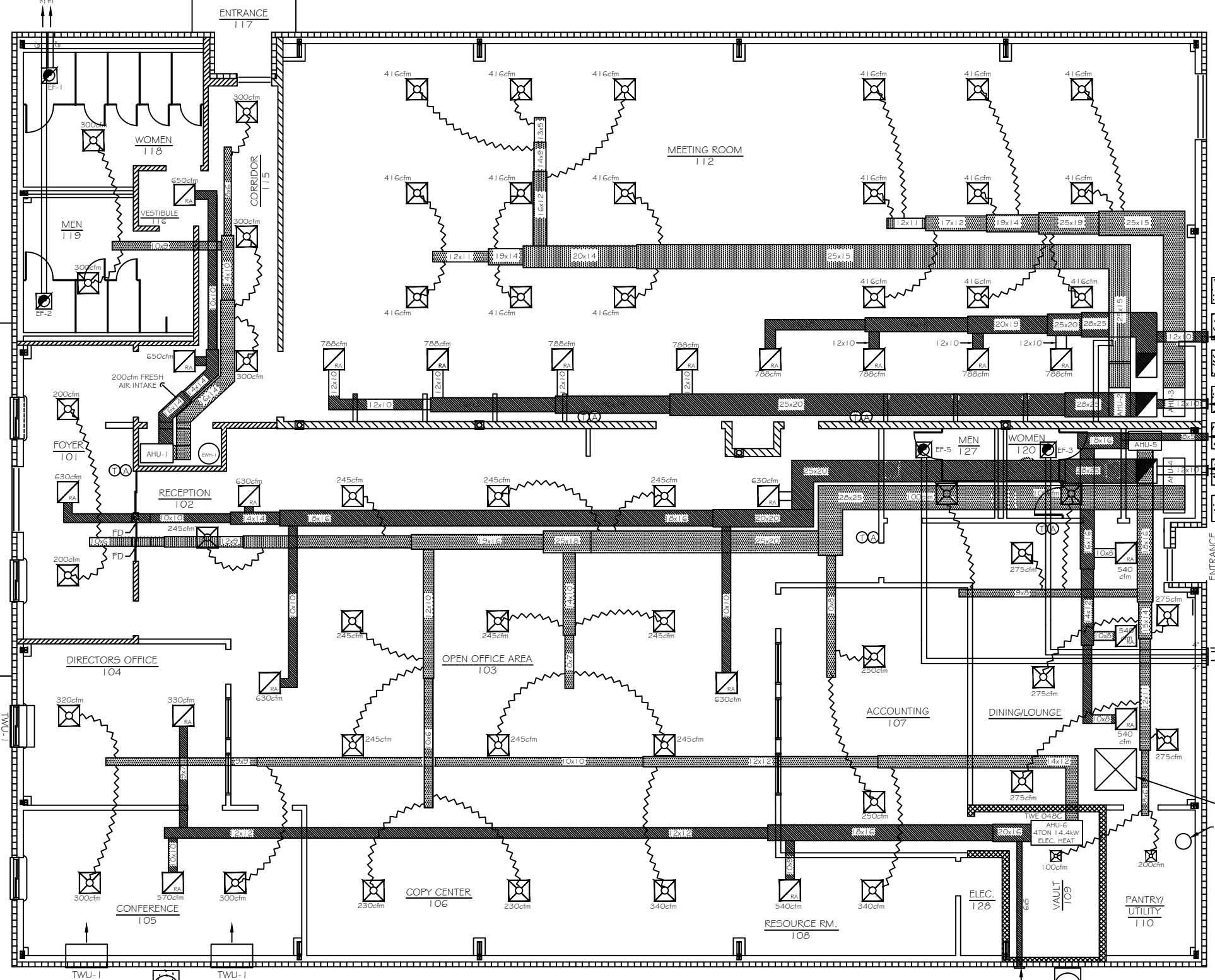
JOB#: 2030

DATE: 10-19-09

SHEET 20

M-3

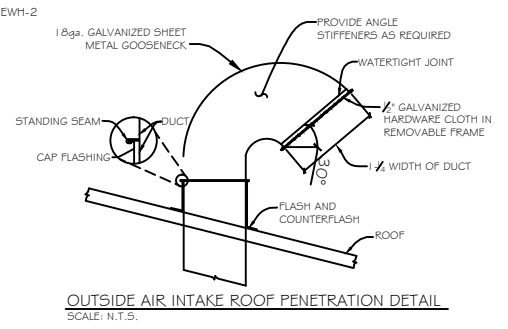
OF 26



- COND. UNIT 2A
- COND. UNIT 2B - 600cfm FRESH AIR INTAKE
- COND. UNIT 3A
- COND. UNIT 3B - 600cfm FRESH AIR INTAKE
- COND. UNIT 4A - 250cfm FRESH AIR INTAKE
- COND. UNIT 4B - 600cfm FRESH AIR INTAKE
- COND. UNIT 5

KITCHEN PRESSURIZATION:
+1700 SUPPLY
-1750 RETURN
-400 EXHAUST HOOD
= -450 CFM

NOTE: FRESH AIR INTAKES AND EXHAUST DUCTS MAY BE RUN TO AND TERMINATE AT SOFFIT IN LIEU OF PENETRATING ROOF OR BRICK VENEER.



MECHANICAL PLAN
SCALE: 3/16" = 1'-0"

COND. UNIT No. 1