

**DAMMON**  
ENGINEERING, INC.

CHIEF ENGINEER  
EMMETT  
DAMMON, P.E.

CHIEF ARCHITECT  
ROBERT  
WILTSE

1095 FLORIDA AVENUE  
SLIDELL, LA. 70458  
OFFICE: 985-649-5832  
FAX: 985-641-5950

WEBSITE:  
WWW.DAMMONENGINEERING.COM

EMAIL:  
DAMMONENG@BELLSOUTH.NET

ARCHITECTURE  
ENGINEERING  
STUDIES  
PLANNING  
INVESTIGATION  
EXPERT WITNESS

**NEW  
CREMATORY  
AND EMBALMING  
FACILITY**

HONAKER FUNERAL  
HOME  
TERRY TRANCHINA  
1751 W. GAUSE BLVD  
SLIDELL, LA

CROSS  
SECTION



REV: 12-04-09

SCALE: AS NOTED

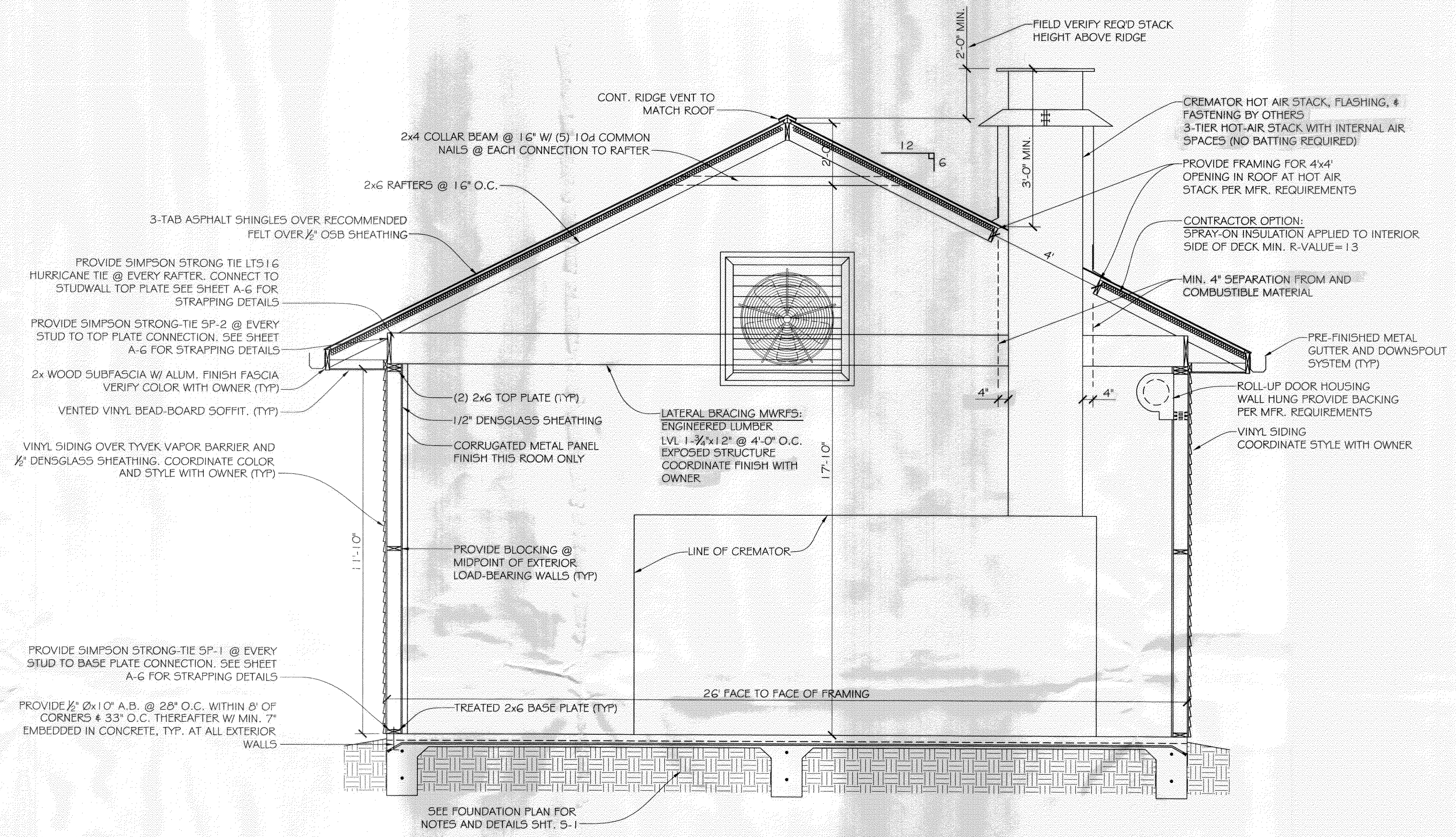
JOB#: 1999

DATE: 6-9-09

SHEET 9

**A-3**

OF 19



CROSS SECTION **B**  
SCALE: 1/2" = 1'-0"

371441  
REVIEWED FOR  
STATE FIRE MARSHAL  
AS PER REVIEW LETTER  
BY: WILLIAM D. JONES, ARCHITECT, CBO  
*William D. Jones*