

DAMMON
ENGINEERING, INC.

CHIEF ENGINEER
EMMETT
DAMMON, P.E.

CHIEF ARCHITECT
ROBERT
WILTSE

1095 FLORIDA AVENUE
SLIDELL, LA. 70458
OFFICE: 985-649-5832
FAX: 985-641-5950

WEBSITE:
WWW.DAMMONENGINEERING.COM

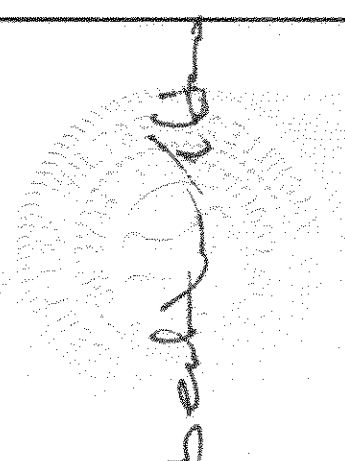
EMAIL:
DAMMONENG@BELLSOUTH.NET

ARCHITECTURE
ENGINEERING
STUDIES
PLANNING
INVESTIGATION
EXPERT WITNESS

**NEW
CREMATORY
AND EMBALMING
FACILITY**

HONAKER FUNERAL
HOME
TERRY TRANCHINA
1751 W. GAUSE BLVD.
SLIDELL, LA

**EXTERIOR
ELEVATIONS**



SEE ATTACHED
REVISED SHEET

REV:

SCALE: AS NOTED

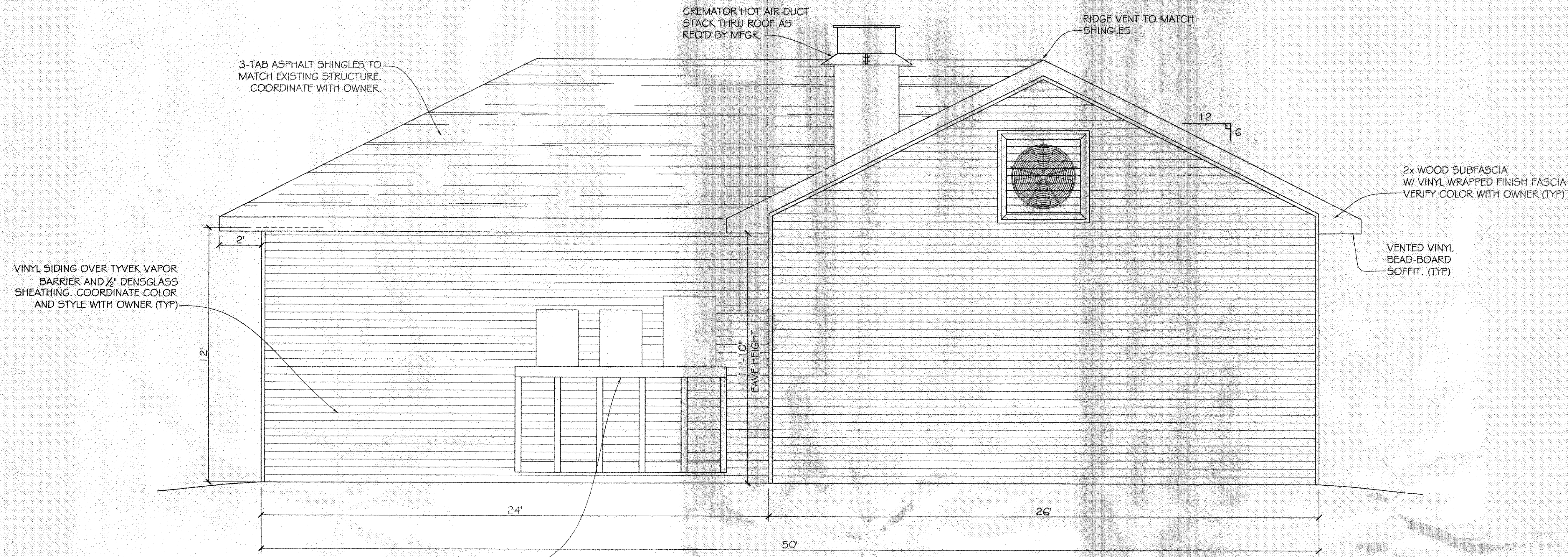
JOB#: 1999

DATE: 6-9-09

SHEET 12

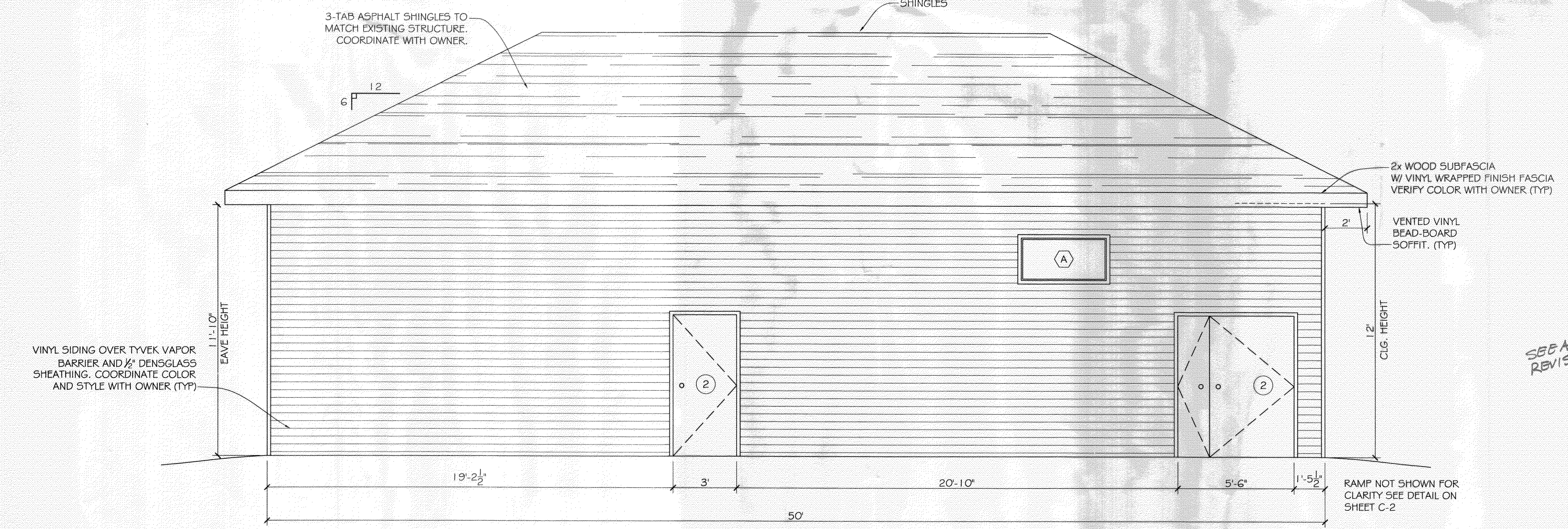
A-6

OF 19



EAST ELEVATION

SCALE: 3/8" = 1'-0"



WEST ELEVATION

SCALE: 3/8" = 1'-0"