

**GA FILE NO. WIP 4136 GENERIC**

BASE LAYER SEE TYPE X GYPSUM WALLBOARD APPLIED AT RIGHT ANGLES TO EACH SIDE OF 2 X 4 WOOD STUDS 16" O.C. WITH 1/4" TYPE W DRYWALL SCREWS 12" O.C. FACE LAYER SEE TYPE X GYPSUM WALLBOARD APPLIED AT RIGHT ANGLES TO EACH SIDE WITH 1/2" TYPE W DRYWALL SCREWS 12" O.C. AND OFFSET F FROM SCREWS IN BASE LAYER.

JOINTS STAGGERED 18" EACH LAYER AND SIDE (LOAD BEARING)

THICKNESS: 8" PER 1HS-200-877.3, 15-00 (LSD BRKDN)

FIRE TEST: ITS-200-877.3, 15-00

**GA FILE NO. WIP 4230 GENERIC**

BASE LAYER SEE TYPE X GYPSUM WALLBOARD APPLIED AT RIGHT ANGLES TO EACH SIDE OF 2 X 4 WOOD STUDS 24" O.C. WITH 2 1/4" TYPE W OR W DRYWALL SCREWS 24" O.C. FACE LAYER SEE TYPE X GYPSUM WALLBOARD APPLIED AT RIGHT ANGLES TO EACH SIDE WITH 1/2" TYPE W DRYWALL SCREWS 12" O.C. AND OFFSET F FROM SCREWS IN STUD SPACE.

JOINTS STAGGERED 24" EACH LAYER AND SIDE.

TESTED AT 1500 LBS PER STUD OR 100 PERCENT OF DESIGN LOAD.

THICKNESS: 8" PER 1HS-200-877.3, 15-00 (LSD BRKDN)

FIRE TEST: ITS-200-877.3, 15-00

**GA FILE NO. WIP 4136 GENERIC**

BASE LAYER SEE TYPE X GYPSUM WALLBOARD APPLIED AT RIGHT ANGLES TO EACH SIDE OF 2 X 4 WOOD STUDS 16" O.C. WITH 1/4" TYPE W DRYWALL SCREWS 12" O.C. FACE LAYER SEE TYPE X GYPSUM WALLBOARD APPLIED AT RIGHT ANGLES TO EACH SIDE WITH 1/2" TYPE W DRYWALL SCREWS 12" O.C. AND OFFSET F FROM SCREWS IN BASE LAYER.

JOINTS STAGGERED 18" EACH LAYER AND SIDE (LOAD BEARING)

THICKNESS: 40 TO 44 STC SOUND

2 HOUR FIRE: 40 TO 44 STC SOUND

6" PER 1HS-200-877.3, 15-00 (LSD BRKDN)

FIRE TEST: ITS-200-877.3, 15-00

**GA FILE NO. WIP 4230 GENERIC**

BASE LAYER SEE TYPE X GYPSUM WALLBOARD APPLIED AT RIGHT ANGLES TO EACH SIDE OF 2 X 4 WOOD STUDS 24" O.C. WITH 2 1/4" TYPE W OR W DRYWALL SCREWS 24" O.C. FACE LAYER SEE TYPE X GYPSUM WALLBOARD APPLIED AT RIGHT ANGLES TO EACH SIDE WITH 1/2" TYPE W DRYWALL SCREWS 12" O.C. AND OFFSET F FROM SCREWS IN STUD SPACE.

JOINTS STAGGERED 24" EACH LAYER AND SIDE.

TESTED AT 1500 LBS PER STUD OR 100 PERCENT OF DESIGN LOAD.

THICKNESS: 8" PER 1HS-200-877.3, 15-00 (LSD BRKDN)

FIRE TEST: ITS-200-877.3, 15-00

**LEGEND**

- 1 HR. RATED CONST. DEMISE TO ROOF DECK
- 2 HR. RATED CONST. DEMISE TO ROOF DECK
- ROLLING FIRE SHUTTER
- VAULT CONSTRUCTION
- WD. STD. & GYP. BD. PARTITIONS
- 4" FACE BRICK

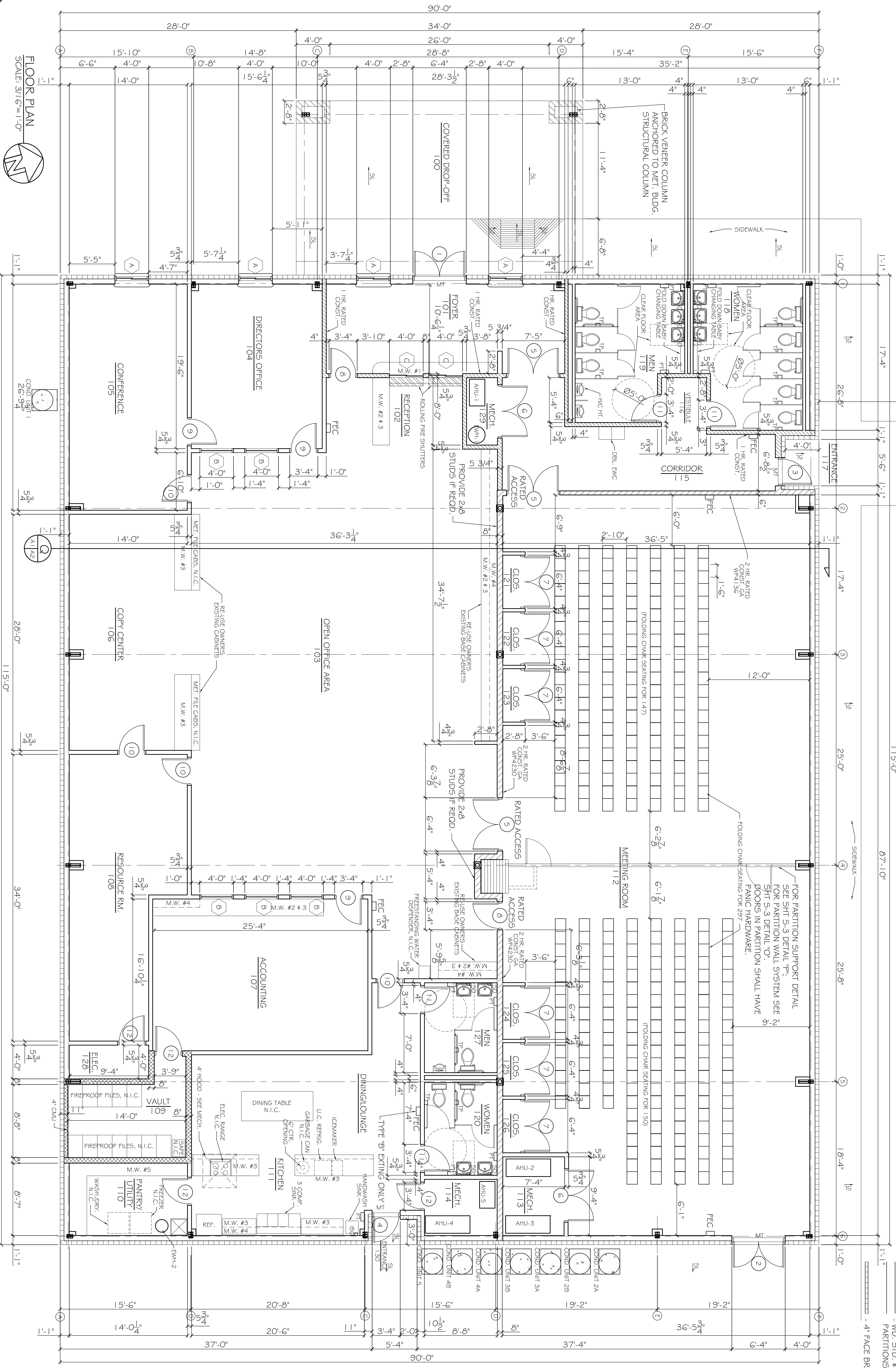
**NOTES:**

- SEE SHTS S-2, A-3 & A-4 FOR LOCATION OF EXTERIOR WALL CONTROL JOINTS.
- INSTALL SOAP (SD), PAPER TOWEL (PT) & TOILET PAPER (TP) DISPENSERS TO BE PROVIDED BY OWNER.

**DAMMON ENGINEERING, INC.**  
 CHIEF ENGINEER  
 EMMETT DAMMON, P.E.  
 CHIEF ARCHITECT  
 ROBERT WILTSE

1095 FLORIDA AVENUE  
 SLIDELL, LA, 70458  
 OFFICE: 985-649-5532  
 FAX: 985-641-5950

WWW.DAMMONENGINEERING.COM  
 EMAIL: DAMMONENG@Bellsouth.net



**FLOOR PLAN**  
 SCALE: 3/16"=1'-0"

**CHILD DEVELOPMENT COUNCIL OF ACADIANA, INC. OPELOUSAS, LA**

**NEW OFFICE COMPLEX**

ARCHITECTURE  
 ENGINEERING  
 STUDIES  
 PLANNING  
 INVESTIGATION  
 EXPERT WITNESSES

**DAMMON ENGINEERING, INC.**  
 CHIEF ENGINEER  
 EMMETT DAMMON, P.E.  
 CHIEF ARCHITECT  
 ROBERT WILTSE

1095 FLORIDA AVENUE  
 SLIDELL, LA, 70458  
 OFFICE: 985-649-5532  
 FAX: 985-641-5950

WWW.DAMMONENGINEERING.COM  
 EMAIL: DAMMONENG@Bellsouth.net

REV: 12-4-09 F.M.  
 REV. 12-7-09 CONST.  
 SCALE: AS NOTED  
 JOB#: 2030  
 DATE: 10-19-09  
 SHEET 10

OF 26