

**DAMMON**  
ENGINEERING, INC.

CHIEF ENGINEER  
EWMETT  
DAMMON, P.E.  
CHIEF ARCHITECT  
ROBERT  
WILTSE

1 095 FLORIDA AVENUE  
SLIDELL, LA, 70456  
OFFICE: 985-649-5632  
FAX: 985-641-5950

WEBSITE:  
WWW.DAMMONENGINEERING.COM  
EMAIL:  
DAMMONENG@Bellsouth.net

ARCHITECTURE  
ENGINEERING  
STUDIES  
PLANNING  
INVESTIGATION  
EXPERT WITNESSES

NEW OFFICE  
COMPLEX

CHILD DEVELOPMENT  
COUNCIL OF  
ACADIANA, INC.  
OPELOUSAS, LA

LIGHTING  
PLAN

REV.: 12-7-09 CONST.

SCALE: AS NOTED

JOB#: 2030

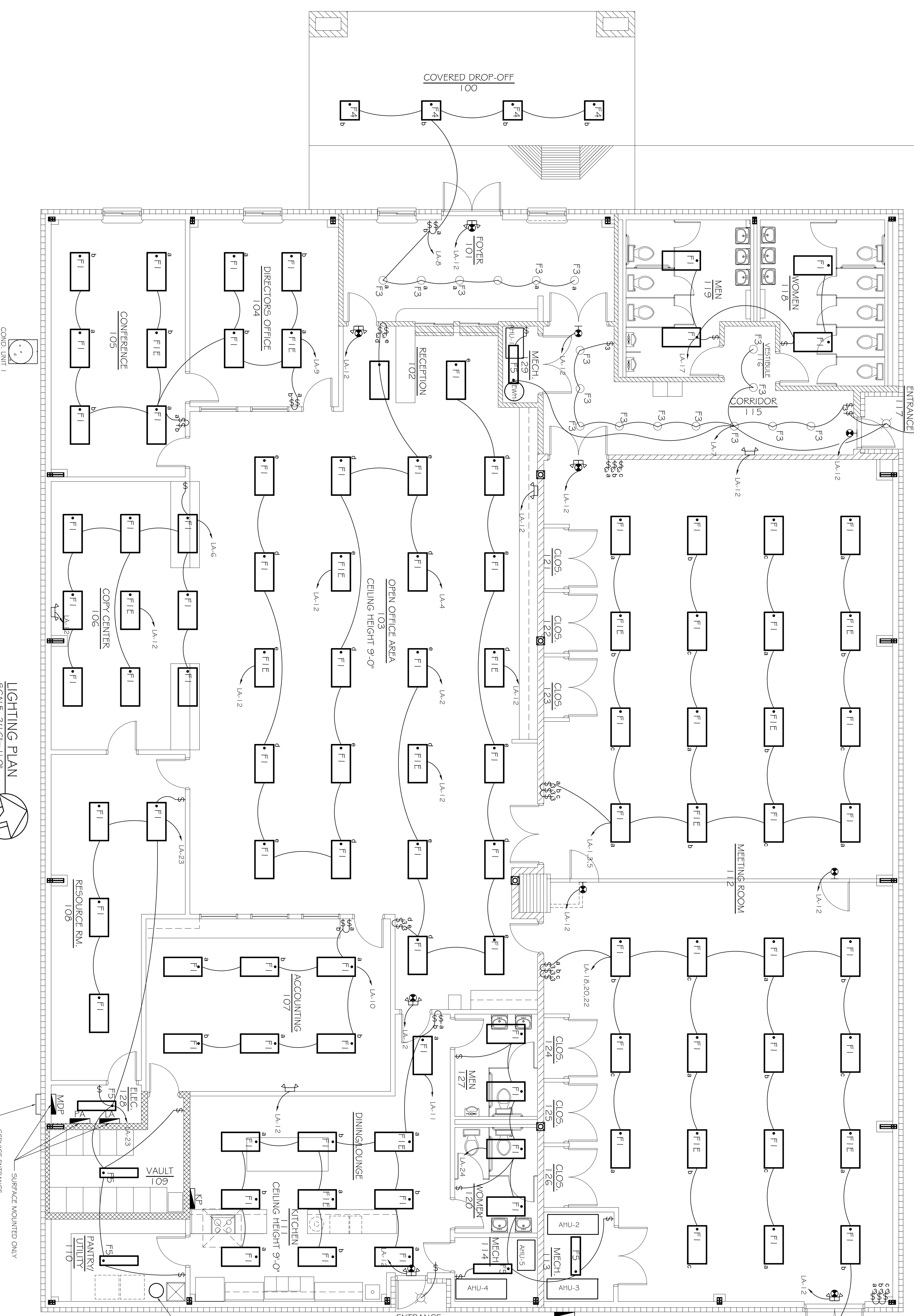
DATE: 10-19-09

SHEET 22

E-2

OF 26

- LEGEND**
- ◻ - 2x4' RECESSED FLUORESCENT LAMP, STEEL HOUSING
  - ◻ - 1'x4' RECESSED FLUORESCENT LAMP, STEEL HOUSING, 2 BULB FIXT.
  - ◻ - 2x2' RECESSED FLUORESCENT LAMP, STEEL HOUSING
  - ◻ - EMERGENCY LIGHT WITH 90 MIN. BATTERY BACKUP
  - - INCANDESCENT / H.I.D. FIXTURE
  - - INCANDESCENT EXTERIOR FIXTURE
  - ⊞ - POWER PANEL
  - ⊞ - SWITCH
  - ⊞ - 3-WAY SWITCH
  - ⊞ - EXIT LIGHT, 90 MINUTE BATTERY BACK-UP



LIGHTING PLAN  
SCALE: 3/16"=1'-0"

