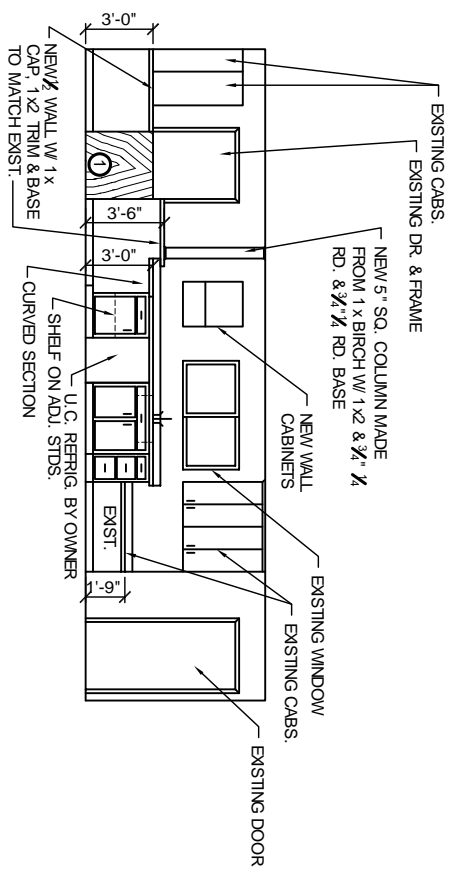
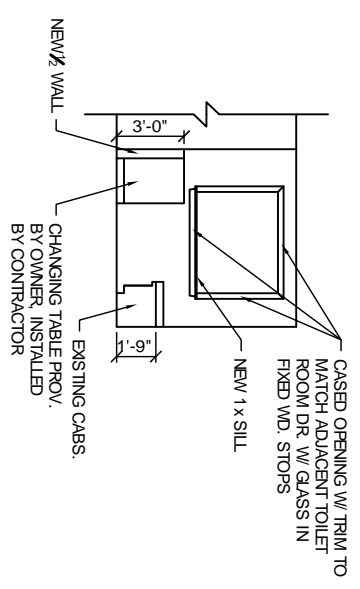


FLOOR PLAN
SCALE: 1/4" = 1'-0"

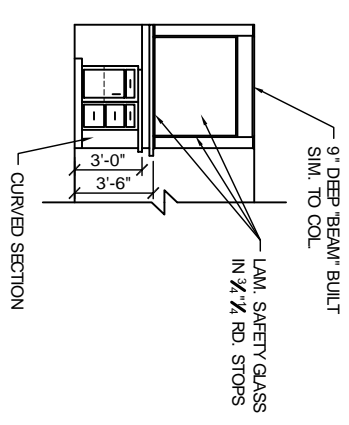
- NOTES**
1. IN GENERAL, FINISHES, MATERIALS, ETC. TO MATCH EXISTING.
 2. CONNECT TO EXIST. ELEC., PLUMBING, ETC. AS REQD.
 3. RELOCATE VARIOUS ITEMS AS REQD.
 4. DR. MK. 1 TO BE SOLID CORE WD. DR. W LEVER. PASSAGE LOOK W CONT. STOP @ STRIKE.
 5. SINK S-1 TO BE ELKAY DLR312212 W/ 710-MHDF FAUCET & RETRACTABLE SPRAY & HOSE. CAST P. TRAP W/ CLEANOUT, ANGLE STOPS, STRAINER, ETC. AS REQD. FOR A COMPLETE INSTALLATION.
 6. NEW 1/2 WALLS TO BE CONSTRUCTED OF TYPE "X" GYP. BD. ON EA. SIDE OF 2x4 STUDS @ 16" O.C., OR 3 3/4" MET. STUDS @ 16" O.C.



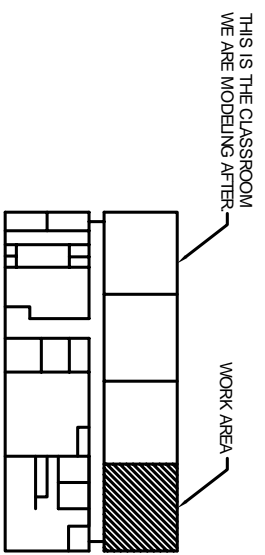
INTERIOR ELEVATION #1
SCALE: 1/4" = 1'-0"



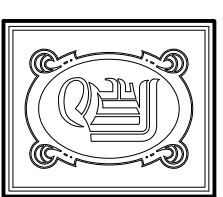
INTERIOR ELEVATION #2
SCALE: 1/4" = 1'-0"



INTERIOR ELEVATION #3
SCALE: 1/4" = 1'-0"



KEY PLAN



DAMMON ENGINEERING, INC.

CHIEF ENGINEER
EMMETT DAMMON, P.E.

CHIEF ARCHITECT
ROBERT WILTSE

1095 FLORIDA AVENUE
SLIDELL, LA, 70458
OFFICE: 985-649-5832
FAX: 985-641-5950

WEBSITE:
WWW.DAMMONENGINEERING.COM

EMAIL:
DAMMONENG@BELL-SOUTH.NET

ARCHITECTURE
ENGINEERING
STUDIES
PLANNING
INVESTIGATION
EXPERT WITNESS

NEW LEBEAU
HEAD START
CLASSROOM
RENOVATIONS

EARLY HEAD START
HWY 10
LEBEAU, LA

FLOOR PLAN,
ELEVATIONS
AND NOTES

REV:	
SCALE:	AS NOTED
JOB#:	2052
DATE:	12-11-09
SHEET:	1

A-1