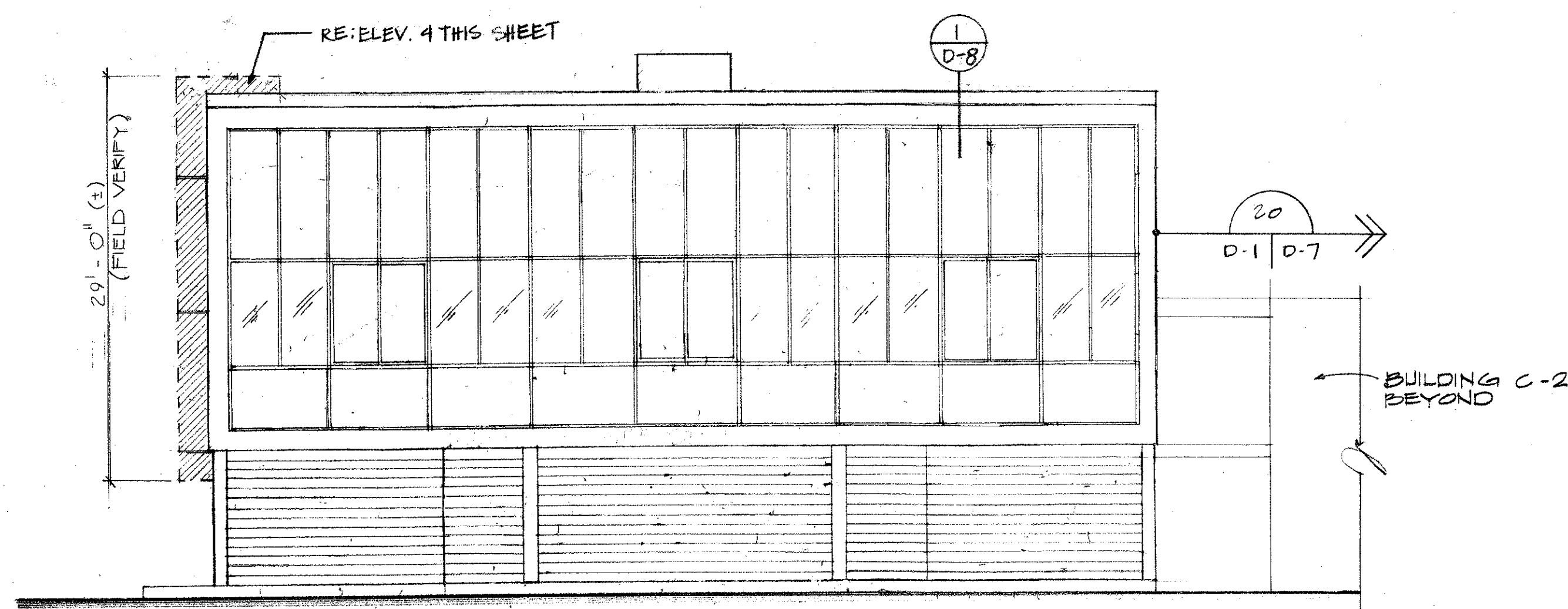
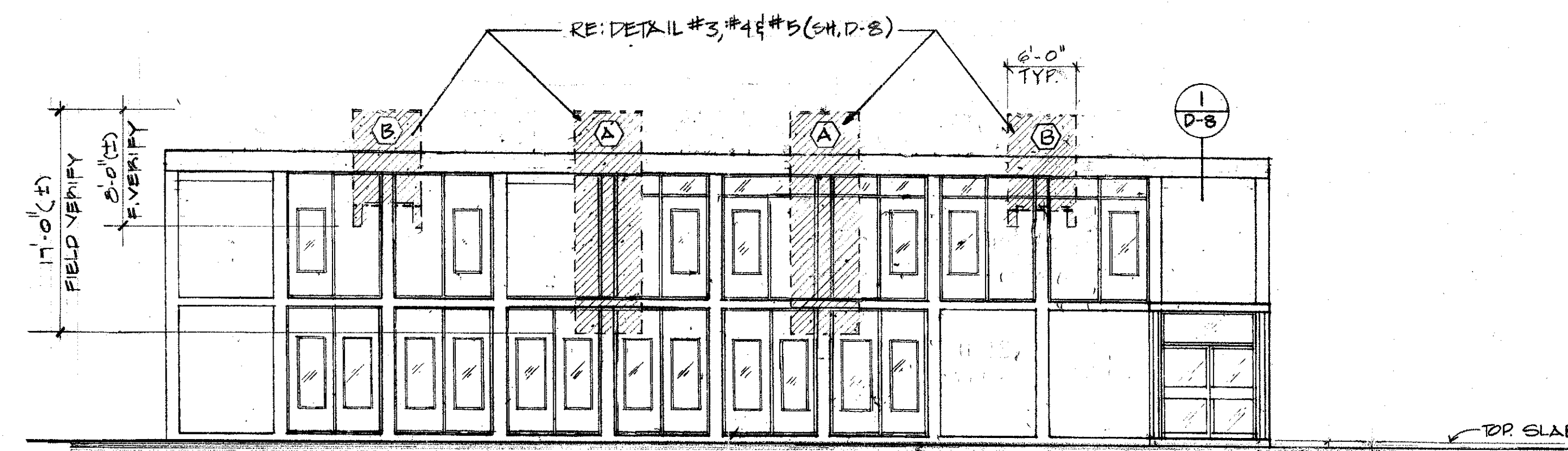


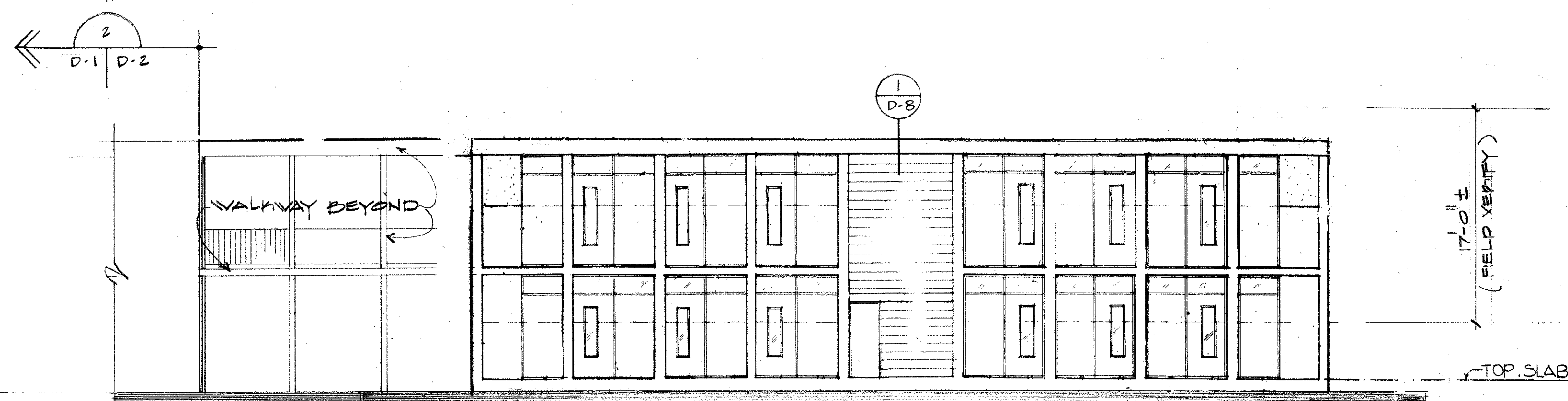
4 ELEVATION "BLDG E" FRONT STREET
D:1 | D:2 1/8" = 1'-0"



3 ELEVATION "BLDG E" THIRD STREET
D:1 | D:2 1/8" = 1'-0"



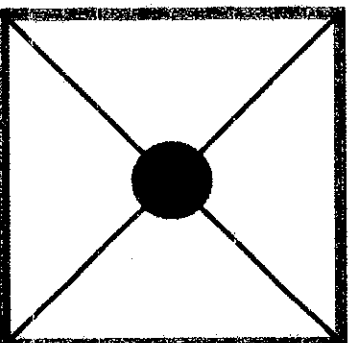
2 ELEVATION "BLDG C-1" THIRD ST.
D:1 | D:2 1/8" = 1'-0"



1 ELEVATION "BLDG A" THIRD ST.
D:1 | D:2 1/8" = 1'-0"

AIR CONDITIONING UNIT LEGEND

- (A) A/C UNIT- SIZE AS DEFINED THIS SHEET & DETAIL #5/ SH. NO. D-8
- (B) A/C UNIT- SIZE AS DEFINED THIS SHEET & DETAIL #5/ SH. NO. D-8
- (C) A/C UNIT- SIZE AS DEFINED THIS SHEET & DETAIL #5/ SH. NO. D-8



CONSULTANT
BYRON J. STEWART & ASSOC.
ARCHITECTS & PLANNERS
2500 MARENGO ST.
NEW ORLEANS, LA 70115
(504) 897-5339

CLIENT
NEW ORLEANS PARISH
SCHOOL BOARD
4300 ALMONASTER AVE.
NEW ORLEANS, LA

PROJECT
CARTER G. WOODSON JUN. HIGH SCHOOL
RE-ROOFING & MECHANICAL REPAIRS
F.D.P. # 92034

JOB NUMBER: 9602
DATE: 4-21-97
DRAWN BY:
CHECKED BY: B.J.S.

REVISIONS		
NO.	DATE	REVISION

SHEET

D-2

OF SHEETS