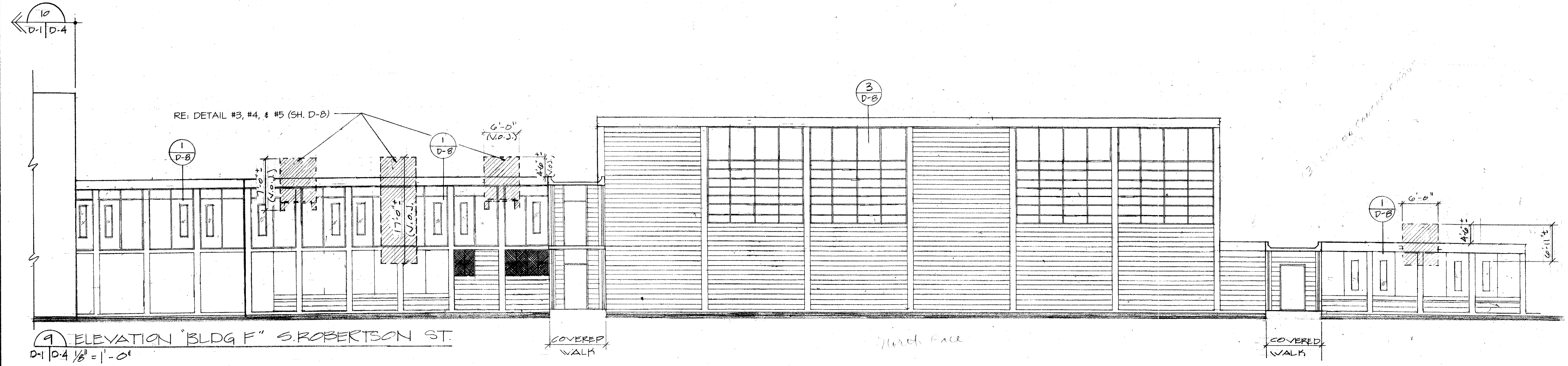
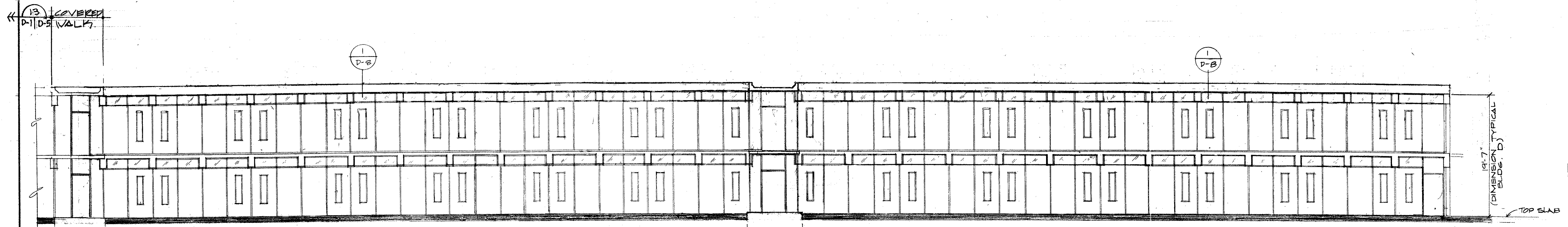


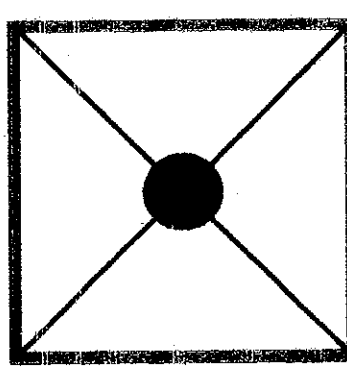
10 ELEVATION "BLDG E" S. ROBERTSON
D-1/D-4 1/8" = 1'-0"



9 ELEVATION "BLDG F" S. ROBERTSON ST.
D-1/D-4 1/8" = 1'-0"



8 ELEVATION "BLDG D" S. ROBERTSON ST.
D-1/D-4 1/8" = 1'-0"



CONSULTANT
BYRON J. STEWART & ASSOC.
ARCHITECTS & PLANNERS
2800 MARENGO ST.
NEW ORLEANS, LA 70115
(504) 877-5539

CLIENT
NEW ORLEANS PARISH
SCHOOL BOARD
4300 ALMONASTER AVE.
NEW ORLEANS, LA

PROJECT
CARTER G. WOODSON JUN. HIGH SCHOOL
RE-ROOFING & MECHANICAL REPAIRS
F.D.P. # 92034

JOB NUMBER: 9602
DATE: 4-21-97
DRAWN BY:
CHECKED BY: B.J.S.

REVISIONS		
NO.	DATE	REVISION

SHEET
D-4
OF SHEETS