

CONSULTANT
 BYRON J. STEWART & ASSOC.
 ARCHITECTS & PLANNERS
 2300 MARENGO ST.
 NEW ORLEANS, LA 70115
 (504) 897-5339

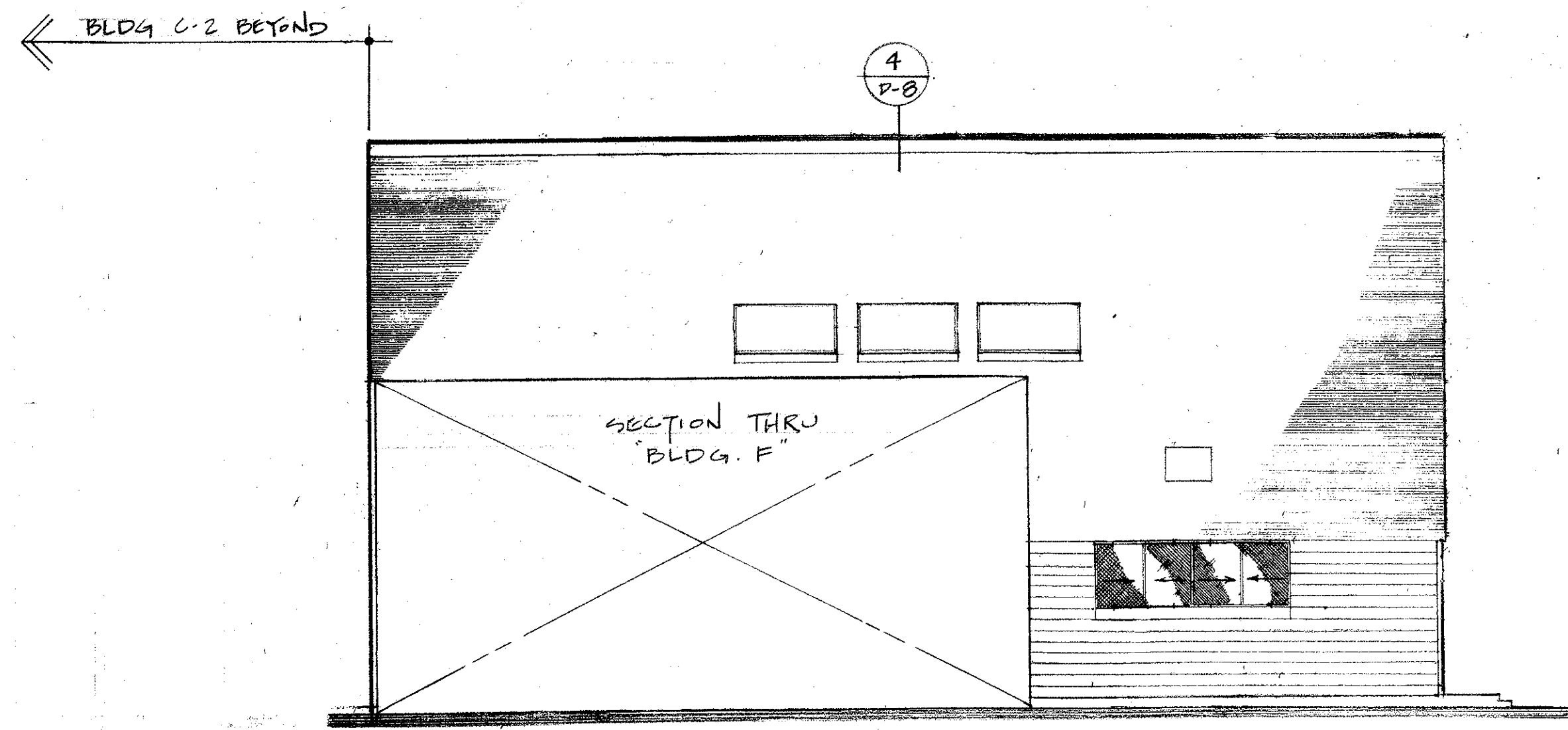
CLIENT
 NEW ORLEANS PARISH
 SCHOOL BOARD
 4300 ALMONASTER AVE
 NEW ORLEANS, LA

PROJECT
 CARTER G. WOODSON JUN. HIGH SCHOOL
 RE-ROOFING & MECHANICAL REPAIRS

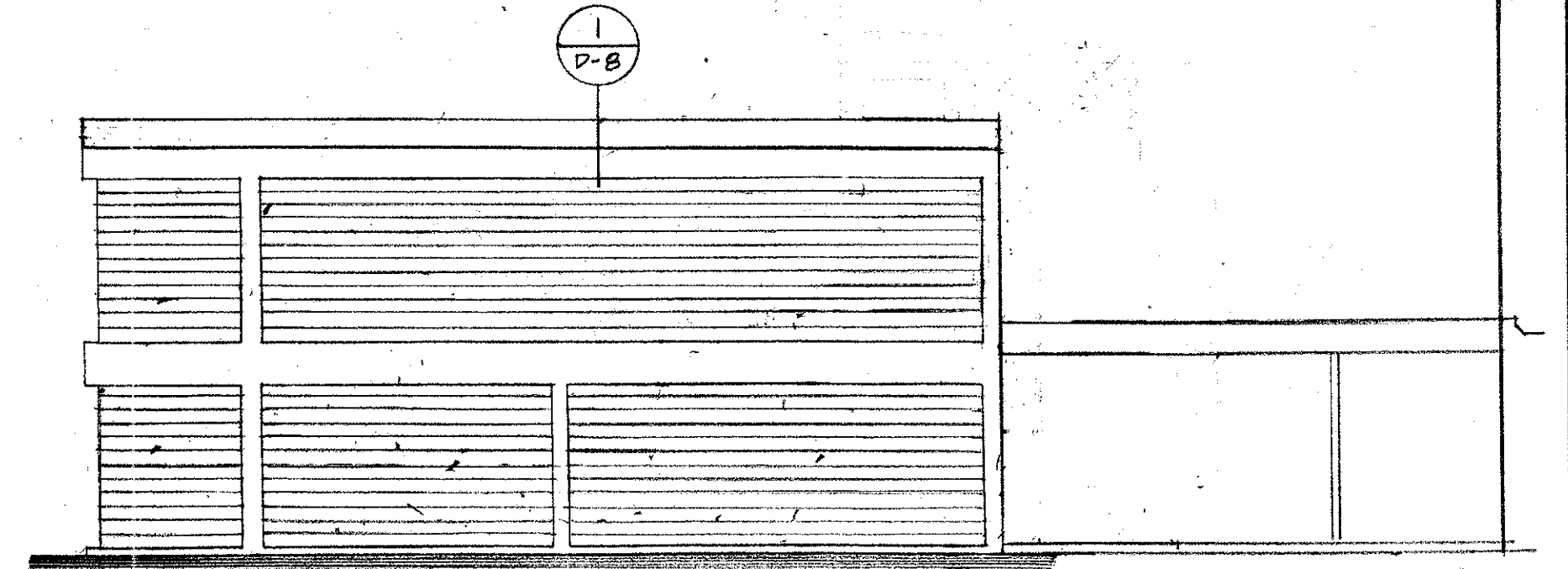
JOB NUMBER: 4602
 DATE: 4-21-97
 DRAWN BY:
 CHECKED BY: B.J.S.

REVISIONS		
NO.	DATE	REVISION

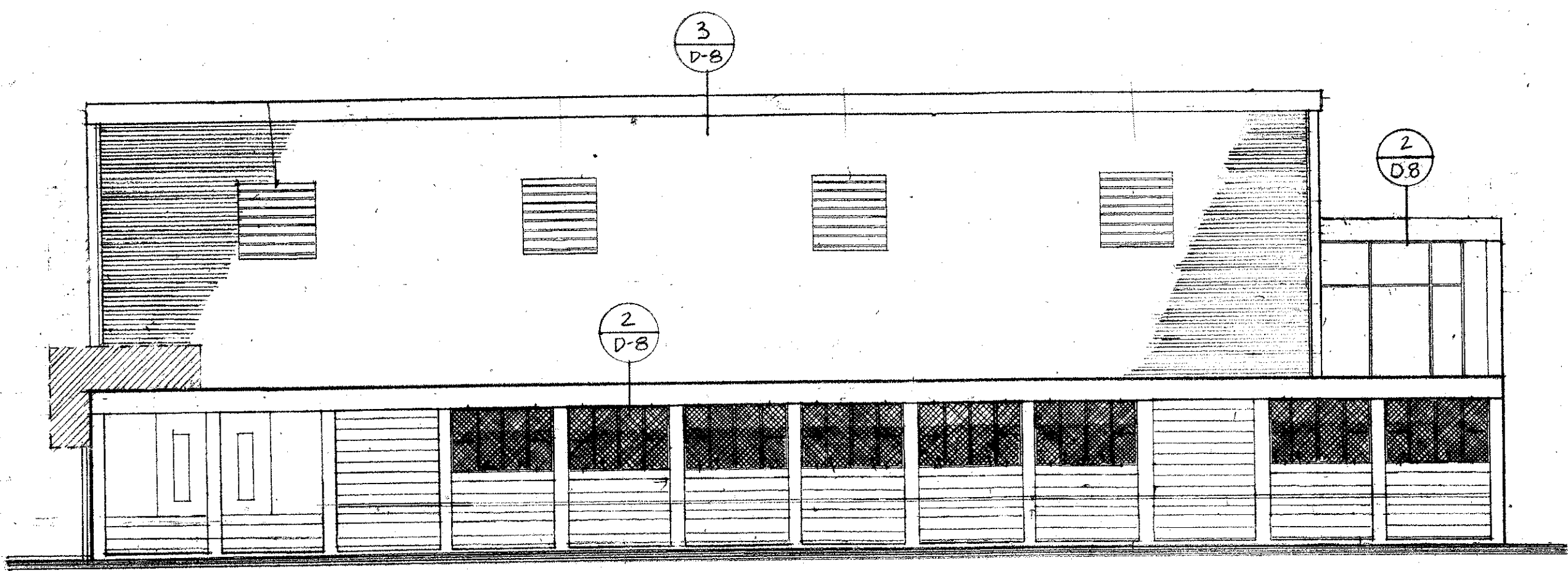
SHEET
D-6
 OF SHEETS



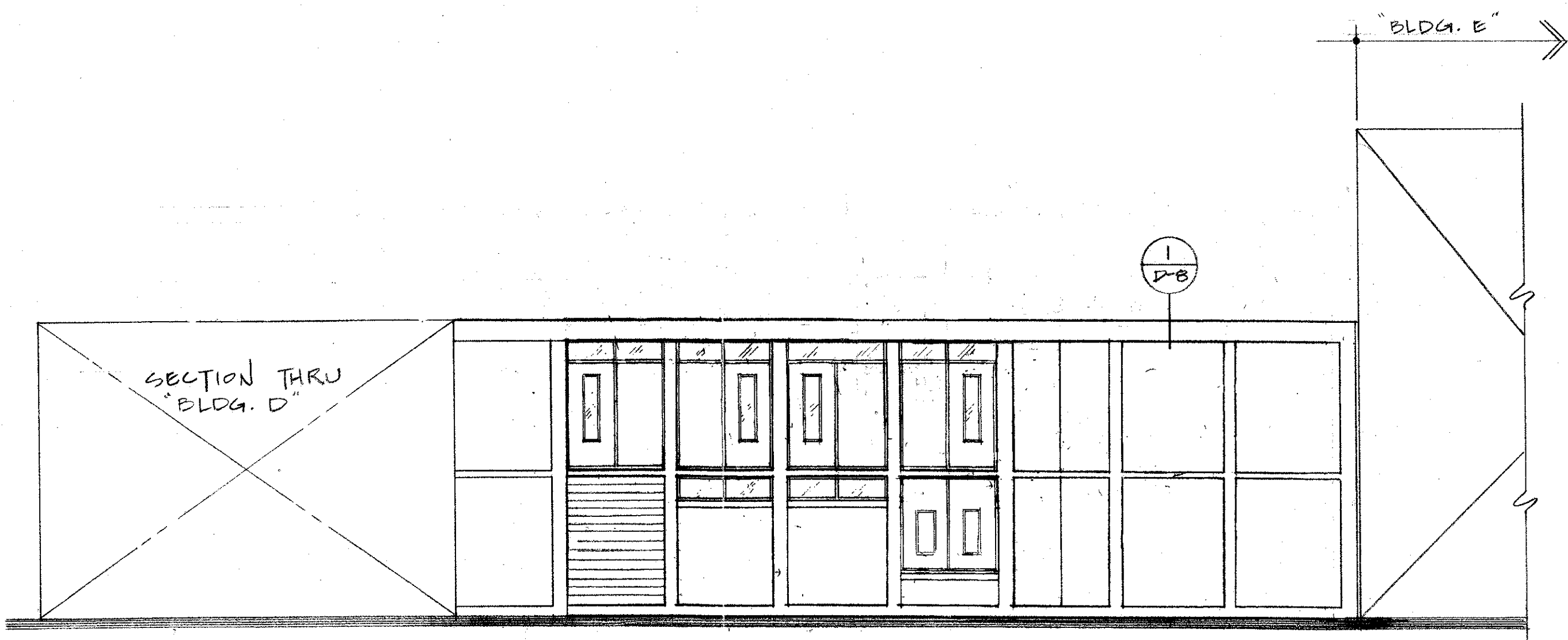
18 SECTION / ELEVATION "BLDG. E" WASHINGTON AVE.
 D-1|D-6 1/8" = 1'-0"



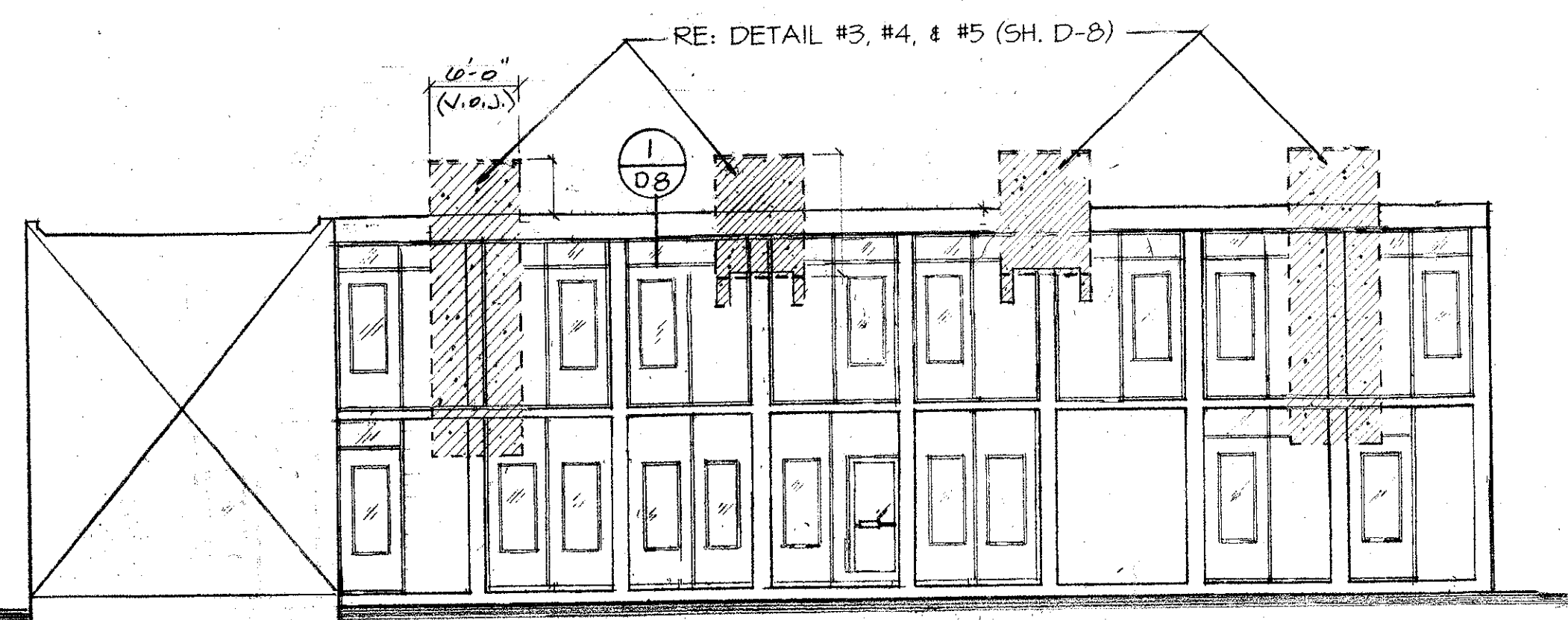
19 ELEVATION "BLDG. D" WASHINGTON AVE
 D-1|D-6 1/8" = 1'-0"



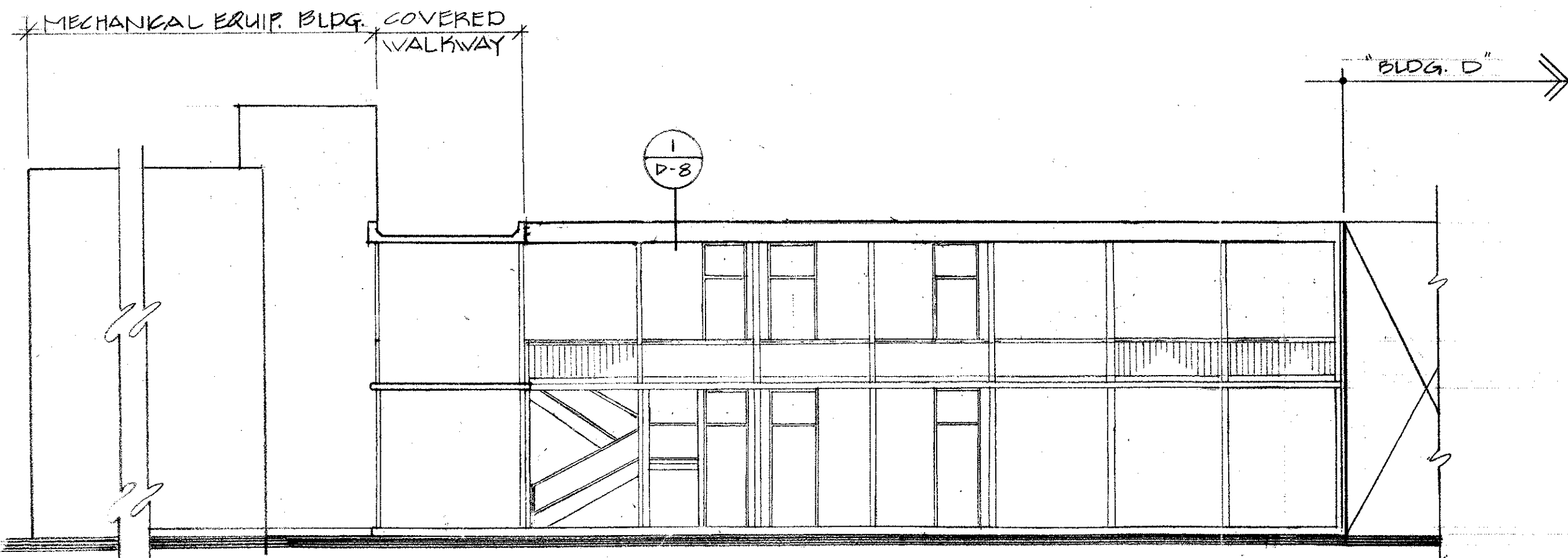
16 ELEVATION "BLDG. F" WASHINGTON AVE
 D-1|D-6 1/8" = 1'-0"



17 SECTION / ELEVATION "BLDG. C2" WASHINGTON AVE
 D-1|D-6 1/8" = 1'-0"



14 SECTION / ELEVATION "BLDG. C1" WASHINGTON AVE.
 D-1|D-6 1/8" = 1'-0"



15 SECTION / ELEVATION AT COVERED WALKWAY - WASHINGTON AVE.
 D-1|D-6 1/8" = 1'-0" (NOTE ELEVATION 15-A SIMILAR EXCEPT OPPOSITE HAND LESS)