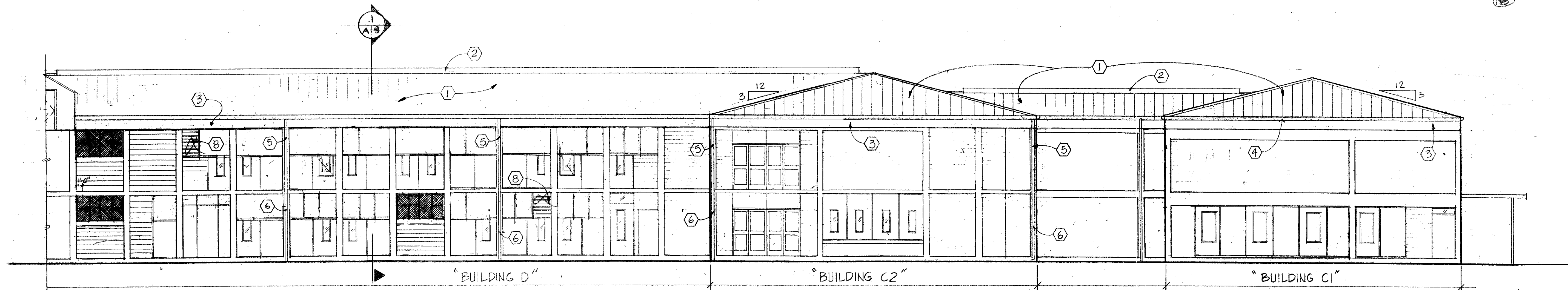
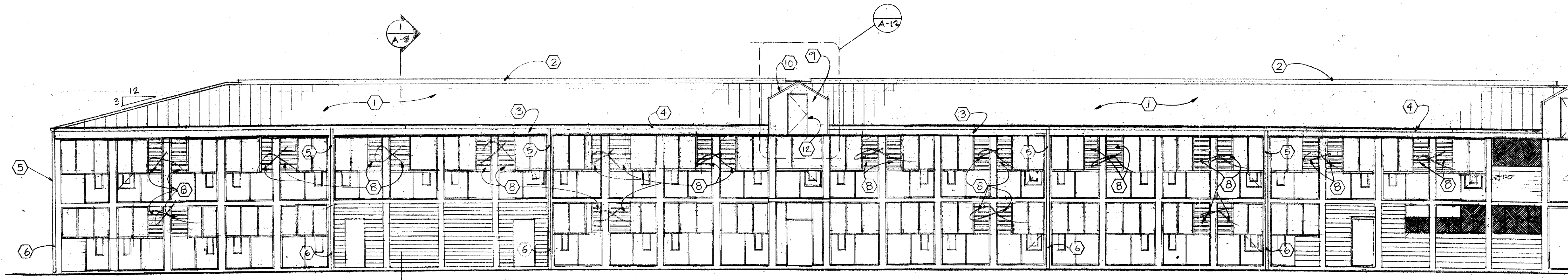


13 ELEVATION "BLDG D"
A-5 1/8" = 1'-0"

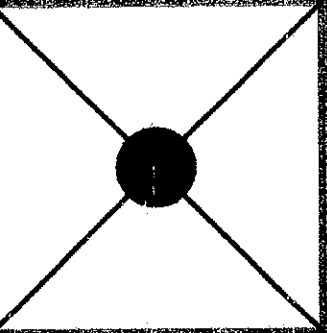


12 ELEVATION "BLDG C"
A-5 1/8" = 1'-0"



11 ELEVATION "BLDG D"
A-5 1/8" = 1'-0"

SHOW KEYNOTES



CONSULTANT
BYRON J. STEWART & ASSOC.
ARCHITECTS & PLANNERS
2300 MARENCO ST.
NEW ORLEANS, LA. 70115
(504) 897-5339

CLIENT
NEW ORLEANS PARISH
SCHOOL BOARD
4300 ALMONASTER AVE.
NEW ORLEANS, LA.

PROJECT
CARTER G. WOODSON JUN. HIGH SCHOOL
RE-ROOFING & MECHANICAL REPAIRS
F.D.P. # 92034

JOB NUMBER: 9602
DATE: 4-21-97
DRAWN BY:
CHECKED BY: B.J.S.

REVISIONS		
NO.	DATE	REVISION

SHEET
A-5
OF SHEETS