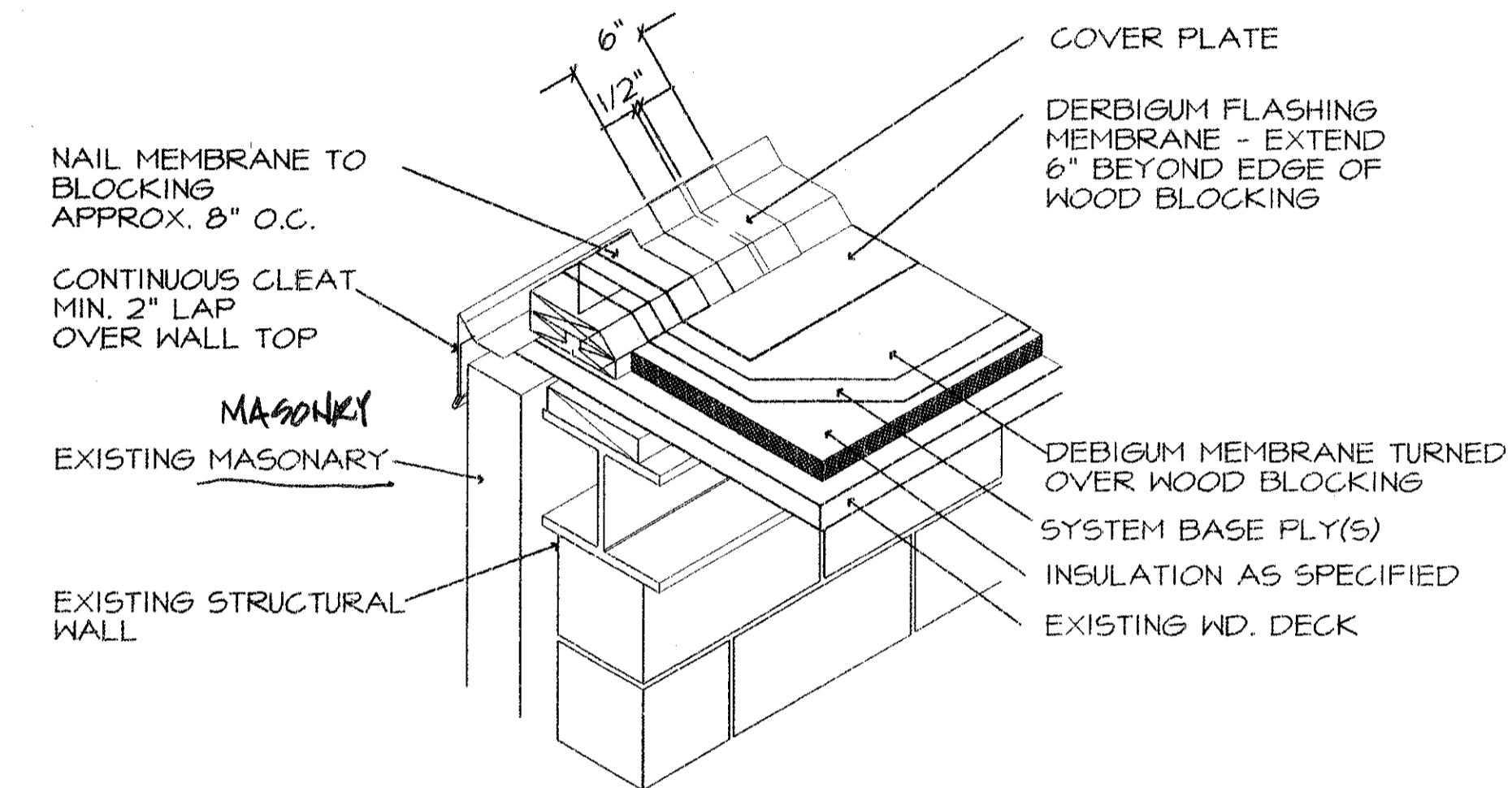
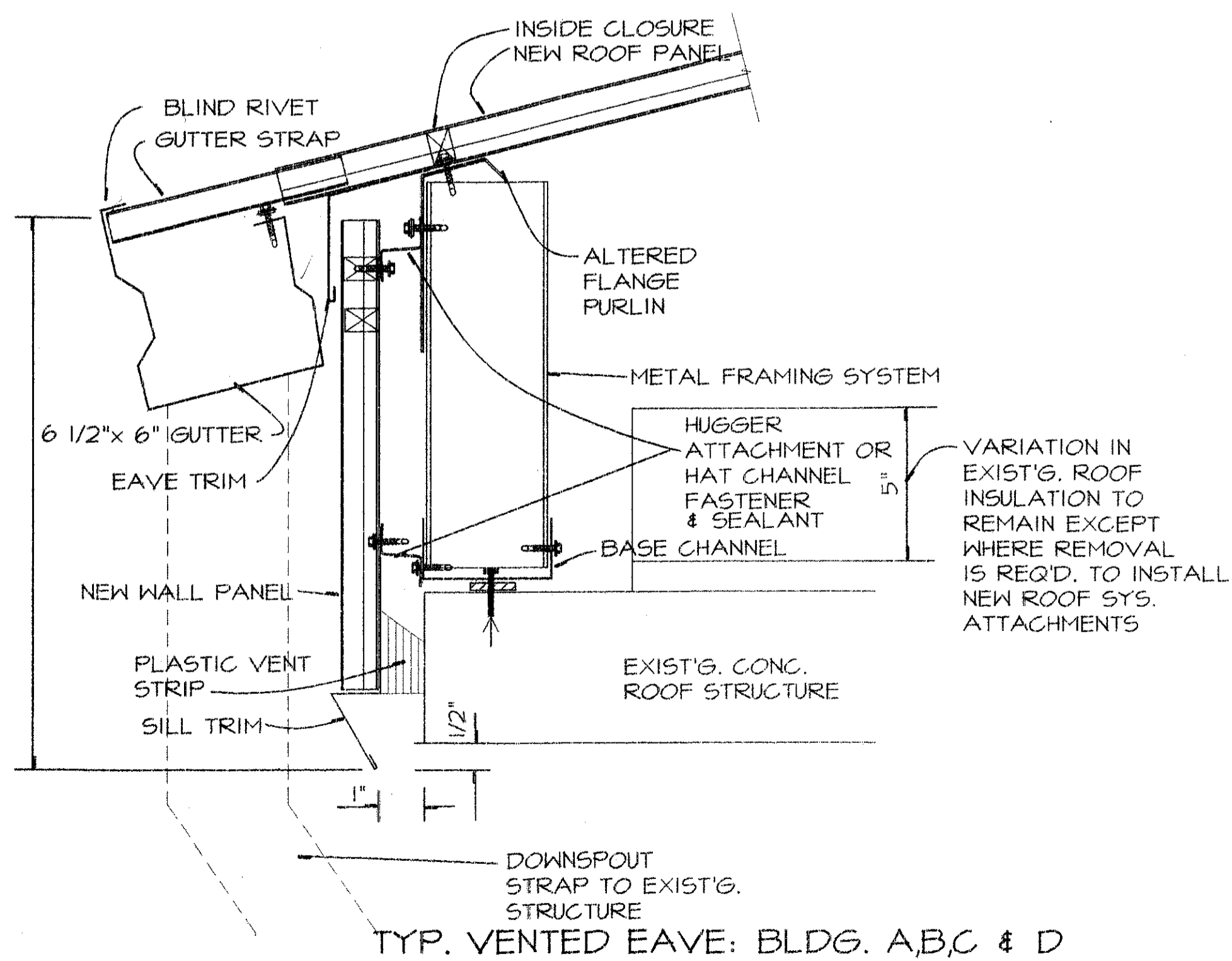


7 MODIFIED BITUMINOUS ROOFING  
-A-10 N.T.S. TYP. @ FLAT ROOF AREAS

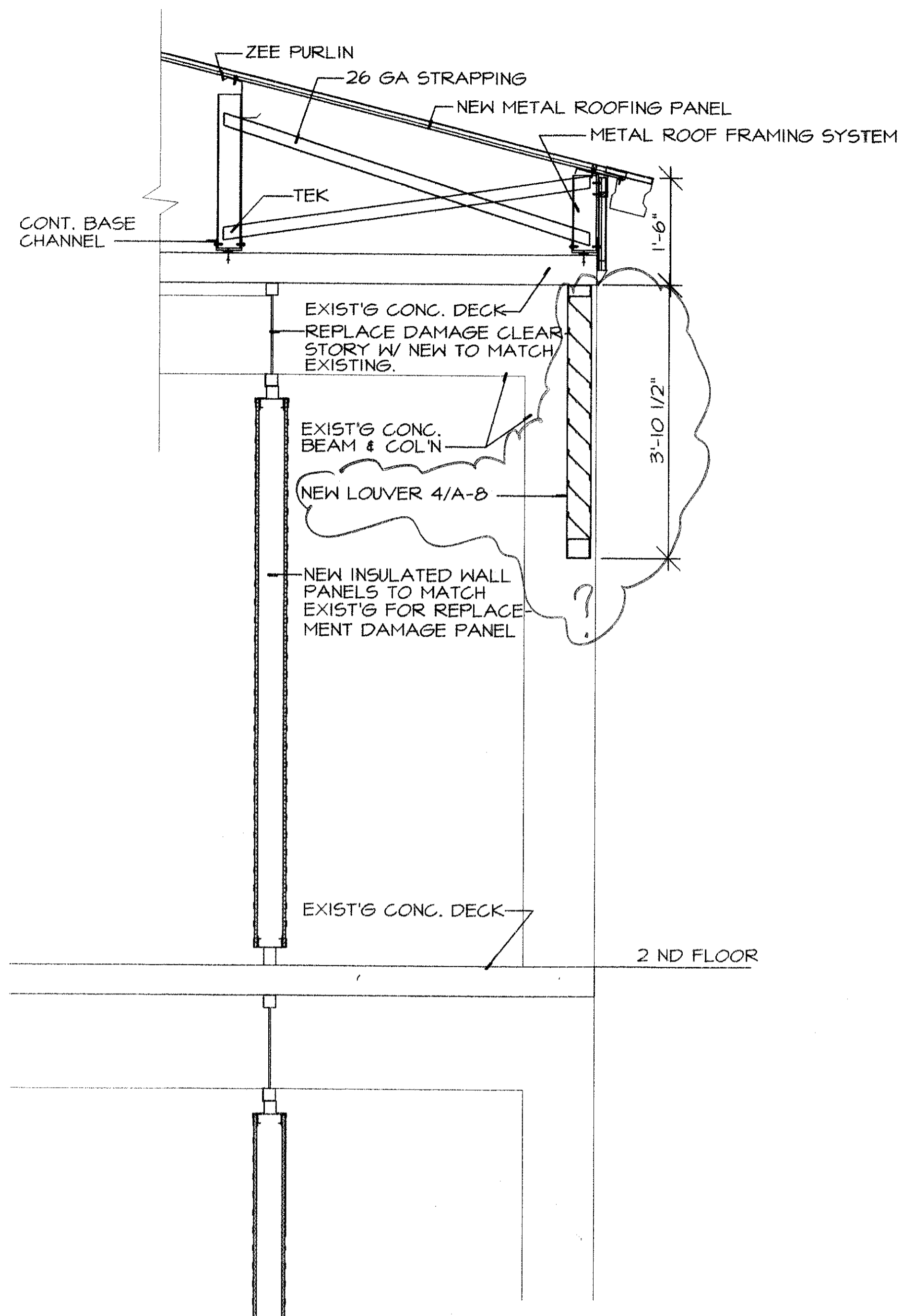


NOTE: SECURE ROOF EDGE WITH FASTENERS AT SECTION CENTER AND COVER PLATES, ELASTOMERIC SEALANT AT ALL FASTENERS.

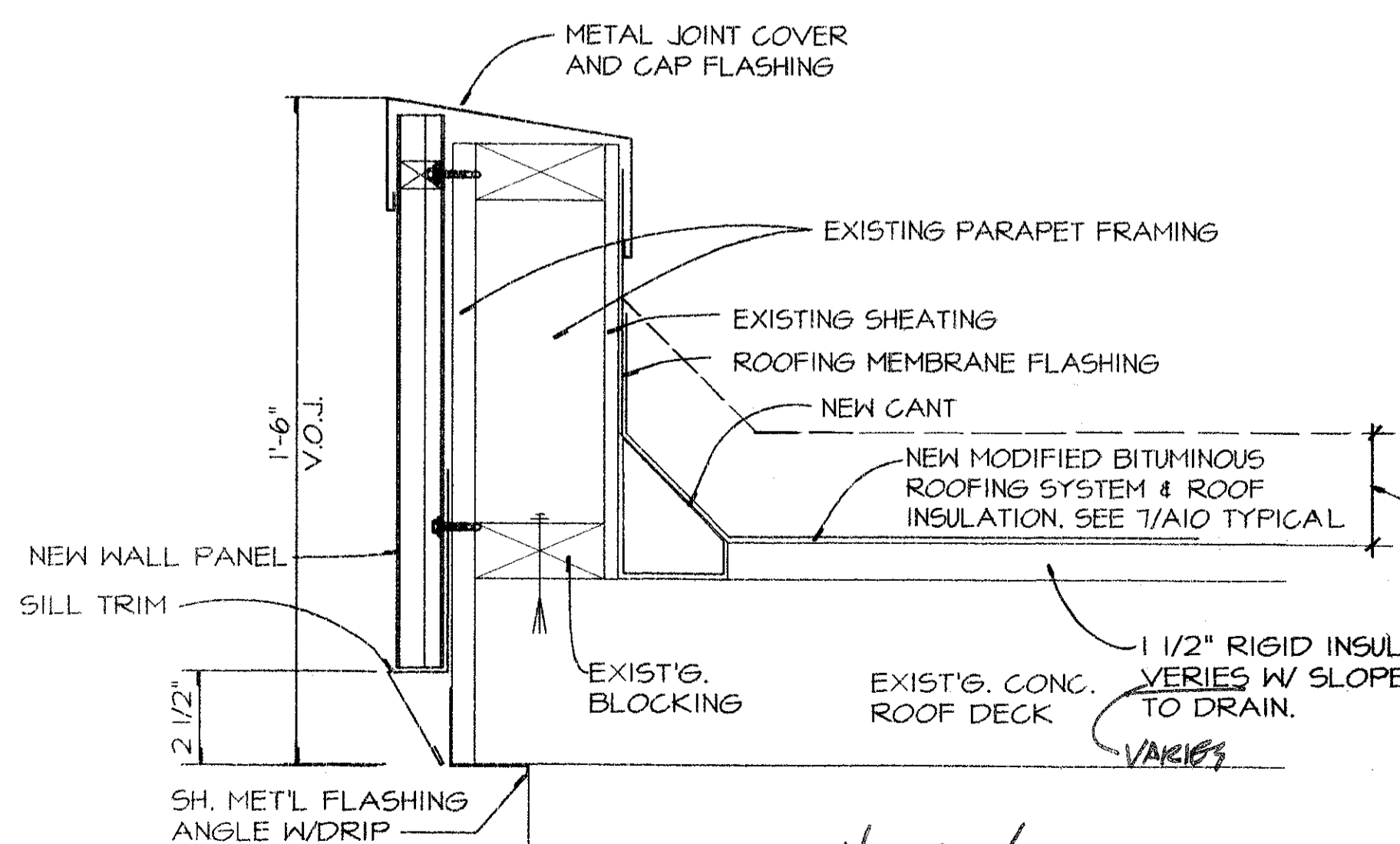
4 ROOF EAVE SECTION  
-A-10 N.T.S. TYP. BLDG. "E"



1 ROOF VENTED EAVE SECTION  
-A-10 3" = 1'-0" (TYP. BLDG. A1, A2, B1, B2, C1, C2, & D)



5 DETAIL SECTION  
-A-10 3/4" = 1'-0"

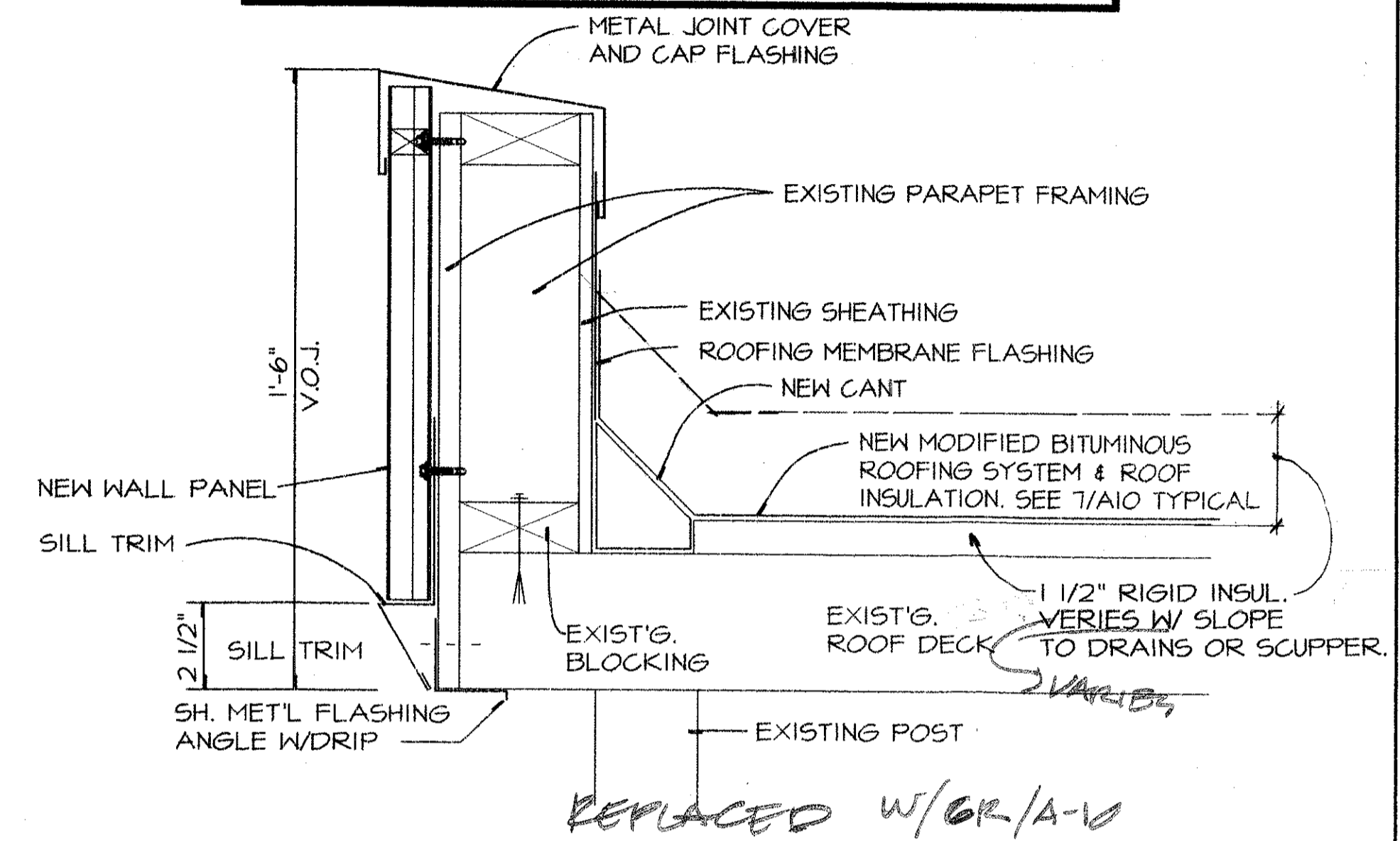


2 NEW ROOF & FASICA DETAIL  
-A-10 3" = 1'-0" BLDG. "F" FLAT ROOF AREAS.

NOTE : ALL ROOF SYSTEM ANCHORS TO EXIST'G. DECK MATERIALS MUST BE SUBMITTED FOR APPROVAL IN SAMPLE FORM, ACTUAL STYLE, WITH SUPPORTING ALLOY INFORMATION AND PULL-OUT DATA FOR EACH ANCHOR TYPE FOR EACH EXIST'G. DECK MATERIAL TO RECEIVE SUCH ANCHORS.

CONTRACTOR SHALL EXPOSE ALL EXIST'G. DECK AREAS TO RECEIVE ROOF SYSTEM ANCHORS FOR INSPECTION OF DECK CONDITION BY THE ARCHITECT.

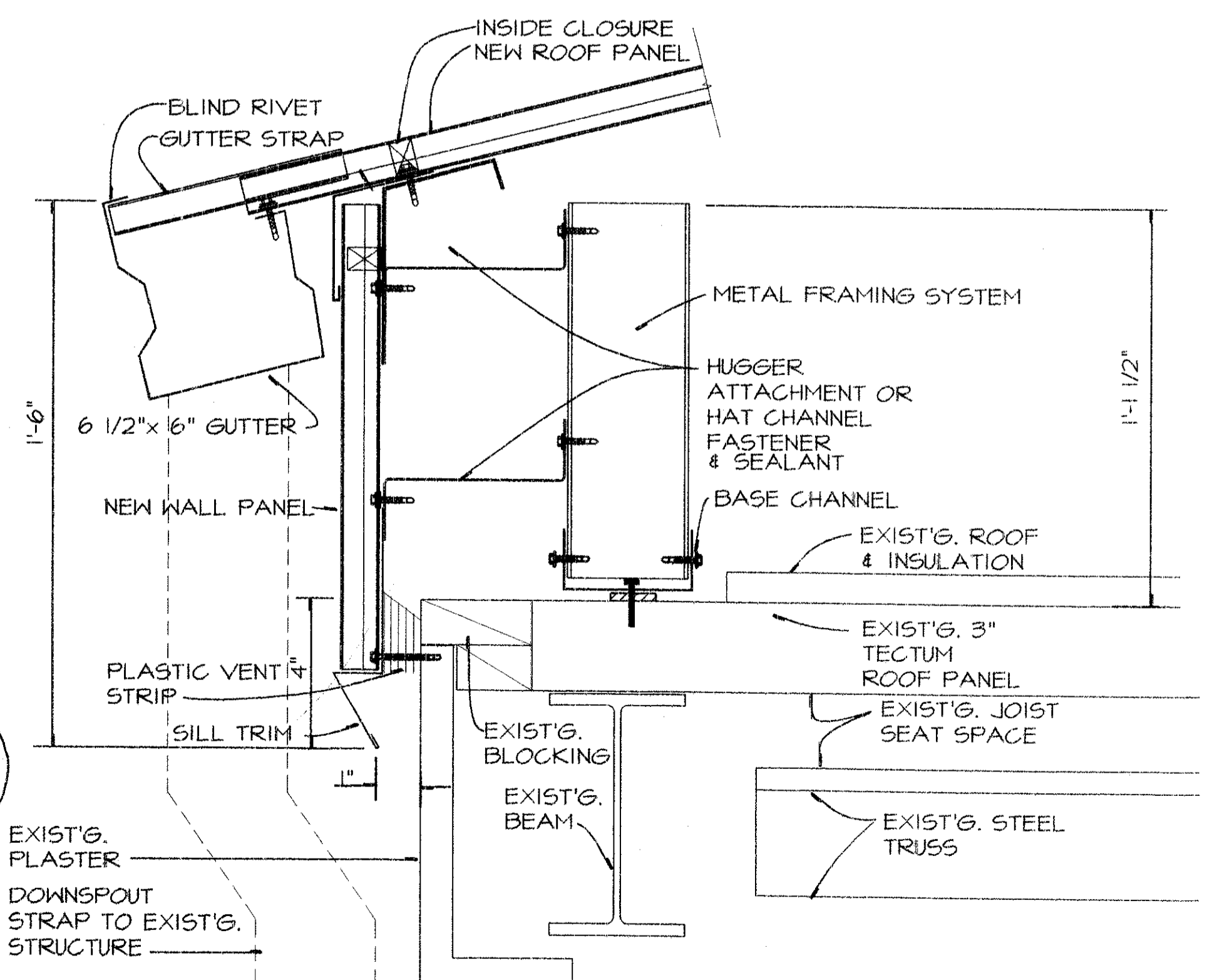
CONTRACTOR MUST SUBMIT DESIGN CALCULATION, INCLUDING POST REACTIONS ON PROPOSED ROOF SYSTEM TO DESIGNER FOR REVIEW AND APPROVAL PRIOR TO FABRICATION. THIS IS NECESSARY TO VERIFY ADEQUACY OF ATTACHMENT DETAILS.



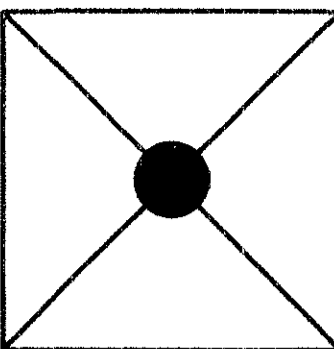
6 ROOF EAVE SECTION  
-A-10 3" = 1'-0" FOR COVERED WALKWAYS

\* MODIFIED BITUMINOUS ROOFING & INSULATION DETAILS DRAWN AS PER PERFORMANCE ROOF SYSTEMS OR EQUAL.

\* METAL ROOFING DETAILS DRAWN AS PER UNITED STRUCTURES OF AMERICA RETRO ROOF SYSTEM OR EQUAL.



3 ROOF EAVE SECTION  
-A-10 3" = 1'-0" TYP. BLDG. "F"



CONSULTANT  
BYRON J. STEWART & ASSOC.  
ARCHITECTS & PLANNERS  
2300 MARENGO ST.  
NEW ORLEANS, LA 70115  
(504) 897-5339

CLIENT  
NEW ORLEANS PARISH  
SCHOOL BOARD  
4300 ALMONASTER AVE  
NEW ORLEANS, LA

PROJECT  
CARTER G. WOODSON JUN. HIGH SCHOOL  
RE-ROOFING AND MECH. REPAIRS  
F.D.P. # 92034

JOB NUMBER: 9602  
DATE: 4-21-97  
DRAWN BY: M.A.  
CHECKED BY: B.J.S.

REVISIONS		
NO.	DATE	REVISION

SHEET  
A-10  
OF SHEETS