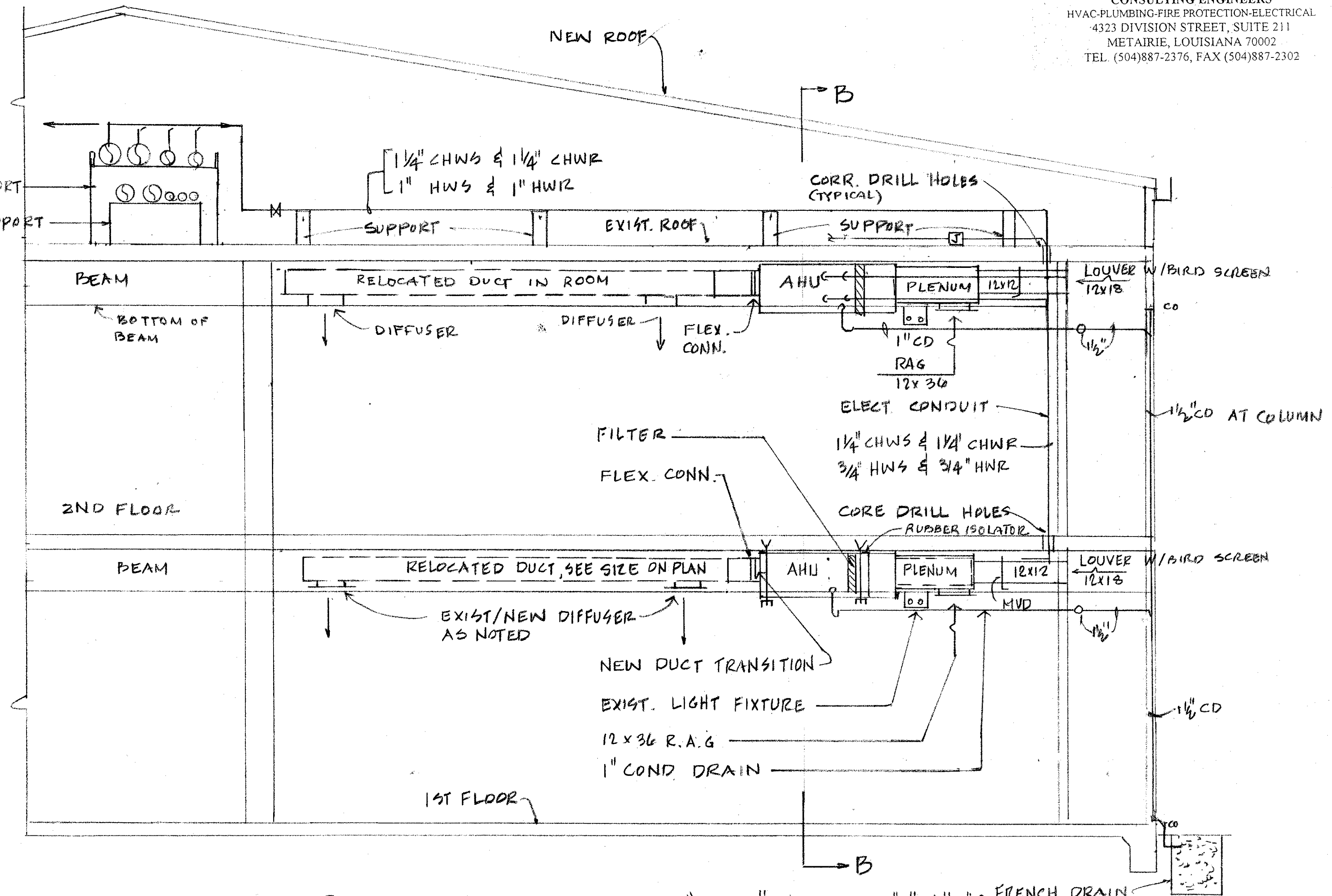
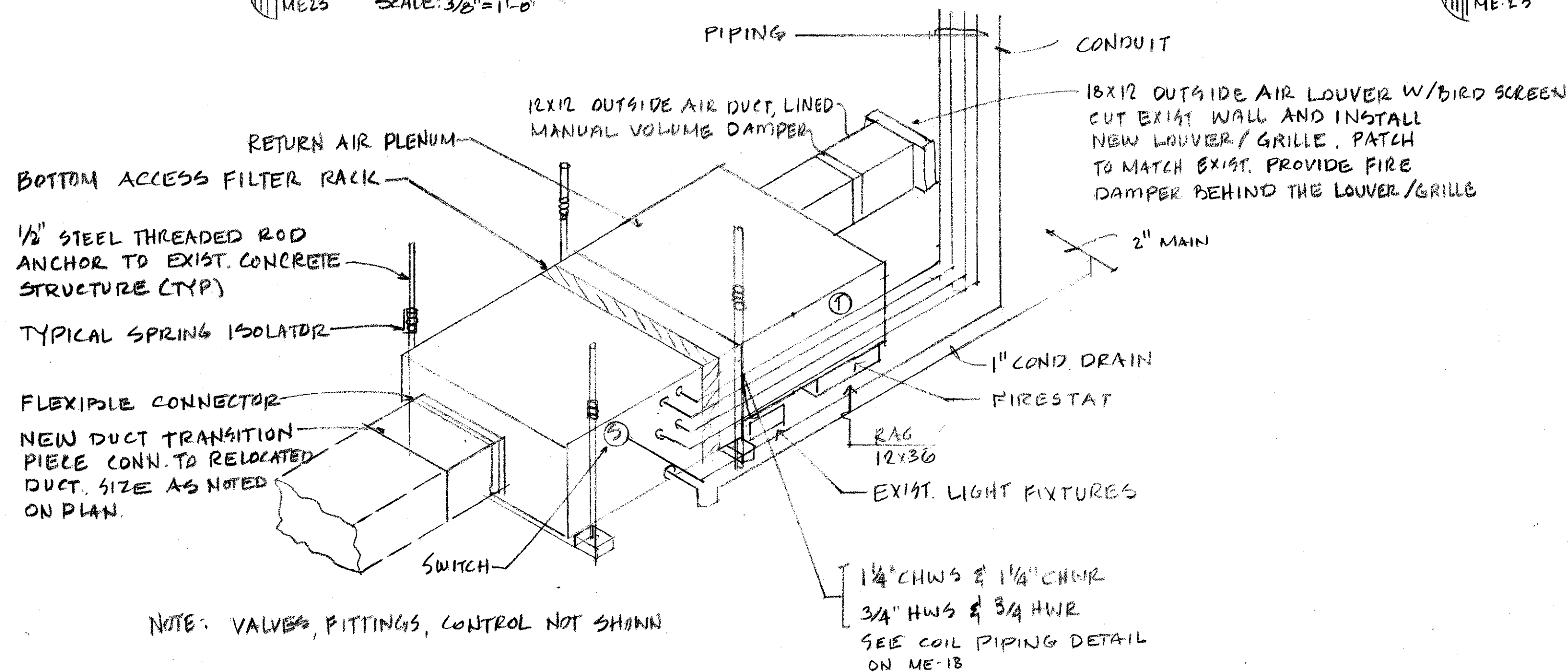


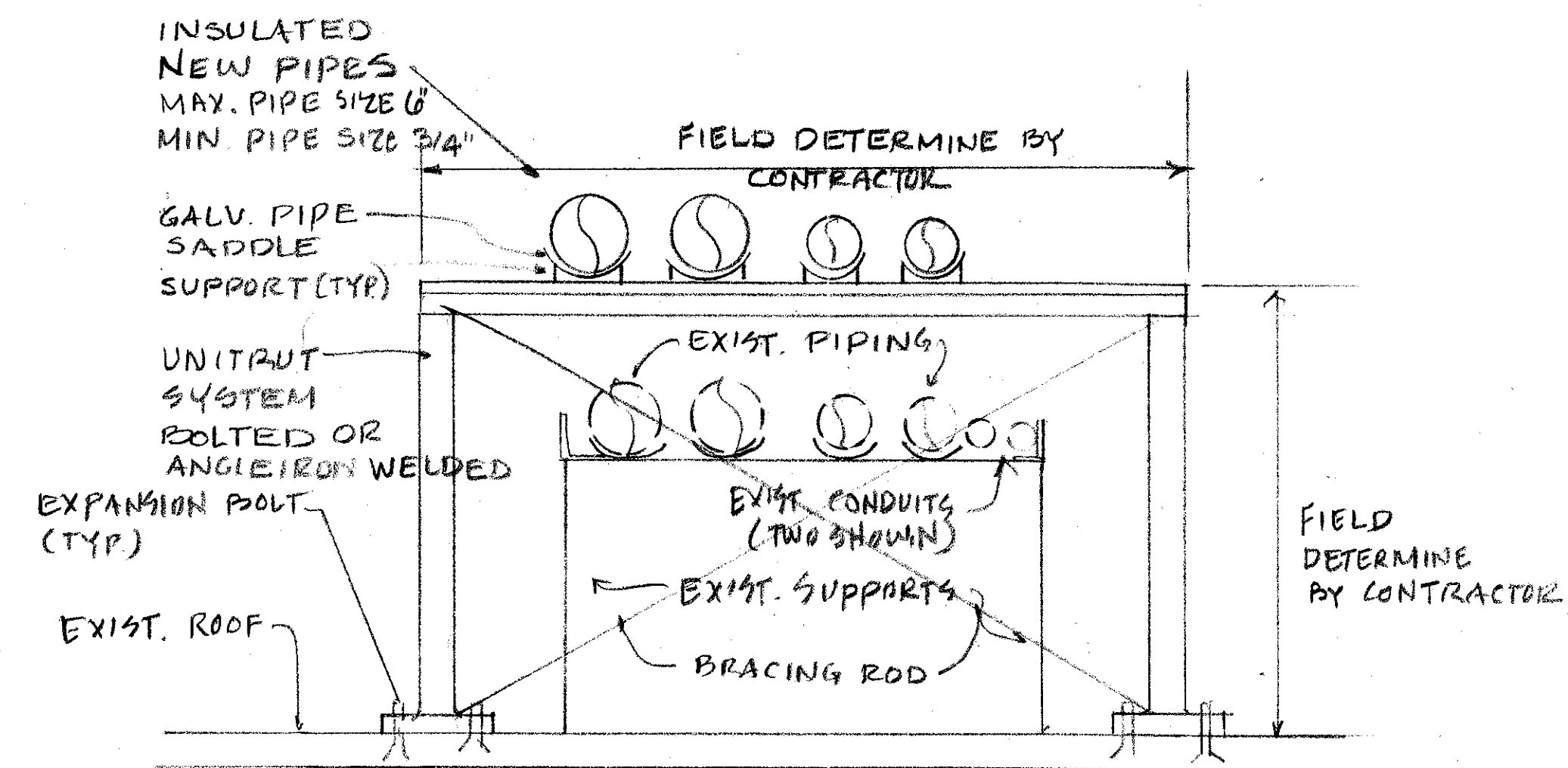
**B SECTION**  
 ME-13 SCALE: 3/8"=1'-0"



**A TYPICAL SECTION THRU "AHU" (BLDG'S "A" & "B")**  
 ME-13 SCALE 3/8"=1'-0"  
 (BUILDING C, D, E AND F SIMILAR)

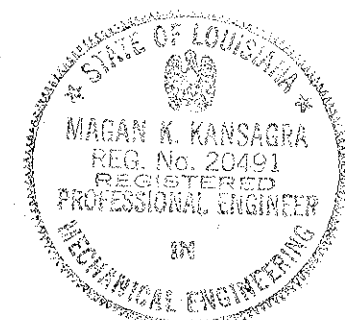


**C TYPICAL "AHU" INSTALLATION DETAIL**  
 ME-13 N.T.S.



**D TYPICAL PIPES SUPPORTS ON ROOF**  
 ME-13 N.T.S.

NOTE: CONTRACTOR MUST SUBMIT PIPE SUPPORT SHOP DRAWINGS PRIOR TO FABRICATE FOR APPROVAL



REVISIONS	BY

CONSULTANT  
 BYRON J. STEWART & ASSOC.  
 ARCHITECTS & PLANNERS  
 2300 MARENGO ST.  
 NEW ORLEANS, LA 70115  
 (504) 897-5339

CLIENT  
 NEW ORLEANS PARISH  
 SCHOOL BOARD  
 4300 ALMONDMASTER AVE  
 NEW ORLEANS, LA

PROJECT  
 CARTER G. WOODSON MIDDLE SCHOOL  
 RE-ROOFING & MECHANICAL REPAIRS

DRAWN	KK
CHECKED	MK
DATE	4-21-97
SCALE	AS NOTED
JOB NO.	

SHEET  
**ME-21**  
 OF 22 SHEETS