

DAMMON
ENGINEERING, INC.

CHIEF ENGINEER
EMMETT
DAMMON, P.E.

CHIEF ARCHITECT
ROBERT
WILTSE

1095 FLORIDA AVENUE
SLIDELL, LA. 70458
OFFICE: 985-649-5832
FAX: 985-641-5950

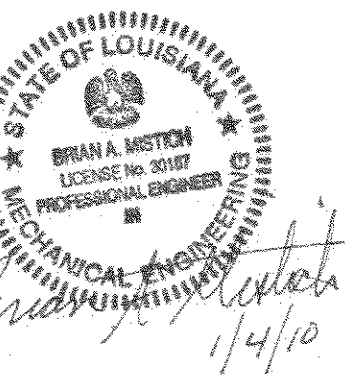
WEBSITE:
WWW.DAMMONENGINEERING.COM

EMAIL:
DAMMONENG@BELLSOUTH.NET

ARCHITECTURE
ENGINEERING
STUDIES
PLANNING
INVESTIGATION
EXPERT WITNESS

PAUL MITCHELL
SCHOOL
3321 HESSMER AVE
METAIRIE, LA
70002

FIRST FLOOR
MECHANICAL PLAN



REV:

SCALE: AS NOTED

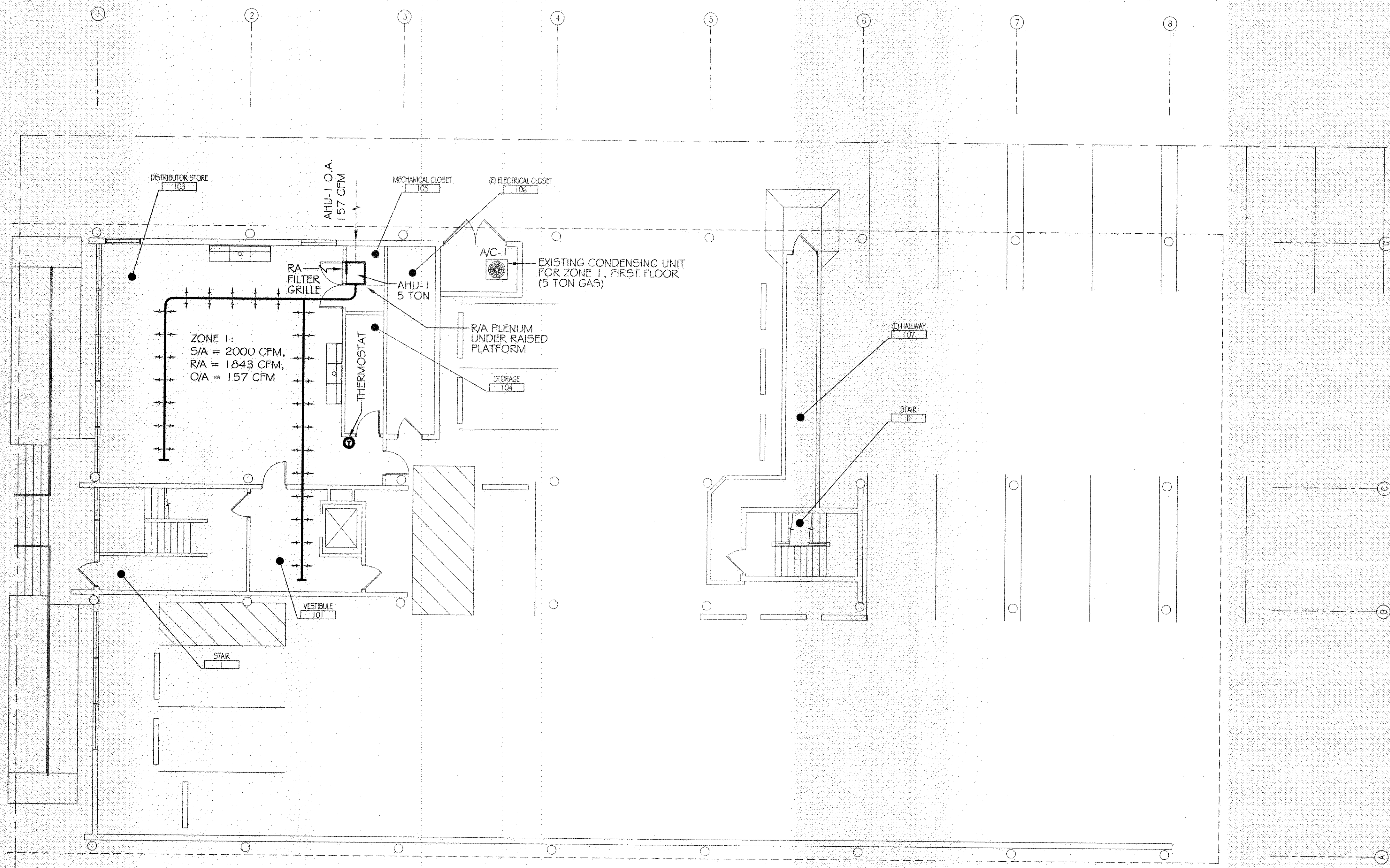
JOB#: 2051

DATE: 01-04-10

SHEET

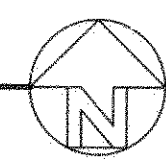
M-1

OF



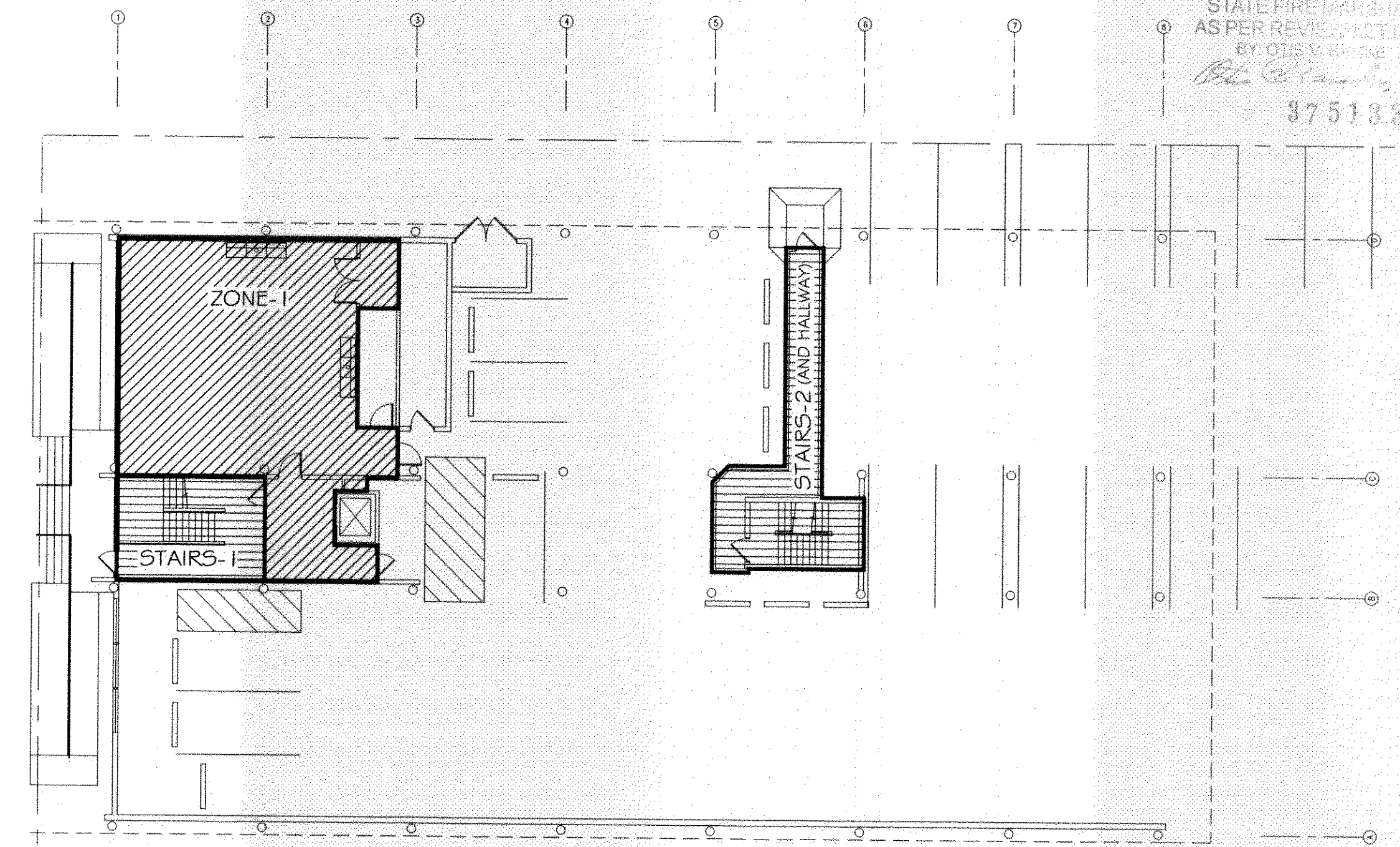
FIRST FLOOR MECHANICAL PLAN

SCALE: 1/8"=1'



REVIEWED FOR
STATE FIRE MARSHAL
AS PER REVIEW LETTER
BY: OIS V. BROWN
Brian Mitchell
375133

- LEGEND**
- SUPPLY AIR (S/A) DUCT
 - PERFORATED CIRCULAR SUPPLY AIR DUCT
 - RETURN AIR (R/A) GRILLE, WALL MOUNTED BELOW HVAC CLOSET DOOR
 - OUTSIDE AIR SUPPLY (O.A.)
 - THERMOSTAT



KEY PLAN
NTS