

DAMMON ENGINEERING, INC.

CHIEF ENGINEER
EMMETT DAMMON, P.E.

CHIEF ARCHITECT
ROBERT WILTSE

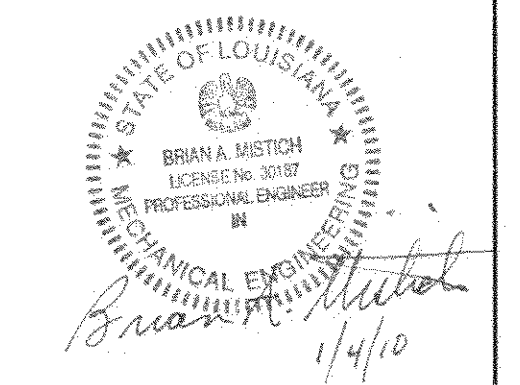
1095 FLORIDA AVENUE
SLIDELL, LA. 70458
OFFICE: 985-649-5832
FAX: 985-641-5950

WEBSITE:
WWW.DAMMONENGINEERING.COM
EMAIL:
DAMMONENG@BELLSOUTH.NET

ARCHITECTURE
ENGINEERING
STUDIES
PLANNING
INVESTIGATION
EXPERT WITNESS

PAUL MITCHELL
SCHOOL
3321 HESSMER AVE.
METAIRIE, LA
70002

SECOND FLOOR
MECHANICAL
PLAN



REV:

SCALE: AS NOTED

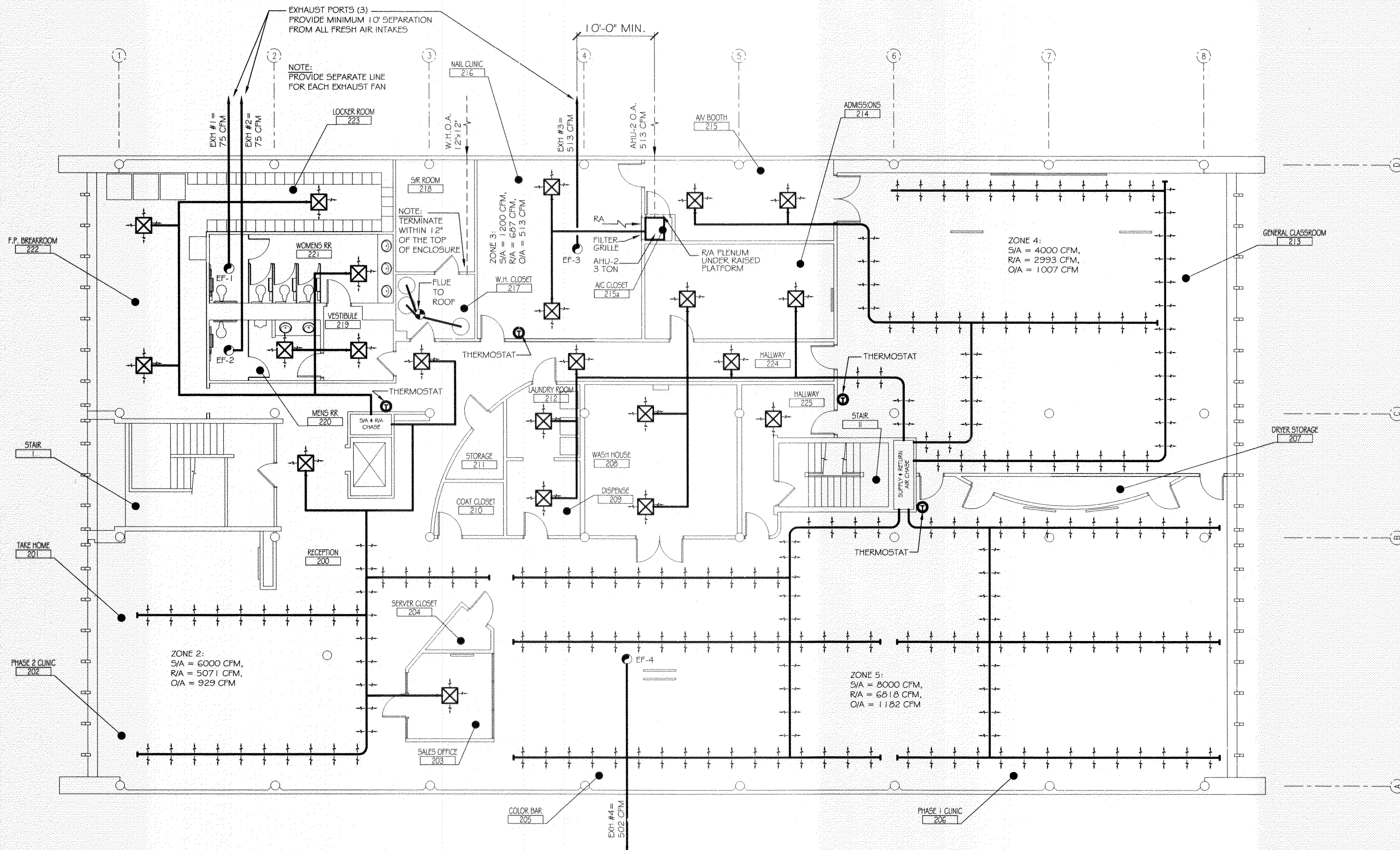
JOB#: 2051

DATE: 01-04-10

SHEET

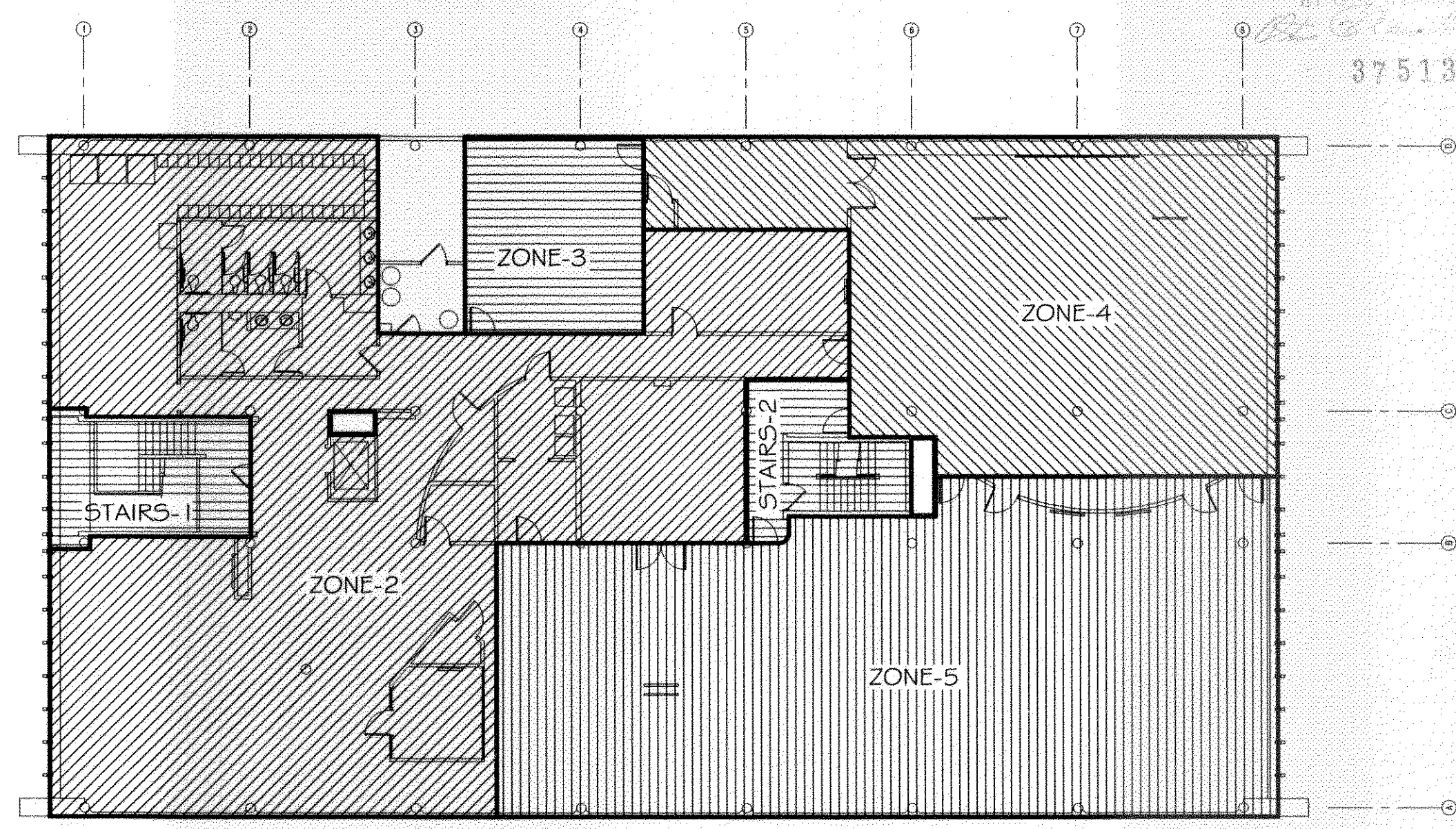
M-2

OF



SECOND FLOOR MECHANICAL PLAN
SCALE: 1/8"=1'

- LEGEND**
- SUPPLY AIR GRILLE
 - SUPPLY AIR DUCT
 - PERFORATED CIRCULAR SUPPLY AIR DUCT
 - OUTSIDE AIR SUPPLY
 - THERMOSTAT
 - EXHAUST FAN
 - EXHAUST FLUE



KEY PLAN
NTS

REVIEWED FOR
STATE FIRE MARSHAL
AS PER REVISED LETTER
BY OES 03/08
Bl. Cloutier
375133