

DAMMON ENGINEERING, INC.

CHIEF ENGINEER
EMMETT DAMMON, P.E.

CHIEF ARCHITECT
ROBERT WILTSE

1095 FLORIDA AVENUE
SLIDELL, LA. 70458
OFFICE: 985-649-5832
FAX: 985-641-5950

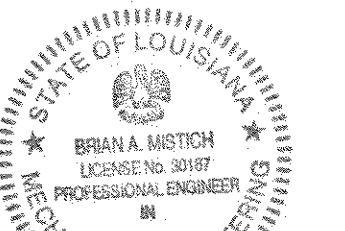
WEBSITE:
WWW.DAMMONENGINEERING.COM

EMAIL:
DAMMONENG@BELLSOUTH.NET

ARCHITECTURE
ENGINEERING
STUDIES
PLANNING
INVESTIGATION
EXPERT WITNESS

PAUL MITCHELL
SCHOOL
3321 HESSMER AVE.
METAIRIE, LA
70002

THIRD FLOOR
MECHANICAL
PLAN



REV:

SCALE: AS NOTED

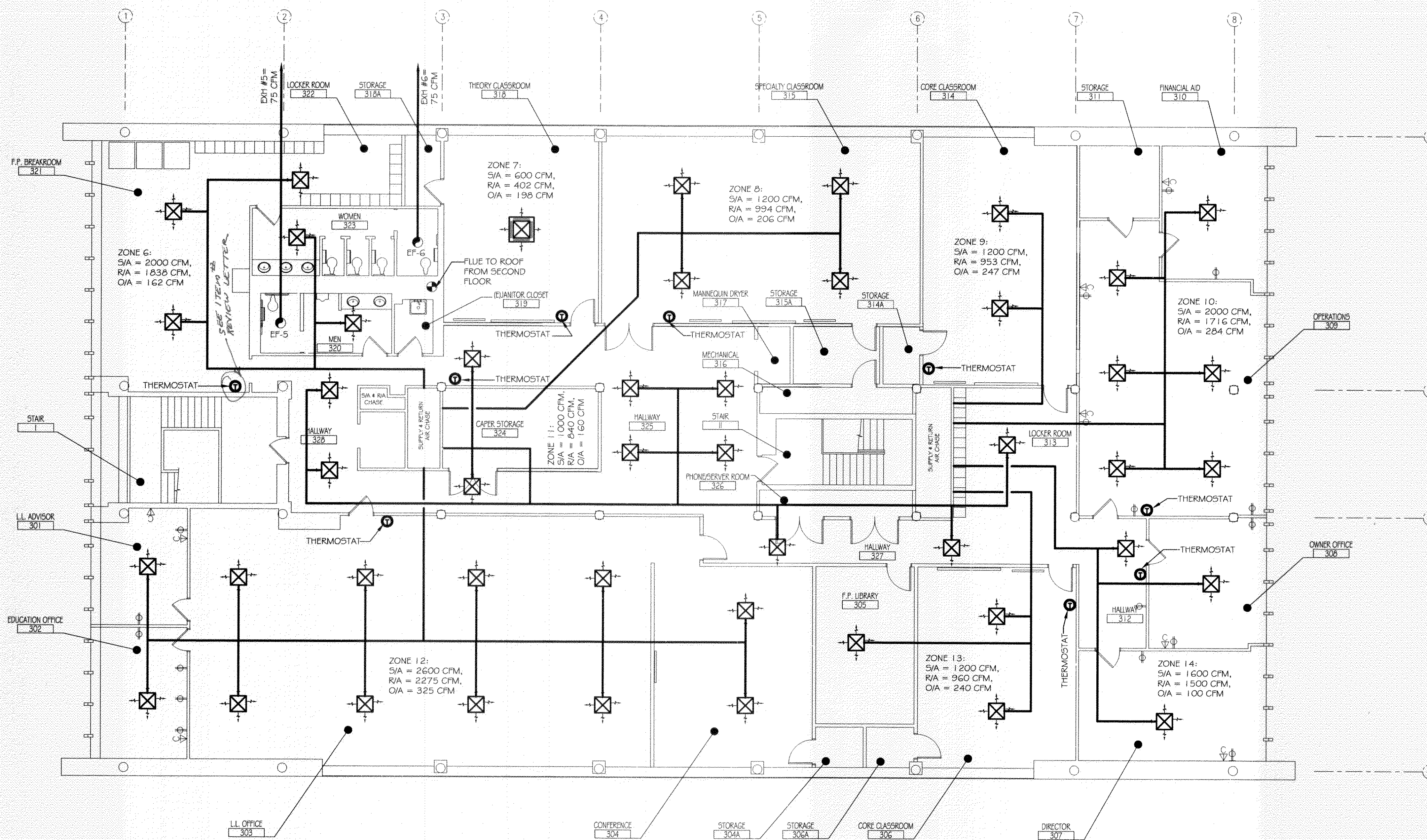
JOB#: 2051

DATE: 01-04-10

SHEET

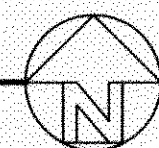
M-3

OF



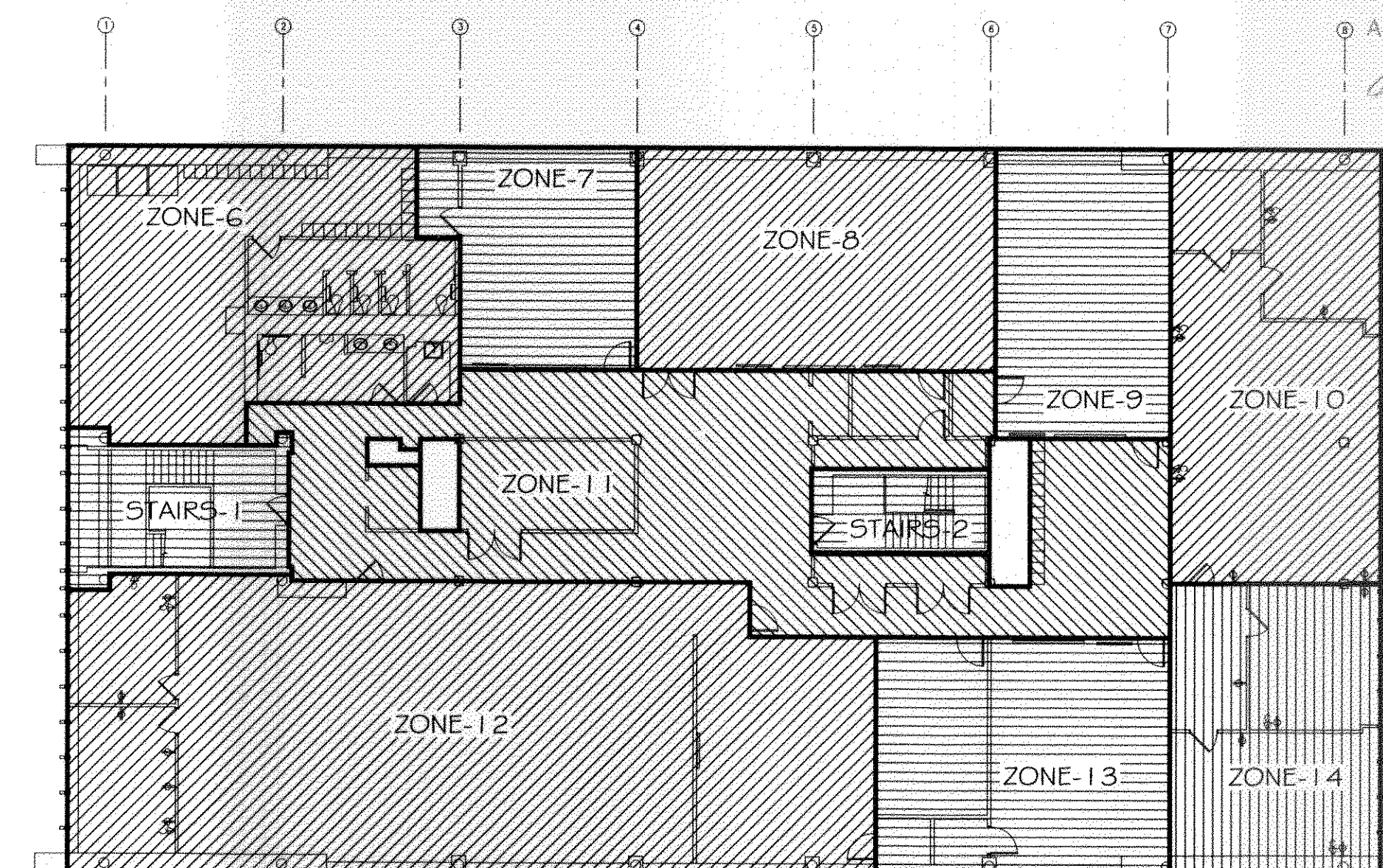
THIRD FLOOR MECHANICAL PLAN

SCALE: 1/8" = 1'



LEGEND

- SUPPLY AIR GRILLE
- SUPPLY AIR DUCT
- OUTSIDE AIR SUPPLY
- THERMOSTAT
- EXHAUST FAN
- EXHAUST FLUE



KEY PLAN

NTS

REVIEWED FOR
STATE FIRE MARSHAL
AS PER REVIEW LETTER
BY OTC
375133