

DAMMON ENGINEERING, INC.

CHIEF ENGINEER
EMMETT
DAMMON, P.E.

CHIEF ARCHITECT
ROBERT
WILTSE

1095 FLORIDA AVENUE
SLIDELL, LA. 70458
OFFICE: 985-649-5832
FAX: 985-641-5950

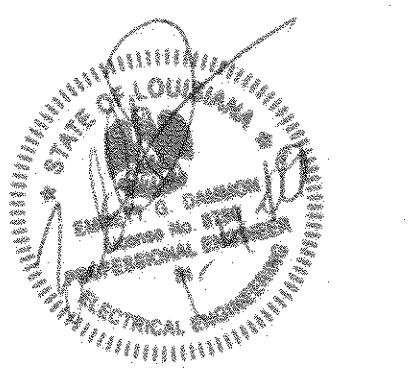
WEBSITE:
WWW.DAMMONENGINEERING.COM

EMAIL:
DAMMONENG@BELLSOUTH.NET

ARCHITECTURE
ENGINEERING
STUDIES
PLANNING
INVESTIGATION
EXPERT WITNESS

PAUL MITCHELL
SCHOOL
3321 HESSMER AVE
METAIRIE, LA
70002

FIRST FLOOR
POWER PLAN



REV:

SCALE: AS NOTED

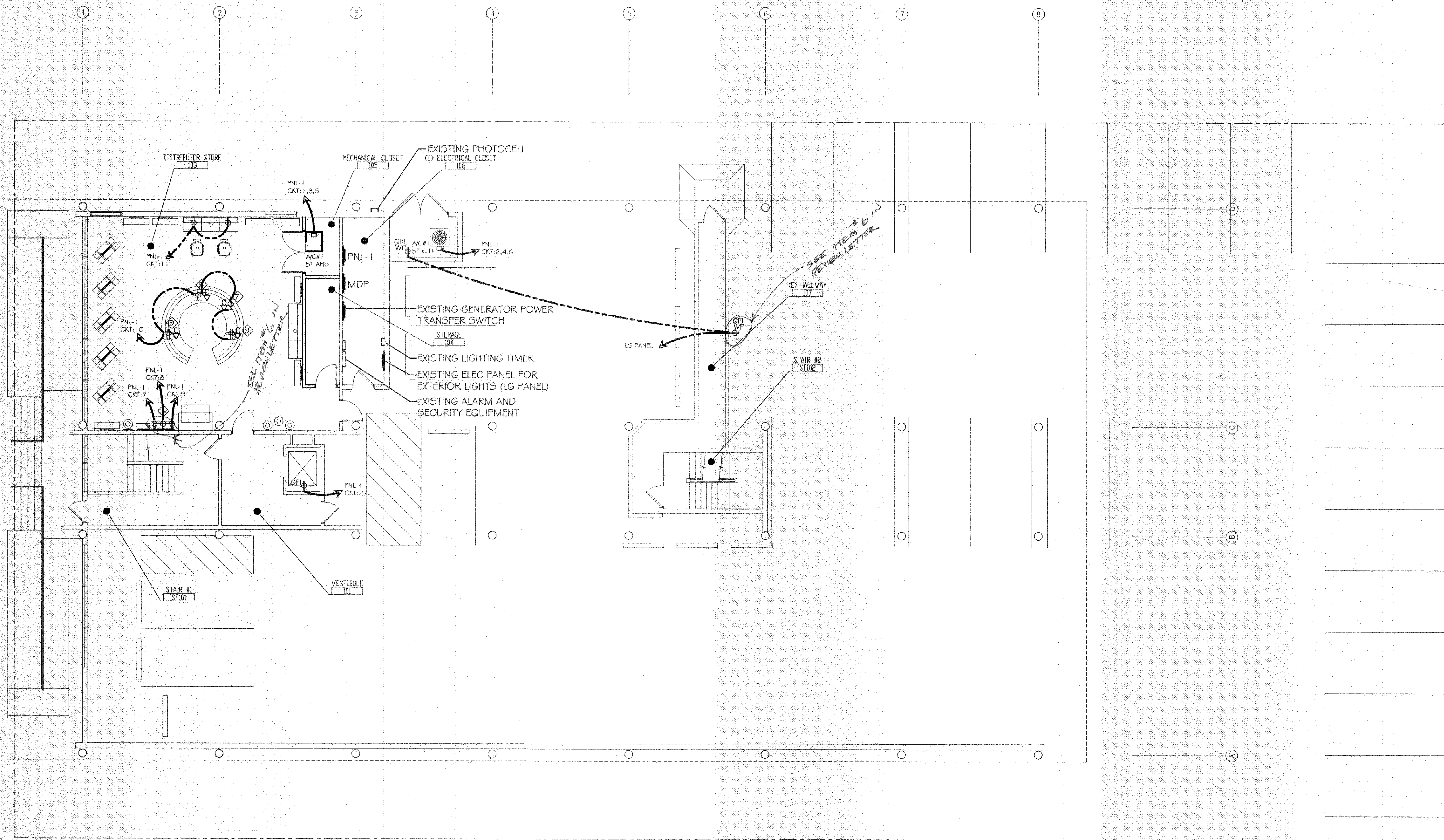
JOB#: 2051

DATE: 01-04-10

SHEET

E-1

OF



FIRST FLOOR POWER PLAN
SCALE: 1/8" = 1'

FOR GENERAL ELECTRIC NOTES SEE SHEET E-8
FOR ELECTRIC PANEL SCHEDULES SEE SHEET E-7

SPECIALTY NOTES

- 7 PROVIDE POWER AND NETWORK CONNECTION FOR OWNER PROVIDED COPIER/PRINTER; VERIFY EQUIPMENT WITH OWNER.
- 9 PROVIDE POWER AND NETWORK CONNECTION FLOOR BOXES FOR OWNER PROVIDED COMPUTERS AND POINT OF SALE EQUIPMENT; VERIFY EQUIPMENT WITH OWNER. VERIFY EXACT LOCATION WITH WADSWORTH DESIGN.
- 16 WALL MOUNTED TOOL BAR BY WADSWORTH DESIGN; 3 OUTLETS WITH DEDICATED CIRCUITS REQ

POWER LEGEND

- WALL MOUNTED FLUSH J-BOX
- DUPLEX CONVENIENCE OUTLET
- GFI GROUND FAULT INDICATOR (GFI) RECEPTICAL.
- WP EXTERIOR WALL MOUNTED WATER RESISTANT CONVENIENCE OUTLET. PROVIDE GROUND FAULT INDICATOR (GFI), TYPICAL.
- HALF SWITCHED CONVENIENCE OUTLET
- FOURPLEX CONVENIENCE OUTLET
- FLOOR MOUNTED DUPLEX CONVENIENCE OUTLET
- FLOOR MOUNTED FOURPLEX CONVENIENCE OUTLET
- FLUSH MOUNTED RECESSED JUNCTION BOX
- CEILING MOUNTED OUTLET
- DATA CONNECTION. VERIFY WITH AV CONSULTANT AND COMPUTER, PHONE PROVIDER.
- (2) CIRCUITS AT EACH STYLING STATION STUBBED THROUGH CONDUIT IN THE FLOOR. INSTALL FOURPLEX RECEPTACLE IN PRE-INSTALLED JUNCTION BOX IN STYLING STATION
- ELECTRIC PANEL

REVIEW FOR
STATE FIRE MARSHAL
AS PER REVIEW LETTER
BY ODDY RAISE
375133