

DAMMON ENGINEERING, INC.

CHIEF ENGINEER
EMMETT DAMMON, P.E.

CHIEF ARCHITECT
ROBERT WILTSE

1095 FLORIDA AVENUE
SLIDELL, LA. 70458
OFFICE: 985-649-5832
FAX: 985-641-5550

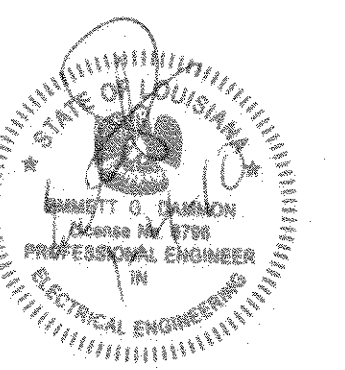
WEBSITE:
WWW.DAMMONENGINEERING.COM

EMAIL:
DAMMONENG@BELLSOUTH.NET

ARCHITECTURE
ENGINEERING
STUDIES
PLANNING
INVESTIGATION
EXPERT WITNESS

PAUL MITCHELL
SCHOOL
3321 HESSMER AVE
METAIRIE, LA
70002

FIRST FLOOR
LIGHTING
PLAN



REV:

SCALE: AS NOTED

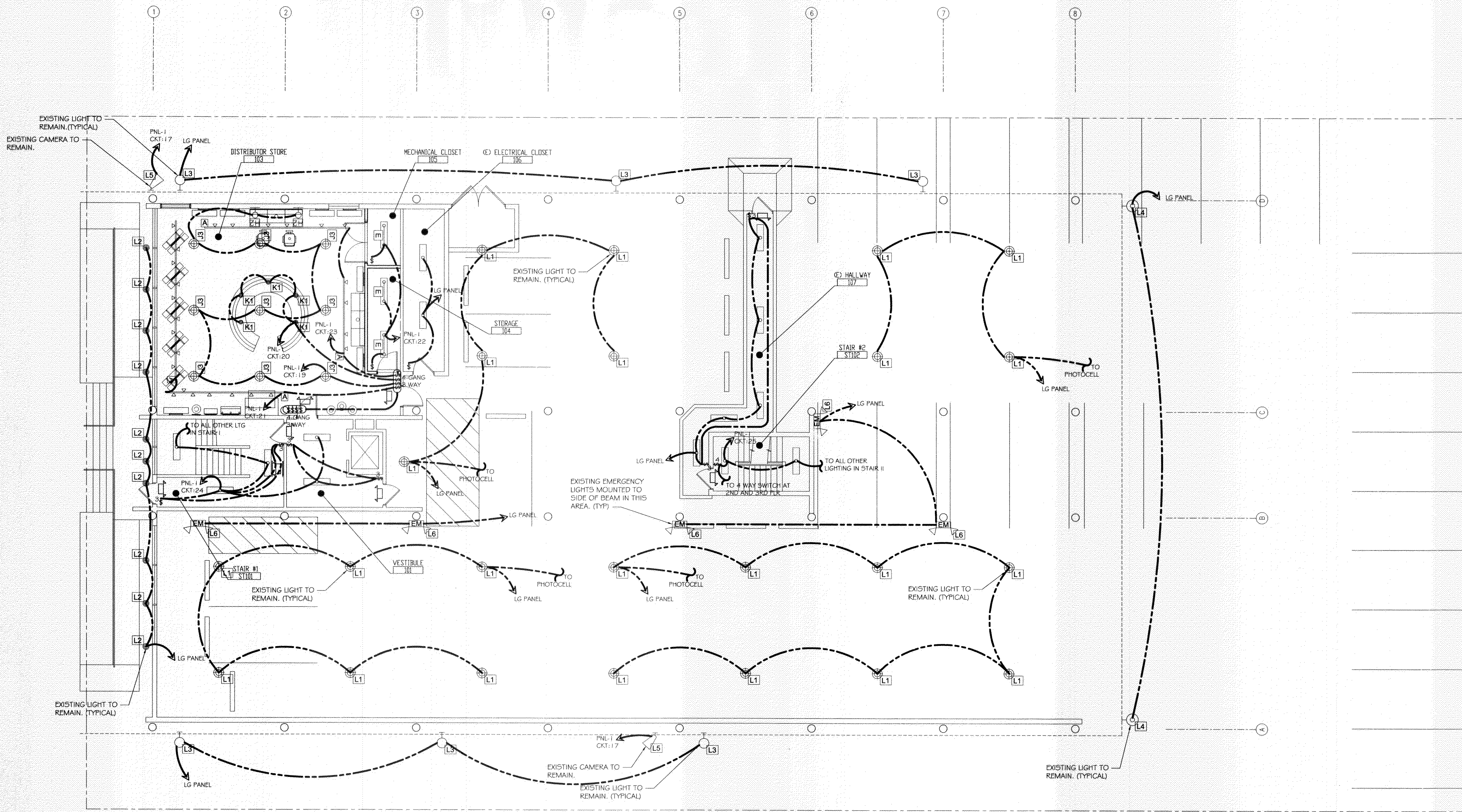
JOB#: 2051

DATE: 01-04-10

SHEET

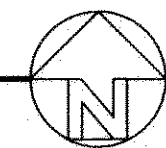
E-4

OF



FIRST FLOOR LIGHTING PLAN

SCALE: 1/8"=1'



FOR GENERAL ELECTRIC NOTES SEE SHEET E-8
FOR ELECTRIC PANEL SCHEDULES SEE SHEET E-7

LIGHTING LEGEND

SEE LIGHTING LEGEND ON E-8 FOR MORE DETAILED FIXTURE INFORMATION

- A TRACK LTG. METAL HALIDE
- A1 TRACK LTG. HALOGEN
- B 7" DOWNLIGHT COMPACT FLUORESCENT (30W)
- B1 7" DOWNLIGHT COMPACT FLUORESCENT (26W)
- C 3" ADJUSTABLE DOWNLIGHT
- D1 2x4 (2)LAMP FLOURESCENT
- D1F 2x4 (2)LAMP FLOURESCENT WITH FLANGE KIT
- DG 2x4 (3)LAMP FLOURESCENT

- DGF 2x4 (3)LAMP FLOURESCENT WITH FLANGE KIT
- E 1x4 SURFACE MOUNT FLOURESCENT
- G LINEAR FLOURESCENT PENDANT MTD. UPLIGHT
- H VAPOR - TITE INCANDESCENT WALL/ CLG FIXTURE
- H2 WALL MOUNT LINEAR FLOURESCENT
- J3 12" METAL HALIDE HIGH BAY LTG.
- K1 7.5" INCANDESCENT DECORATIVE PENDANT
- NEW EMERGENCY / EXIT FIXTURE WITH ARROWS AS INDICATED AND 90MIN. BATTERY BACKUP

- E1 EXISTING 2x4 FIXTURE TO BE RELOCATED AND REUSED
- E2 EXISTING 2x2 FIXTURE TO BE RELOCATED AND REUSED
- L1 EXISTING 100W BAY LIGHT TO BE REUSED
- L2 EXISTING DOWN LTG. TO BE REUSED
- L3 EXISTING WALL PACK TO BE REUSED
- L4 EXISTING NIGHT LIGHT WALL PACK TO BE REUSED
- L5 EXISTING SECURITY CAMERA TO BE REUSED
- EXISTING 1x4 SURFACE MTD. TO BE REUSED

REVISED PER STATE ELECTRICAL AS PER REVISED BY O.G. DAMMON

375133