

DAMMON ENGINEERING, INC.

CHIEF ENGINEER
EMMETT
DAMMON, P.E.

CHIEF ARCHITECT
ROBERT
WILTSE

1095 FLORIDA AVENUE
SLIDELL, LA. 70458
OFFICE: 985-649-5832
FAX: 985-641-5950

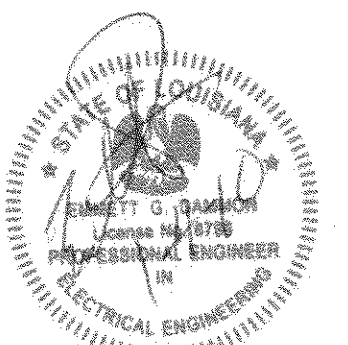
WEBSITE:
WWW.DAMMONENGINEERING.COM

EMAIL:
DAMMONENG@BELLSOUTH.NET

ARCHITECTURE
ENGINEERING
STUDIES
PLANNING
INVESTIGATION
EXPERT WITNESS

PAUL MITCHELL
SCHOOL
3321 HESSMER AVE.
METAIRIE, LA
70002

SECOND FLOOR LIGHTING PLAN



REV:

SCALE: AS NOTED

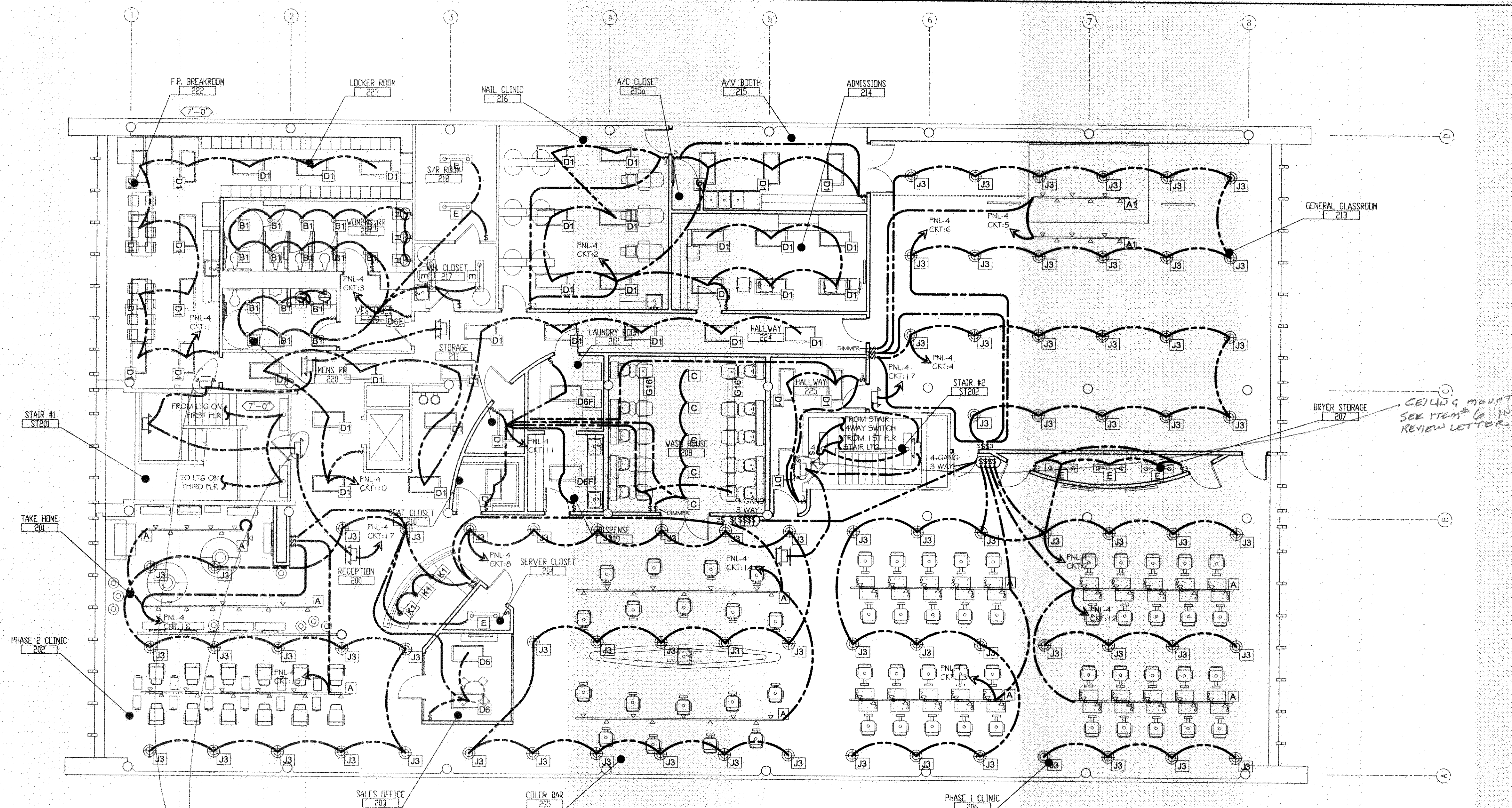
JOB#: 2051

DATE: 01-04-10

SHEET

E-5

OF



SECOND FLOOR LIGHTING PLAN

SCALE: 1/8"=1'



FOR GENERAL ELECTRIC NOTES SEE SHEET E-8
FOR ELECTRIC PANEL SCHEDULES SEE SHEET E-7

LIGHTING LEGEND

	A TRACK LTG. METAL HALIDE		D6F 2x4 (3) LAMP FLOURESCENT WITH FLANGE KIT
	A1 TRACK LTG. HALOGEN		E 1x4 SURFACE MOUNT FLOURESCENT
	B 7" DOWNLIGHT COMPACT FLOURESCENT (30W)		G LINEAR FLOURESCENT PENDANT MTD. UPLIGHT
	B1 7" DOWNLIGHT COMPACT FLOURESCENT (26W)		H VAPOR - TITE INCANDESCENT WALL/ CLG FIXTURE
	C 3" ADJUSTABLE DOWNLIGHT		H2 WALL MOUNT LINEAR FLOURESCENT
	D1 2x4 (2) LAMP FLOURESCENT		J3 12" METAL HALIDE HIGH BAY LTG.
	D1F 2x4 (2) LAMP FLOURESCENT WITH FLANGE KIT		K1 7.5" INCANDESCENT DECORATIVE PENDANT
	D6 2x4 (3) LAMP FLOURESCENT		NEW EMERGENCY / EXIT FIXTURE WITH ARROWS AS INDICATED AND 90MIN. BATTERY BACKUP

SEE LIGHTING LEGEND ON E-8 FOR MORE DETAILED FIXTURE INFORMATION

	E1 EXISTING 2x4 FIXTURE TO BE RELOCATED AND REUSED
	E2 EXISTING 2x2 FIXTURE TO BE RELOCATED AND REUSED
	L1 EXISTING 100W BAY LIGHT TO BE REUSED
	L2 EXISTING DOWN LTG. TO BE REUSED
	L3 EXISTING WALL PACK TO BE REUSED
	L4 EXISTING NIGHT LIGHT WALL PACK TO BE REUSED
	L5 EXISTING SECURITY CAMERA TO BE REUSED
	EXISTING 1x4 SURFACE MTD. TO BE REUSED

CEILING MOUNT
SEE ITEM # 6 IN
REVIEW LETTER

CEILING MOUNT
SEE ITEM # 6 IN
REVIEW LETTER

REVIEWED FOR
STATE FIRE MARSHAL
AS PER REVIEW LETTER
BY ODIS BRYAN
Odys Bryan
375133