

ARCHITECTS OF RECORD:

BRADFORD J. DUDLEY  
 345 THIRD STREET  
 LAGUNA BEACH, CALIFORNIA 92651  
 T: 949.376.3076 F: 949.376.3078

**PAUL MITCHELL**  
 PARTNER SCHOOL

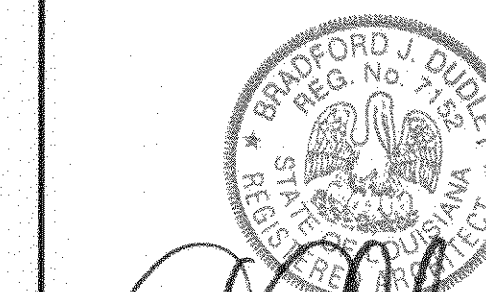
METAIRIE, LA

3321 HESSMER AVENUE  
 METAIRIE, LA 70002

CLIENT:

MARK AND LISA PALERMO

PROFESSIONAL SEAL:



SIGNATURE

12-24-2009  
 DATE

SUBMISSION	DATE
CONCEPT PLAN	12.01.09
CONSULTANT COORDINATION	12.14.09
PERMIT ISSUE SET	12.30.09

PROJECT NO: 0921

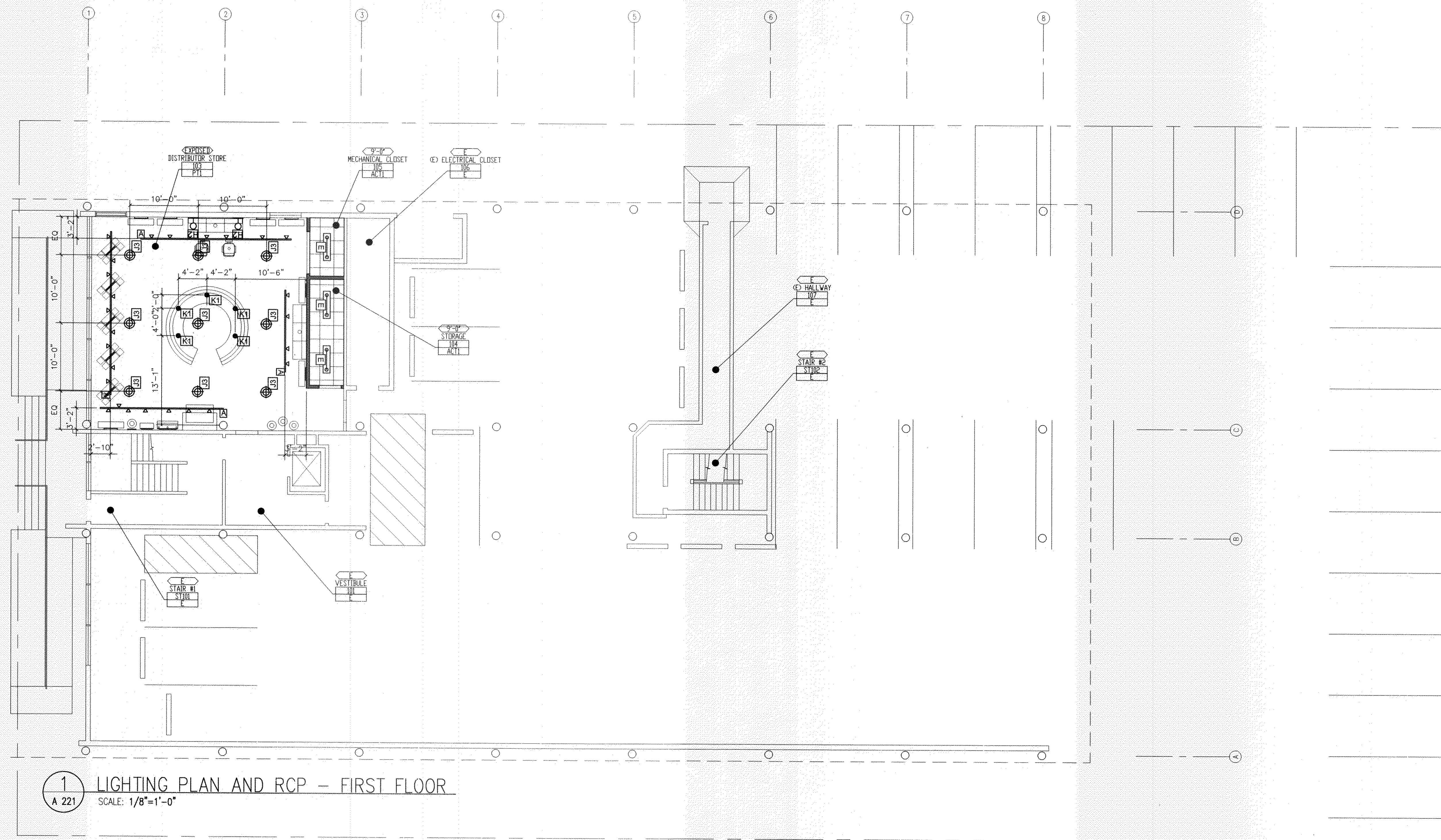
SCALE:

**FIRST FLOOR  
 REFLECTED  
 CEILING  
 PLAN**

A 221

PERMIT ISSUE SET: 12.30.09

REVIEWED FOR  
 STATE PROFESSIONAL  
 ARCHITECTURE BOARD  
 BY: [Signature]  
 375133



**1 LIGHTING PLAN AND RCP - FIRST FLOOR**  
 A 221 SCALE: 1/8"=1'-0"

GENERAL NOTES:

- GENERAL CONTRACTOR TO COORDINATE A PRE-CONSTRUCTION SITE WALK THROUGH MEETING TO FIELD VERIFY OUTLET AND FIXTURE LOCATIONS AND TYPES WITH ARCHITECT, OWNER AND ELECTRICAL SUBCONTRACTOR PRIOR TO COMMENCING ELECTRICAL WORK AND PURCHASE OF FIXTURES.
- VERIFY POWER REQUIREMENTS OF ALL APPLIANCES WITH SELECTED APPLIANCE MANUFACTURER.
- RECESSED LIGHTING FIXTURES RECESSED INTO INSULATED CEILINGS MUST BE APPROVED FOR ZERO CLEARANCE INSULATION COVER (IC) BY UNDERWRITER LABORATORIES OR OTHER TESTING/RATING LABORATORIES RECOGNIZED BY THE INTERNATIONAL CONFERENCE OF BUILDING OFFICIALS (ICBO).
- EXHAUST FAN TO BE CAPABLE OF PROVIDING 5 FULL VOLUME AIR CHANGES PER HOUR.
- WIRING DEVICES: SWITCHES AND CONVENIENCE OUTLETS SHALL BE "LEVITON" SPEC. GRADE. COLOR: WHITE, NOT IVORY. INSTALL AT HEIGHTS REQUIRED BY CURRENT CODE.
- EXTENT: COMPLETE WIRING INSTALLATION FOR POWER, LIGHTING, SIGNAL SYSTEM AND TELEPHONE. CODES: ALL WIRING AND MATERIAL SHALL BE IN FULL ACCORDANCE WITH NATIONAL, STATE AND LOCAL ELECTRICAL CODES INCLUDING TITLE 24.
- GENERAL CONTRACTOR TO PROVIDE SUBMITTAL PACKAGE FOR ARCHITECT TO REVIEW PRIOR TO ORDERING ANY LIGHT FIXTURES.

LIGHTING/REFLECTED CEILING PLAN LEGEND:

- CEILING MOUNTED PROJECTOR, VERIFY WITH OWNER
- EXIT SIGN - BACK MOUNTED
- EXIT SIGN - TOP, OR PENDANT MOUNTED DOUBLE FACE WITH DIRECTIONAL ARROWS AS INDICATED
- EXIT SIGN - TOP, OR PENDANT MOUNTED DOUBLE FACE WITH DIRECTIONAL ARROWS AS INDICATED
- EMERGENCY LIGHTING UNIT "Y" SEE ELEC. ENG. DRAWINGS
- SMOKE DETECTOR
- BULKHEAD TYPE, SEE SHEET A501
- FIXTURE TYPE, SEE SCHEDULE ON THIS SHEET FOR DETAILS
- HEIGHT ABOVE FINISHED FLOOR BELOW ANNOTATED CEILING
- ROOM NAME
- ROOM NUMBER
- CEILING FINISH, SEE FINISH SCHEDULE ON SHEET A 101
- CEILING GRID
- GYPSUM BOARD